

ZEROZERO
ROBOTICS
ZEROZERO ROBOTICS ZZ-F-1-001
Falcon Mini Drone Camera



ZEROZERO ROBOTICS ZZ-F-1-001 Falcon Mini Drone Camera User Guide

[Home](#) » [ZEROZERO ROBOTICS](#) » ZEROZERO ROBOTICS ZZ-F-1-001 Falcon Mini Drone Camera User Guide 

Contents

- 1 ZEROZERO ROBOTICS ZZ-F-1-001 Falcon Mini Drone Camera
- 2 Specifications
- 3 PRODUCT OVERVIEW
- 4 Download V-Copter App
- 5 Charging
- 6 Prepare the Controller
- 7 Prepare the Drone
- 8 Flight
- 9 Flight Safety
- 10 FCC Radiation Exposure Statement
- 11 Frequently Asked Questions
- 12 Documents / Resources
 - 12.1 References

ZEROZERO
ROBOTICS

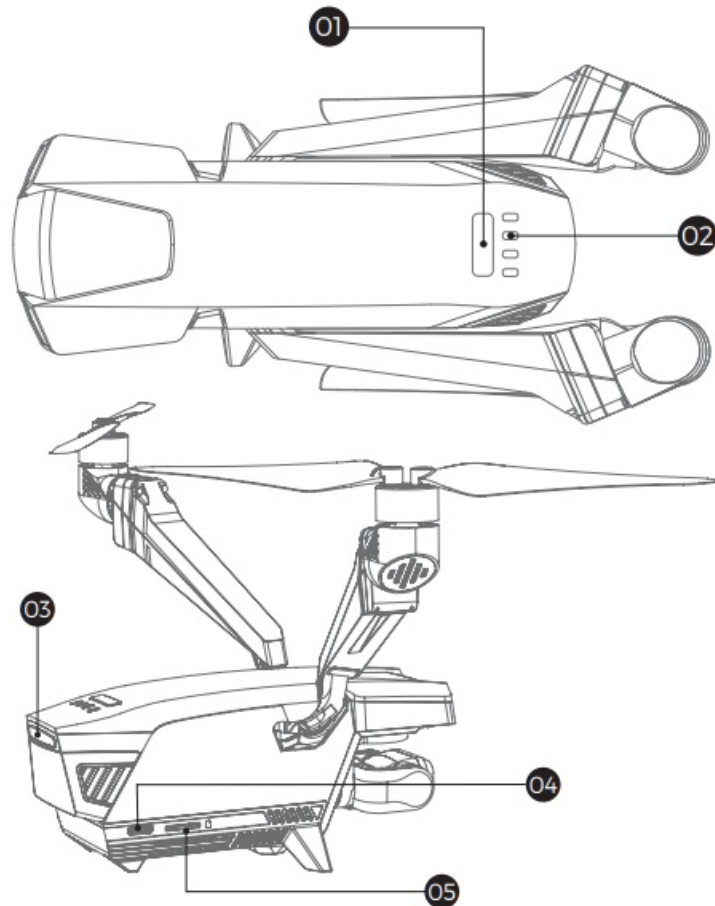
ZEROZERO ROBOTICS ZZ-F-1-001 Falcon Mini Drone Camera



Specifications

- Model: V202311
- Compatibility: iOS 12.0 (or above) or Android 9.0 (or above)
- Charging: USB-C port for aircraft and remote control
- App: V-Copter App

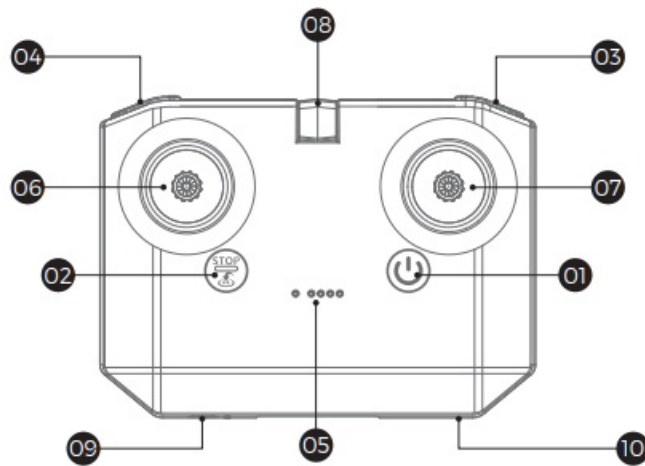
PRODUCT OVERVIEW



1. Power Button
 - Press once to check the current battery level
 - Press and hold to power the aircraft on or off
2. Battery Level LEDs

Displays the current battery level of the aircraft
3. Status LED

Indicates the status of the aircraft
4. USB-C Port USB-C
5. micro-SD SD
microSD Card Slot



1. Power Button

1. Press once to check the current battery level
2. Press and hold to power the remote controller on or off

2. Flight Pause/Return to Home (RTH) Button

- Press and hold 2 seconds to initiate RTH/Landing
- Press again to cancel RTH/Landing

3. camera

4. video

5. Displays the current battery level of the remote controller

6. Left control Sticks

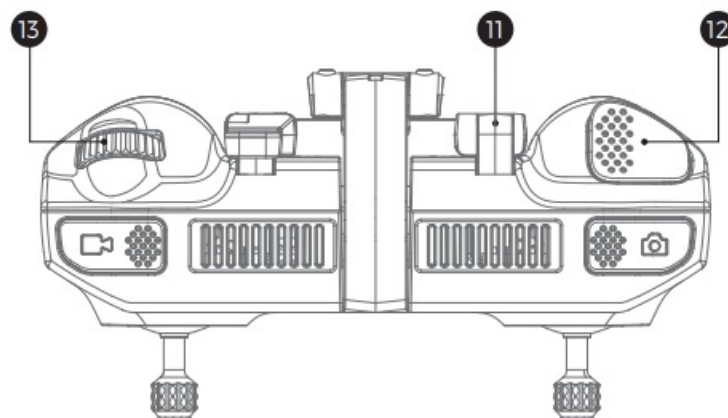
7. Right control Sticks

8. Mobile Device Holder

For mounting the mobile device securely on the remote controller

9. For charging

10. Connecting mobile device



11. Antennas

Unfold upwards during flighting

12. Press once to switch mode between Sport and Normal

Press and hold to enter remote control setting mode

13. Gimbal Dial

Download V-Copter App

Step 1

Use mobile phone to scan the QR code below or download the V-Copter App from the App Store / Google Play Store

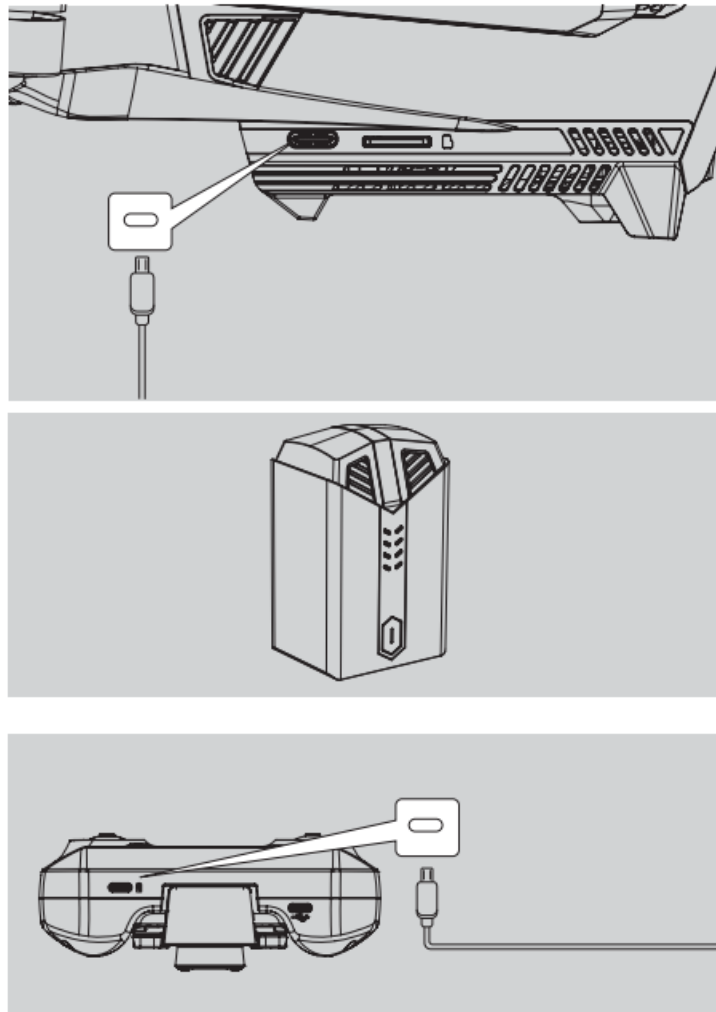
*The V-Coptr App is compatible with iOS 12.0 (or above) or Android 9.0 (or above)



Charging

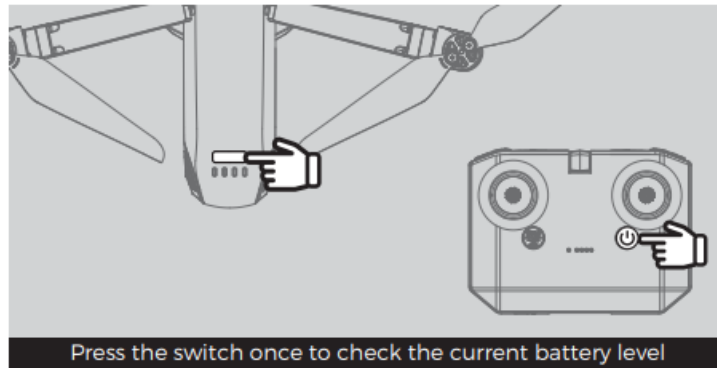
Step 2

- Please charge the aircraft battery and remote control before flying for the first time to ensure the flight experience



Connect the USB charger to the USB-C port on the aircraft/re-mote control to charge and activate the devices for the first time. Start charging indicator light flashing until the indicator light goes out.

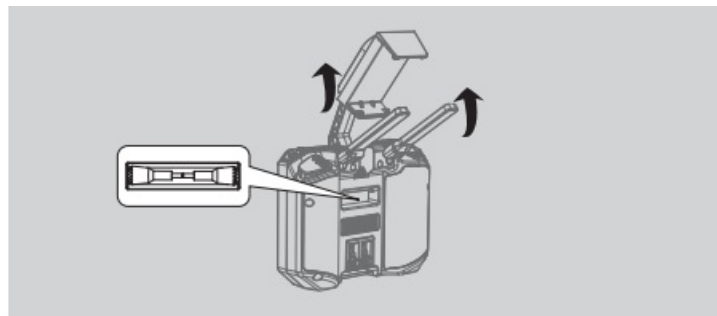
- Check the battery level



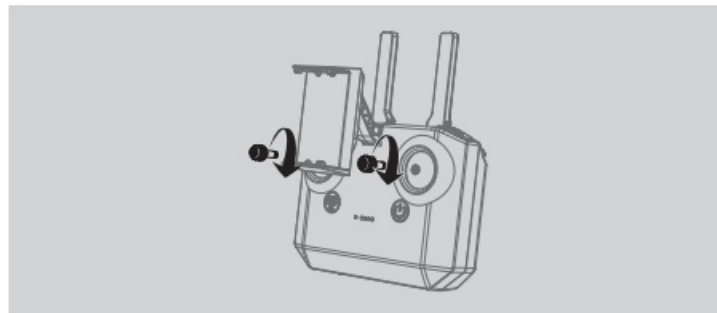
Prepare the Controller

Step 3

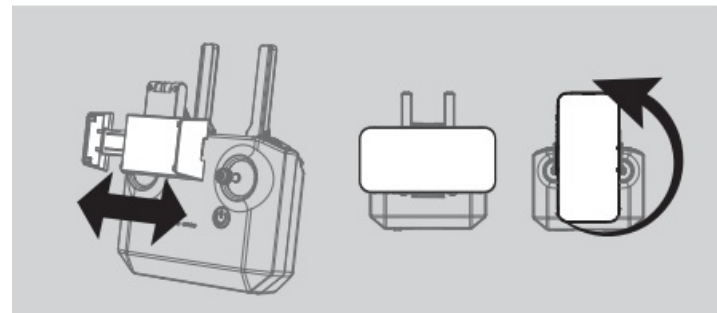
- Unfold the Mobile Phone Stand and the Antennas



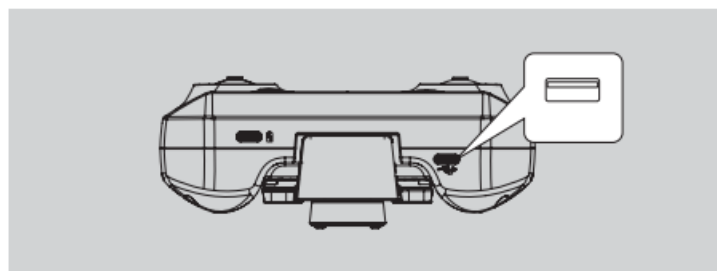
- Install the Control Sticks



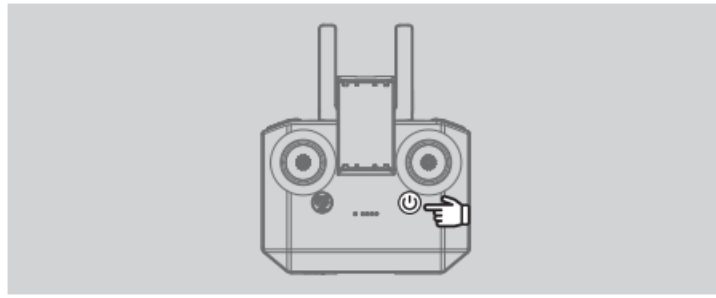
- Place your mobile phone on the Mobile Phone Stand



- Connect the phone using a cable according to the phone model



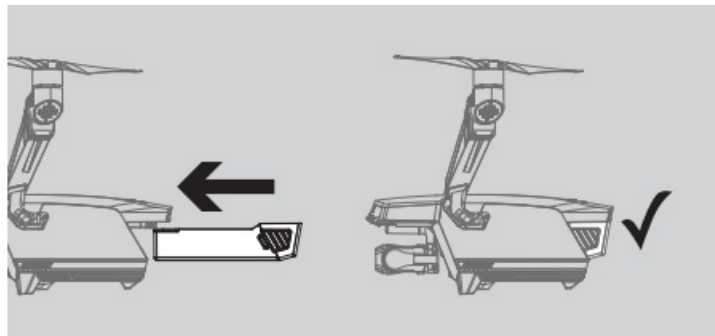
- Press and hold the power button for 2 seconds. The Controller will beep when it is successfully turned on



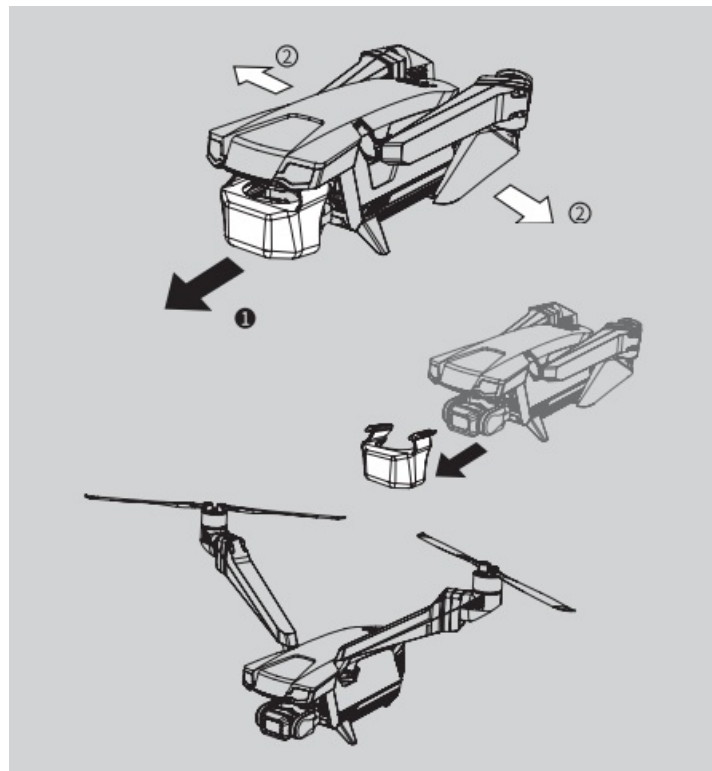
Prepare the Drone

Step 4

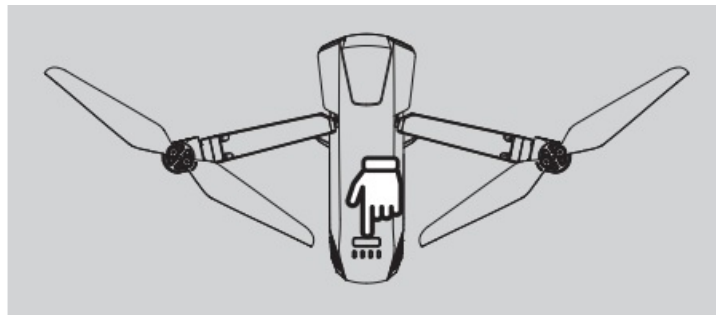
- Correctly install the battery following the direction illustrated below



- Remove the gimbal protector and extend the arms outward



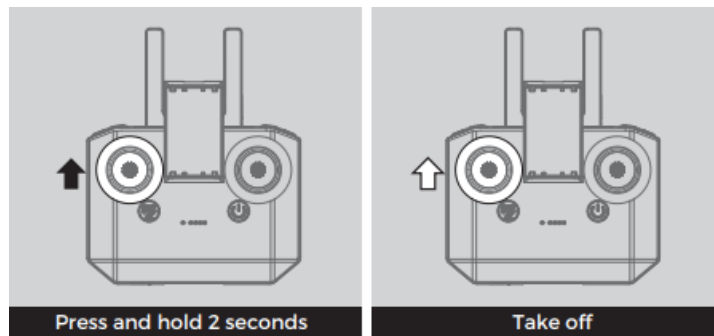
- Press and hold the power button for 2 seconds until the status indicator light blinks and wait for automatic pairing



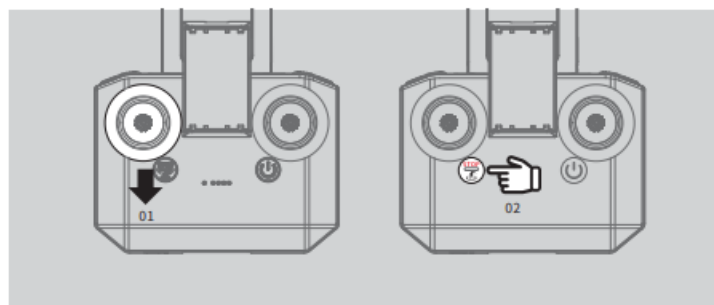
Flight

Step 5

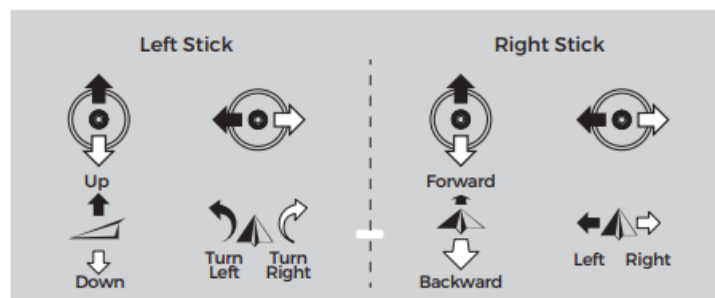
- Unlock
- Take off



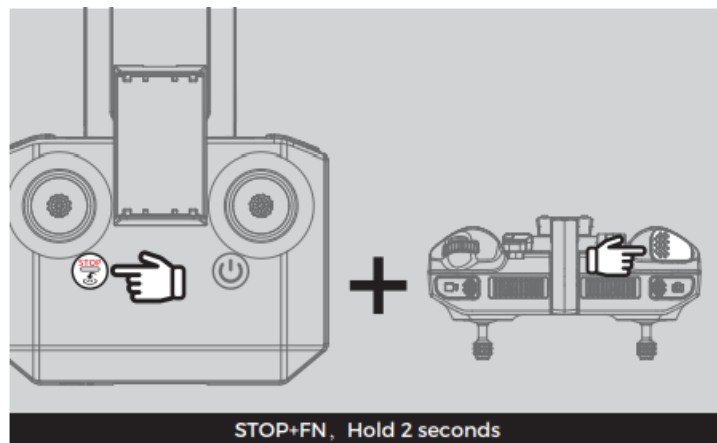
- Landing



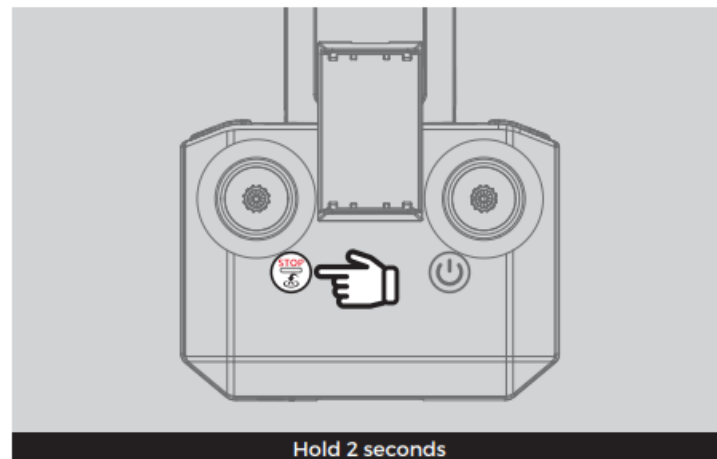
- Controller Operations



- Emergency Stop



- Return to Home









LEDs Descriptio

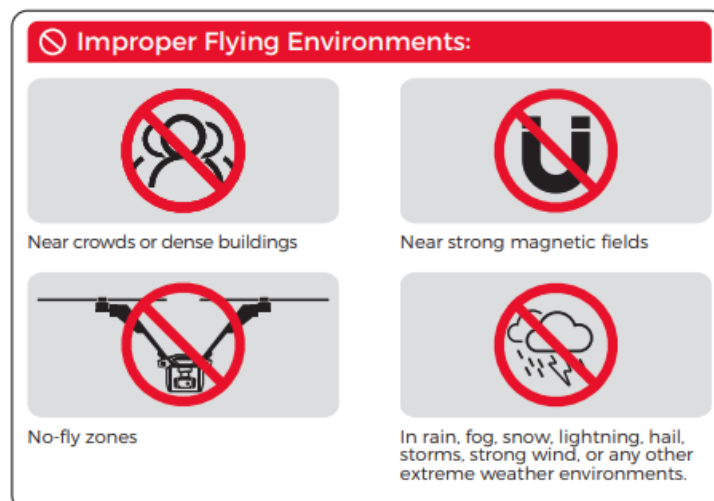
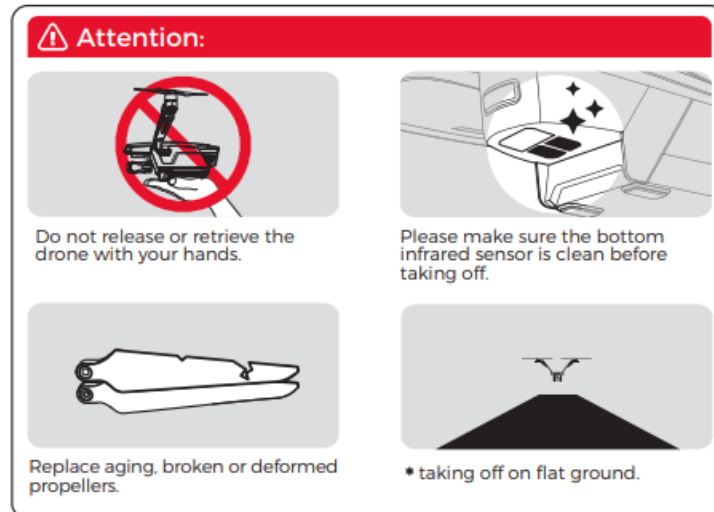
Status LED

Blinking Pattern		
	Alternately blinking red, green and yellow	System self-check
	Double blinking red	Remote control is not connected
	Double blinking blue	Wifi is not connected
	Double blinking green	Optical flow mode
	Blinking green	GPS mode
	Solid purple	ATTI mode
Warning		
	Blinking green continuously for 10 seconds	The returning point is recorded
	Double blinking yellow	Low battery in Optical flow mode
	Blinking yellow	Low battery in GPS
	Blinking purple	Low battery in ATTI
	Quickly blinking red	Serious low battery warning
	Solid white	Compass calibrate
	Quickly blinking white	IMU calibrate
	Blinking white continuously for 10 seconds	Server midpoint calibration
	Alternately blinking red and white	Calibration Failed
	Alternately blinking red and yellow	Need to calibrate the interfered compass
	Solid red	Equipment trouble
	Blinking red	Not horizontally placed, unable to take off
	Alternately blinking red and green	Upgrade in progress

BLASTOFF CONTROLLER

Blastoff Controller Level LEDs		
	Double blinking red	
	Blinking red	
	Solid green	
	Solid red	
	Solid white	
	Solid yellow	

Flight Safety



Please check the Disclaimer and Safety Instructions for more details at zerozero.tech/support/downloads. Please read it carefully before flying.

FCC Radiation Exposure Statement

FALCON Mini complies with FCC radiation exposure limits set forth for an uncontrolled environment. This equipment should be installed and operated with minimum distance 20cm between the radiator & your body. BLASTOFF CONTROLLER meets the government's requirements for exposure to radio waves. The guidelines are based on standards that were developed by independent scientific organizations through periodic and thorough evaluation of scientific studies. The standards include a substantial safety margin designed to assure the safety of all persons regardless of age or health. The SAR limit of USA (FCC) is 1.6 W/kg averaged. Device types: BLASTOFF CONTROLLER (FCC ID: 2AIDW-ZZ-F-2-001) has also been tested against this SAR limit. SAR information can be viewed on-line at <http://www.fcc.gov/oet/ea/fccid/>. Please use the device FCC ID number for search. This device was tested simulation typical 0mm to body. To maintain compliance with FCC RF exposure requirements, use accessories should maintain a separation distance between the user's bodies mentioned above, the use of holsters and similar accessories should not contain metallic components in its assembly, the use

of accessories that do not satisfy these requirements may not comply with FCC RF exposure requirements, and should be avoided.

FCC Warning

This device complies with Part 15 of the FCC Rules. Operation is subject to the following two conditions:

1. This device may not cause harmful interference, and
2. this device must accept any interference received, including interference that may cause undesired operation.

Note: This equipment has been tested and found to comply with the limits for a Class B digital device, pursuant to part 15 of the FCC Rules. These limits are designed to provide reasonable protection against harmful interference in a residential installation. This equipment generates, uses and can radiate radio frequency energy and, if not installed and used in accordance with the instructions, may cause harmful interference to radio communications. However, there is no guarantee that interference will not occur in a particular installation. If this equipment does cause harmful interference to radio or television reception, which can be determined by turning the equipment off and on, the user is encouraged to try to correct the interference by one or more of the following measures:

- Reorient or relocate the receiving antenna.
- Increase the separation between the equipment and receiver.
- Connect the equipment into an outlet on a circuit different from that to which the receiver is connected.
- Consult the dealer or an experienced radio/TV technician for help.

NOTE 2: Any changes or modifications to this unit not expressly approved by the party responsible for compliance could void the user's authority to operate the equipment.

Frequently Asked Questions

Q: What are the FCC Regulations regarding this product?

A: This equipment complies with part 15 of the FCC Rules. Operation is subject to specific conditions related to interference.

Q: How do I check the battery levels of the aircraft and remote controller?

A: For the aircraft, press the Power Button once. For the remote controller, refer to the Battery Level LEDs display.

Q: How do I switch between Sport and Normal modes?

A: Press once on the designated button to switch modes.

Q: What does the Status LED indicate?

A: The Status LED provides information about the status of the aircraft.

Documents / Resources

	ZEROZERO ROBOTICS ZZ-F-1-001 Falcon Mini Drone Camera [pdf] User Guide ZZ-F-1-001, ZZ-F-1-001 Falcon Mini Drone Camera, Falcon Mini Drone Camera, Mini Drone Camera, Drone Camera, Camera
---	--

References

- [User Manual](#)

[Manuals+](#), [Privacy Policy](#)

This website is an independent publication and is neither affiliated with nor endorsed by any of the trademark owners. The "Bluetooth®" word mark and logos are registered trademarks owned by Bluetooth SIG, Inc. The "Wi-Fi®" word mark and logos are registered trademarks owned by the Wi-Fi Alliance. Any use of these marks on this website does not imply any affiliation with or endorsement.