


**2BLFQRC
RC Remote
Controller**



ZERO BREEZE 2BLFQRC RC Remote Controller Instruction Manual

[Home](#) » [ZERO BREEZE](#) » ZERO BREEZE 2BLFQRC RC Remote Controller Instruction Manual 

Contents

- [1 ZERO BREEZE 2BLFQRC RC Remote Controller](#)
- [2 Overview](#)
- [3 In The Box](#)
- [4 Tech Specs](#)
- [5 Disconnecting Instructions](#)
- [6 Accessory Connection](#)
- [7 Drainage Pipe Operation and Installation](#)
- [8 Usage Precautions](#)
- [9 Documents / Resources](#)
 - [9.1 References](#)



ZERO BREEZE 2BLFQRC RC Remote Controller



Overview

The Mark 3 is ZERO BREEZE's latest portable air conditioner, boasting a cooling capacity of 5,280 BTU. Weighing just under 22 pounds, it features a multi-function climate control system that allows you to set and maintain temperatures between 61°F and 88°F, suitable for spaces ranging from 100 to 150 square feet. Whether camping or living on the move in a van, trailer, or tiny house, the Mark 3 offers unmatched convenience for all your climate control needs.

Highlights

- **Portability:** Only 22 lbs, the smallest, lightest 5,280 BTU portable AC, offering comfort on-the-go.
- **Rapid Cooling:** Cools 20°F in 5 minutes, providing quick relief from the heat.
- **Thermostat Setting:** Set the Temperature Between 61°F and 88°F.
- **Battery-Powered:** No need for power outlets; Mark 3 runs on batteries.
- **Solar-Powered:** Mark 3 is the first 500W solar-powered portable AC.
- **No Installation:** Set up in 5 minutes without drilling or cords.
- **Ultra-Low Power:** Consumes a minimum of 150W, saving energy and costs.
- **Dual-Function:** Heats and cools for year-round comfort.
- **Dehumidify:** Effectively reduces humidity, creating a more comfortable environment.
- **Active Drain System:** Say goodbye to condensation hassles.

In The Box

Mark 3 Air Conditioner Package:

- ZERO BREEZE Mark 3 Air Conditioner x 1
- 50V DC Power Adapter for Wall Outlet x 1
- 2.4G Wireless Remote Controller x 1
- Drainage Pipe x 1
- Front Outlet Duct x1
 - $\Phi 4.33''$ (11 cm)
- Front Inlet Duct / Rear Inlet Duct x1
 - $\Phi 5.12''$ (13 cm)
- Rear Outlet Duct x 1
 - $\Phi 5.91''$ (15 cm)
- Front Inlet Adapter x 1
- Front Outlet Adapter x 1
- Rear Inlet Adapter x 1
- Rear Outlet Adapter x 1
- ZERO BREEZE Mark 3 User Manual x 1

Mark 3 Battery Package:

- Mark 3 Battery × 1
- Mark 3 User Manual × 1

Tech Specs**Mark 3 Air Conditioner Specification**

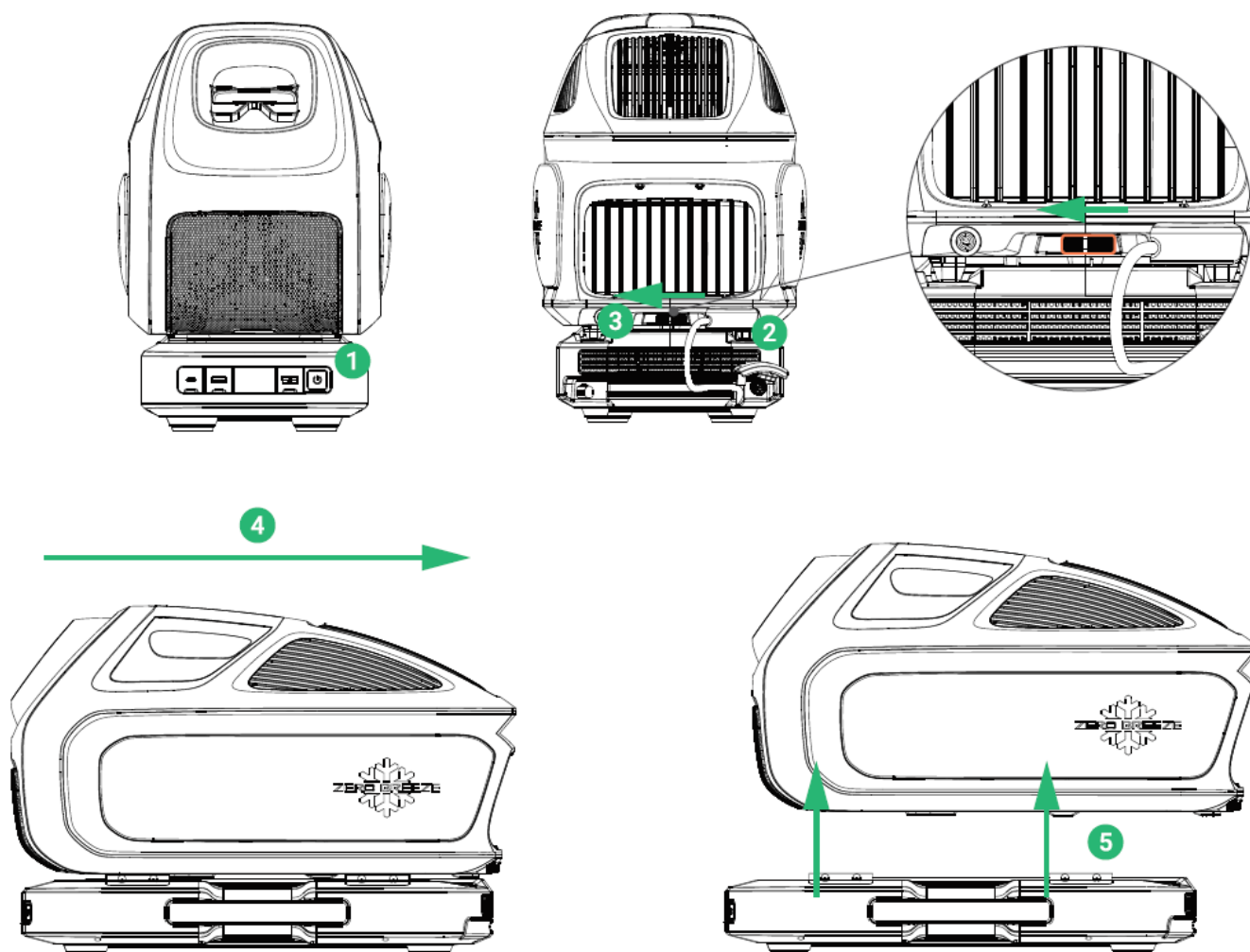
Cooling Capacity	1550W/ 5280BTU
Heating Capacity	1700W/ 5800BTU
Working Mode	Rocket/Cool/Sleep/Fan/Dry/Care/Heating
Cooling Rated Input	500W
Wind Speed Level	4
Rated Working Voltage	48V DC
Working Voltage Range	38V-58.5V
Thermostat Setting	Cooling: 61°F-82°F/16°C – 28°C Heating: 64°F-88°F/18°C – 31°C Dehumidifying: 15% – 90% relative humidity
AC Adapter Input	100V-240V (50Hz/ 60Hz)
Ambient Temperature for Operation	50°F-104°F/10°C-40°C
Ambient Temperature for Storage	14°F-140°F/-10°C-60°C
Refrigerant	R290
Unit Size	22"L x 10"W x 12"H / 56cm x 26cm x 31cm
Weight	22lbs/10kg
Moisture Protection	IPX4
Ventilation Configuration	Dual Hose

Mark 3 Battery Specification

View Mark 3 Battery

Battery Type	21700 Lithium-Ion Polymer Battery
Net Weight	14lbs/6.4kg
Unit Size	20"L x 8"W x 4"H / 51cm x 21cm x 11cm
Capacity	1022Wh
DC Charge Input Voltage	12V-60V
Charge from 0% to 80%	About 2 hours (by official power adapter)
Safety	Short protection Over current protection Low voltage protection Over temperature protection
Chainable	Support 2, 3, 4, or more batteries chaining one after another
Operating Temperature	14°F-104°F/-10°C-40°C
Output Power Max	550W
Output Voltage	42V-58.8V
12V Anderson Output	12V/10A Max(120W)
USB Type C	PD(100W Max)
USB Type A	QC 3.0 18W
Charging Method	Power adapter from the wall outlet Solar Panels Cigarette Port
Charging Limited Current	10A
Charging while discharging	Yes

Disconnecting Instructions

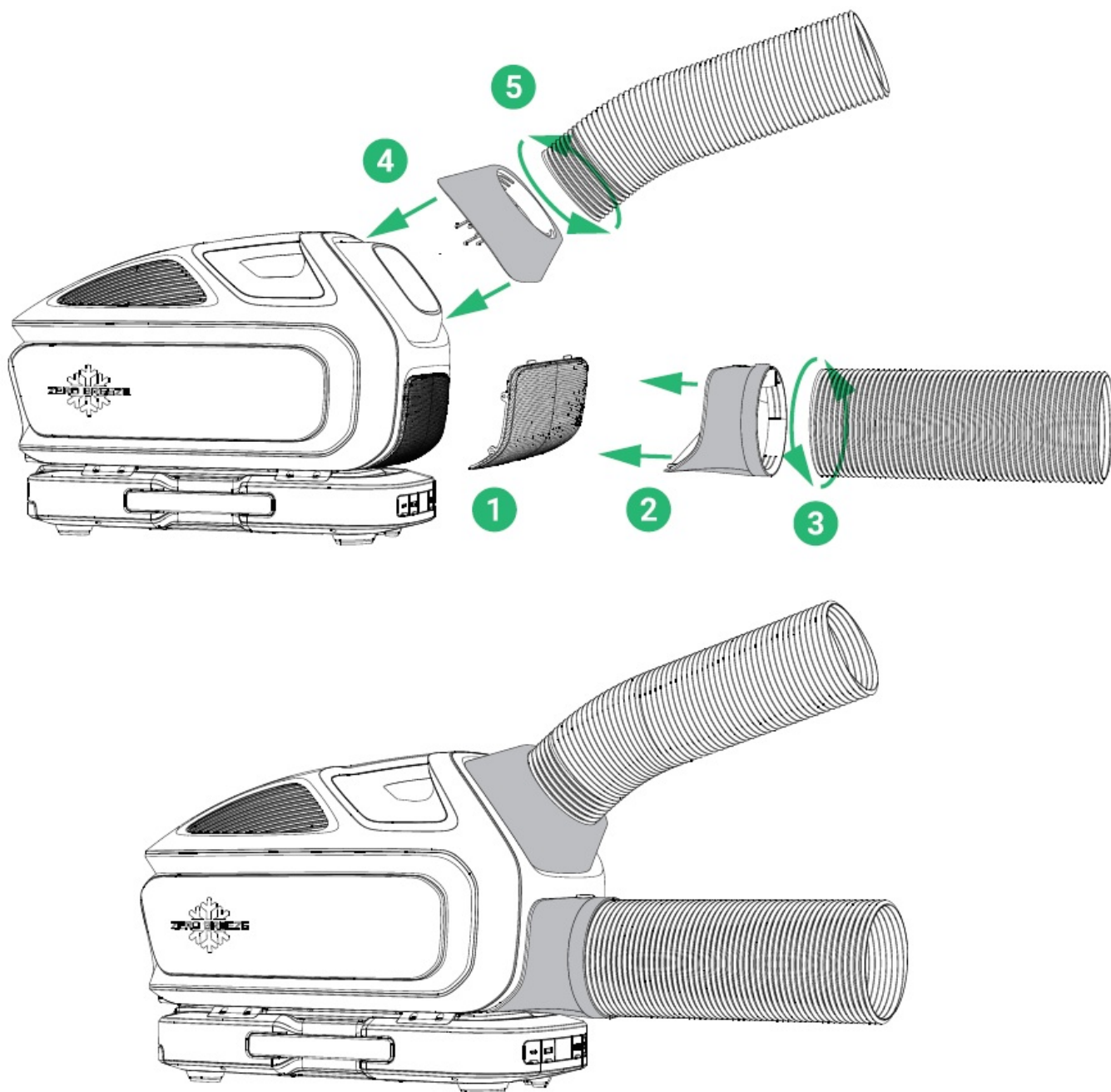


1. Turn off the Mark 3 and battery.
2. Disconnect the power cord from the Mark 3.
3. Press the buckle on the back of the Mark 3.
4. While pressing the buckle, pull the Mark 3 back.
5. Remove the Mark 3 from the battery.

Accessory Connection

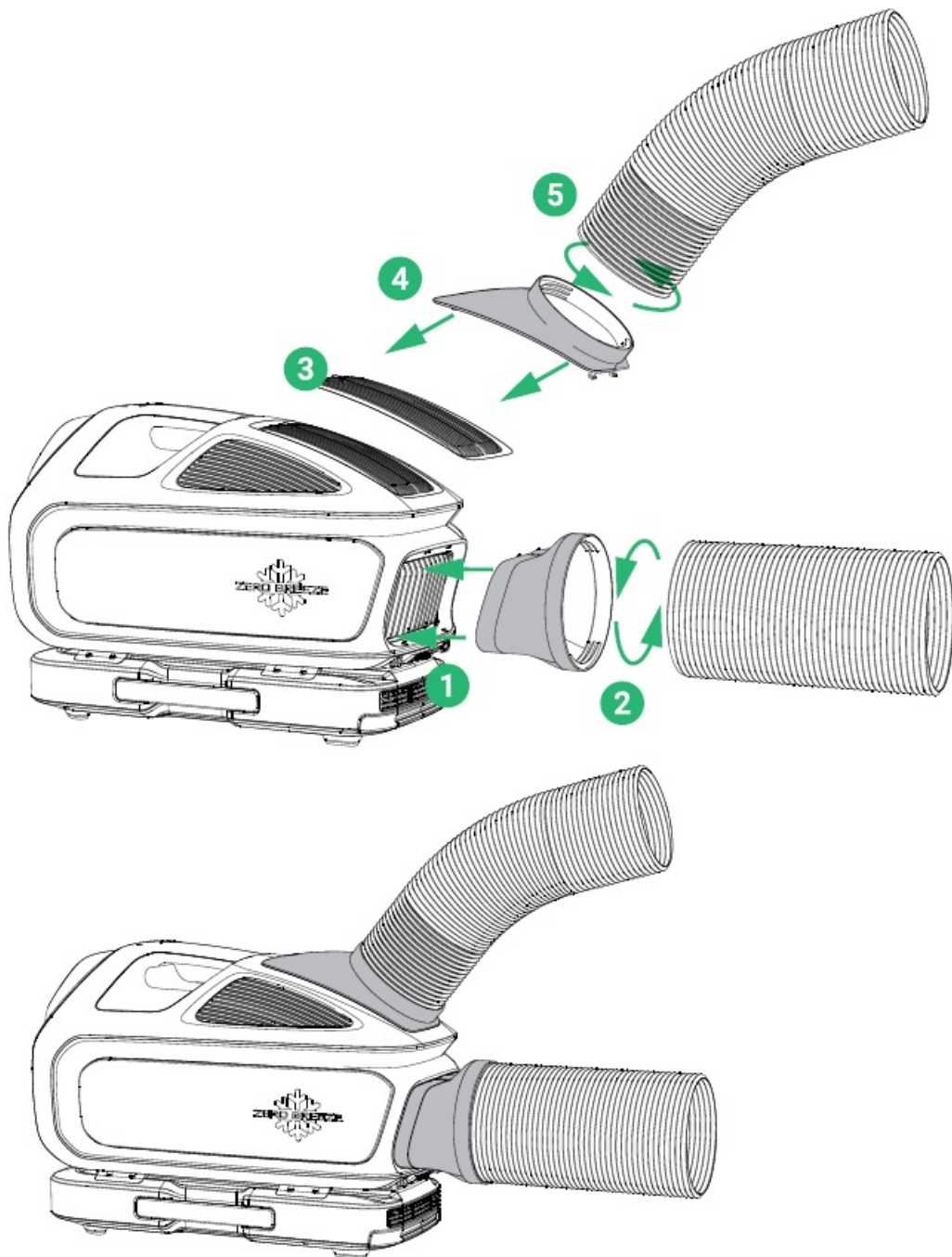
Front Inlet and Front Outlet Installation

This configuration allows you to place the Mark 3 directly outside the area you are trying to cool and aim both ducts into the space to conserve room.



1. Remove the mesh filter.
2. Attach the front inlet adapter to the intake vent of the Mark 3.
3. Screw the front inlet duct to the adapter.
4. Attach the front outlet adapter by inserting it into the front blades of the Mark 3.
5. Screw the front outlet duct to the adapter.

Rear Inlet and Rear Outlet Installation



1. Attach the rear outlet adapter to the rear outlet vent of the Mark 3.
2. Screw in the rear outlet duct into the adapter.
3. Remove the vent cover.
4. Insert the rear inlet adapter into the rear inlet of the Mark 3.
5. Screw in the rear inlet duct into the adapter.

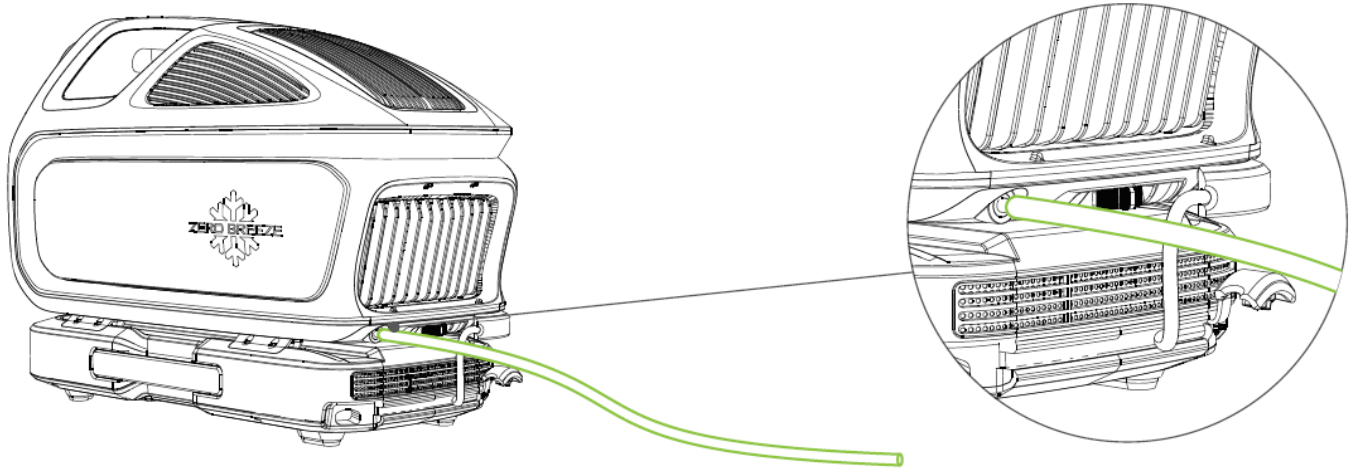
Note:

- When using the Mark 3 in a large space or outdoor open space, the Mark 3 functions as a spot cooler.
- When using it in a confined space and wanting to cool down the area, there are two ways to place the A/C and ducts:
 1. Place the A/C inside while venting the rear inlet and outlet ducts out of the space.
 2. Place the A/C outside while directing the front inlet and outlet ducts into the space.

- Front inlet and rear inlet use the same duct.
- Be sure to store both accessories safely. Reattach them when the front ducts are no longer needed.

Drainage Pipe Operation and Installation

Connect the drainage pipe to the drainage outlet to expel condensate from the Mark 3.



Note:

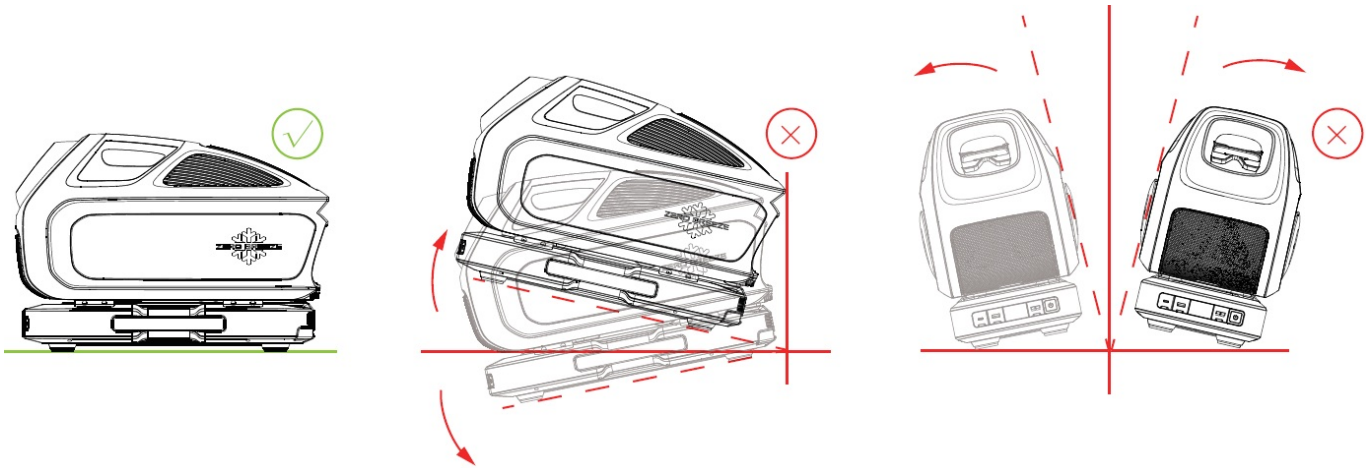
- The outlet of the drainage pipe can be positioned up to 1 meter above the unit.
- Keep distance from the power supply.
- Ensure the hose is fastened properly and facing downwards to allow the water to flow smoothly.

Usage Precautions

- The Mark 3 should be kept leveled at all times during use.
- Do not tilt the unit forward, backward or sideways when it is in use or being carried, otherwise, water may leak from the front and sides.
- Do not move the Mark 3 immediately after using. The Mark 3 will auto-drain the water for seconds after turning off.
- Even though, new water may generated after turning off for several minutes. Please move it carefully.

Note: If there is leakage due to improper placement, do not be nervous. Simply wipe it up or allow it to cool naturally. It will not affect the performance of the machine.

Warning



Documents / Resources

	<p>ZERO BREEZE 2BLFQRC RC Remote Controller [pdf] Instruction Manual 2BLFQRC, 2BLFQRC RC Remote Controller, RC Remote Controller, Remote Controller, Controller</p>
	<p>ZERO BREEZE 2BLFQRC RC Remote Controller [pdf] User Manual 2BLFQRC, 2BLFQRC RC Remote Controller, RC Remote Controller, Remote Controller, Controller</p>

References

- [User Manual](#)

[Manuals±](#), [Privacy Policy](#)

This website is an independent publication and is neither affiliated with nor endorsed by any of the trademark owners. The "Bluetooth®" word mark and logos are registered trademarks owned by Bluetooth SIG, Inc. The "Wi-Fi®" word mark and logos are registered trademarks owned by the Wi-Fi Alliance. Any use of these marks on this website does not imply any affiliation with or endorsement.