



## zero 88 Gateway 8 Workshop User Manual

[Home](#) » [zero 88](#) » zero 88 Gateway 8 Workshop User Manual 

### Contents

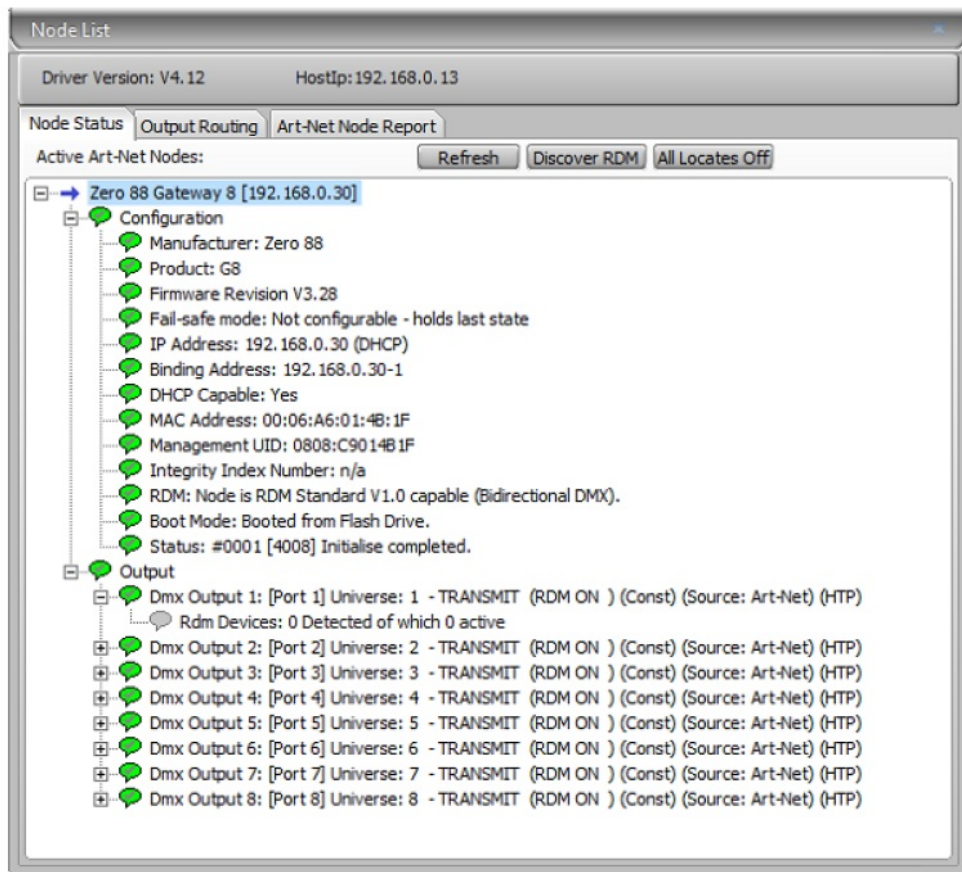
- [1 zero 88 Gateway 8 Workshop](#)
- [2 IP Address Configuration](#)
- [3 Documents / Resources](#)
  - [3.1 References](#)



### zero 88 Gateway 8 Workshop



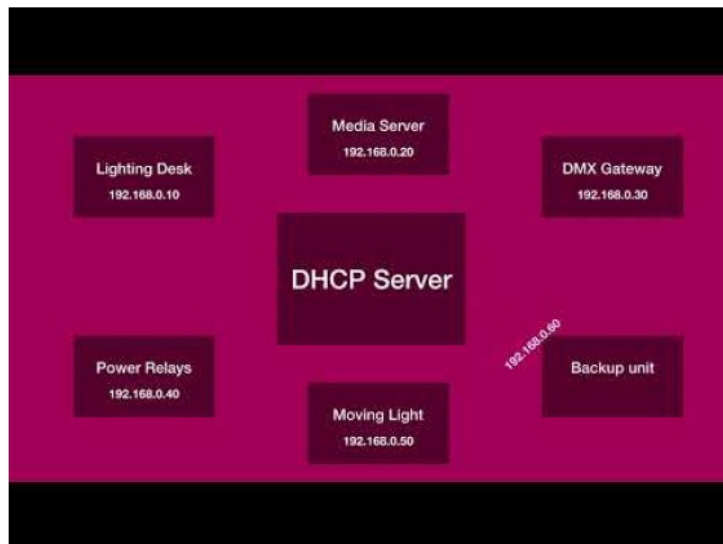
DMX-Workshop™ is a fully featured network management, analysis, configuration and diagnostics tool for lighting networks. You can download the free software from the Artistic-Licence website. When Gateway 8 is connected to a computer running DMX-Workshop, it should be detected and displayed as an Art-Net node (click the 'Node List' tab to verify this). The node can be expanded to show the configuration and DMX output information.



**Right-clicking on any entry brings up a menu that offers various functionality:**

- The 'Configure Node' option enables configuration of the universe number (port address), protocol (Art-Net or sACN), sACN priority, product name and port labels.
- 'Copy to clipboard' enables all the node information to be pasted into a support request email.
- 'Merge Controls' (selectable only on individual DMX outputs) enables the choice of LTP (latest takes preference) or HTP (highest takes preference) merge modes.
- 'Indicators' enables selection of normal, identify or mute for the LED indicators. Normal is the default behaviour, identify causes the power LED to flash, and mute turns off all the LEDs. 'RDM Devices' offers options for device discovery and configuration.
- 'Advanced' leads to 'Programme Upload' and 'Configure IP Address and DHCP' as described opposite.

## IP Address Configuration




<https://youtu.be/bfCINejidFs>

Choosing the 'Configure IP Address' in the 'Advanced' menu brings up a window that shows the IP and Subnet Mask. The IP uniquely identifies any nodes or controllers on a network, while the Subnet Mask defines which part of the IP represents the network address and which part represents the host address. For example, a Subnet Mask of 255.0.0.0 means that the first byte of the IP defines the network address and the remaining 3 bytes define the host address.

By default, the product has a static IP address in the range 2.x.x.x. There are situations in which the user may wish to change this – for example, a 192.168.x.x address is generally used in office environments. A useful additional feature is the ability to enable automatic IP address allocation on networks controlled by a DHCP server (check the 'Enable DHCP' box to activate).

---

## Documents / Resources

	<a href="#">zero 88 Gateway 8 Workshop [pdf] User Manual</a> Gateway 8 Workshop, Gateway 8, Workshop
---	---

## References

- [User Manual](#)