



Zero 88 FLX S48 Faders Window Instruction Manual

[Home](#) » [zero 88](#) » Zero 88 FLX S48 Faders Window Instruction Manual 

Contents

- [1 Zero 88 FLX S48 Faders Window](#)
- [2 Product Usage Instructions](#)
- [3 Frequently Asked Questions](#)
- [4 Using Instructions](#)
- [5 Documents / Resources](#)
 - [5.1 References](#)
- [6 Related Posts](#)



Zero 88 FLX S48 Faders Window



Product Usage Instructions

Faders Window

- The Faders window is available on consoles with an external monitor connected.
- It can be viewed on the bottom half of the Faders desktop.

FLX Consoles

- On FLX consoles, you will find the top four buttons running across the top of the Faders window.
- These buttons display the current functionality of the User Defined Keys (UDKs).

Solution Consoles

- On Solution consoles, you can access the Faders window by clicking the Submasters button.
- This will open the Faders window and display the current functionality of the playback faders.

Specifications

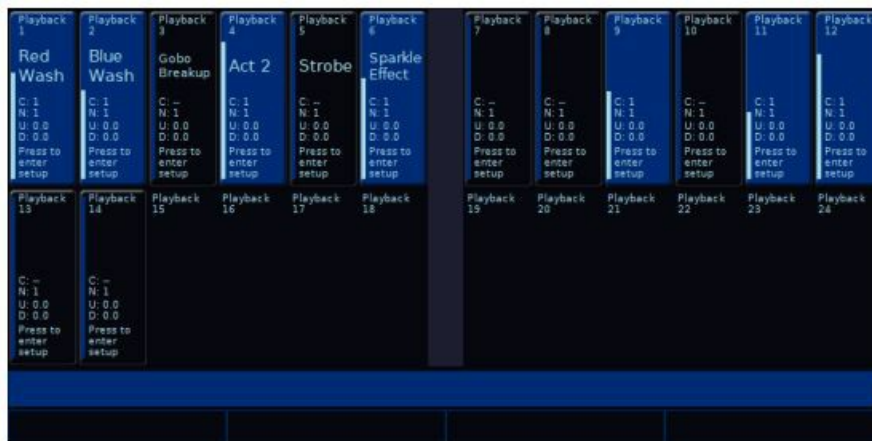
- **Manufacturer:** Zero 88
- **Model:** ZerOS

Frequently Asked Questions

- **Q:** What consoles are compatible with the Faders window?
 - **A:** The Faders window is available on consoles with an external monitor connected.
- **Q:** What do the top four buttons in the FLX console's Faders window indicate?
 - **A:** The top four buttons in the FLX console's Faders window show the current functionality of the User Defined Keys (UDKs).
- **Q:** How can I access the Faders window on Solution consoles?
 - **A:** On Solution consoles, you can open the Faders window by clicking the Submasters button.

Using Instructions

Faders Window

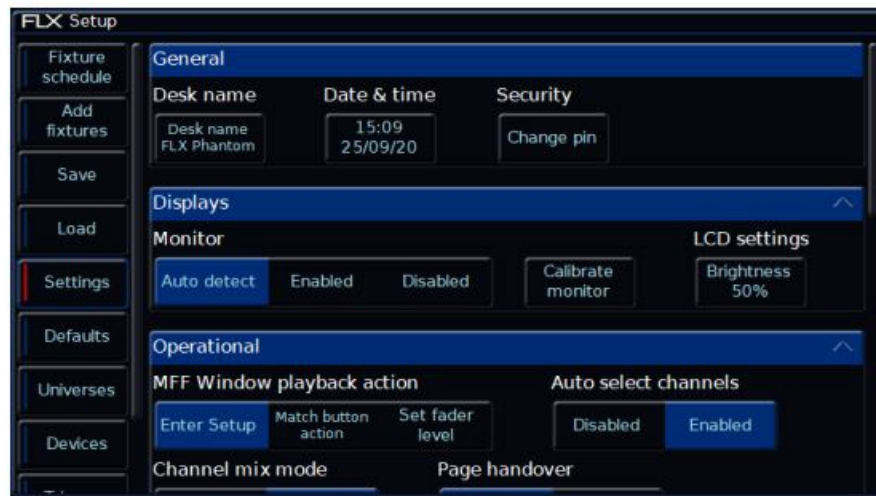


- The Faders window will show you exactly what your 24 multi-functional faders (or 48 on FLX S48) are currently doing.
- When in Channels, the on-screen faders will therefore show you the name of the fixture each fader is controlling, and their intensity percentage.
- When in playbacks, the on-screen faders will display the playback name, the current cue (C), the next cue (N), the raise time (U), and the lower time (D) of that playback.
- For consoles without an external monitor, tapping View will toggle between the Faders and Cues window on the

internal touchscreen.



- For consoles with an external monitor connected, the Faders window can be viewed on the bottom half of the Faders desktop.




- By default, clicking on a playback fader in the faders window, will open that playback's settings.
- Rather than pressing on an on-screen playback and opening that playback's settings, you can instead configure pressing an on-screen fader to match that playback's button function, or use the on-screen fader to change the fader level by dragging. This is particularly useful if you are viewing the faders desktop via the ZerOS Monitor app on a tablet.
- This can be configured from Setup -> Settings , and using the MFF Window playback action option under Operational.



- On FLX, the top four buttons running across the top of the Faders window, show what your UDKs are currently doing.

On Solution consoles, click the Submasters button to open the Faders window. This will show you the current functionality of the playback faders.

Documents / Resources

	<p>Zero 88 FLX S48 Faders Window [pdf] Instruction Manual FLX S48 Faders Window, FLX S48, Faders Window, Window</p>
---	---

References

- [User Manual](#)

[Manuals+](#), [Privacy Policy](#)

This website is an independent publication and is neither affiliated with nor endorsed by any of the trademark owners. The "Bluetooth®" word mark and logos are registered trademarks owned by Bluetooth SIG, Inc. The "Wi-Fi®" word mark and logos are registered trademarks owned by the Wi-Fi Alliance. Any use of these marks on this website does not imply any affiliation with or endorsement.