



# zero 88 Art-Net Devices DMX ArtNet Lighting Console User Manual

[Home](#) » [zero 88](#) » zero 88 Art-Net Devices DMX ArtNet Lighting Console User Manual 

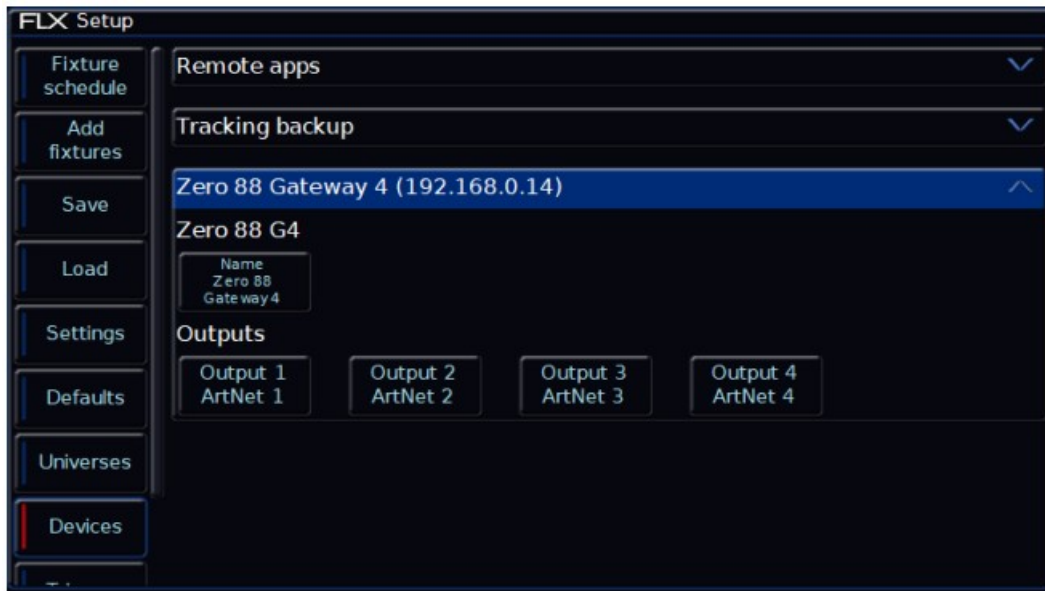


## Contents

- [1 Art-Net Devices DMX ArtNet Lighting Console](#)
- [2 Documents / Resources](#)
  - [2.1 References](#)
- [3 Related Posts](#)

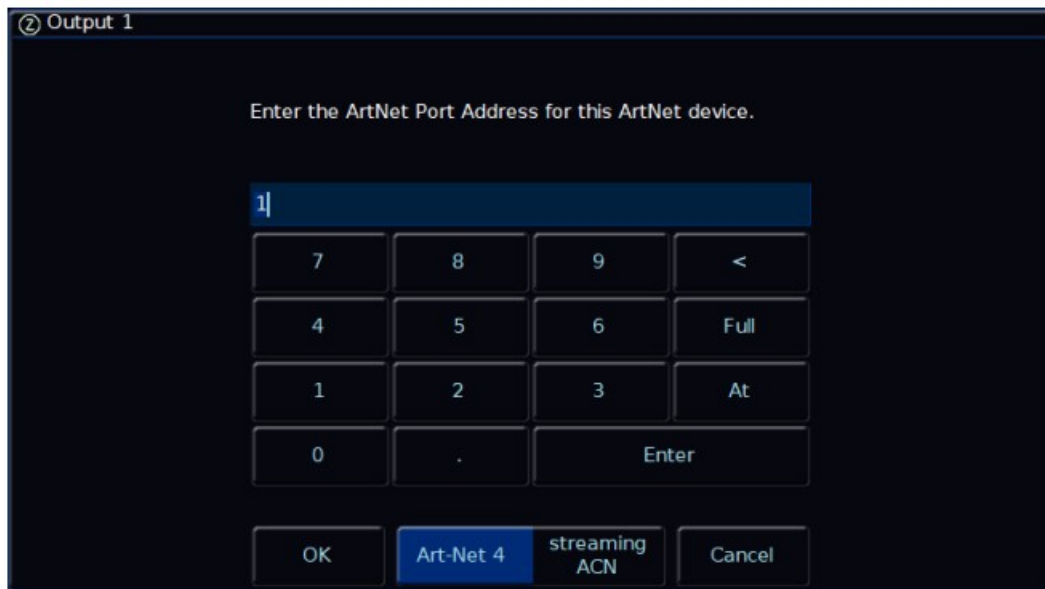
## Art-Net Devices DMX ArtNet Lighting Console

If you enable the Art-Net protocol in the Universes tab of Setup, any Art-Net devices ZerOS can see will be displayed in the Devices tab.



In this image, Zero 88 Gateway 4 can be seen by ZerOS. This is how most Ethernet to DMX gateways (sometimes referred to as “nodes”) will be displayed in Devices.

In the panel header of an Art-Net device, the name of the device will be displayed, along with the IP address. The name of the device can be customised, by clicking on the name field in the device’s panel. This is very useful if you have multiple gateways in different locations.



You can also remotely configure the individual DMX Output ports of the gateway using the “Outputs” fields. This allows you to choose which Art-Net universe that physical port will output. For example, you may configure all the ports to output Art-Net universe 1.

With some Ethernet to DMX Gateways, such as Gateway 4 and Gateway 8, you can remotely configure whether the port outputs sACN or Art-Net data. This allows you to use the sACN standard for your DMX over Ethernet, and then just use Art-Net for configuration and monitoring. This is configured with the switch at the bottom of the Output port configuration window, if your particular Ethernet to DMX gateway has this capability.



