



## ZEPHYR ZP-1171-L 3 in 1 Espresso Coffee Maker Machine Instructions

[Home](#) » [ZEPHYR](#) » ZEPHYR ZP-1171-L 3 in 1 Espresso Coffee Maker Machine Instructions 

### ZEPHYR ZP-1171-L 3 in 1 Espresso Coffee Maker Machine Instructions



## Contents

- 1 Safety precautions
- 2 Unpacking
- 3 Starting up
- 4 Overview of machine parts and controls
- 5 Factory default setting
- 6 Cleaning
- 7 Warning tips
- 8 Documents / Resources
  - 8.1 References
- 9 Related Posts

## Safety precautions

Please take time to read these safety precautions carefully before connecting your machine to the power supply. It is essential to follow them and the operating instructions.

- First read this entire operating manual.
- Danger of electric shock! Never immerse the machine in water or any other liquid.
- Connect only to a properly grounded power point.
- To make sure that the machine is switched off, remove the plug from the power point.
- Always pull out the power plug before:
  - Relocating the machine.
  - Cleaning or maintenance.
  - Long periods of disuse.
- Never clamp or run the power cable over sharp corners or edges.
- Danger of electric shock! Damaged power cables may only be replaced at the customer service centre.
- Danger of electric shock! Never touch the power plug/socket/cable or the machine with damp or wet hands. Never unplug by pulling out the power cable; always remove the plug.
- If you need an extension cable, make sure it is suitable for your machine (3-pole grounded, 1.5 mm<sup>2</sup> conductor cross-section), and lay the cable to avoid tripping.
- Danger of scalding! Never move the machine during operation!
- Never operate the machine without water
- Always make sure there is water in water tank not less than minimum level.
- Danger of burning! Never touch very hot parts of the machine (e.g. brew unit during operations).
- Danger of scalding! Do not touch the steam or water jets.
- Danger of scalding! Do not move the operating lever when the machine is still under pressure making Coffee .
- Do not use the machine in case of:
  - Faulty operation.
  - Damaged power cable.
  - After falling or other damage.
  - In such cases immediately have the machine checked and repaired if necessary at the customer service centre.
- The machine location must meet the following requirements:
  - Choose a dry, stable and level support surface not immediately underneath the power point. at least 60

cm away from the washbasin and taps.

- Never place on flammable/fusible surfaces or equipment.
- Never place the machine or power cable on or nearer than 50 cm to hot surfaces or open flames.
- Never cover the machine during operation.
- Keep children away from the machine during operation.
- Only use the machine in dry rooms.
- Danger of tripping! Do not let the power cable hang down.
- This machine is only intended for household use.
- Pull out the power plug and allow the machine to cool down completely before cleaning and or Maintenance.
- To prevent damage, never use replacement parts or accessories not recommended by the manufacturer

This appliance can be used by children aged from 8 years and above if they have been given supervision or instruction concerning use of the appliance in a safe way and if they understand the hazards involved. Cleaning and user maintenance shall not be made by children unless they are older than 8 and supervised. Keep the appliance and its cord out of reach of children aged less than 8 years.

Appliances can be used by persons with reduced physical, sensory or mental capabilities or lack of experience and knowledge if they have been given supervision or instruction concerning use of the appliance in a safe way and understand the hazards involved. Children shall not play with the appliance.

This appliance is not intended for use by persons (including children) with reduced physical, sensory or mental capabilities, or lack of experience and knowledge, unless they have been given supervision or instruction concerning use of the appliance by a person responsible for their safety.

Children should be supervised to ensure that they do not play with the appliance.

If the supply cord is damaged, it must be replaced by the manufacturer, its service agent or similarly qualified persons in order to avoid a hazard.

This appliance is for household and indoor use only.

The appliance must not be immersed

**Caution!** There is potential injury from misuse.

Heating element surface is subject to residual heat after use.

coffee-maker shall not be placed in a cabinet when in use cleaning and user maintenance shall not be made by children without supervisor

This appliance is intended to be used in household and similar applications such as:

- Staff kitchen areas in shops, offices and other working environments;
- Farm houses;
- By clients in hotels, motels and other residential type environments;
- Bed and breakfast type environments.

## **Notes on this operating manual**

This operating manual cannot cover all possible circumstances. For further information or in case of problems not adequately covered in this operating manual, please contact the service and sales centre.

Please keep this operating manual safe and pass it on to the next user.

## **Unpacking**

Remove your espresso Capsule coffee machine from its packaging.

After unpacking, please check that the following parts are included:

1. Water tank
2. Coffee machine
3. Manual

**Note:**

Check that your home power supply voltage is the same as marked on the machine rating plate  
Destroy all the plastic bags to prevent danger to children!

**Tip:**

Keep the packaging for transporting the machine (e.g. for removals, servicing, etc.)

**Note:**

You may find a little water remaining in the machine.

In order to ensure that this machine works perfectly, it was tested with water before leaving the factory.

**DANGER OF FROST**

## **Starting up**

### **Before using for the first time**

Caution: Improper handling of electrical equipment is dangerous and can be lethal. Please pay attention to the safety precautions in this manual, in particular the following:

- Danger of scalding: beware of hot water!
- Do not operate the machine with an empty water tank or water is less than MINIMUM level.
- Do not open the handle when the machine is brewing.
- Always pull out the power plug before cleaning the machine.
- Only use the machine in a dry room.
- Thoroughly rinse out the water tank with fresh water before using for the first time. Clean the Capsule coffee machine using a damp cloth only.

Before using for the first time or after long pauses (e.g. holidays) the machine may be difficult to pump water, this short procedure can help pump to self priming by using the pipe to fill water into the circuit manually prior to turn on the machine for first refill.

Step 1# :insert the pipe into the water entrance.

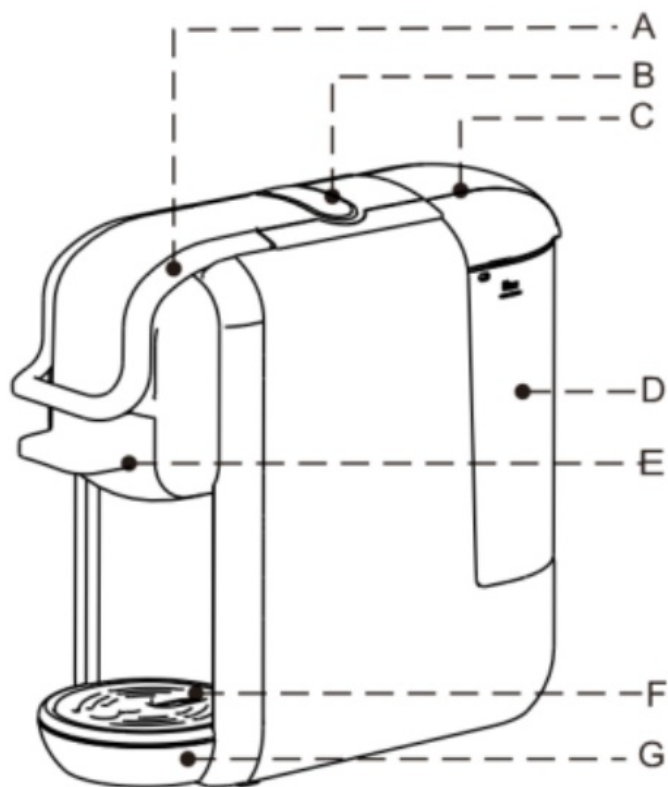
Step 2# :fill water into the pipe.

Step 3# : inject the water from pipe into the machine so that the internal circuit is filled with water

After above steps, the machine will be able to pump water out normally.

If necessary, repeat the steps for 2 or 3 times.

## **Overview of machine parts and controls**



No.	Name
A	Handle
B	Buttons
C	Water tank cover
D	Water tank
E	Brewing basket
F	Drip tray cover
G	Drip tray (removable)

Before using for the first time or after long pauses (e.g. holidays) the machine must be flushed out. This short procedure can flush out and cleans the internal piping thoroughly.

There are two ways to fill the water tank: directly into the machine, by using for example a jug, or by removing the water tank

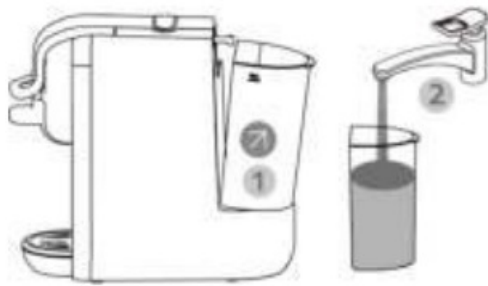
### 1. Filling without removing the tank

- raise the water tank cover
- Fill the tank with cold fresh water (the maximum temperature of the water is 35°C)
- the maximum capacity is 0.6 litre
- low down the tank cover



### 2. Filling by removing the water tank

- Hold the water grip at tilting angle as shown in direction to remove the water tank from the machine. Fill the tank up to the “MAX” mark with cold fresh water (the maximum capacity is 0.6 litre).
- Slide the water tank slowly on water tank base, when the water tank outlet is inserted in the inlet receptacle, pushing firmly on the water grip as shown in direction to lock the water tank .

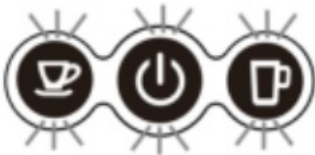


3.

4. Press the switch button



The lights at buttons become steady when the machine is heated up heating up time is 45 seconds



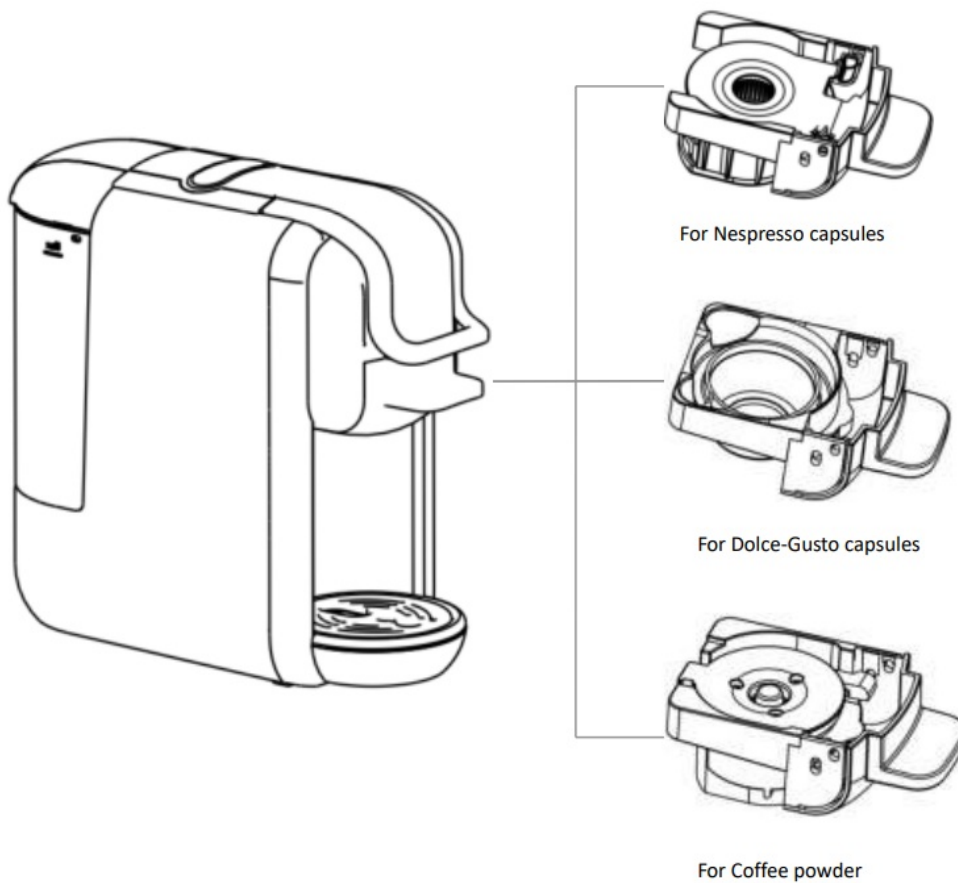
5. Press the lungo coffee button, wait for the appliance to complete the flush out.

- Before pressing the button, make sure that:
- the handle is closed without capsule inside.
- the water tank is full.
- the water tank is firmly in place, otherwise water may leak
- a large bowl ( 250ml size or above) is placed under the dispenser.
- press the lungo coffee button to start flush out.
- Open the handle when the flush out process stopped automatically.
- Empty the cup.
- flush out cycle is finished.





**Tips:** The machines has different adaptor for different capsules,details refer to below



### For Nespresso capsules



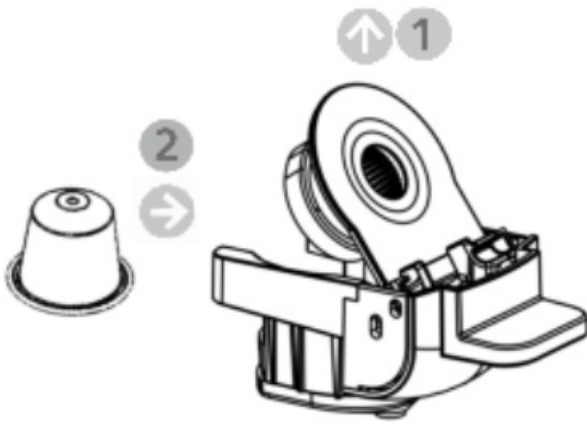
#### 1. Open the handle

Pull out the brewing basket for Nespresso capsules , this is normal perform.



#### 2. Press the brewing basket cover lid

Insert a capsule to the brewing basket.



3. Push in the brewing basket with capsule.  
Close the handle. normal perform.



4. Place a cup under the dispenser

Press the desired coffee button only once

The selected button will blink and the machine will start brewing then complete the brewing process, dispensing will stop automatically when reaching the default brewing time (25s for short espresso, 47s lungo coffee), default setting can be programmed, please refer to “how to program brewing time” instruction.

Raise the handle and pull out the brewing basket to inject used capsule into the container.

**Tips:** when press the button, maybe the desired button LED flash a few seconds first ,then start brewing. the flash process is for heating, this is normal perform.



**For Dolce-Gusto capsules**

1. Open the handle

Pull out the brewing basket for Nespresso capsules , this is normal perform.



2. Insert a capsule to the brewing basket.



3. Push in the brewing basket with capsule.

Close the handle. normal perform.



4. Place a cup under the dispenser

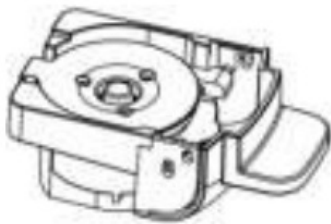
Press the desired coffee button only once

The selected button will blink and the machine will start brewing then complete the brewing process, dispensing will stop automatically when reaching the default brewing time (25s for short espresso, 47s for lungo coffee), default setting can be programmed, please refer to "how to program brewing time" instruction. Raise the handle and pull out the brewing basket to inject used capsule into the container.

**Tips:** when press the button, maybe the desired button LED flash a few seconds first ,then start brewing. the flash process is for heating, this is normal perform.

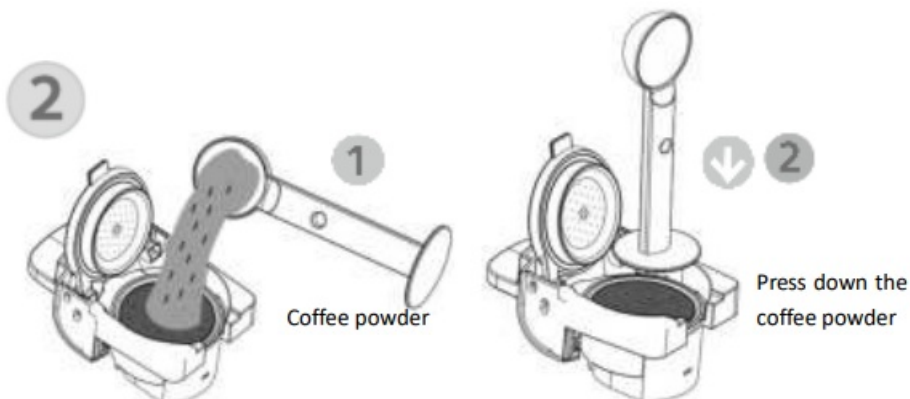


### For Coffee powder



#### 1. Open the handle

Pull out the brewing basket for Nespresso capsules , this is normal performe.



#### 2.

#### 3. Push in the brewing basket with capsule.

Close the handle. normal perform.



#### 4. Place a cup under the dispenser

Press the desired coffee button only once

The selected button will blink and the machine will start brewing then complete the brewing process, dispensing will stop automatically when reaching the default brewing time (25s for short espresso, 47s for lungo coffee), default setting can be programmed, please refer to “how to program brewing time” instruction. Raise the handle and pull out the brewing basket to inject used capsule into the container.

**Tips:** when press the button, maybe the desired button LED flash a few seconds first ,then start brewing. the flash process is for heating, this is normal perform.

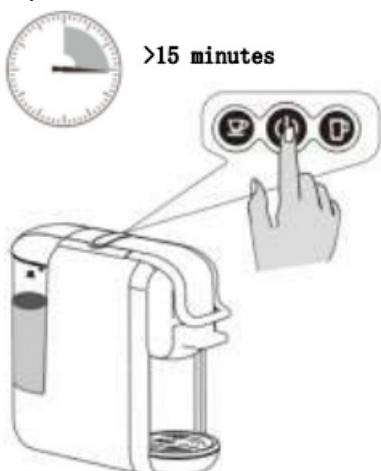


### Standby Mode

Factory Default setting: Standby Mode: 15 mins

It means the machine will be turn off after 15 mins, and all the indicator lights will be off.

To press the switch button to activate the standby mode again if the machine is in Standby mode



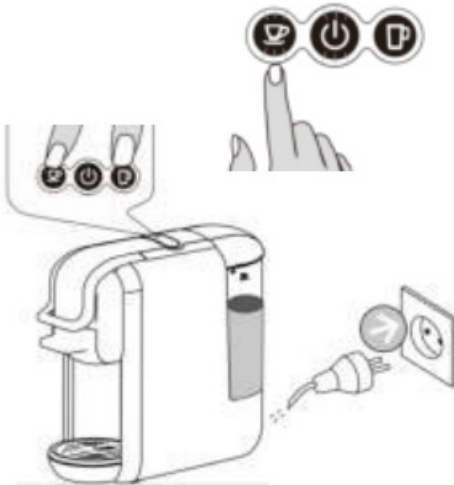
Standby mode setting:

Keep pressing the small cup button and big cup button,insert the plug to the socket .

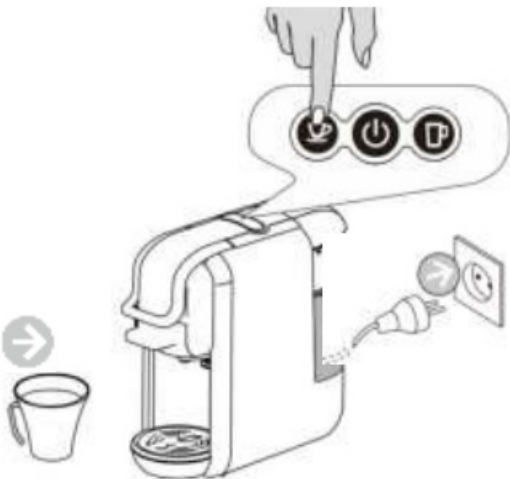
Switch button light will be on

Press small cup button,Small cup button light off,Standby mode cancelled.

Press small cup button,small cup button light



### Clean mode function



1. Put a cup in front of the machine

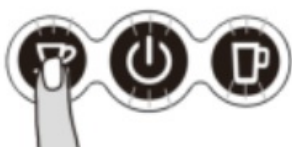
Put some detergent into the water tank

2. Press the short espresso button and connect the power plug at the same time.

3. The switch button and short espresso button are lighted, press the short espresso button to Start to clean, work time 120S.press the small cup button to stop

### Coffee Volume Setting

Small Cup volume setting



1. Put coffee cup under the coffee outlet
2. The machine is in normal working condition.Keep pressing the small cup button,then release the button till you get the coffee you want(Min:15S,Max:90S)

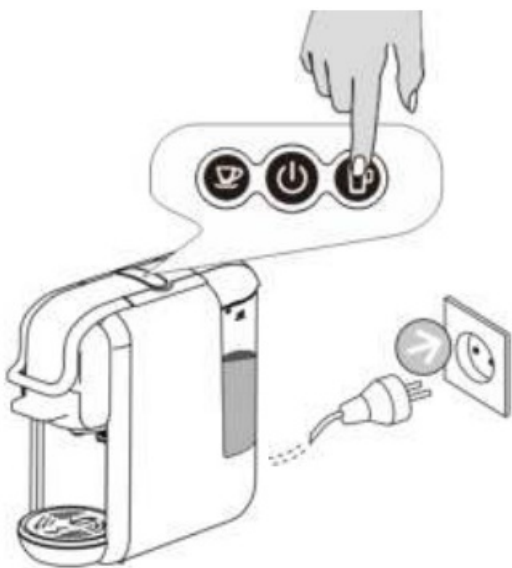
#### Big Cup volume setting



1. Put coffee cup under the coffee outlet
2. The machine is in normal working condition.Keep pressing the big cup button,then release the button till you get the coffee you want(Min:15S,Max 90S)

#### Factory default setting

Press the big cup button,insert The plug to the socket.The Indicator light of buttons will Flash twice.It means the machine Come back to factory default setting

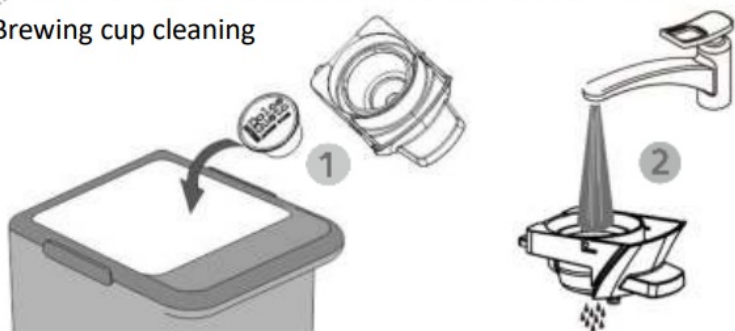


#### Cleaning



Risk of fatal electrical shock and fire. Never immerse the appliance or part of it in water. / Be sure to unplug the machine before cleaning. / Do not use any strong cleaning agent or solvent cleaner. / Do not use sharp objects, brushes or sharp abrasives. / Do not place in a dishwasher.

### Brewing cup cleaning



### Holistic cleaning

Dry with a fresh and clean towel, cloth or paper and reassemble all parts. Clean the coffee outlet and inside the machine regularly with a damp cloth.



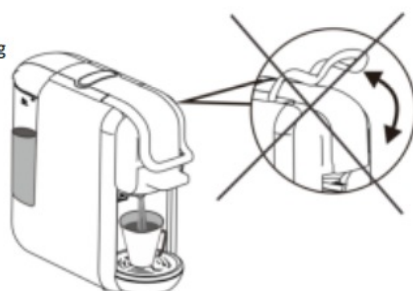
### Warning tips



Prohibit to pull water to the machine



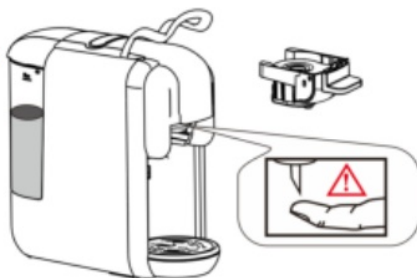
Prohibit to open the handle when brewing



Before brewing, to be sure there is not less 20ml water keep in the water tank



There is sharp needle upper the capsule Adaptor. Prohibit to put the hand or Finger to any part near the needle After the adaptor is removed.



Daptor is still very hot after brewing  
Be careful the HOT!



## Energy saving mode

The machine enters energy saving model automatically once the machine is idle for 15 minutes, the back light of two buttons and power indicator will off.

to quite energy saving mode, please press power button , appliance will start to warming up with lights blinking, when the buttons are lit steadily, the machine is ready to brew coffee.

## Decalcification

### Decalcification / Maintenance

Drinking water varies according to region. The lime particles in hard drinking water are deposited as residues in the machine and can block the piping and cause damage. To prevent this, be sure to decalcify the machine at the very least after making 300 to 400 cups of coffee or, in any case if the output falls significantly or, after one or two months.

Decalcification must be done correctly to prevent damage. So it is essential to follow these instructions.

### Important:

Never clean the machine with vinegar. This causes damage and makes your coffee taste bad


Damage caused by incorrect decalcification or failure to decalcify is not covered by the guarantee

**Caution:** beware of hot water!

1. Recommendations: purchase commercially available decalcifier (decalcifying liquid), diluted according to the manufacturer's instructions; pour the mixture in the water tank
2. Make sure there is without capsule inside the machine.
3. Place a large bowl under the dispensing head to collect the decalcification diluted and lime residues
4. Fill the water tank with water to maximum level mixed with decalcifying solution, make sure the solution is dissolved completely.
5. Press the lungo button to run decalcifying water as you brew coffee normally, repeat for several times to run out the entire tank water.
6. Repeat the process to run another tanks of water mixed with decalcifying solution.
7. Repeat the process to Flush out the intern circuit with a tank of fresh water (without the decalcifying solution) to clean the internal circuit completely.

PROBLEM	CAUSE	SOLUTION
No coffee is brewed.	The water tank is empty.	Fill water in the water tank.
The coffee is not hot enough.	-the Cold cups / mugs. – Scale build-up in machine. – Cold machine.	Preheat cup / mug. – Descale. – For cold machine, brewing a cup of water to warm up the circuit
Water on table	Water tank is leaking. – – drip tray is full of water.	– Check if the valve on water tank is stuck. – – empty the drip tray.
Handle can not close	– the brewing basket is not placed well	-Push the brewing basket into correct position

## Documents / Resources

	<a href="#">ZEPHYR ZP-1171-L 3 in 1 Espresso Coffee Maker Machine</a> [pdf] Instructions ZP-1171-L, 3 in 1 Espresso Coffee Maker Machine, Espresso Coffee Maker Machine, Coffee Maker Machine, Maker Machine, ZP-1171-L
---	--

## References