

ZEPHYR KM02 Tri Mode Lightweight Gaming Mouse



ZEPHYR KM02 Tri Mode Lightweight Gaming Mouse User Manual

[Home](#) » [ZEPHYR](#) » ZEPHYR KM02 Tri Mode Lightweight Gaming Mouse User Manual 

Contents

- [1 ZEPHYR KM02 Tri Mode Lightweight Gaming Mouse](#)
- [2 Function layout](#)
- [3 FCC](#)
- [4 Documents / Resources](#)
 - [4.1 References](#)
- [5 Related Posts](#)

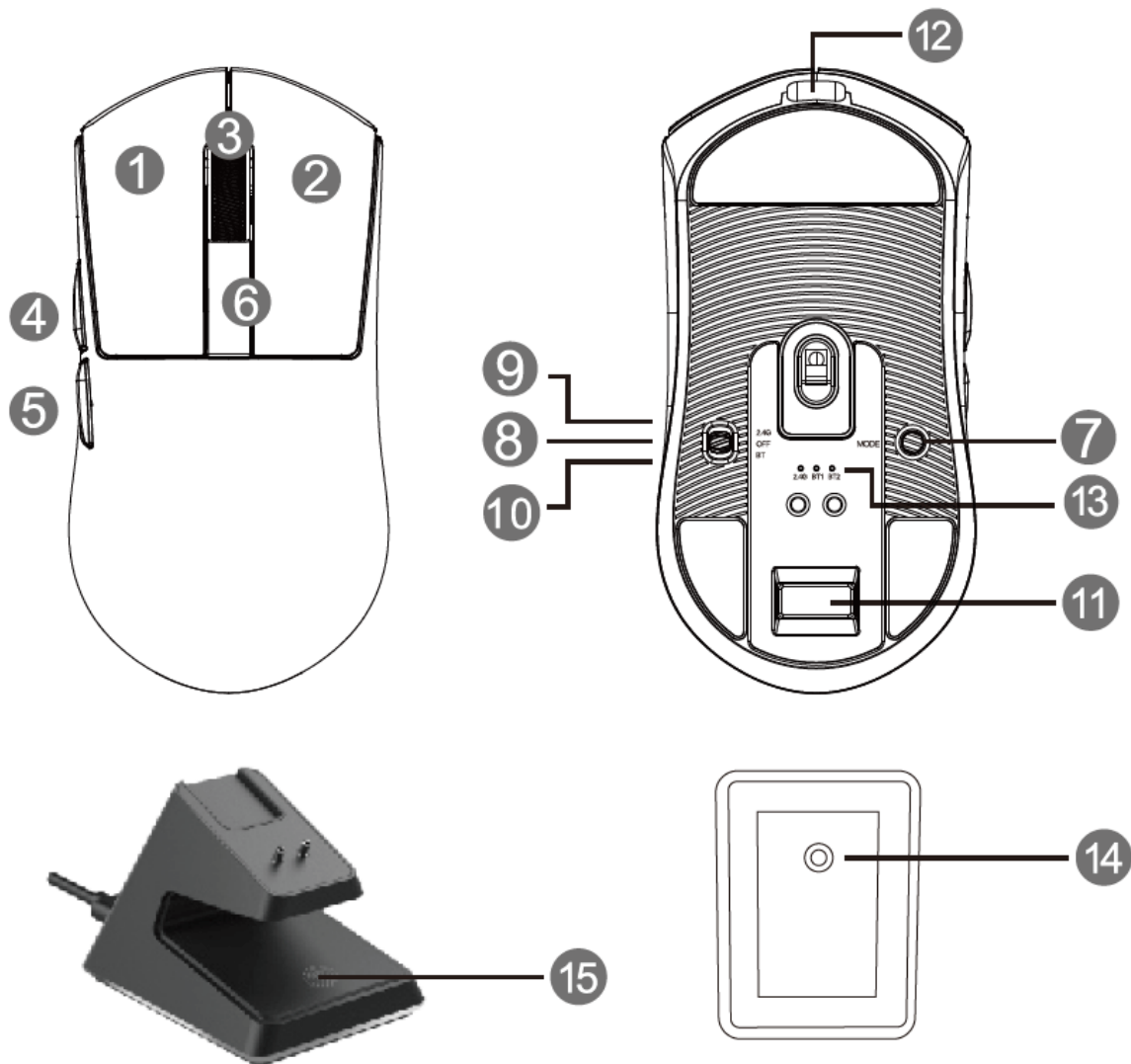
ZEPHYR

ZEPHYR KM02 Tri Mode Lightweight Gaming Mouse



Function layout

1. Left click
2. Right click
3. Middle click/Screen
4. Forward
5. Backward
6. DPI/Screen
7. Pairing button/Mode button



Mouse Instructions:

1. remove the USB Nano receiver
2. Plug the receiver into charging dock USB port, Plug one end of the cable into the computer USB port and the other into the dock.
3. Turn on the mouse by switching on the power switch at the bottom of the mouse
4. Wait for the computer installation to finish

DPI setting and Indicator:

1. Default DPI levels: 800-1200-1600-3200-5600-26000 DPI levels
2. Press the DPI button on the top of the mouse to cycle through the DPI levels

Note:

1. DPI levels can be adjusted by the software. Max DPI is 26000 DPI

Power switch function:

1. Switch at Position 8 : Turns off the mouse
2. Switch at Position 9: 2.4G mode
3. Switch at Position 10: Bluetooth mode (BT 5.2)

USB wired mode

No matter the mode switch is in any position, after put in the TYPE-C cable, it automatically switches to the wired mode, and starts charging, and the screen displays "USB".

2.4G mode

1. put the power switch to "2.4G", then mouse start to work (2.4G receiver has paired with the factory default)
2. 2.4G pairing: in 2.4G mode, long press the Pairing button for 3s to enter 2.4G pairing mode (the 2.4G indicator at the bottom of the mouse blinks rapidly, the screen displays "Pairing 2.4G")

BT mode

1. put the power switch to "BT", Press the Pairing/Mode button key to switch BT1 and BT2
2. BT pairing: in BT mode, long press the Pairing button for 3s to enter the Bluetooth search mode (the Bluetooth mode indicator at the bottom will quickly flashes, and screen displays "Linking BT1/2")

Low battery mode

1. In low power

The battery icon is displayed on the screen,

2. Charging state

The battery lightning icon and "Charging" are displayed.

3. Status on full charge Screen text "BAT FULL"
4. The battery voltage is lower than 3.4V "BAT LOW!" is displayed. The battery icon is displayed
5. The voltage is below 3.2V-3.0V

Auto power-off

1. When the mouse is turned on, the default battery level display on the screen is 100%. It takes 5 seconds for the automatic detection to display the correct battery level! Sleep mode
2. After the mouse stops moving for 30s, mouse enters the power-saving sleep state, the screen is closed, and the mouse can be awakened by moving/pressing the button.
3. After the mouse stops moving for 10 minutes, the mouse enters the power-saving sleep state.

Move/press the button to wake up the mouse. This device complies with part 15 of the FCC Rules.

FCC

Operation is subject to the following two conditions:

1. This device may not cause harmful interference, and

2. this device must accept any interference received, including interference that may cause undesired operation.

Note: This equipment has been tested and found to comply with the limits for a Class B digital device, pursuant to Part 15 of the FCC Rules. These limits are designed to provide reasonable protection against harmful interference in a residential installation. This equipment generates, uses and can radiate radio frequency energy and, if not installed and used in accordance with the instructions, may cause harmful interference to radio communications. However, there is no guarantee that interference will not occur in a particular installation.

If this equipment does cause harmful interference to radio or television reception, which can be determined by turning the equipment off and on, the user is encouraged to try to correct the interference by one or more of the following measures:

1. Reorient or relocate the receiving antenna.

Increase the separation between the equipment and receiver.

1. Connect the equipment into an outlet on a circuit different from that to which the receiver is connected.
2. Consult the dealer or an experienced radio/TV technician for help.

Warning: Changes or modifications to this unit not expressly approved by the part responsible for compliance could void the user's authority to operate the equipment.

FCC Radiation Exposure Statement

The device has been evaluated to meet general RF exposure requirements. The device can be used in portable exposure conditions without restriction.

Documents / Resources



[ZEPHYR KM02 Tri Mode Lightweight Gaming Mouse](#) [pdf] User Manual
KM02, KM02 Tri Mode Lightweight Gaming Mouse, Tri Mode Lightweight Gaming Mouse,
Lightweight Gaming Mouse, Gaming Mouse, Mouse

References

- [User Manual](#)

[Manuals+](#), [Privacy Policy](#)

This website is an independent publication and is neither affiliated with nor endorsed by any of the trademark owners. The "Bluetooth®" word mark and logos are registered trademarks owned by Bluetooth SIG, Inc. The "Wi-Fi®" word mark and logos are registered trademarks owned by the Wi-Fi Alliance. Any use of these marks on this website does not imply any affiliation with or endorsement.