

Zennio ZS55 Series Decorative Frames



Zennio ZS55 Series Decorative Frames Instruction Manual

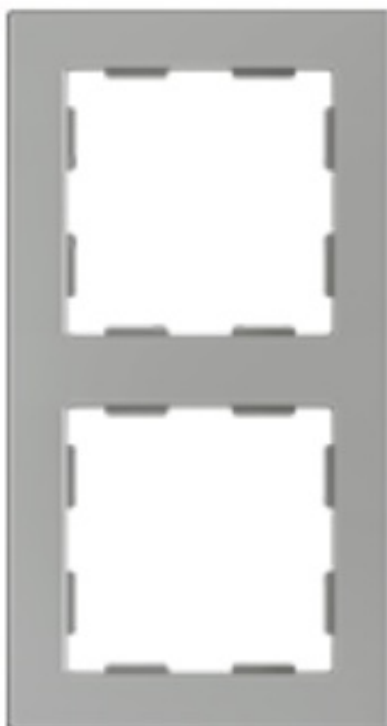
[Home](#) » [Zennio](#) » Zennio ZS55 Series Decorative Frames Instruction Manual 

Contents

- [1 Zennio ZS55 Series Decorative Frames](#)
- [2 FEATURES](#)
- [3 DIMENSIONS \(MM\)](#)
- [4 TEMPERATURE PROBE INSTALLATION INSTRUCTIONS](#)
- [5 SAFETY INSTRUCTIONS](#)
- [6 FAQ \(Frequently Asked Questions\)](#)
- [7 Documents / Resources](#)
 - [7.1 References](#)



Zennio ZS55 Series Decorative Frames



FEATURES

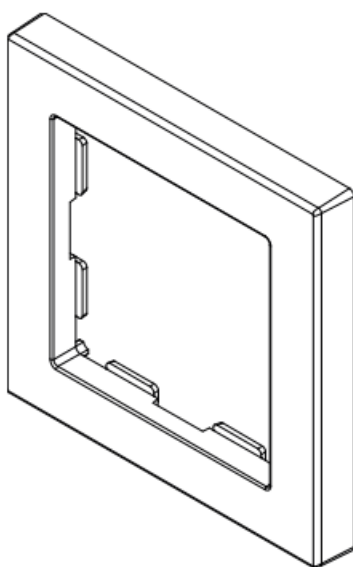


Figure 1. One-gang frame

- Frames for Zennio ZS55 series of switches and sockets.
- Decorative frames with 1 to 4-gang (reference 980000Y0X, where Y = number of gangs, X = color).
- **Available colors:**
 - Anthracite (X=5)
 - Silver (X=6)
 - White (X=7)
- **Low profile:** it protrudes 9.5 mm from the wall.
- **Material:** PC+ABS FR V0 halogen-free.

DIMENSIONS (MM)

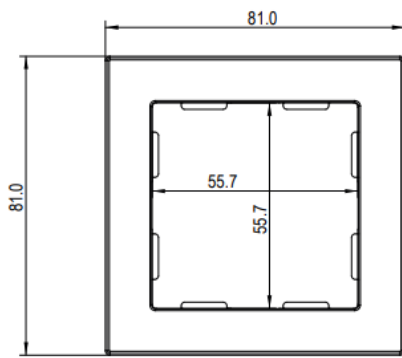


Figure 2. 9800010X

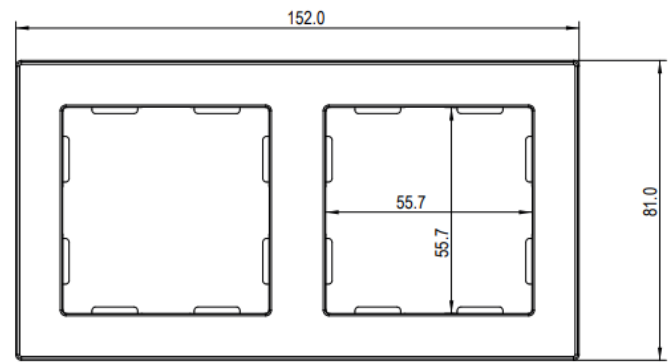


Figure 3. 9800020X

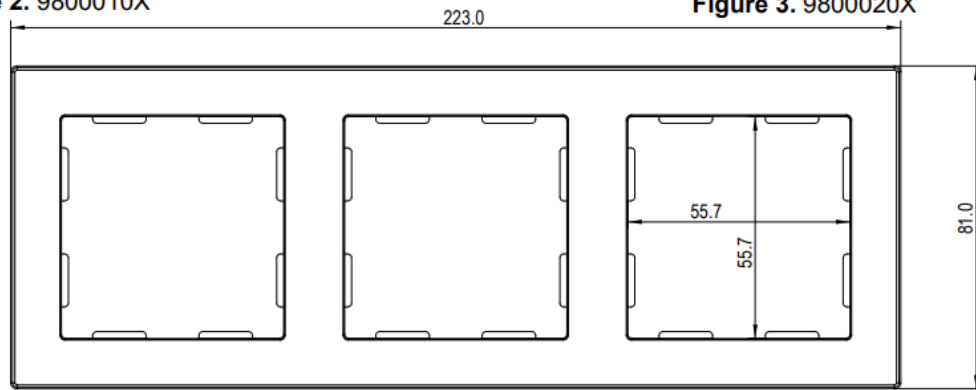


Figure 4. 9800030X

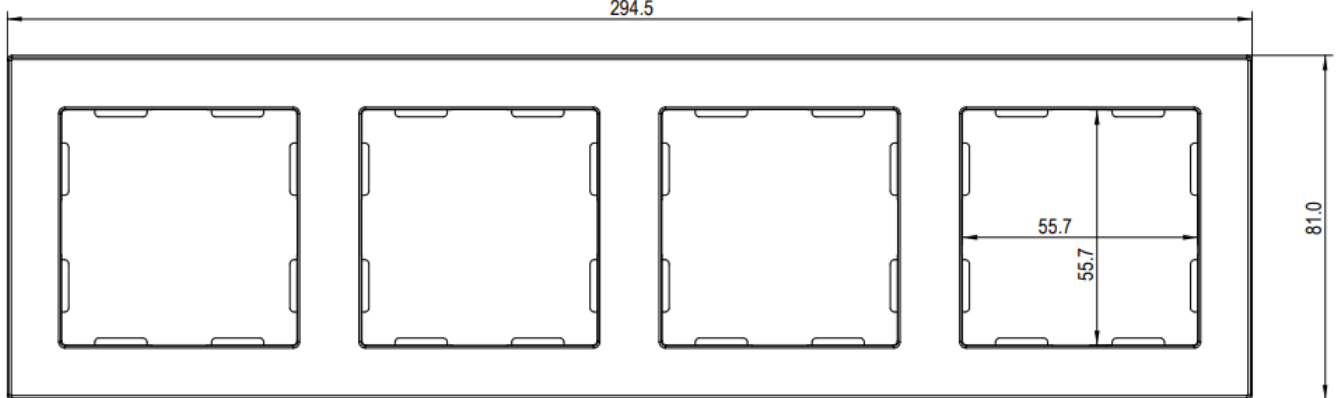
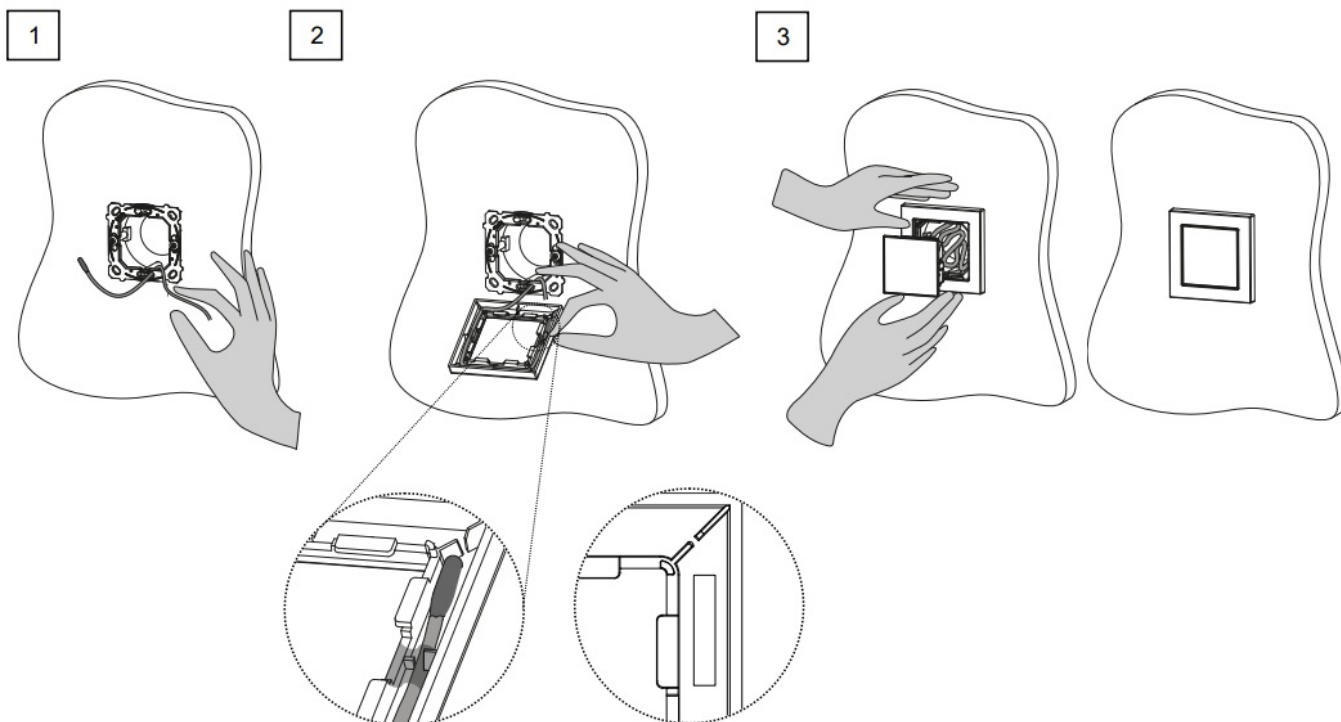


Figure 5. 9800040X

TEMPERATURE PROBE INSTALLATION INSTRUCTIONS

1. Guide the temperature probe cable through an available hole in the metal plate from the inside to the outside.
2. Tape the temperature probe in the grooved area of the frame and guide the excess cable into the grooves in the internal partitions. Ensure that the temperature probe is in one of the lower corners.
3. Place the frame on the metal plate, insert the excess cable into the back box, connect the terminal block to the device, and install it in the frame.



SAFETY INSTRUCTIONS

- Installation should only be performed by qualified professionals according to the laws and regulations applicable in each country.
- Further information www.zennio.com
- Zennio Avance y Tecnología S.L.

FAQ (Frequently Asked Questions)

Q: Can I paint the decorative frames?

A: It is not recommended to paint the frames as it may affect their fit and finish.

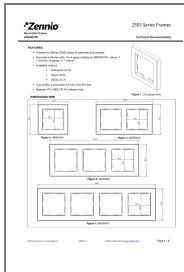
Q: Are the frames compatible with switches from other series?

A: The frames are specifically designed for Zennio ZS55 series switches and sockets and may not be compatible with other series.

Q: What is the fire rating of the material used in the frames?

A: The frames are made of PC+ABS FR V0 material which is halogen-free and has a high fire resistance rating.

Documents / Resources



[Zennio ZS55 Series Decorative Frames](#) [pdf] Instruction Manual
ZS55 Series Decorative Frames, ZS55 Series, Decorative Frames, Frames

References

- [Home En | Zennio](#)
- [Home En | Zennio](#)
- [User Manual](#)

[Manuals+](#), [Privacy Policy](#)

This website is an independent publication and is neither affiliated with nor endorsed by any of the trademark owners. The "Bluetooth®" word mark and logos are registered trademarks owned by Bluetooth SIG, Inc. The "Wi-Fi®" word mark and logos are registered trademarks owned by the Wi-Fi Alliance. Any use of these marks on this website does not imply any affiliation with or endorsement.