



# ZENDURE AB1000 SolarFlow Add-on Battery User Manual

[Home](#) » [ZENDURE](#) » ZENDURE AB1000 SolarFlow Add-on Battery User Manual 

## Contents

- [1 ZENDURE AB1000 SolarFlow Add-on Battery](#)
- [2 CONTENTS](#)
- [3 Specifications](#)
- [4 Safety Guidelines](#)
- [5 Important Tips](#)
- [6 Getting Started](#)
- [7 FAQs](#)
- [8 Warranty Period](#)
- [9 Documents / Resources](#)
  - [9.1 References](#)

# ZENDURE

**ZENDURE AB1000 SolarFlow Add-on Battery**



## DISCLAIMER

Read all safety guidelines, warnings and other product information in this manual carefully, and read any labels or stickers attached to the product before using. Users take full responsibility for the safe usage and operation of this product. Familiarize yourself with relevant regulations in your area. You are solely responsible for being aware of all relevant regulations and using Zendure products in a way that is compliant.

Keep this manual for future reference.

## CONTENTS

1. Before You Begin
2. Specifications
3. Safety Guidelines
  1. Usage
  2. Disposal Guide
  3. FCC Caution
  4. EC DECLARATION OF CONFORMITY
4. Important Tips
5. Getting Started
  1. What's in The Box
  2. Product Overview
  3. Connect with PVHub
  4. Connect with AB1000
  5. Recharging
  6. Firmware Update
6. FAQs

## Before You Begin

The information contained herein is subject to change without notice. For the latest version, please visit <https://zendure.com/pages/download-center>

## Specifications

Model	ZDAB1000
Weight	≈ 11.5kg
Dimensions	350×200×186.5mm
Capacity	960Wh/48V
Type	LiFePO4
Output Power	1200W Max
Input Power	800W Max
Max Extend Number of Battery	4
Max Extend Capacity	3840Wh
IP Level	IP65
Color	Gray
Charging Temperature	0-45°C
Discharging Temperature	-20-45°C
Warranty	10 Years

## Safety Guidelines

### Usage

1. Store product in a cool and dry place.
2. Do not dispose of the product in heat or fire.
3. Do not expose to moisture or submerge it in liquid.
4. Do not use around strong static electricity or magnetic fields.
5. Do not disassemble the product. Consult official Zendure channels when service or repair is required. Incorrect disassembly or reassembly may result in a risk of fire or injury to persons.
6. When using the product, please strictly follow the operating environment temperature range specified in the user manual. If the temperature is too high, it may result in a fire or explosion; if the temperature is too low, the product performance may be severely reduced, or the product may cease to work.
7. Do not block or obstruct the fan during use or place the product in an unventilated or dusty area.
8. Ensure the product is not hit, dropped, or heavily vibrated. Securely fasten the product when transporting to avoid damage. If severely damaged, turn off the power source immediately and discontinue using the product.
9. If you accidentally drop the product into water during use, please place it in a safe open area, and stay away from it until it is completely dry. The dried product should not be used again and should be properly disposed of according to the Disposal Guide section of this manual.
10. Only clean the ports with a dry cloth.
11. Place on a flat surface to keep the product from falling over. If the product is overturned and severely damaged, turn it off immediately, place the battery in an open area, keep it away from people and combustibles, and dispose of it in accordance with local laws and regulations.
12. Keep out of reach of children and pets.

## Disposal Guide

1. When possible, fully discharge the battery before disposing of it. Consult your local laws on battery recycling and disposal.
2. If the battery cannot be fully discharged due to product failure, contact a professional battery recycling company for further processing.
3. When disposing of secondary cells or batteries, keep cells or batteries of different electrochemical systems separate from each other.

### FCC Caution

This device complies with Part 15 of the FCC Rules.

Operation is subject to the following two conditions: (1) this device may not cause harmful interference, and (2) this device must accept any interference received, including interference that may cause undesired operation.

### EC DECLARATION OF CONFORMITY

ZENDURE TECHNOLOGY CO., LIMITED declares that the SolarFlow product (Smart PVHub and Add on battery AB1000) complies with directive 2014/53/EU (RED) , 2011/65/EU(RoHS) , 2015/863/EU(RoHS).

The full text of the Declaration of Conformity is available at the following web address:<https://zendure.de/pages/download-center>



#### Declaration of conformity

The EU Declaration of Conformity can be requested at the address

<https://zendure.de/pages/download-center>



#### Disposal

Disposal of packaging. Dispose of the packaging separately by type. Dispose of cardboard and paper in the waste paper collection. Foils for recycling collection.



Dispose of old equipment (applies in the European Union and other European countries with separate collection (waste collection))

Old equipment must not be disposed of in household waste! Every consumer is legally obliged to dispose of old equipment that can no longer be used separately from household waste, for example at a collection point for recyclables.

To ensure proper recycling and avoid negative impact on the environment, electronic devices must be taken to a collection point in their community or district. For this reason, electronic devices are marked with the symbol shown here.



Batteries and accumulators must not be disposed of in household waste! As a consumer, you are legally obliged to dispose of all batteries and accumulators, regardless of whether they contain pollutants or not, at a designated collection point. To be delivered to the collection point in your

community/city or to the trade, so that they can be disposed of in an environmentally friendly way. Marked with: Cd = Cadmium, Hg = Mercury, Pb = Lead. Return your product with built-in battery only in a discharged state to your collection point!

## Important Tips

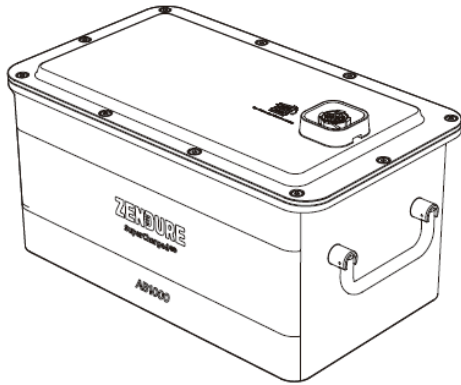
- It is recommended to use this product in an environment at 15°C ~30°C , away from water, fire and other sharp objects.
- For long-term storage, please charge and discharge this product once every 3 months. That is, discharge the product to 30% first, and then recharge it to 60%.
- If the power of this product is lower than 1% after use, please charge it to 60% before storing it. Leaving the

battery discharged for a long time can cause irreversible damage to the battery and shorten the service life of the product.

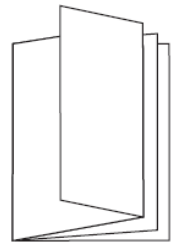
- Do not disassemble the product. When service or repair is required, please consult official Zendure channels. Improper disassembly or reassembly may result in a risk of fire or personal injury.

## Getting Started

### What's in The Box

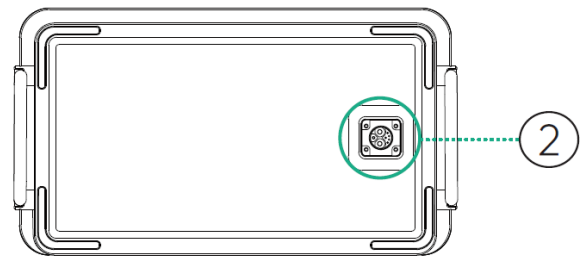
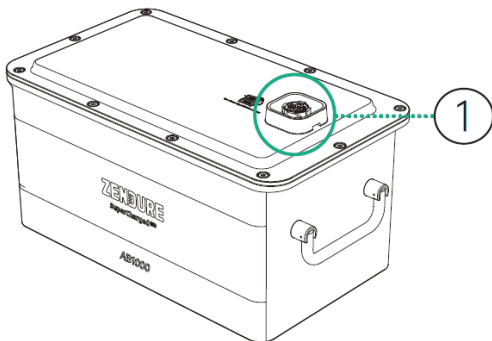


Add-on Battery AB1000



User Manual

### Product Overview



the bottom

### AB1000 Battery Port

1. Connect with PVHub or AB1000 Battery
2. Connect with AB1000 Battery

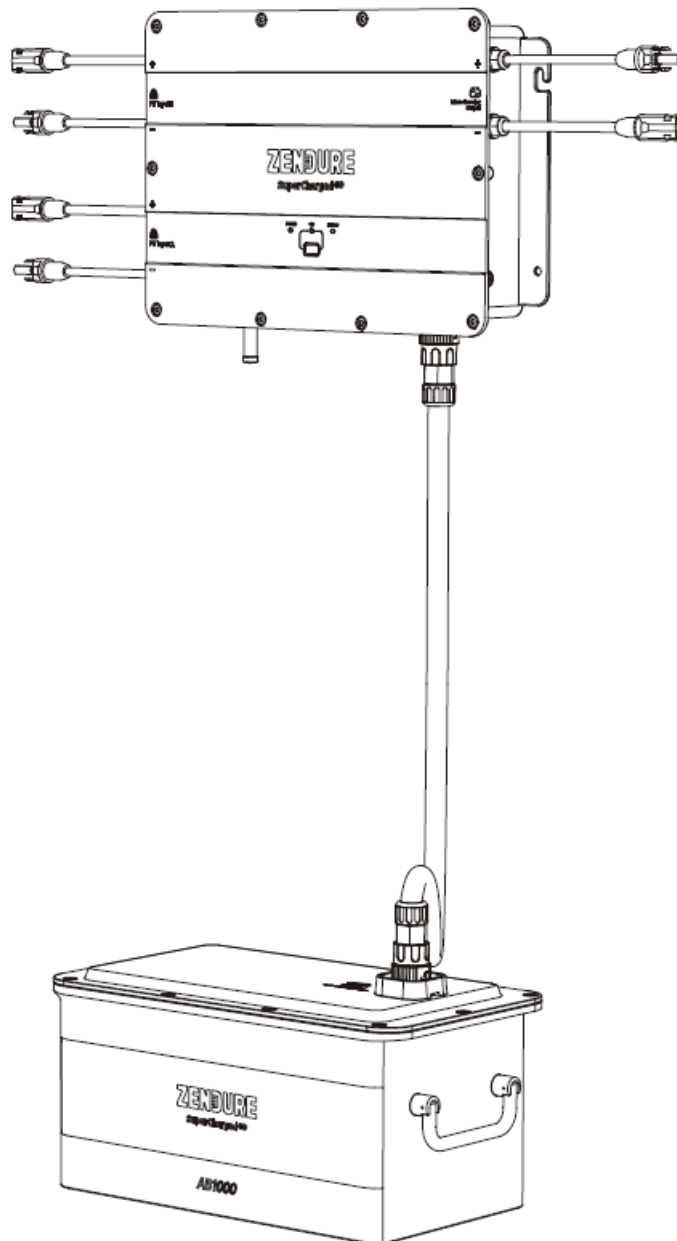
### Connect with PVHub

PVHub can be connected to an AB1000 for capacity expansion. A Battery Cable (not included) is needed. Refer to the user manual of the PVHub for detailed instructions.

### Tips:

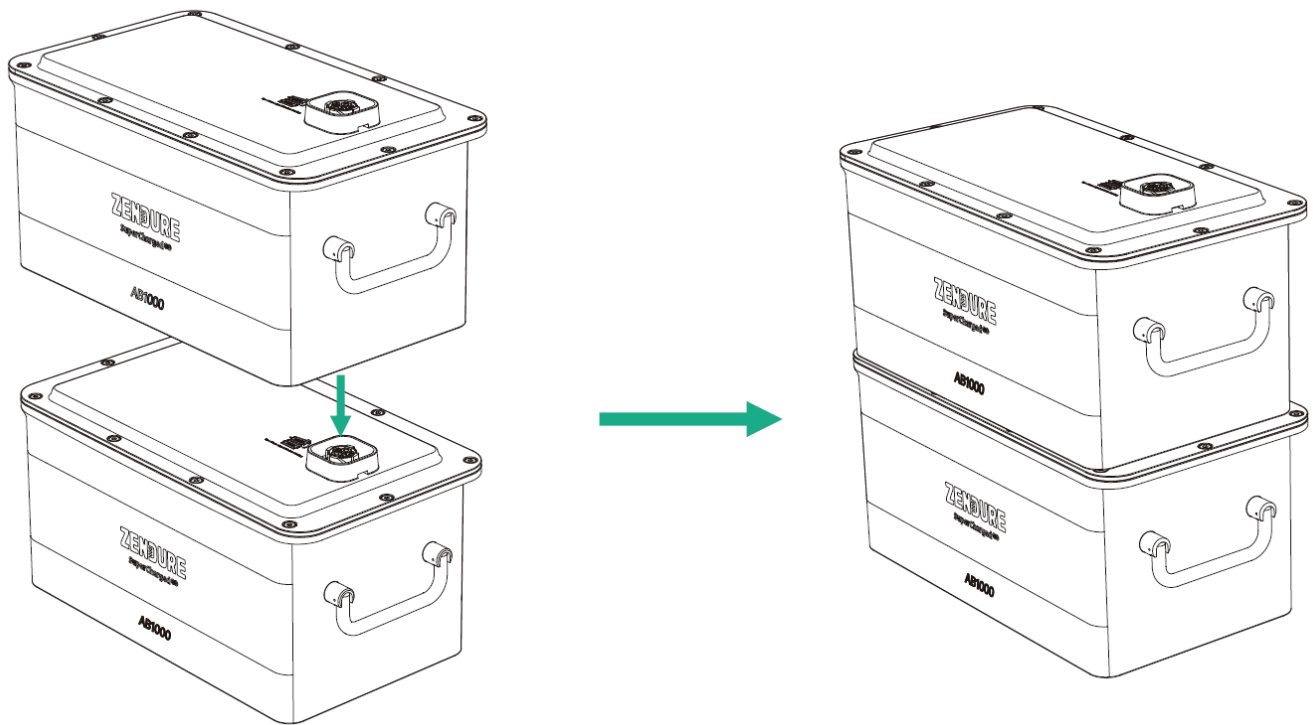
- It's recommended that both PVHub and AB1000 are turned off before connection.
- Make sure to tighten the screw nut after connecting the battery cable.

- The AB1000 icon will show up on the LED Light after connection; then you can start charging or discharging.
- Do not connect the PVHub to the battery during charging/discharging process.
- Do not touch the metal pins of the ports with your hands or other objects. Gently clean them with a dry cloth when necessary.
- Tightly connect the Battery Cable with PVHub and AB1000. A bad connection can affect the device's performance or lead to a fire.



#### **Connect with AB1000**

An AB1000 can be stacked on and connected to another unit. The AB1000 batteries stacked onto one another do not require a Battery Cable for connection.



#### **Tips:**

- It's recommended that AB1000 should be turned off before connection.
- Do not connect them during charging/discharging process.
- Do not touch the metal pins of the ports with your hands or other objects. Gently clean them with a dry cloth when necessary.
- Battery Mounting Bracket is optional for fixing all the AB1000 units securely.

#### **Recharging**

The AB1000 can be charged via PVHub from the solar panel.

#### **Firmware Update**

1. When using your AB1000 for the first time, please connect it to PVHub to check and update to the latest firmware.
2. Zendure App over-the-air (OTA) update Read the Zendure App user guide and access the download link here:  
<https://zendure.com/pages/download-center>

#### **Privacy Policy**

By using Zendure Products, Applications and Services, you consent to the Zendure Terms of Use and Privacy Policy, which you can access via the "About" section of the "User" page in the Zendure App

#### **Tips:**

- Do Not turn off the device during the firmware update.
- Please update the firmware when the capacity is more than 20%, in order to have enough power to complete the update.

## FAQs

1. How many AB1000 batteries can be connected to a single PVHub? – For each PVHub, you can connect up to 4 AB1000 units.
2. Can it be charged and discharged at the same time?
  - No, the AB1000's input/output connections use the same port.
3. Can an AB1000 be charged with solar panels from a different brand?
  - Yes, AB1000 can be charged by other solar panels. Please connect the solar panels to the PVHub, and charge the AB1000 through the PVHub.
4. How do I store my AB1000?
  - For long-term storage, please charge and discharge this product once every 3 months. That is, discharge the product to 20% first, and then recharge it to 80%.

Thank you for choosing Zendure to handle your charging needs. In order to serve you better, please fill out the information below and retain this card for your reference.

### User's Information

User's Name:

Contact Telephone:

Postal Address:

E-mail:

### Product Information Product Model:

Purchase Date:

Store Name and Order ID:

Product Serial Number:

Within the warranty period, you can enjoy return, exchange, and repair services in accordance with these policies.

### Warranty Period

The warranty periods for our products are as follows:



Product	Base Warranty	Warranty Extension*	Total Warranty
SuperBaseV/Satellite Battery/Smart Home Panel	3 Years	2 Years	5 Years
400W Solar Panel/320W Solar Panel/Mobile EV Charger/All SuperBase V related accessories	3 Years	N/A	3 Years
SuperBase Pro/SuperBase M	2 Years	1 Year	3 Years
200W Solar Panel/ All SuperBase Pro and SuperBase M related accessories	2 Years	N/A	2 Years
Power banks	2 Years	N/A	2 Years
Smart PV Hub and AB1000	10 Years	N/A	10 Years
PV Hub accessories, solar cables, battery cables and micro inverter cables	1 Year	N/A	1 Year

A Warranty Extension is offered for some of our products. To receive a warranty extension, you'll need to register your product in the Zendure app, and there may be additional costs or other conditions involved.

The table above indicates the warranty periods for products purchased from Zendure or its retail partners.

Warranty periods for products ordered through Zendure's crowdfunding campaigns (Kickstarter, Indiegogo, etc.) may differ. Please review your product's documentation for more information.

**NOTE:** THIS WARRANTY POLICY IS LIMITED TO ZENDURE PRODUCTS ONLY. IN THE CASE OF ANCILLARY PARTS OR ADD-ON DEVICES SUPPLIED BY ZENDURE, PLEASE REFER TO THE WARRANTY TERMS PROVIDED BY THE RELEVANT MANUFACTURER.

The effective warranty period starts from the date of the product's purchase, as indicated on the appropriate invoice, receipt, or billing statement.

To verify your purchase and to better serve you, we may require information about your order (the sales receipt including date of purchase, order ID/number, and the name of the retailer), your warranty card, and when applicable, your product's serial number.

### Warranty Exclusions

In the event of damage related to the causes listed below, no warranty claims will be acknowledged or accepted. Claims that relate to defects that are caused by the following factors are not covered by Zendure's warranty obligations.

1. Can not provide proof of purchase
2. Force majeure (storm damage, lightning strike, overvoltage, fire, thunderstorm, flooding; social causes such as war, turmoil, government intervention, strikes, embargoes, market conditions, etc.)
3. Accidental damage, misuse, abuse, non-compliant use, normal wear and tear, theft, loss, or confiscation
4. Improper application of electrical supply voltage, current and/or frequency
5. Improper installation, commissioning, start-up, configuration, or operation (contrary to the guidance detailed in the installation manual supplied with each product)
6. Inadequate ventilation and circulation resulting in insufficient cooling and natural airflow

7. Modifications to any part of the product
8. Unauthorized repair attempts
9. Products whose serial number sticker or imprint has been removed, defaced or tampered with
10. Products purchased from unauthorized dealers/resellers
11. Free products/rewards/gifts
12. Products used outside of the purchasing region, and products that are shipped to areas that are not easily accessible by courier or freight services, such as overseas or remote islands
13. Cosmetic or superficial defects, dents, marks or scratches, which do not influence the proper functioning of the product
14. This limited warranty does not cover any battery cell or product containing a battery cell unless you charge the battery cell within sixty (60) days after receiving the product and subsequently charge it at least once every 3 months. Failure to do so will void the warranty for the battery cell and any associated damage or malfunctions.
15. Our warranties are non-transferable from end user to end user.

Furthermore, this limited warranty and related service will not exceed the original cost of the Zendure product. Please note that these warranty terms and conditions are subject to change without prior notice. The Zendure Support Team reserves the right to make a final determination regarding warranty service eligibility, and to determine the appropriate solution, which may include replacement, repair, or refund, at its sole discretion.

### **How to Claim your Warranty**

#### **Step 1**

Claim your warranty on any channel below:

1. [www.zendure.com](http://www.zendure.com)
2. Email to [support-eu@zendure.com](mailto:support-eu@zendure.com)
3. Zendure apps

#### **Step 2**

Please be prepared with documentation or a short video with the following information:

1. Order number
2. Proof of purchase
3. Serial number
4. Visual proof depicting the defect (include video or photo)
5. Email address
6. Contact telephone number
7. Address for receiving the replacement

#### **Step 3**

The Zendure support team will make a final determination regarding warranty service with our RMA report. This may include options such as shipping the product for repair, on-site repair, or replacement.

#### **Step 4**


Ship the item(s) to Zendure with your RMA number included on the shipping label on the outside of the packaging. Do not write the RMA number on the green carton box.

Read the Zendure App user guide and access the download link here:

<https://eu.zendure.com/pages/download-center>



## Documents / Resources

	<p><a href="#">ZENDURE AB1000 SolarFlow Add-on Battery</a> [pdf] User Manual AB1000, PVHub, AB1000 SolarFlow Add-on Battery, AB1000, SolarFlow Add-on Battery, Add-on Battery, Battery</p>
---	--

## References

- [Zendure - SuperCharged | Zendure](#)
- [Zendure EU](#)
- [Contact Us – Zendure EU](#)
- [Download Center – Zendure EU](#)
- [Zendure - SuperCharged | Zendure](#)
- [Contact Us – Zendure](#)
- [Download User Manuals of Zendure Power Stations and Accessories - Zendure](#)
- [SuperCharged – Zendure Deutschland](#)
- [Kontakt – Zendure Deutschland](#)
- [Download Center – Zendure Deutschland](#)