



zencontrol zc-smart-relay-vf Wired / Wireless Relay Controller User Guide

[Home](#) » [zencontrol](#) » zencontrol zc-smart-relay-vf Wired / Wireless Relay Controller User Guide 

zencontrol

Inline relay zc-smart-relay-vf



Contents

- [1 Product range](#)
- [2 Specifications](#)
- [3 Safety information](#)
- [4 Dimensions](#)
- [5 Installation](#)
- [6 Wiring diagram](#)
- [7 System overview: modes](#)
- [8 Documents / Resources](#)
 - [8.1 References](#)

Product range

Order code	Description
zc-smart-relay-vf	Wired / wireless relay controller, field mount, dry contact / volt free

Specifications

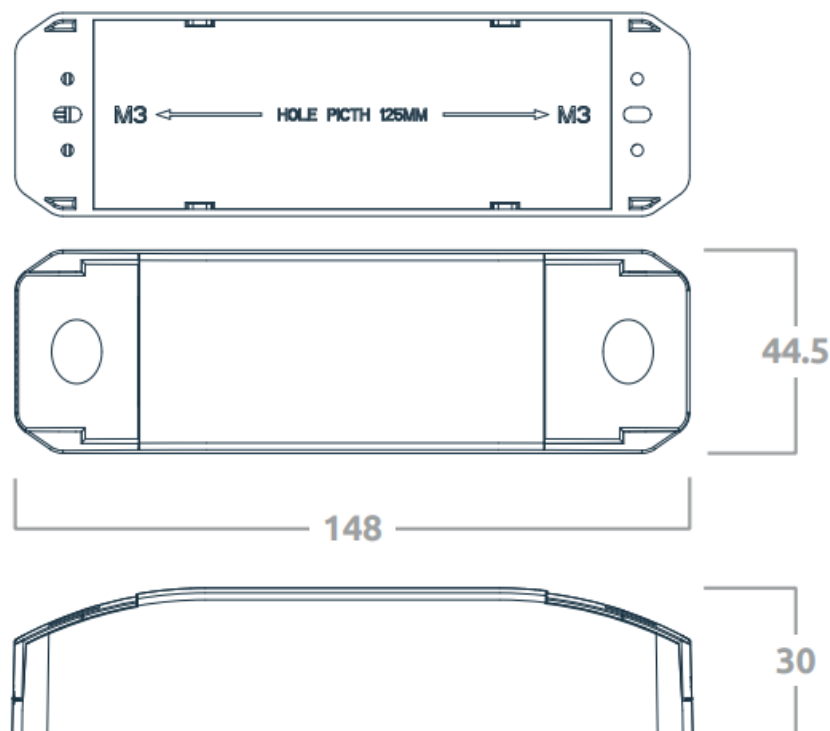
Supply voltage	230 V ~ 50 Hz
Control system	Wired DALI-2 Wireless IEC62386-104 over Thread
Radio support	IEEE 802.15.4
Frequency band	2.4 GHz
Max radio tx power	+8 dBm
DALI line current	2 mA
Output load AC	10 A resistive 6 A inductive
Output voltage rating AC	0 – 240V ~ 50 Hz
Max. in-rush AC	165 A 20ms 492 A 1.5ms
Output rating DC	0 – 25V 3A resistive 25 – 240V 200mA resistive
Output type	Volt free / dry contact
Min. rated relay operations	40 000
Contact rating	100mΩ max. (at 1A 6V dc)
Max. operations per hour	360
Relay type	Non-latching normally open
Wiring	1 – 4 mm ² Strip 6 – 7 mm
Operating temperature	0 to 55°C
Material	PC
Classification	Class III
Ingress protection	IP20

Safety information

- This product must only be installed by a licensed electrician.
- Before commencing installation turn off and isolate the electrical supply.
- There are no user serviceable parts, attempting to service any part of the product will void the warranty
- DALI is not SELV and as such should be treated as LV.
- As the installer, it is your responsibility to ensure you comply to all relevant building and safety codes. Refer to applicable standards for the relevant rules.

Dimensions

Mounting options	Independently mounted control for surface mounting
Fixing centres	125 mm
Dimensions	148 / 44.5 / 30 mm



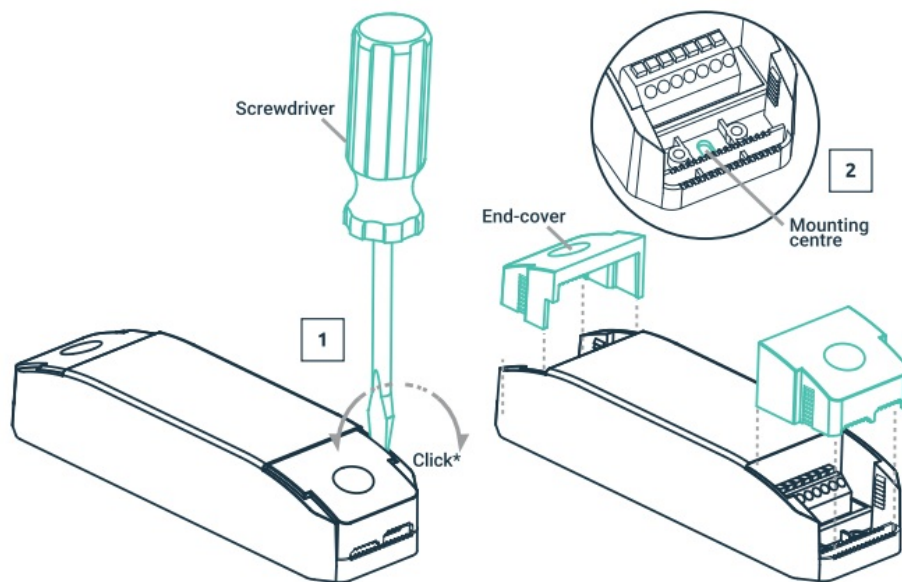
Installation

Remove the product from the box and inspect it for any damage. If you believe the product to be damaged or otherwise unsound, do not install the product. Please pack it back into its box and return it to the place of purchase for replacement.

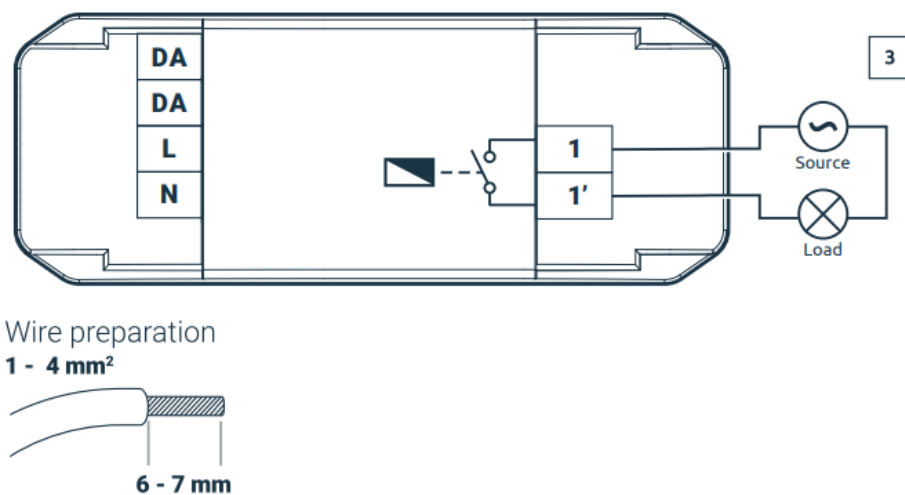
If the product is satisfactory, proceed with the installation:

1. Ensure safety warnings are adhered to.
2. Release the two end covers using a flatblade screwdriver fig 1.
3. Mount driver, fig 2 ,and wire the as per the wiring diagram in fig 3.
4. Replace end covers to ensure adequate strain relief.

⚠ Note relay must have an appropriate MCB to protect the load circuit.

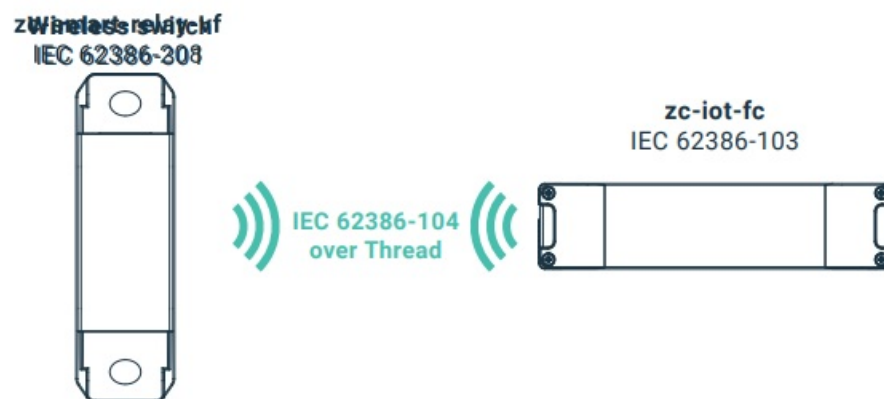


Wiring diagram

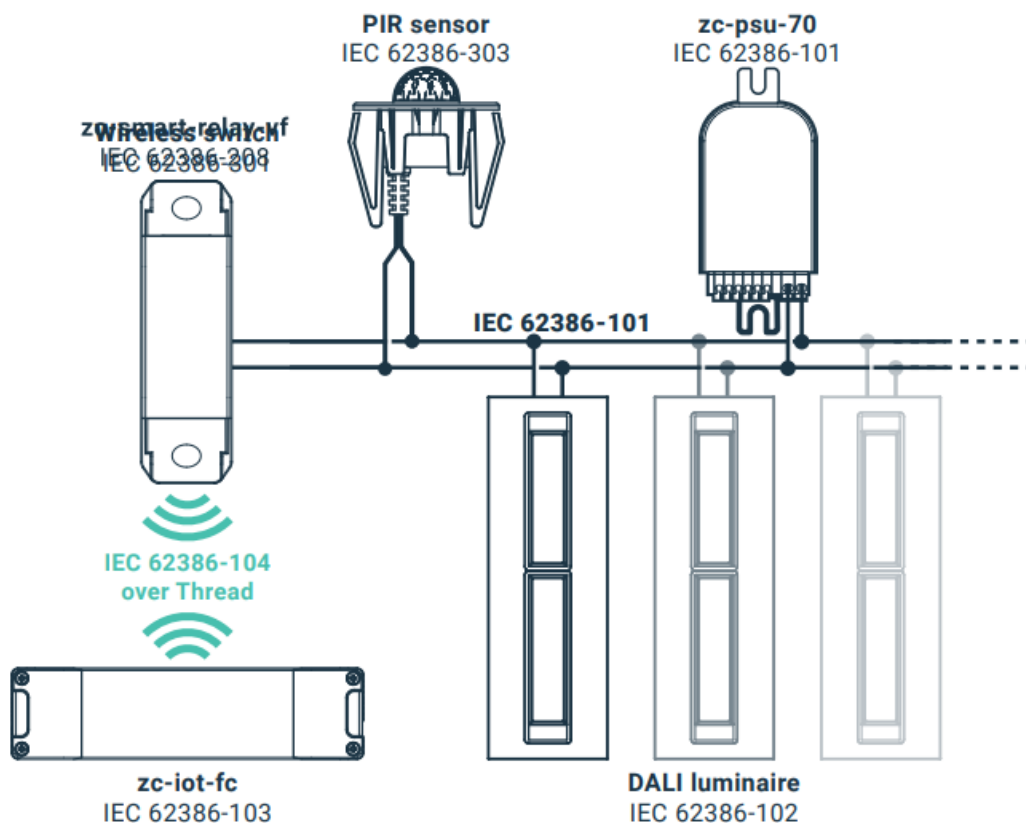


System overview: modes

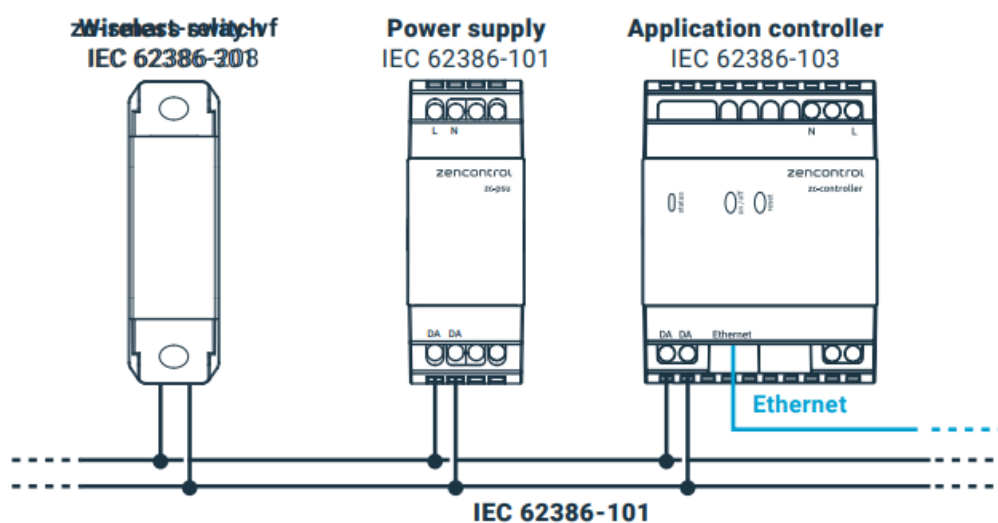
1. 104 mode is enabled after the device has been added to a 104 application controller such as **zc-iot-fc**.



2. 104 + 101 Bridge mode is enabled after the device has been added to a 104 controller and a 101 power supply has been connected to the DALI terminals.



- 101 mode is enabled after a 101 power supply has been connected to the DALI terminal and the device has not been added to a 104 application controller.

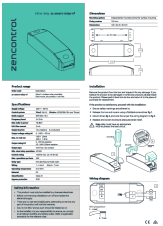


Notice



For more information on compliant software see our website zencontrol.com

Documents / Resources



[zencontrol zc-smart-relay-vf Wired / Wireless Relay Controller](#) [pdf] User Guide
zc-smart-relay-vf Wired Wireless Relay Controller, zc-smart-relay-vf, Wired Wireless Relay Controller, Wireless Relay Controller, Relay Controller, Controller

References

- [User Manual](#)

[Manuals+](#), [Privacy Policy](#)

This website is an independent publication and is neither affiliated with nor endorsed by any of the trademark owners. The "Bluetooth®" word mark and logos are registered trademarks owned by Bluetooth SIG, Inc. The "Wi-Fi®" word mark and logos are registered trademarks owned by the Wi-Fi Alliance. Any use of these marks on this website does not imply any affiliation with or endorsement.