



# zencontrol zc-smart-relay Inline Relay Instructions

[Home](#) » [zencontrol](#) » zencontrol zc-smart-relay Inline Relay Instructions 

Contents

1 zencontrol zc-smart-relay Inline Relay

2 Product range

3 Specifications

4 Safety information

5 Installation

5.1 Wiring diagram

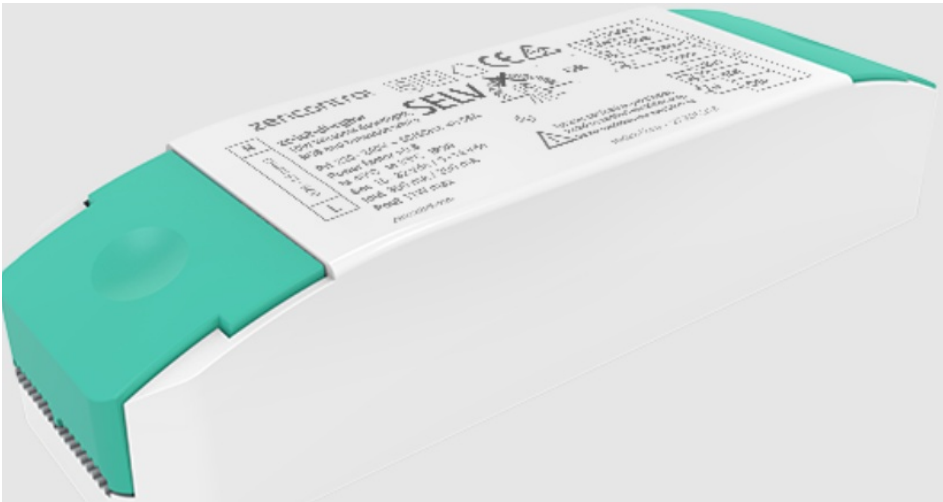
6 Documents / Resources

6.1 References

7 Related Posts



## zencontrol zc-smart-relay Inline Relay



### Product range

- | • Order code     | Description                                    |
|------------------|--|
| • zc-smart-relay | Wired / wireless relay controller, field mount |

## Specifications

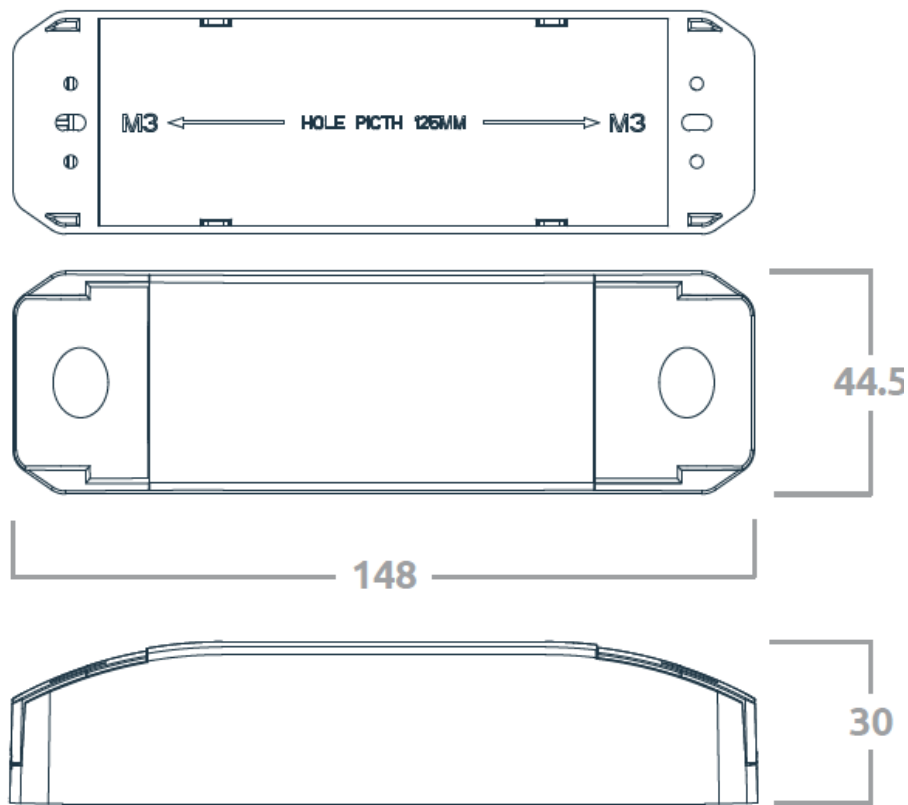
- |                               |   |
|-------------------------------|---|
| • Supply voltage              | 230 V ~ 50 Hz                                     |
| • Control system              | Wired DALI-2    Wireless IEC62386-104 over Thread |
| • Radio support               | IEEE 802.15.4                                     |
| • Frequency band              | 2.4 GHz   |
| • Max radio tx power          | +8 dBm  |
| • DALI line current           | 2 mA  |
| • Output load                 | 10 A resistive    6 A inductive                   |
| • Output type                 | Switched 240V~ active                             |
| • Max. in-rush                | 165 A 20ms    492 A 1.5ms                         |
| • Min. rated relay operations | 40 000  |
| • Contact rating              | 100mΩ max. (at 1A 6V dc)                          |
| • Max. operations per hour    | 360   |
| • Relay type                  | Non-latching normally open                        |
| • Wiring                      | 1 – 4 mm <sup>2</sup> Strip 6 – 7 mm              |
| • Operating temperature       | 0 to 55°C   |
| • Material                    | PC  |
| • Classification              | Class II  |
| • Ingress protection          | IP20  |

## Safety information

- This product must only be installed by a licensed electrician.
- Before commencing installation turn off and isolate the electrical supply.
- There are no user serviceable parts, attempting to service any part of the product will void the warranty
- DALI is not SELV and as such should be treated as LV.
- As the installer, it is your responsibility to ensure you comply to all relevant building and safety codes. Refer to application standards for the relevant rules.

## Dimensions

- |                    |  |
|--------------------|--|
| • Mounting options | Independently mounted control for surface mounting |
| • Fixing centres   | 125 mm   |
| • Dimensions       | 148 / 44.5 / 30 mm                                 |

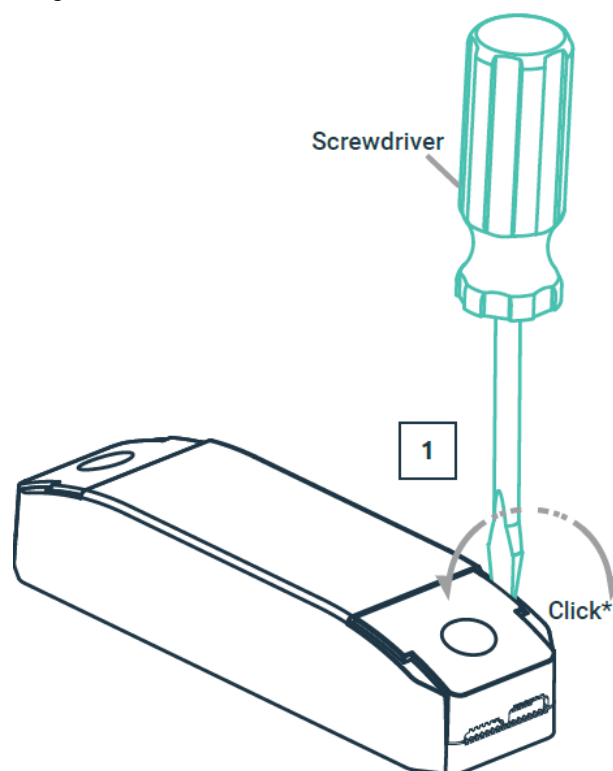


## Installation

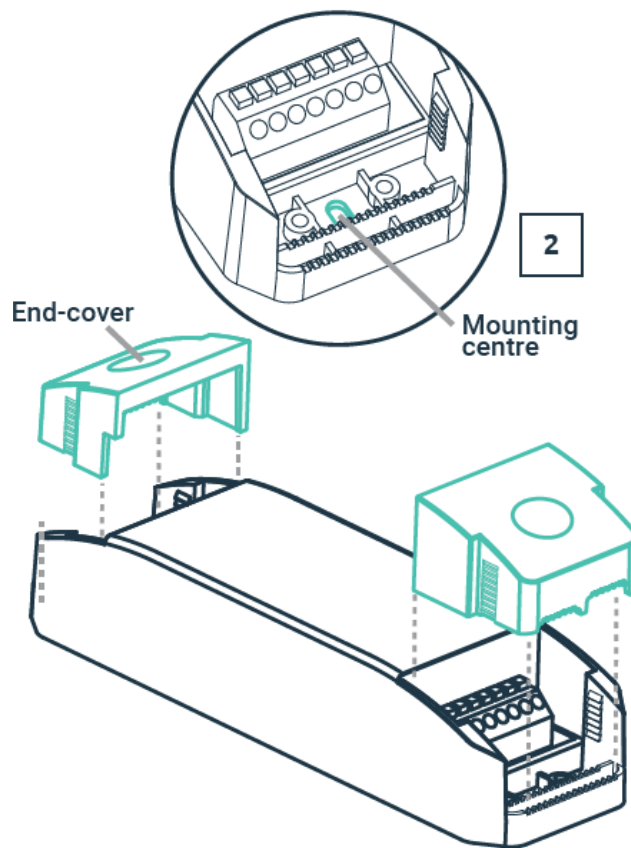
Remove the product from the box and inspect it for any damage. If you believe the product to be damaged or otherwise unsound, do not install the product. Please pack it back into its box and return it to the place of purchase for replacement.

If the product is satisfactory, proceed with the installation:

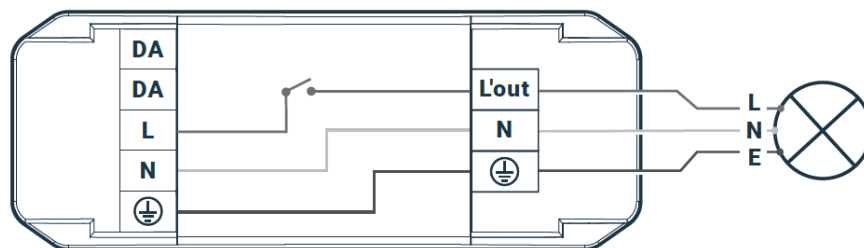
1. Ensure safety warnings are adhered to.
2. Release the two end covers using a flatblade screwdriver.



3. Mount driver,



and wire the as per the wiring diagram in

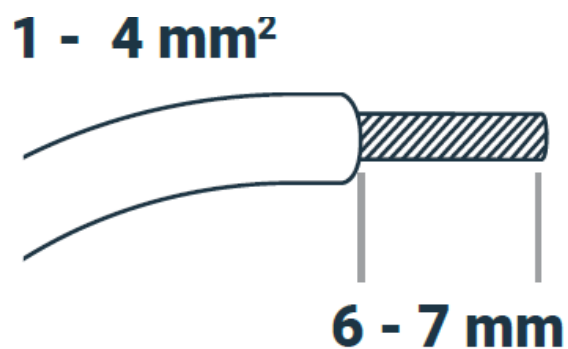


4. Replace end covers to ensure adequate strain relief.

Note relay must have an appropriate MCB to protect the load circuit.

#### Wiring diagram

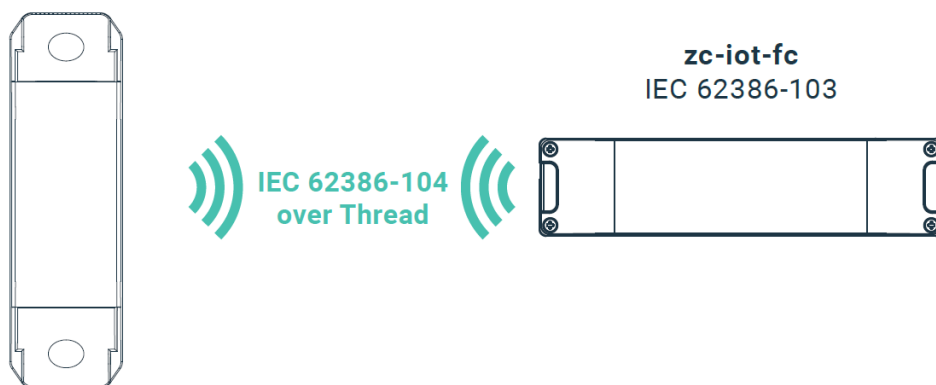
Wire preparation



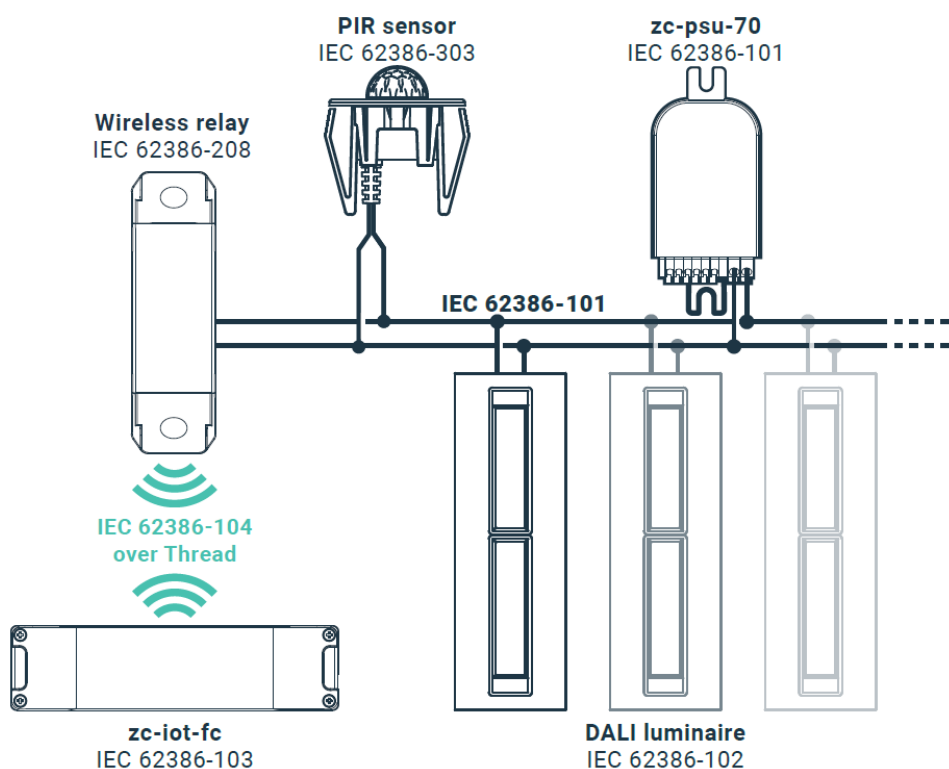
1. 104 mode is enabled after the device has been added to a 104 application controller such as zc-iot-fc.

#### Wireless relay

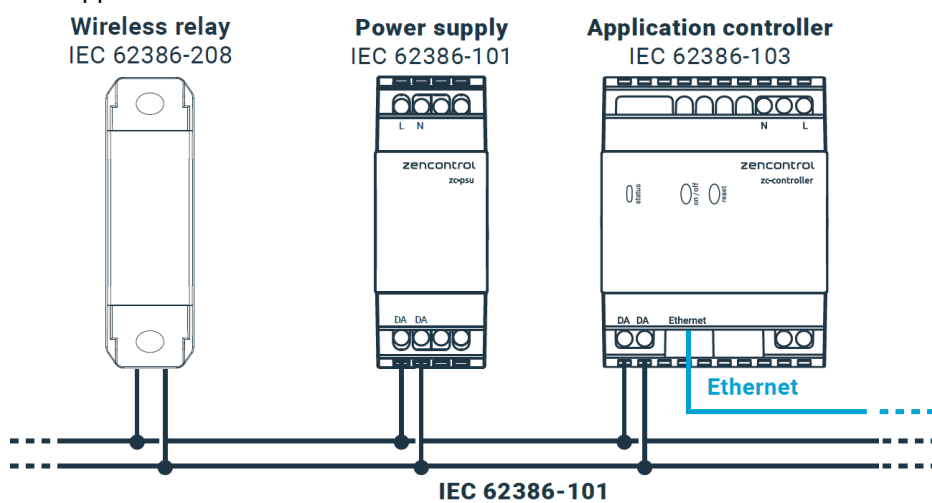
IEC 62386-208



2. 104 + 101 Bridge mode is enabled after the device has been added to a 104 controller and a 101 power supply has been connected to the DALI terminals.



3. 101 mode is enabled after a 101 power supply has been connected to the DALI terminal and the device has not been added to a 104 application controller.

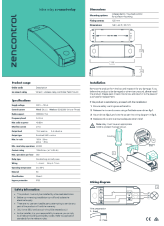


**Notice**



For more information on compliant software see our website [zencontrol.com](https://zencontrol.com)

## Documents / Resources

	<p><a href="#">zencontrol zc-smart-relay Inline Relay</a> [pdf] Instructions zc-smart-relay Inline Relay, zc-smart-relay, zc-smart-relay Relay, Inline Relay, Relay</p>
---	---

## References

- [ZEN DALI Lighting Control Experts | zencontrol](#)