

ZEMGO®
Smart Systems
ZEM-ESDB4
All Weather
Exit Button



ZEMGO Smart Systems ZEM-ESDB4 All Weather Exit Button Instruction Manual

[Home](#) » [ZEMGO Smart Systems](#) » ZEMGO Smart Systems ZEM-ESDB4 All Weather Exit Button Instruction Manual 

Contents

- [1 ZEMGO Smart Systems ZEM-ESDB4 All Weather Exit Button](#)
- [2 Product Specifications](#)
- [3 Product Usage Instructions](#)
- [4 FAQs](#)
- [5 Access Control](#)
- [6 DIMENSION](#)
- [7 Exit Button Wiring Diagram](#)
- [8 MORE INFORMATION](#)
- [9 Documents / Resources](#)
 - [9.1 References](#)
- [10 Related Posts](#)



ZEMGO Smart Systems ZEM-ESDB4 All Weather Exit Button



Product Specifications

- **Model:** ZEM-ESDB4
- **Type:** All-Weather Exit Button
- **Material:** Stainless Steel
- **Features:** LED Light, Indoor & Outdoor Use
- **Dimensions:**
 - **Front View:** 90mm x 66mm x 19mm
 - **Side View:** 40mm x 19mm x 35mm

Product Usage Instructions

Installation:

1. Identify a suitable location for mounting the exit button, ensuring it is easily accessible.
2. Use the provided wiring diagram to correctly connect the wires to the designated terminals.
3. Securely mount the exit button using appropriate screws and ensure it is firmly in place.
4. Test the functionality of the exit button to ensure proper operation.

Wiring Instructions:

Follow the wiring diagram provided:

- Green (1) & Green (2): COM
- White: NC (Normally Closed)
- Yellow: NO (Normally Open)
- Red: +12VDC
- Black: -GND

LED Light:

The LED light on the exit button indicates its power status. Ensure a DC-12V power supply for proper functioning.

FAQs

- **Q: Can the exit button be used outdoors?**
 - A: Yes, the exit button is designed for both indoor and outdoor use, thanks to its all-weather construction.
- **Q: What is the maximum load rating for the push-button dry contact?**
 - A: The push-button dry contact has a rating of 250VAC 5A. Do not exceed these ratings for safe operation.
- **Q: How do I know if the exit button is receiving power?**
 - A: The LED light on the exit button will illuminate when it is receiving power from a DC-12V source.

Access Control

All-Weather Exit Button – Sleek Compact Stainless Steel Solution with LED Light for Indoor & Outdoor

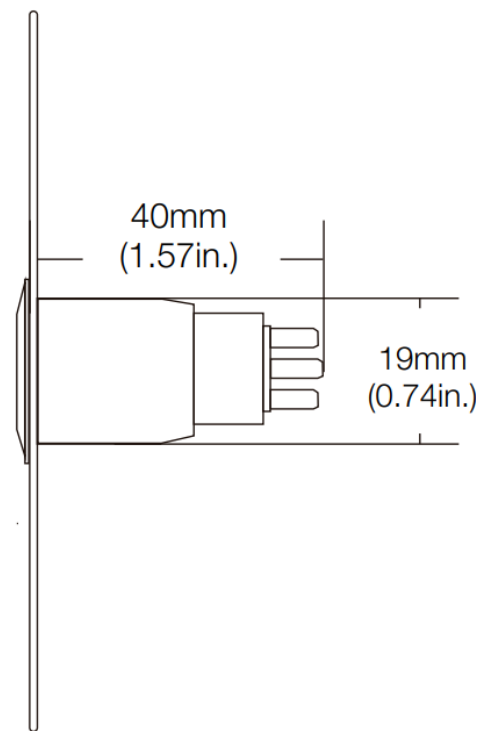
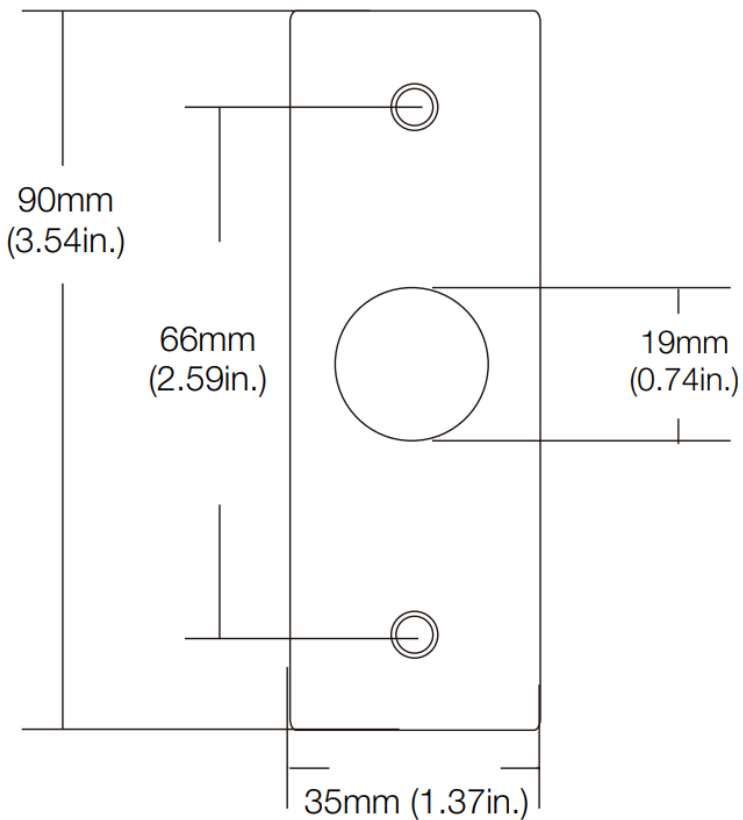


Front View



Side View

DIMENSION



Exit Button Wiring Diagram



Green (1): COM



Green (2): COM



White: NC



Yellow: NO



Red: +12VDC



Black: -GND

1. Push-button dry contact rating: 250VAC 5A. For safe operations, do not exceed the ratings above.
2. For normally open requirements, connect wires to N.O dry contact of PUSH-BUTTON.
3. For normally closed requirements, connect a wire to N.C dry contact of PUSH-BUTTON.
4. LED Supply Voltage POWER: DC-12V.

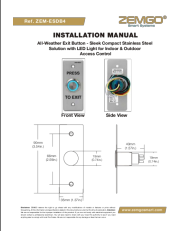
MORE INFORMATION

Disclaimer: ZEMGO reserve the right to go ahead with any modifications of models or features or price without forewarning. All the information and specifications stated in this document are current at the time of publication.

Attention: We are not responsible for the improper installation of this product. If you are not handy with electrical equipment you should contact a professional electrician. You will also need to check with your local Fire authority to see if you need anything else to comply with local Fire Codes. We are not responsible for any damage or fees that can occur.

- www.zemgosmart.com

Documents / Resources

	<p>ZEMGO Smart Systems ZEM-ESDB4 All Weather Exit Button [pdf] Instruction Manual ZEM-ESDB4, ZEM-ESDB4 All Weather Exit Button, ZEM-ESDB4, All Weather Exit Button, Weather Exit Button, Exit Button, Button</p>
---	--

References

- [🏠 Home - Zemgo Smart Systems](#)
- [User Manual](#)

Manuals+ Privacy Policy

This website is an independent publication and is neither affiliated with nor endorsed by any of the trademark owners. The "Bluetooth®" word mark and logos are registered trademarks owned by Bluetooth SIG, Inc. The "Wi-Fi®" word mark and logos are registered trademarks owned by the Wi-Fi Alliance. Any use of these marks on this website does not imply any affiliation with or endorsement.