



ZEEFO LDD-25W-C Smart Floor Lamp User Manual

[Home](#) » [ZEEFO](#) » ZEEFO LDD-25W-C Smart Floor Lamp User Manual

ZEEFO LDD-25W-C Smart Floor Lamp User Manual



Thank you for your choice. Please read the user manual carefully and keep it for future reference. Correct installation is required, please follow the instructions step by step. After installation, this smart floor lamp can be controlled by APP or touch-sensitive button on the lamp.

Contents [[hide](#)

- [1 Specification](#)
- [2 Before Assembly](#)
- [3 Assembly Instruction](#)
- [4 Download the App](#)
- [5 Pair the smart flood lamp to " Smart Life" App](#)
- [6 How to control the light with Amazon Alexa?](#)
- [7 How to control the light with Google Assistant?](#)
- [8 Key Function](#)
- [9 WARNING](#)
- [10 Documents / Resources](#)
- [11 Related Posts](#)

Specification

Model	LDD-25W-C / LDD-25W-D
Wattage	25W
Dimension	Ø 0.82 x 5.51inch/22x1680mm
Input Voltage	100-240V AC ,50/60Hz
Color Temperature	2700K-6500K
Max Luminous Flus	MAX. 2000 lm
Beam Angle	160 deg
Protection Rating	I P20
Controlled By	Voice/ APP/ Touch
Color	2700K-6500K White+ RGB
Material	Plastic; Cast iron hardware

Before Assembly

1. Inspect lamp before beginning assembly. Wire connections have been made at the factory and the lamp is ready for assembly.
2. Remove all packing materials from the lamp.
3. To prevent bad connections, avoid pulling wiring connections when re-moving contents from package or during installation.
4. Lay out all the parts on a flat surface.
5. The floor lamp consists of seven parts: 1 x Lamp Head, 4 x Pole, 1 x Lamp Base, 1 x Electric Wire with Adapter (Refer to illustration).

Assembly Instruction

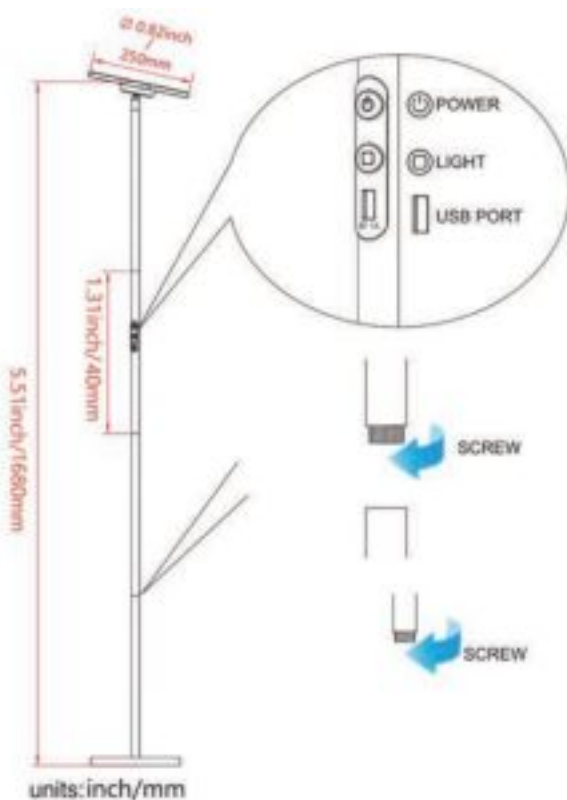
1. Place the lamp base on flat surface then screw each two parts clock-wise in order.

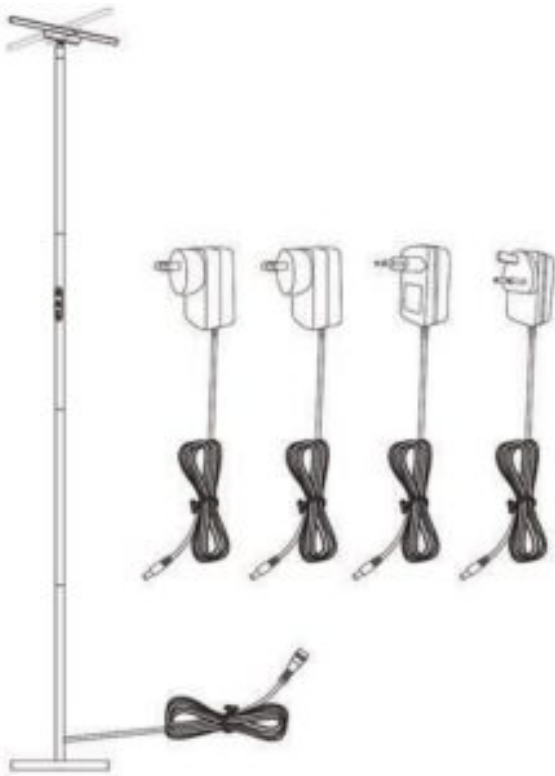
Note:

- Please take care not to pinch or damage the wires.
 - For better installation, please tighten the bottom pole and lamp base firstly.
 - Make sure each section of tubes are tightened.
2. Plug adapter into outlet and now the lamp is ready for use.

Adjustment

For best performance, please adjust the lamp position to directly above your area of reading/working.





Download the App

- **Step A:** Smart Life app installation Please choose either way below to download and install the app.

1. As per your phone system, choose the QR code to scan.

iOS



Android



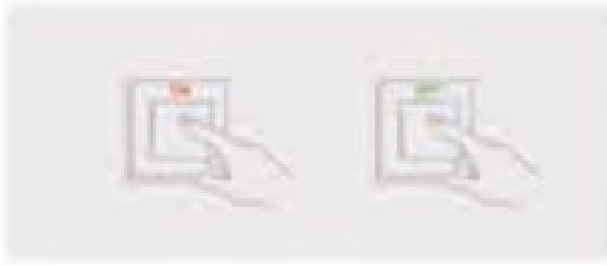
2. Search keyword 'Smart Life' in Apple Store or Google Play.

- **Step B:** Create an account on Smart Life and login. Note: Please keep your account and password in mind for Alexa or Google Assistant App pairing later.

Pair the smart flood lamp to " Smart Life" App

1. TURN INTO PAIRING MODE (2 options)

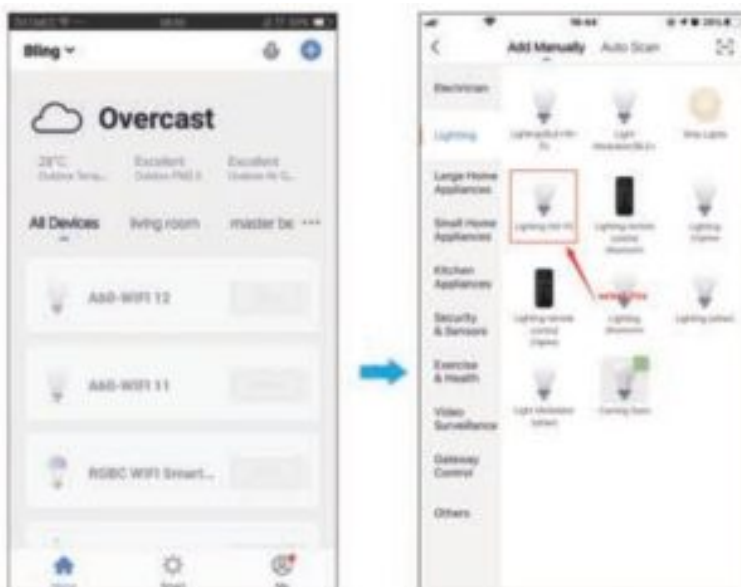
- Short touch the Power button 6times(ON/OFF/ON/OFF/ON/OFF), the lamp will flash rapidly and then flash slowly 3times

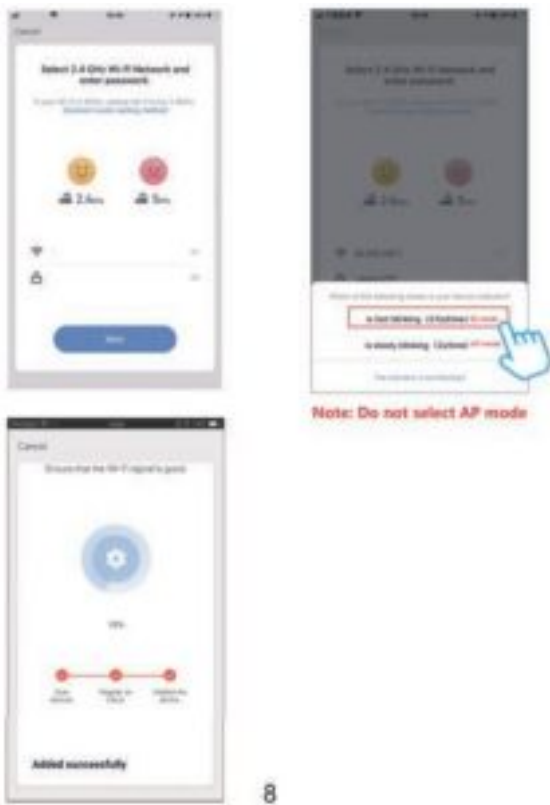


- Long touch the Power button for 5 seconds the lamp will flash rapidly and then flash slowly 3times.



NOTES: the lamp will automatically drop out pairing mode if no any mobile devices connect-ed within 5minutes.

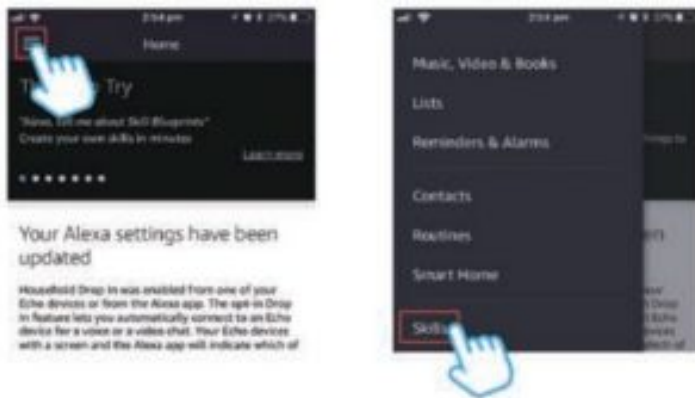




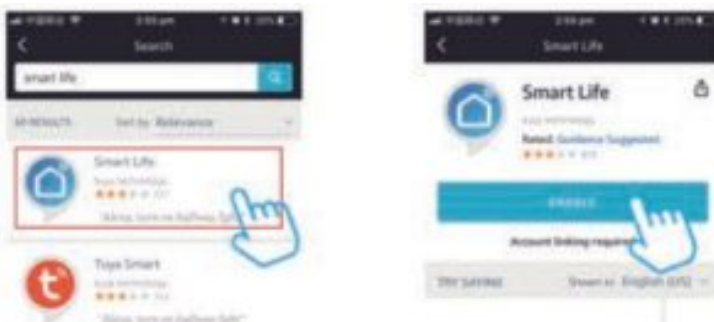
How to control the light with Amazon Alexa?

Please make sure that your Alexa app is connected to Echo, and both work well under your WiFi network.

- **Step A :** Log in your Alexa App, tap top left corner, and tap 'skills'



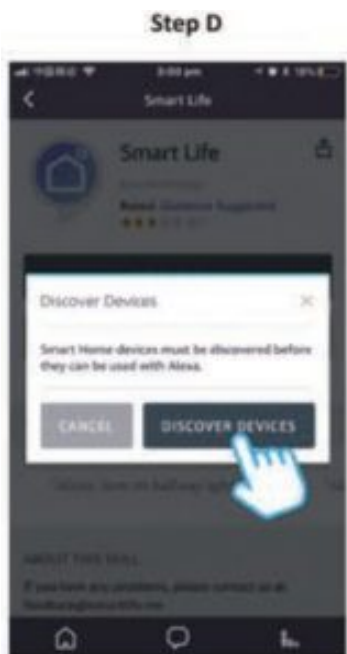
- **Step B :** Type 'Smart Life', find 'Smart Life' from the search result and tap it to enable the skill.



- **Step C :** Enter your Smart Life App account and password. Tap 'Link Now', then tap 'Authorize' on the next page to bind Smart Life account to Alexa.



- **Step D** : When your Smart Life account is bound to Alexa, tap '**DISCOVER DEVICES**' to detect the light.



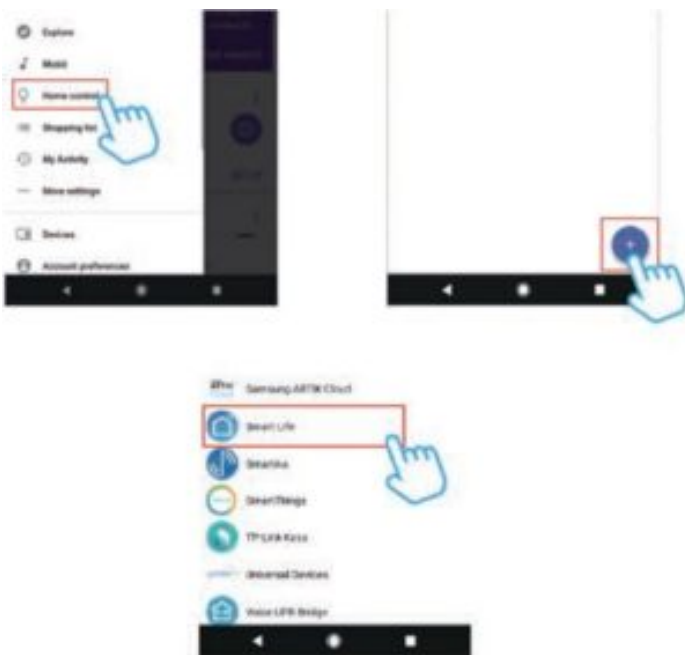
- **Step E** : When the named light is paired to Alexa from Smart Life, it will show on the device page (see the 'smart light' example).
- **Step F** : Now you can control the light with Alexa App on the setting page. To turn on or off the light, simply tap the bulb icon.
- **Step G** : You can also voice control the light with Alexa by giving these com-mands: "Alexa, turn on 'device name' ", "Alexa, set 'device name' to 'color' ", "Alexa, set 'device name' to 'number' ". Device name is the one you give to the light. The light is named 'smart light' in this user guide. For example, "Alexa, turn on 'smart light' ", "Alexa, set 'smart light' to 'blue' " etc.



Note: To control the light with Google Assistant, please continue to read Part Four.

How to control the light with Google Assistant?

- **Step A :** Login Google Assistant App, tap 'Home Control' on the left side bar page.
- **Step B :** Tap '+' button on the bottom right to enter next page.
- **Step C:** Find 'Smart Life' from side bar list.



- **Step D :** Enter your Smart Life App account and password to bind Smart Life account to Google Assistant.



- **Step E :** You will find the named light shows on the Home Control page. Now you can control the light on Google Assistant App, or voice control it by giving these commands: “ok Google, turn on ‘device name’ “, “ok Google, set ‘device name’ to ‘color’ “, “ok Google, set ‘device name’ to ‘number’ “.



Device name is the one you give to the light. The light is named ‘smart light’ in this user guide. For example, “ok Google, turn on ‘smart light’ “, “ok Google, set ‘smart light’ to ‘blue’ ” etc.

Key Function



Power button

1. Short touch: Power ON or OFF
2. Long touch' Pairing.



Light button

1. Short touch to switch color
2. long touch to dim brightness











1	while	50%	long press Is to adjust the brightness
2	warm	50%	
3	blue	50%	
4	green	50%	
5	red	50%	
8	pink	50%	
7	orange	50%	
8	purple	50%	
9	party	50%	
10	fade	50%	

SV/1A provided by USB

- Do not exceed the Max. output 5V/1A, or « will cause the buttons out of work.



WARNING

-  Cut off the power before installation
-  Keep it away from flammables and fire source.
-  Replacing and clean to avoid electricity touched.
-  Lamp is operated in dimming circuit.
-  Keep it away from water.
-  Assemble the lamp according to the instructions and do not rebuild.
-  Do not stare at the lamp for a long time.
-  Assemble, take apart or move the lamp gently.
-  Please do not cover anything on the lamp head and avoid bending and bumping the lamp pole.
-  Keep it away from children.

Documents / Resources

	ZEEFO LDD-25W-C Smart Floor Lamp [pdf] User Manual LDD-25W-C, LDD-25W-D, Smart Floor Lamp
---	--