



## ZEBRONICS ZEB-FIT9220CH DRIP Smart Watch with Calling Function User Manual

[Home](#) » [ZEBRONICS](#) » ZEBRONICS ZEB-FIT9220CH DRIP Smart Watch with Calling Function User Manual

### Contents [ [hide](#) ]

- [1 ZEBRONICS ZEB-FIT9220CH DRIP Smart Watch with Calling Function](#)
- [2 Disclaimer](#)
- [3 Features](#)
- [4 Specification](#)
- [5 Package Contents](#)
- [6 Product Representation](#)
- [7 Charging process](#)
- [8 Power-on](#)
- [9 Usage instructions](#)
- [10 Documents / Resources](#)
- [11 Related Posts](#)

# ZEBRONICS

**ZEBRONICS ZEB-FIT9220CH DRIP Smart Watch with Calling Function**



**Dear Customer,** Thank you for purchasing DRIP Smart Watch. Please read this user manual carefully before operating & save this user manual for further reference.

### **Disclaimer**

This product should not be used for medical purposes, though it may monitor the BP, SpO2, and Heart rate.

### **Features**

- Heart Rate, SpO2 & BP monitor
- Step/Calorie/Distance
- Sleep Monitor
- Color Display
- Customizable Watch Face
- Calling Function (Via BT)
- Call, SMS, and Third-party App Message Notification
- Wrist Sense
- 100+ Sport Modes
- Weather Forecast
- Stopwatch | Countdown
- IP67 Water Proof
- Camera & Music Control

- Call Reject
- Brightness Adjustment
- Water Reminder
- Quick Access
- Menstrual Tracker
- 8 Menu UI
- Meditative Breathing
- 5 days of data storage

## Specification

- **Support:** ios 9.0 & Above Android S.0& Above
- **Vibration:** Yes
- **Water-Resistant:** Ip67
- **Screen Size & Type:** 4.29cm, TFT Color display
- **Bluetooth:** vS.1+va.0
- **Control:** Capacitive touch screen and 1 button on the Right side
- **Data Storage:** 5 Days
- **Battery:** 250mAh. Built-in rechargeable
- **Standby Time:** 30 days
- **Charge Time:** 1.5-2.5 h
- **Product Dimension Core (Wx DxH):** 44 x 36x 11 mm
- **Net Weight:** 45g

## Package Contents

- **Smart Watch:** 1 U
- **Charging Cable:** 1 U
- **QR Code Guide:** 1 U

## Product Representation



## Charging process

Use an SV DC power adapter to charge the DRIP (ZEB-FIT9220CH) smartwatch with the charging cable provided inside the package. Kindly ensure to charge the device fully before using it for the first time. The smart fitness watch powers ON once plugged to the charger or it can be manually powered ON by pressing the button for few seconds.

## Power-on

Press and hold the power button to ON/OFF the smartwatch.

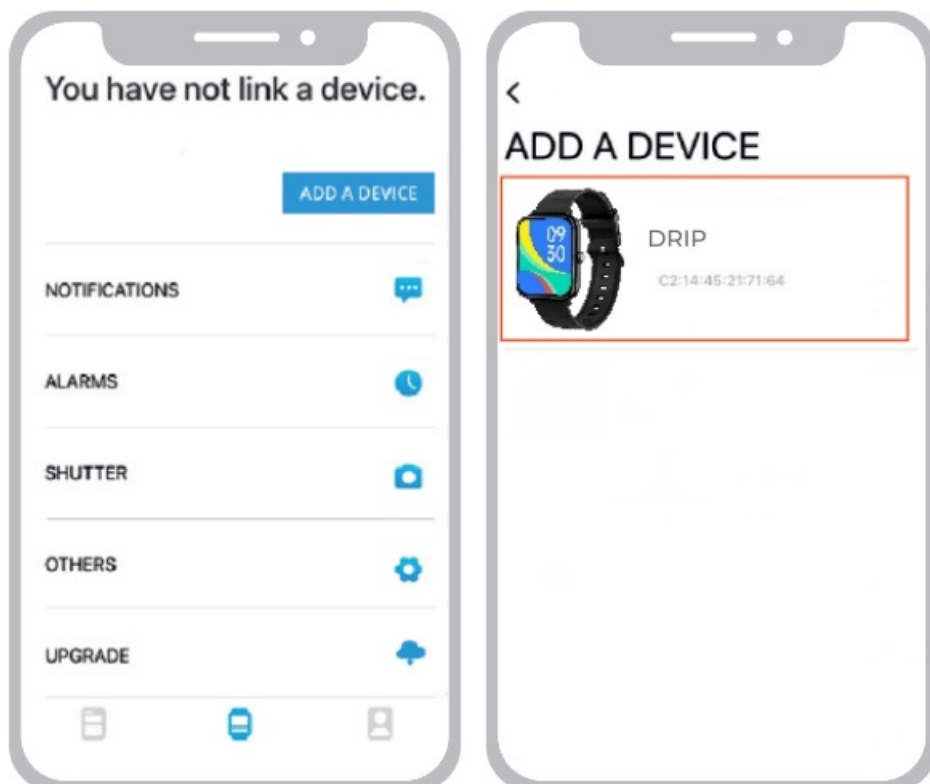
## Usage instructions

- **installing ZEB-FIT 20 SERIES app**

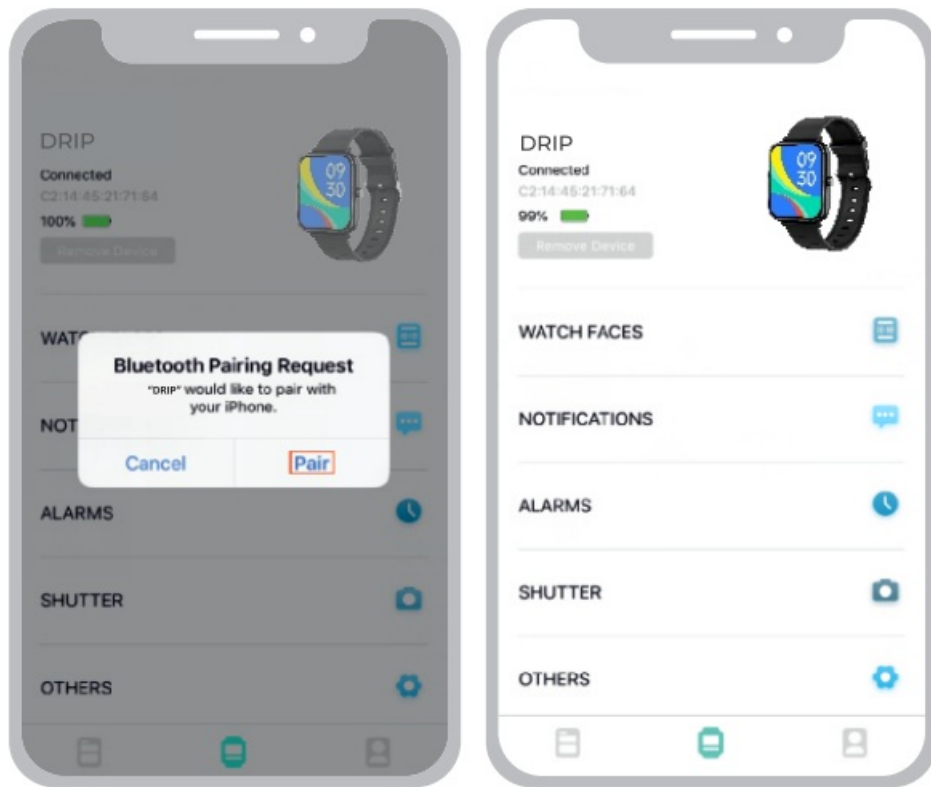
Download the app by scanning the QR code or searching for the name ZEB- FIT20SERIES in the play store/app store. Once installed, follow the steps directed by the app interface. **Note:** Your device must support Android 5.0 | iOS 9.0 (or above) and BTversion4.0(or above).

- **Connecting DRIP (ZEB-FIT9220CH) smartwatch to the app**

Click on the 'Add device' option on the ZEB-FIT 20 SERIES app home page.

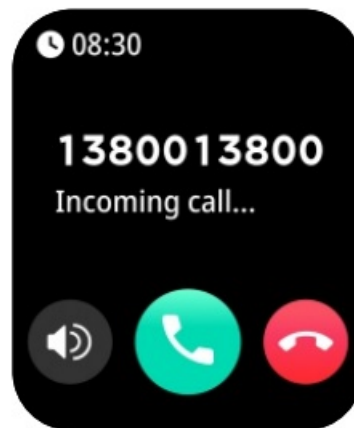
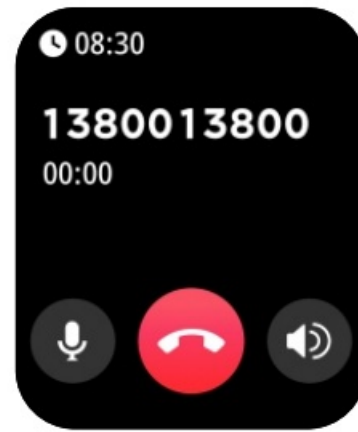


Select the device name DRIP from the scanned name list. While pairing, iOS devices display a BT pairing requested which must be given 'Pair' to confirm and proceed. Android devices get connected directly. Connection is successful.



- **Call function (via BT) – connection and usage**

Enable the secondary BT from the watch settings BT: OFF> BT: ON Now open your smartphone's BT menu and scan for nearby devices. Connect to the device name DRIP (these steps apply for both Android and iOS smartphones) Once connected, you can now use the watch dialer option and voice call function (via BT)



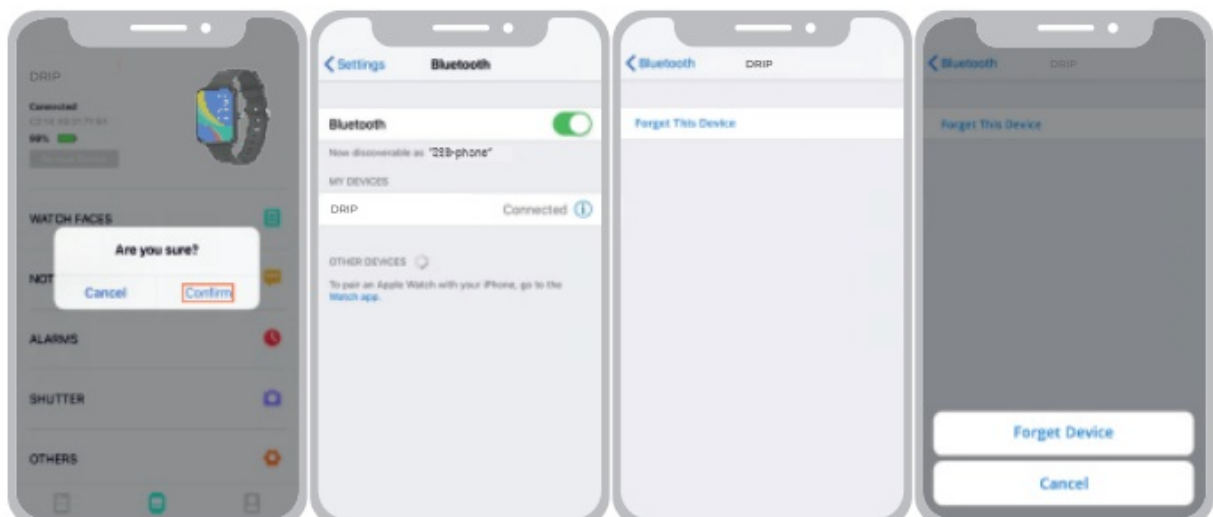
- **Display and interface of DRIP (ZEBFIT9220CH) smartwatch**

Once the device is powered ON and connected to the smartphone, the following are the display interface images that can be seen in DRIP(ZEB-FIT9220CH)smartwatch.




## • Disconnecting process

For Android-based smartphones, the fitness watch can be disconnected directly from the ZEB – FIT 20 SERIES app interface by simply clicking on the option as shown in the below image. For iOS devices, once the above step is done, kindly ensure the fitness watch name is disconnected from the BT menu of the iOS device, as shown below.



**Note:** Do not use the fitness watch in the water with temperatures above 42°C. For any repairs please take the

Documents / Resources

	<p><a href="#">ZEBRONICS ZEB-FIT9220CH DRIP Smart Watch with Calling Function</a> [pdf] User Manual ZEB-FIT9220CH, DRIP Smart Watch with Calling Function, ZEB-FIT9220CH DRIP Smart Watch with Calling Function</p>
---	---