



ZEBRONICS ETERNAL Smart Watch with BT Calling User Manual

[Home](#) » [ZEBRONICS](#) » ZEBRONICS ETERNAL Smart Watch with BT Calling User Manual 

Contents

- [1 zebronics ETERNAL Smart Watch with BT Calling](#)
- [2 Features](#)
- [3 Specification](#)
- [4 Package Contents](#)
- [5 Product Representation](#)
- [6 Charging process](#)
- [7 Documents / Resources](#)
- [8 Related Posts](#)



zebronics ETERNAL Smart Watch with BT Calling



Dear Customer,

Thank you for purchasing ETERNAL Smart Watch. Please read this user manual carefully before operation & save this user manual for further reference.

Disclaimer

This product should not be used for medical purpose, though it may monitor the BP, SpO2, Heart rate.

Features

- Heart Rate , SpO2 & BP monitor Step/Calorie/Distance
- Sleep Monitor
- Large Square Touch Display Customizable Watch face
- Calling Function (Via BT)
- Call, SMS and third party app message notification
- Camera & Music Control
- Wrist sense
- 100+ Sport Modes
- Weather forecast
- Stopwatch | Countdown
- IP67 WaterProof
- Call Reject
- Brightness Adjustment
- Water reminder
- Quick Access

- Menstrual Tracker
- 8 Menu UI
- Meditative Breathing
- 7 days data storage

Specification

- **Support:** iOS 9.0 & Above | Android 5.0 & Above*
- **Vibration:** Yes
- **Water Resistant:** Ip67
- **Screen Size & Type :** 4.69cm(1.85 in),TFT color display
- **Bluetooth:** vs.a+ v3.0
- **Control:** Capacitive touch screen & 1 button on the Right side
- **Data Storage:** 7 Days
- **Battery:** 250mAh, Built-in rechargeable
- **Standby Time:** 30 days
- **Charging Time:** 2h
- **Strap:** Silicone/Metal Strap
- Product Dimension
 - **Core (WxDxH):**45.5x38x11mm
 - Strap (L X B)
- **Long strap :** 132 x 22 mm
- **Short strap :** 90 x 22 mm
- **Net Weight:** 45g

Package Contents

- **Smart Watch:** 1 U
- **Charging Cable:** 1 U
- **QR code guide:** 1 U

Product Representation



Charging process

Use an SV DC power adapter to charge the

ETERNAL (ZEB-FITS80CH) smart watch with the charging cable provided inside the package. Kindly ensure to charge the device fully before using it for the first time. The smart fitness watch powers ON once plugged into the charger or it can be manually powered ON by pressing the button for a few seconds.

Power-on

Press and hold the power button to ON/OFF the smart watch.

Usage instructions:

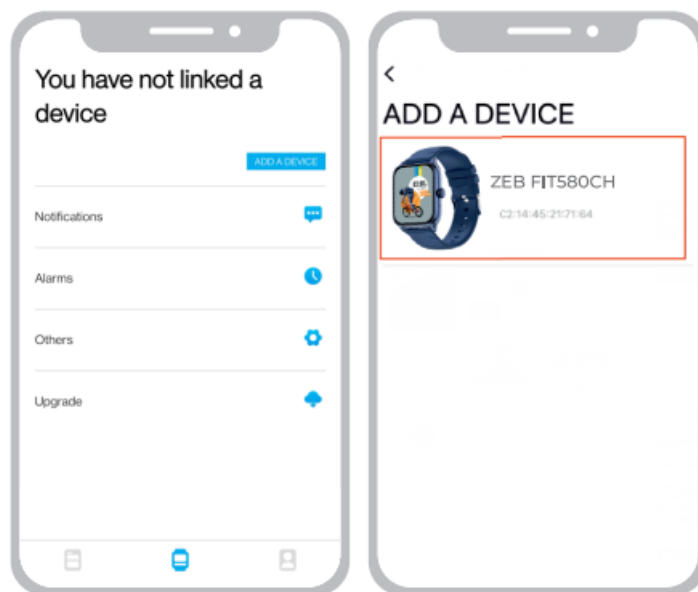
Installing ZEB-FIT20SERIESapp:

Download the app by scanning the QR code or search for the name ZEB- FIT 20 SERIES in the play store I app store. Once installed, follow the steps directed by the app interface.

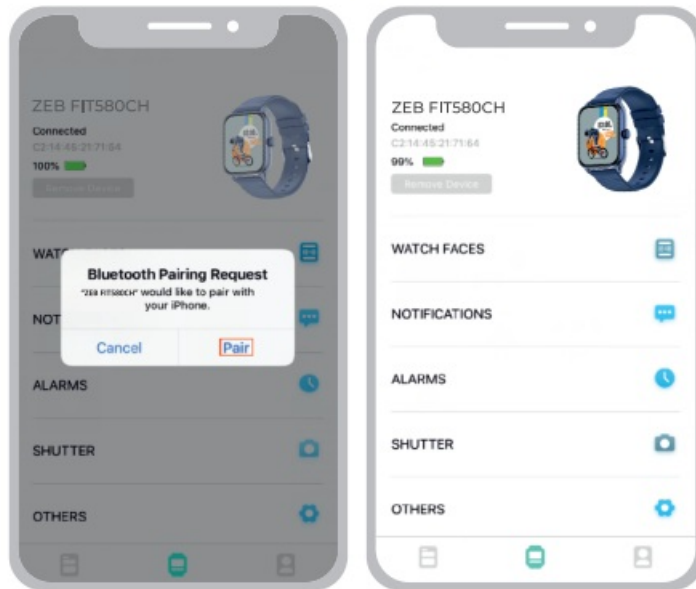
Note: Your device must support Android 5.0 I iOS 9.0 (or above)* and BT version 4.0 (or above).

Connecting (ZEB FITS80CH) smartwatch to the app:

- Click on the 'Add device' option on the ZEB-FIT 20 SERIESapp home page.
- Select the device name ZEB FITS80CH from the scanned name list.

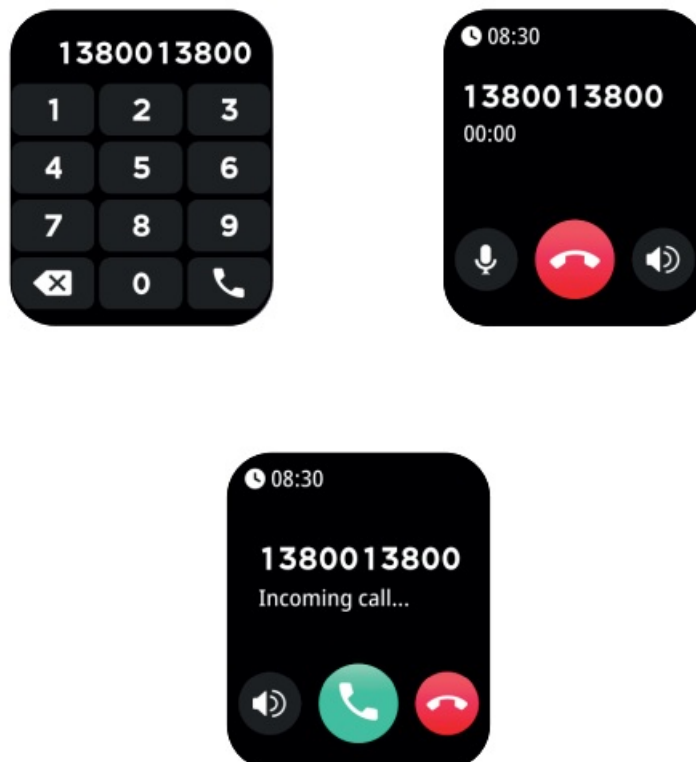


- While pairing, iOS devices display a BT pairing request which must be given 'Pair' to confirm and proceed. Android devices get connected directly.
- A connection was successful.



Call function (via BT) – connection and usage:

- Enable the secondary BT from the watch settings BT: OFF> BT: ON
- Now open your smartphone's BT menu and scan for nearby devices.
- Connect to the device name ZEB FITSSOCH-XXXX (these steps apply for both Android and iOS smartphones)
- Once connected, you can now use the watch dialer option and voice call function (via BT)



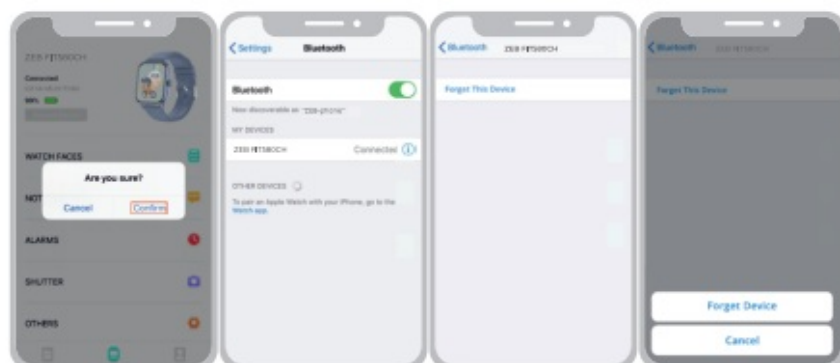
Display and interface of ETERNAL (ZEBFIT580CH) smartwatch:

Once the device is powered ON and connected to the smartphone, the following are the display interface images that can be seen in the ETERNAL (ZEB-FIT580CH) smartwatch.



Disconnecting process:


For Android-based smartphones, the fitness watch can be disconnected directly from the ZEB – FIT 20 SERIES app interface by simply clicking on the option as shown in the below image. For iOS devices, once the above step is done, kindly ensure the fitness watch name is disconnected from the BT menu of the iOS device, as shown below.



Note: Do not use the fitness watch in the water with temperatures above 42°C. For any repairs please take the fitness watch to the authorized service center.

- <https://lzebronic.com/pages/service-centers>
- ISO 9001:2015 Certified Company
- www.zebronic.com

Documents / Resources

	<p>ZEBRONICS ETERNAL Smart Watch with BT Calling [pdf] User Manual</p> <p>ETERNAL Smart Watch with BT Calling, ETERNAL, Smart Watch with BT Calling, Smart Watch, BT Calling, BT Calling Smart Watch, Watch, Watch with Bluetooth Calling</p>
---	---