

 **ZEBRA**
**TC58e Mobile
Computer**



Zebra TC58e Mobile Computer User Manual

[Home](#) » [ZEBRA](#) » Zebra TC58e Mobile Computer User Manual 

Contents

- [1 Zebra TC58e Mobile Computer User Manual](#)
- [2 Installation](#)
- [3 References](#)



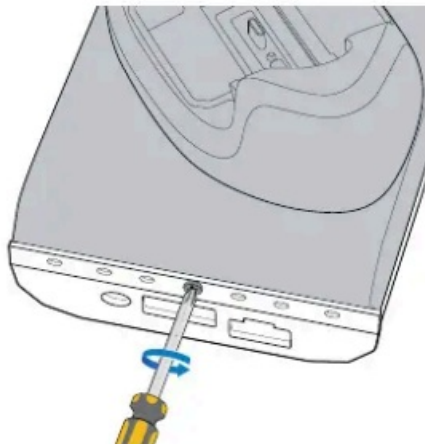
Zebra TC58e Mobile Computer User Manual



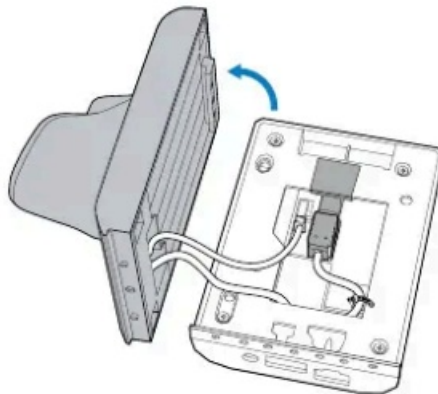
This procedure provides instructions for replacing a TC58e custom cup, involving the removal of the old cradle, swapping cables, and securing the new cup.

Installation

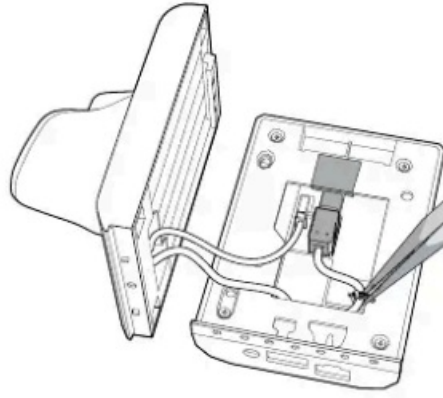
1. Unscrew the old cradle cup from its base using a Philips (PH02) screwdriver.



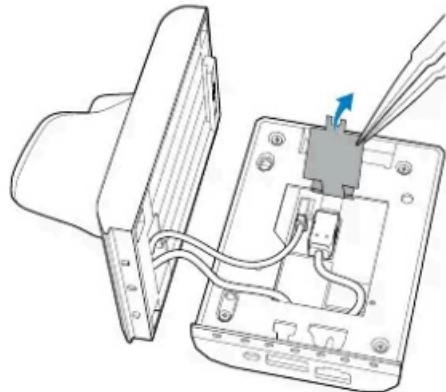
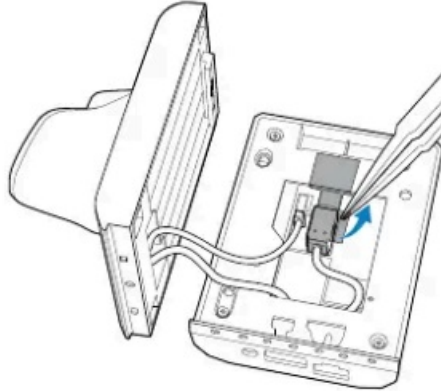
2. Lift the cup to access the inside of the cradle base.



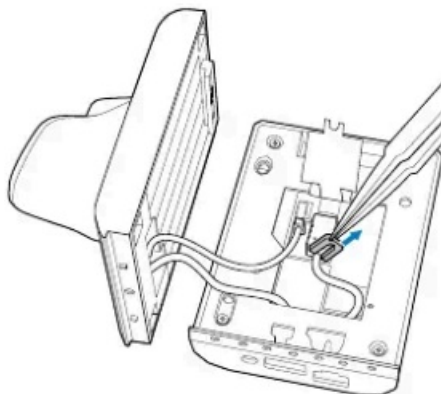
3. Using scissors, cut the cable tie and release the cable



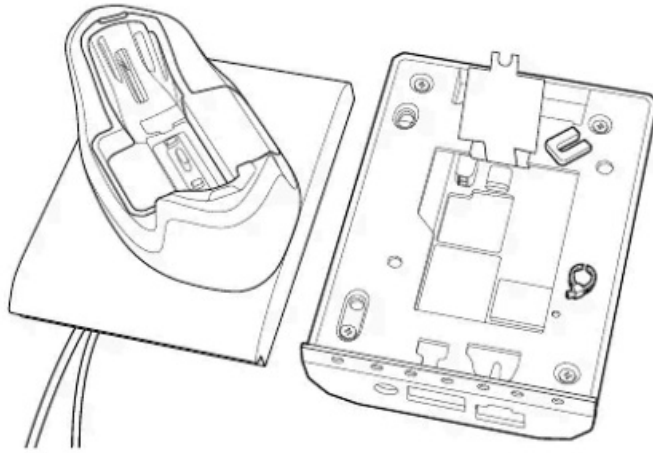
4. Using tweezers, lift the sticker on top of the cable connector.



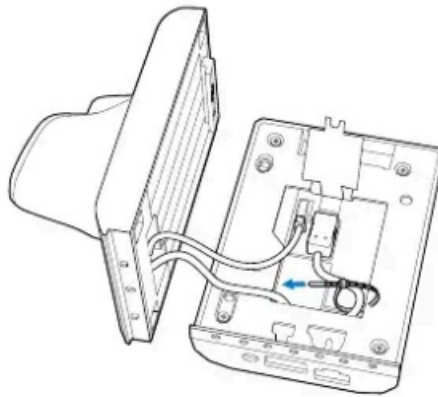
5. Remove the plastic bezel.



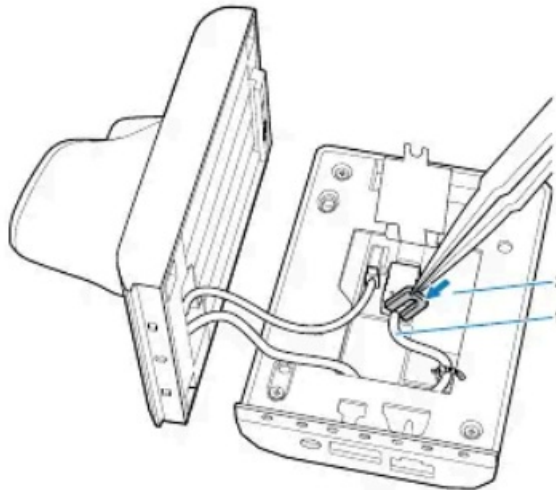
6. Disconnect the USB cable and power cable.



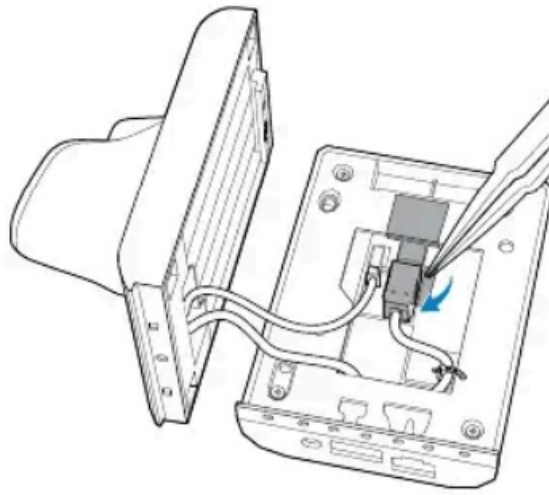
7. Connect the new USB cable to the connector on the base. Secure the cable to the base with a new cable tie and position it under the middle frame. Connect the power cable to the connector on the base.



8. Position the plastic bezel between the cable (1) and the PCB (2).

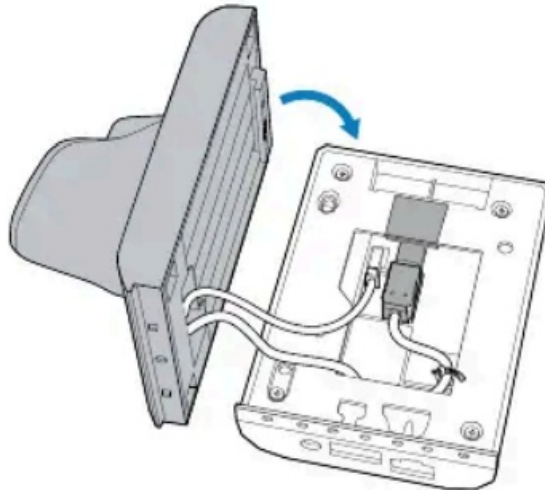


9. Reapply the sticker, ensuring it holds the new cable jack and plastic bezel in place.

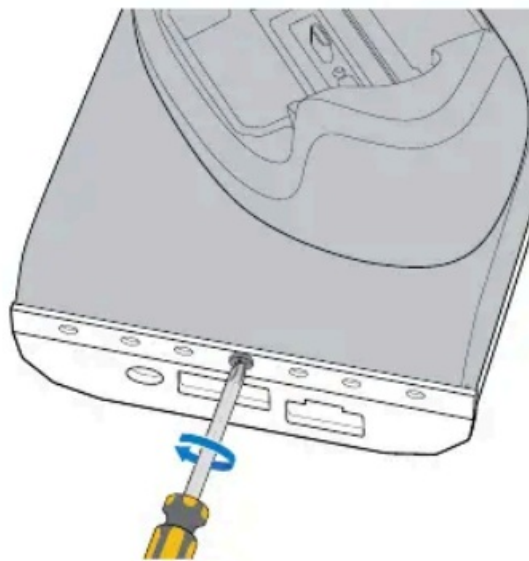


CAUTION: The same tape can be reused once or twice. Eventually, it will lose its adhesive properties.

10. Position the new cup on top of the base.



11. Secure the cup using a Philips (PH02) screwdriver. Torque to 2.55–3.45 kgf-cm (2.21–2.99 lbf-in).



The installation is complete.

Download PDF: [Zebra TC58e Mobile Computer User Manual](#)

References

- [User Manual](#)

[Manuals+](#), [Privacy Policy](#)

This website is an independent publication and is neither affiliated with nor endorsed by any of the trademark owners. The "Bluetooth®" word mark and logos are registered trademarks owned by Bluetooth SIG, Inc. The "Wi-Fi®" word mark and logos are registered trademarks owned by the Wi-Fi Alliance. Any use of these marks on this website does not imply any affiliation with or endorsement.