



Zebra DS9208 Barcode Scanner User Guide

[Home](#) » [ZEBRA](#) » Zebra DS9208 Barcode Scanner User Guide 

Contents

- [1 Zebra DS9208 Barcode Scanner User Guide](#)
- [2 CORD ATTACHMENT](#)
- [3 WALL MOUNTING](#)
- [4 TABLE TOP MOUNTING](#)
- [5 HOST INTERFACES](#)
- [6 TROUBLESHOOTING](#)
- [7 DS9208 PROGRAMMING BAR CODES](#)
- [8 OPTIMUM SCANNING](#)
- [9 Ergonomic Recommendations](#)
- [10 References](#)

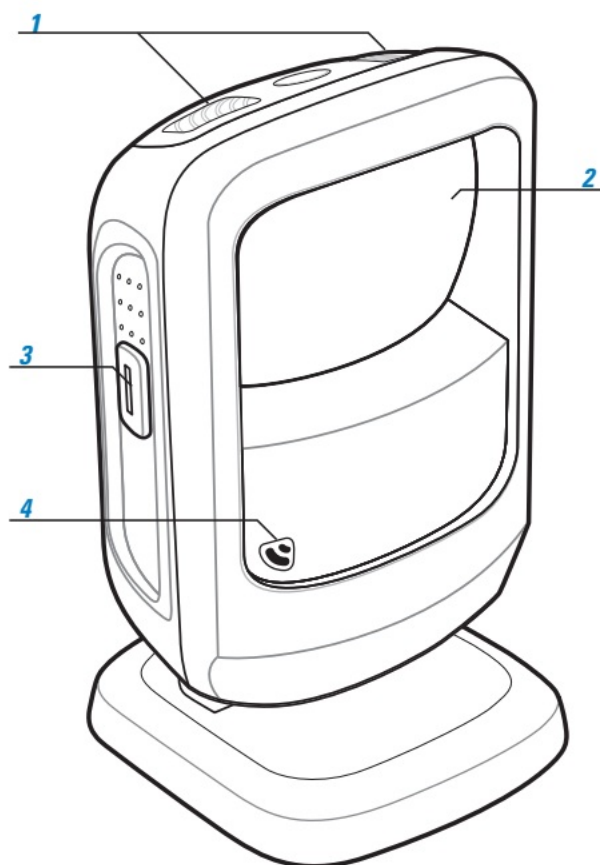


Zebra DS9208 Barcode Scanner User Guide



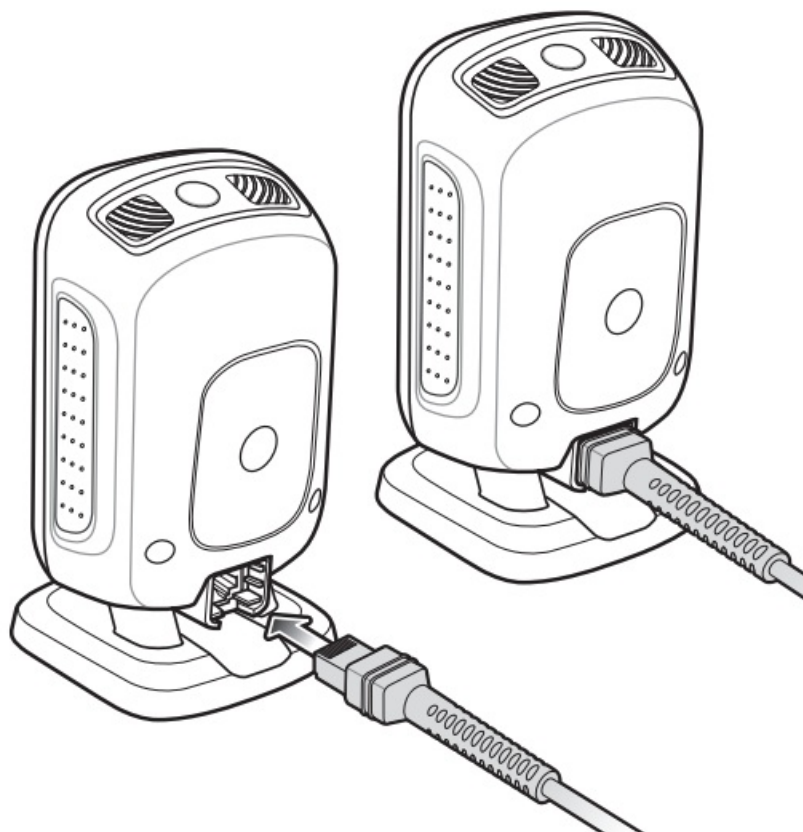
<http://www.zebra.com/ds9208>

See Product Reference Guide for detailed information.



1. LED Indicators
2. Scan Window
3. Scan Trigger
4. Beeper

CORD ATTACHMENT



WALL MOUNTING

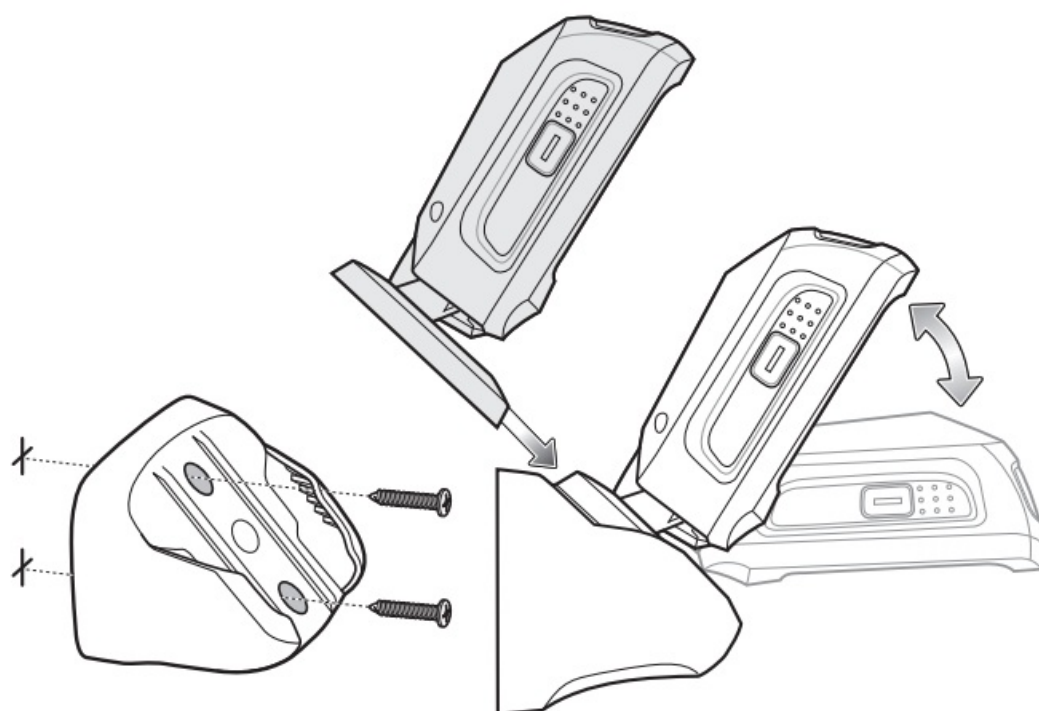
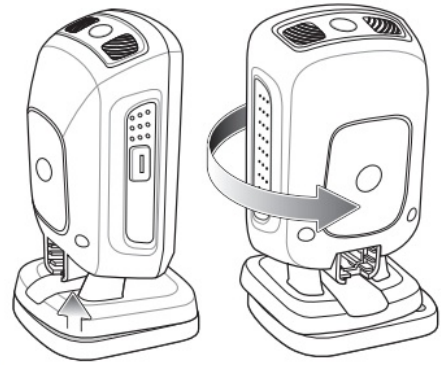


TABLE TOP MOUNTING

Inserting Scanner

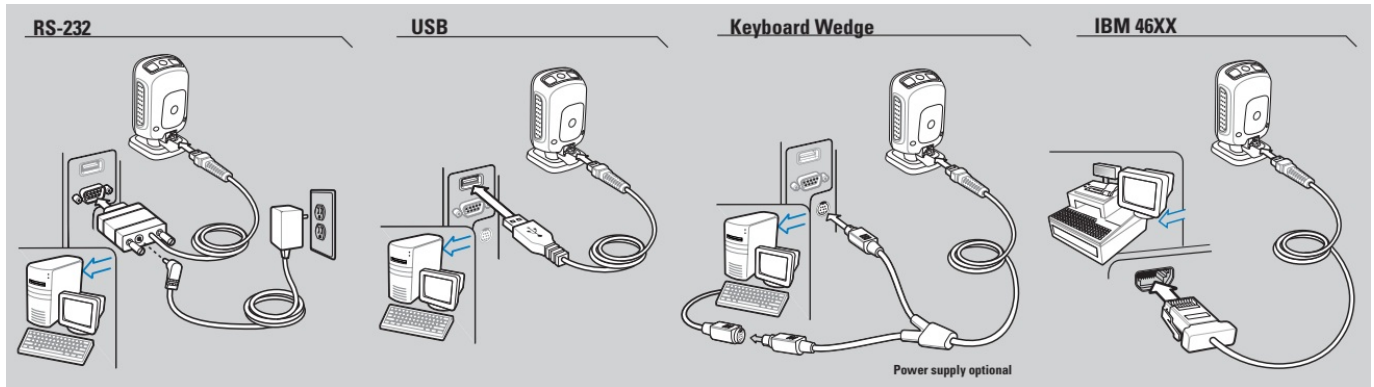


Removing Scanner



HOST INTERFACES

NOTE: Cables may vary depending on configuration.



TROUBLESHOOTING

- Scanner not working

No power to scanner

Check system power; ensure power supply, if required, is connected

Incorrect interface cable used

Ensure that correct interface cable is used

Interface/power cables are loose

Ensure all cable connections are secure

- Scanner decoding bar code, but data not transmitting to host

Scanner not programmed for correct host interface

Scan appropriate host parameter bar codes

Interface cable is loose

Ensure all cable connections are secure

- Scanner not decoding bar code

Scanner not programmed for bar code type

Ensure scanner is programmed to read type of bar code being scanned

Bar code unreadable

Ensure bar code is not defaced; try scanning test bar code of same bar code type
Ensure bar code is not defaced; try scanning test bar code of same bar code type

Distance between scanner and bar code incorrect

Move scanner closer to or further from bar code

- Scanned data incorrectly displayed on the host

Scanner not programmed for correct host interface

Scan appropriate host parameter bar codes

DS9208 PROGRAMMING BAR CODES

- Set Defaults



SET DEFAULTS



<DATA><SUFFIX 1>

- Enter Key (Carriage Return/Line Feed)



PORT 5B



PORT 9B

- IBM 46XX Host Types



HID KEYBOARD EMULATION



SNAPI WITH IMAGING



IBM HAND-HELD USB



SNAPI WITHOUT IMAGING

- USB Host Types



IBM PC/AT and IBM PC COMPATIBLE



PORT 17

- Keyboard Wedge Host Types



STANDARD RS-232



NIXDORF RS-232 MODE B



ICL RS-232



FUJITSU RS-232



NIXDORF RS-232 MODE A



OPOS/JPOS

- Scan ONE of the following country types



NORTH AMERICAN



ITALIAN



FRENCH



SWEDISH



FRENCH CANADIAN



UK ENGLISH



GERMAN



JAPANESE

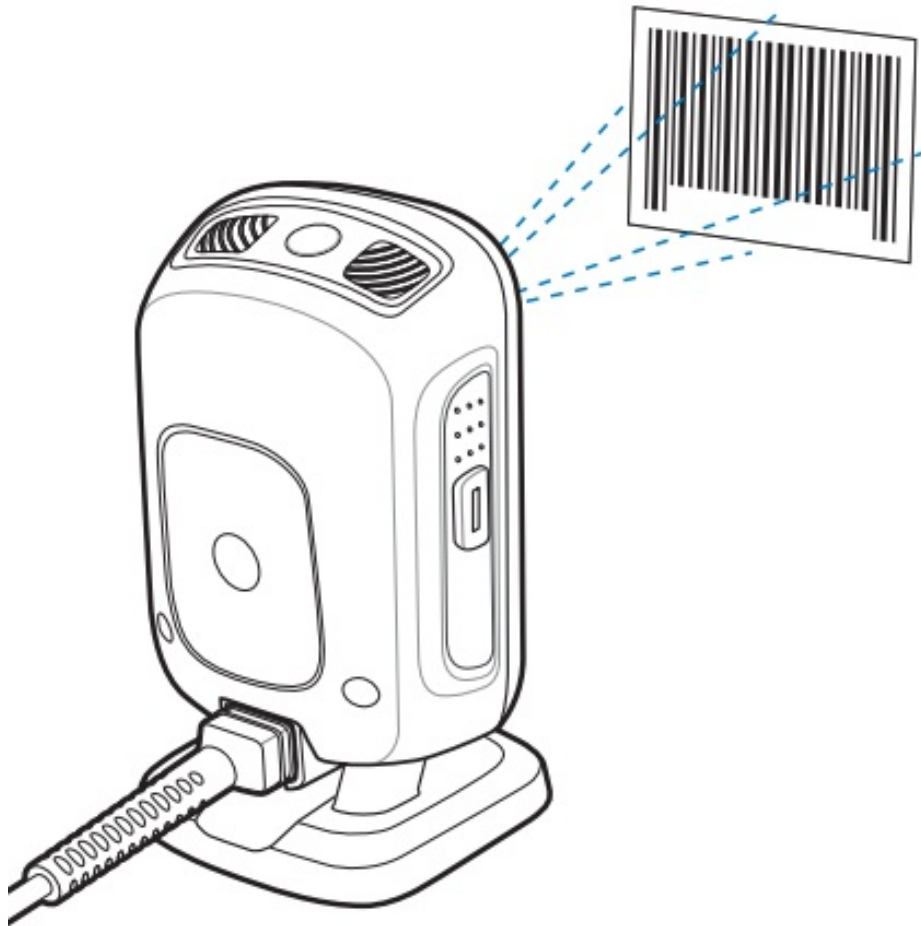
- RS-232 Host Types



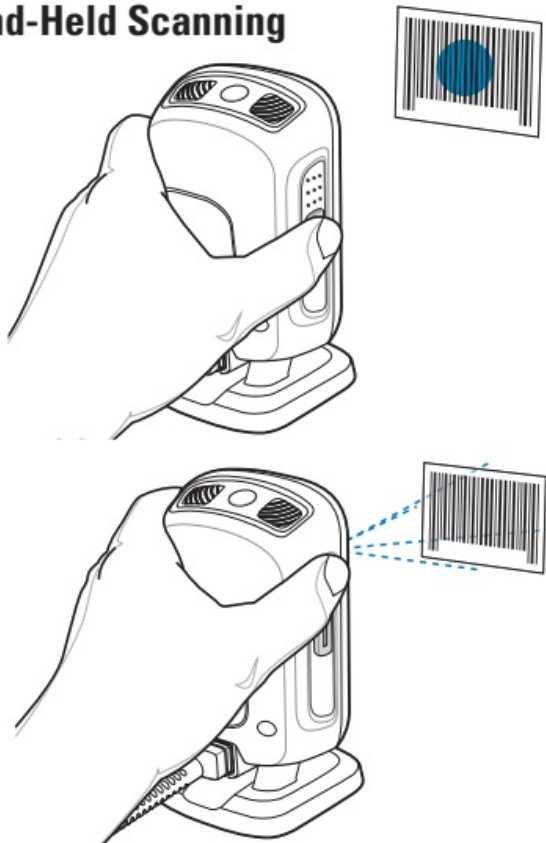
SPANISH

OPTIMUM SCANNING

Hands-Free Scanning



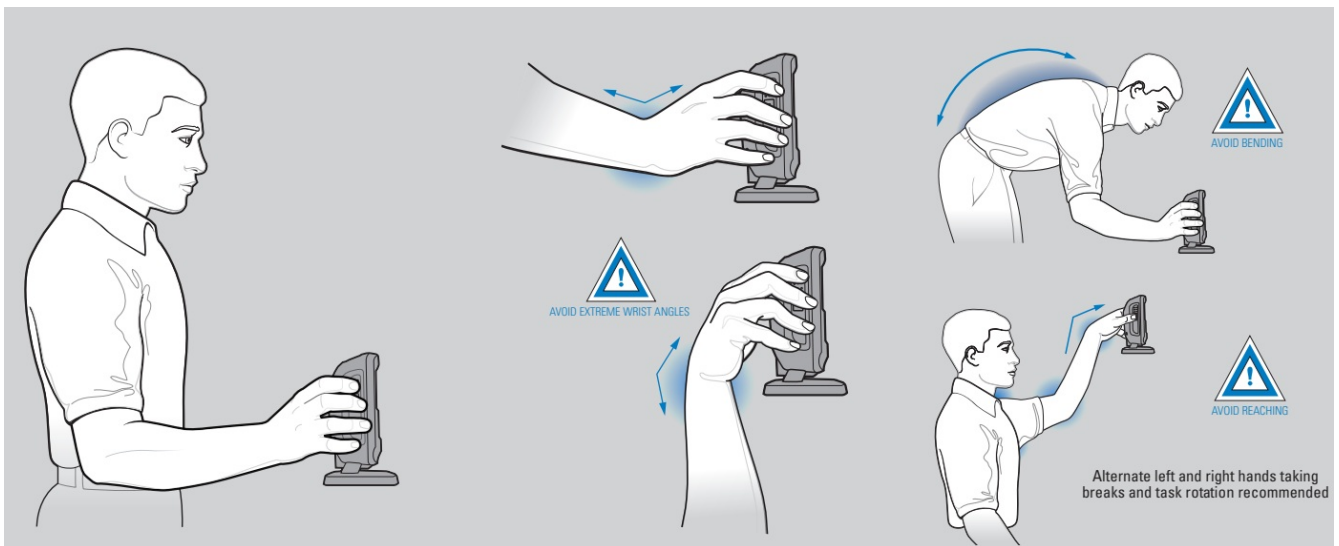
Hand-Held Scanning



Aiming



- AVOID BENDING AND REACHING



BEEPER INDICATIONS

- Standard Use

Low/medium/high beep

Power up

Short medium beep

Bar code decoded

4 long low beeps

Transmission error detected; data is ignored

- Parameter Menu Scanning

High/low/high/low beep

Successful parameter setting

High/low beep

Correct programming sequence performed

Low/high beep

Incorrect programming sequence or "Cancel" bar code scanned

LED INDICATIONS

- Hand-Held Scanning

Off

Scanner is on and ready to scan, or no power to scanner

Green

Bar code is successfully decoded

Red

Transmission error

- Hands-Free (Presentation) Scanning

Off

No power to scanner

Green

Scanner is ready to scan

Off Momentarily

Bar code is successfully decoded

Red

Transmission Error

123SCAN2

123Scan2 is an easy-to-use, PC-based software tool that enables rapid and easy customized setup via a bar code or USB cable. For more information, visit: <http://www.zebra.com/123Scan2>.

REGULATORY INFORMATION

2015 Symbol Technologies, Inc. Zebra reserves the right to make changes to any product to improve reliability, function, or design. Zebra does not assume any product liability arising out of, or in connection with, the application or use of any product, circuit, or application described herein. No license is granted, either expressly or by implication, estoppel, or otherwise under any patent right or patent, covering or relating to any combination, system, apparatus, machine, material, method, or process in which Zebra products might be used.

An implied license exists only for equipment, circuits, and subsystems contained in Zebra products. Zebra and the Zebra head graphic are registered trademarks of ZIH Corp. The Symbol logo is a registered trademark of Symbol Technologies, Inc., a Zebra Technologies company. This Zebra Product may include Zebra Software, Commercial Third Party Software, and Publicly. Available software. Refer to Product Reference Guide for complete copyright, conditions and disclaimer information.

Power Supply

Use ONLY a LISTED, Type no. PWRS-14000 (5Vdc, 850mA), direct plug-in power supply, marked Class 2 or LPS (IEC60950-1, SELV). Use of alternative Power Supply will invalidate any approvals given to this unit and may be dangerous.

Waste Electrical and Electronic Equipment (WEEE)

For EU Customers: All products at the end of their life must be returned to Zebra for recycling. For information on how to return product, please go to: <http://www.zebra.com/weee>.

Zebra and the Zebra head graphic are registered trademarks of ZIH Corp. The Symbol logo is a registered trademark of Symbol Technologies, Inc., a Zebra Technologies company.

2015 Symbol Technologies, Inc
72-140088-03 Revision A March 2015



Ergonomic Recommendations

Caution: To avoid or minimize the potential risk of ergonomic injury, follow the recommendations below. Consult with your local Health & Safety Manager to ensure that you are adhering to your company's safety programs to prevent employee injury.

- Reduce or eliminate repetitive motion.
- Maintain a natural position.
- Reduce or eliminate excessive force
- Keep objects that are used frequently within easy reach
- Perform tasks at correct heights
- Reduce or eliminate vibration
- Reduce or eliminate direct pressure
- Provide adjustable workstations
- Provide adequate clearance
- Provide a suitable working environment
- Improve work procedures.

Regulatory Information

This guide applies to Model Number DS9208. All Zebra devices are designed to be compliant with rules and regulations in locations they are sold and will be labeled as required. Local language translations are available at the following website:

<http://www.zebra.com/support>.

Any changes or modifications to Zebra equipment, not expressly approved by Zebra, could void the user's authority to operate the equipment. Declared maximum operating temperature: 40 C / 104°F.

Radio Frequency Interference Requirements

Note: This equipment has been tested and found to comply with the limits for a Class B digital device, under Part 15 of the FCC rules. These limits are designed to provide reasonable protection against harmful interference in a residential installation. This equipment generates, uses, and can radiate radio frequency energy, and, if not installed and used in accordance with the instruction manual, may cause harmful interference to radio communications. However, there is no guarantee that interference will not occur in a particular installation. If this equipment does cause harmful interference to radio or television reception, which can be determined by turning the equipment off and on, the user is encouraged to try to correct the interference by one or more of the following measures:

- Reorient or relocate the receiving antenna
- Increase the separation between the equipment and the receiver
- Connect the equipment into an outlet on a circuit different from that to which the receiver is connected
- Consult the dealer or an experienced radio/TV technician for help.

Radio Frequency Interference Requirements – Canada

This Class B digital apparatus complies with Canadian ICES-003.

Marking and European Economic Area (EEA)

Statement of Compliance

Zebra hereby declares that this device complies with all the applicable Directives, 2004/108/EC, 2006/95/EC and 2011/65/EU. A Declaration of Conformity may be obtained from <http://www.zebra.com/doc>.

EAS

System integrator to ensure the final product is compliant with all applicable EU Directives.

<http://www.zebra.com/ds9208>

Japan (VCCI) – Voluntary Control Council for Interference Class B ITE

Korea Warning Statement for Class B ITE

Ukraine

This equipment corresponds to the requirements of the Technical Regulation No. 1057, 2008 on restrictions as to the use of some dangerous substances in electric and electronic devices.

Warranty

For the complete Zebra hardware product warranty statement, go to: <http://www.zebra.com/warranty>.

For Australia Only

This warranty is given by Zebra Technologies Asia Pacific Pte. Ltd., 71 Robinson Road, #05-02/03, Singapore 068895, Singapore. Our goods come with guarantees that cannot be excluded under the Australia Consumer Law. You are entitled to a replacement or refund for a major failure and compensation for any other reasonably foreseeable loss or damage. You are also entitled to have the goods repaired or replaced if the goods fail to be of acceptable quality and the failure does not amount to a major failure.

Zebra Technologies Corporation Australia's limited warranty above is in addition to any rights and remedies you

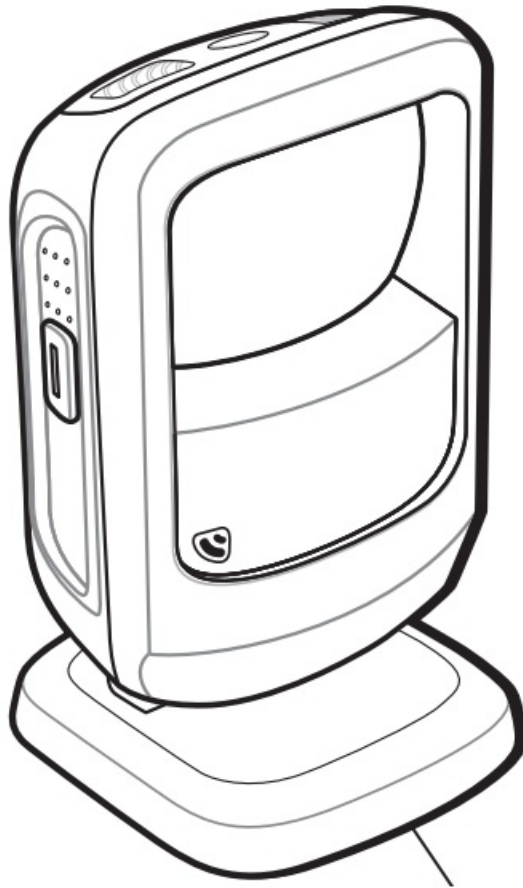
may have under the Australian Consumer Law. If you have any queries, please call Zebra Technologies Corporation at +65 6858 0722. You may also visit our website: <http://www.zebra.com> for the most updated warranty terms.

Service Information

If you have a problem using the equipment, contact your facility's Technical or Systems Support. If there is a problem with the equipment, they will contact Zebra. Support at: <http://www.zebra.com/support>. For the latest version of this guide go to: <http://www.zebra.com/support>.

LED Devices

Complies with IEC/EN60825-1:2001 & EN 62471: 2006 and IEC62471: 2008.



LED LIGHT DO NOT VIEW DIRECTLY WITH OPTICAL INSTRUMENTS CLASS 1M LED PRODUCT LED-LICHT SEHEN SIE NICHT DIREKT MIT OPTISCHEN INSTRUMENT AN PRODUKT der KATEGORIEN-1M LED LUMIERE DE LED NE REGARDEZ PAS DIRECTEMENT AVEC LES INSTRUMENTS OPTIQUES PRODUIT DE LA CLASSE 1M LED.

Caution – use of controls or adjustments or performance of procedures other than those specified herein may result in hazardous light exposure.

Download PDF: [Zebra DS9208 Barcode Scanner User Guide](#)

References

- [User Manual](#)