



ZD421 Desktop  
Printer



# ZEBRA ZD421 Desktop Printer User Guide

[Home](#) » [ZEBRA](#) » ZEBRA ZD421 Desktop Printer User Guide 

## Contents

- [1 ZEBRA ZD421 Desktop Printer](#)
- [2 Product Specifications](#)
- [3 Product Usage Instructions:](#)
- [4 Frequently Asked Questions \(FAQ\)](#)
- [5 Setup](#)
- [6 Remove Packing](#)
- [7 Load Media](#)
- [8 Adjust Sensor](#)
- [9 Close Printer](#)
- [10 Connect Power](#)
- [11 Connect USB](#)
- [12 Power On](#)
- [13 Smart Calibration](#)
- [14 Print Configuration](#)
- [15 Support and Information](#)
- [16 Media Out](#)
- [17 Cleaning](#)
- [18 Documents / Resources](#)
  - [18.1 References](#)





## Product Specifications

- **Model:** ZD421D
- **Type:** Desktop Printer
- **Connectivity:** USB
- **Media:** Not included

## Product Usage Instructions:

### Setup:

Visit [zebra.com/zd421d-info](https://zebra.com/zd421d-info) and install the driver for your printer.

### Remove Packing:

Extraer embalaje / Retirer l'emballage

### Load Media:

1. Verify the roll spins easily on the holder.
2. Despliegue los soportes del rollo y coloque el rollo en la impresora.
3. Assurez-vous que le rouleau tourne facilement.

### Connect Power and USB:

1. Connect the power cable.
2. Connect the USB cable.
3. Power on the printer by pressing the POWER button.

## Support and Information:

- For support, visit [zebra.com/supportcommunity](https://zebra.com/supportcommunity)
- For supplies, visit [zebra.com/supplies](https://zebra.com/supplies)

- Contact Zebra at [zebra.com/contactsupport](https://zebra.com/contactsupport)

**Cleaning:**

Regularly clean the printer to maintain optimal performance.

**Frequently Asked Questions (FAQ)**

- **Is media included with the ZD421D printer?**

No, media is not included with the printer. You will need to purchase media separately.

- **How do I find product patent information?**

Visit [zebra.com/patents](https://zebra.com/patents) to learn more about product patent information.

**Setup****IMPORTANT**

Go to [zebra.com/zd421d-info](https://zebra.com/zd421d-info) and install the driver for your printer.



The driver MUST be installed before connecting the printer to the computer, or it will cause complications. If your Microsoft Windows-based computer does not have the driver installed for this printer, download it from [zebra.com/zd421d-info](https://zebra.com/zd421d-info) and install it before continuing.

**Remove Packing**

- After unpacking, make sure you have all items shown below.



Printer  
Impresora  
Imprimante



Quick Start Guide  
Guía de inicio rápido  
Guide de démarrage rapide



USB Cable  
Cable USB  
Câble USB



Power Supply  
Fuente de alimentación  
eléctrica Bloc d'alimentation



Power Cord  
Cable de alimentación  
Cordon d'alimentation

- Slide the release latches (1) to the front to unlock the cover.

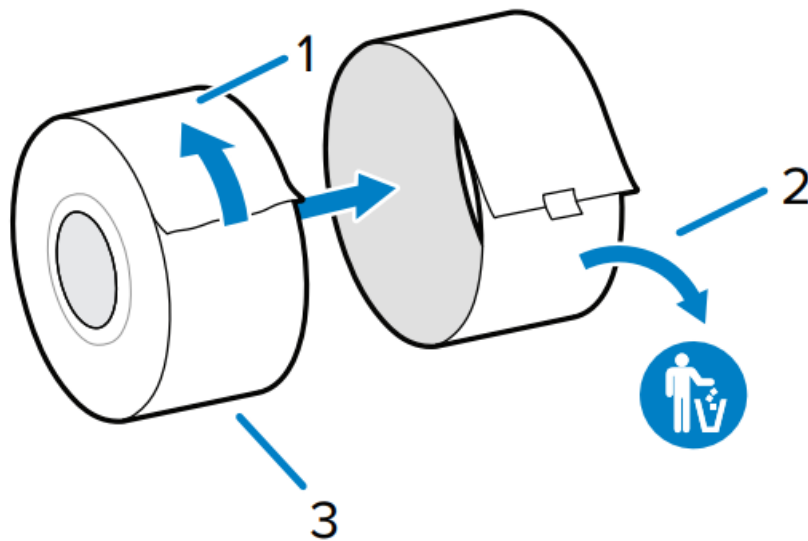


- Open the printer and remove the packing (1).

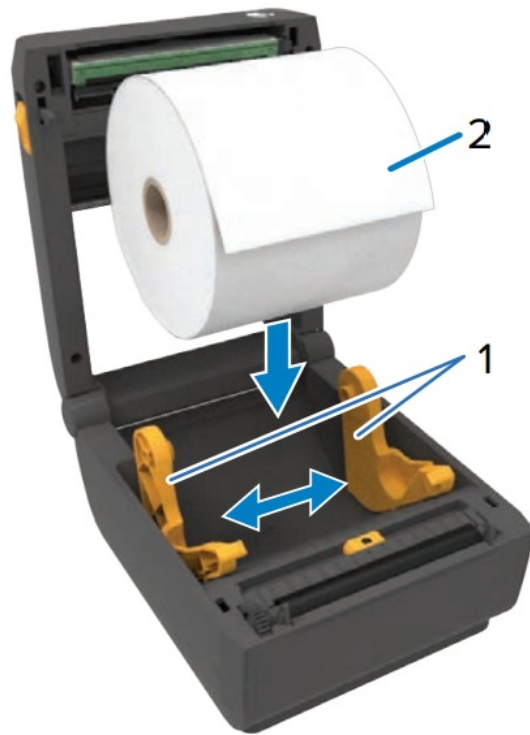


## Load Media

- Unroll (1) and discard (2) the outer layer of the media roll (3).



- Spread the roll holders open (1) and place the roll (2) into the printer.



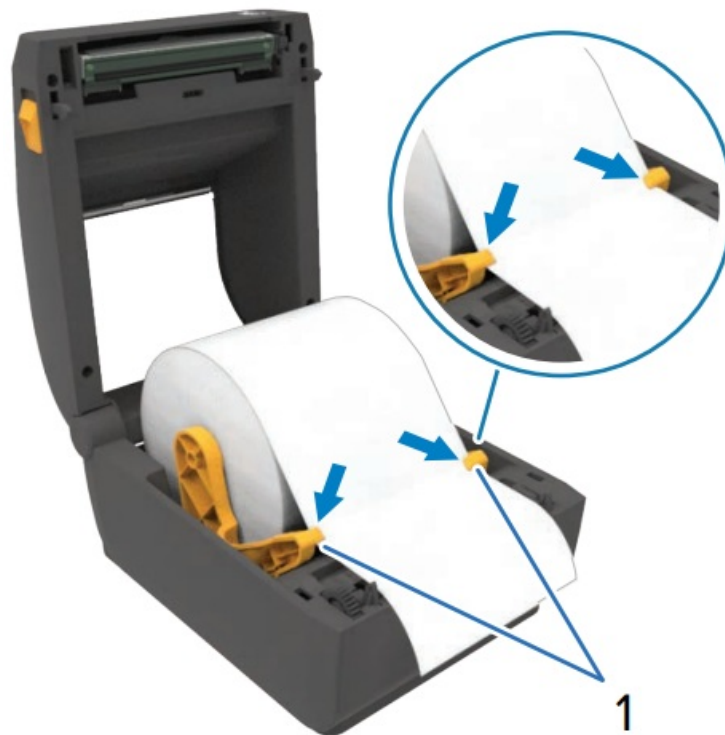
- Verify the roll spins easily on the holder.



- Pull the end of the roll past the front edge of the printer.



- Press the media under the guides (1).



## Adjust Sensor

- Align the sensor to the center of the roll for regular labels (1).



- Align the sensor to the edge of the roll for marked labels (1).



### **Close Printer**

Push down on the front edge of the printer until it locks.



## Connect Power

1. Plug the power supply into the printer.
2. Plug the power cable into the power supply.
3. Plug the power cord into an appropriate receptacle.
4. Verify that the power supply lights green.



## Connect USB

1. Connect a USB cable to the printer.
2. Connect the other end to your computer.



## Power On

- Press POWER (1).

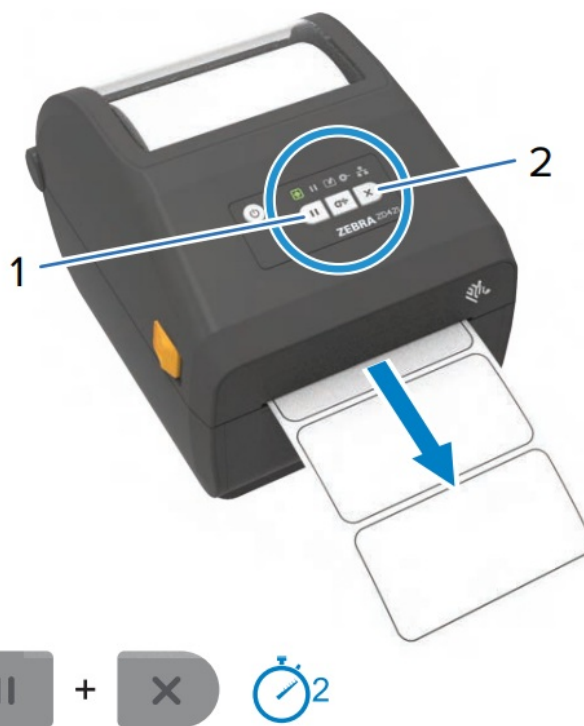


- When the printer is ready, the printer status light turns green (1).



## Smart Calibration

Press and hold PAUSE (1) + CANCEL (2) for two seconds to line up the labels.



## Print Configuration

Press and hold FEED (1) + CANCEL (2) for two seconds to print a configuration report.



## Support and Information

- View user documentation. [zebra.com/zd421d-info](https://zebra.com/zd421d-info)



- Need to design a label? [zebra.com/zebradesigner](https://zebra.com/zebradesigner)



- Learn about genuine Zebra supplies. [zebra.com/supplies](https://zebra.com/supplies)



- Need to manage your printer? [zebra.com/profilemanager](https://zebra.com/profilemanager)



- View Quick Answers and Knowledge Base. [zebra.com/knowledge](https://zebra.com/knowledge)



- Join Community Connection of Zebra users and ambassadors. [zebra.com/supportcommunity](https://zebra.com/supportcommunity)



- Contact Zebra about your printer. [zebra.com/contactsupport](https://zebra.com/contactsupport)



- Need to secure your printer? [zebra.com/printsecure](https://zebra.com/printsecure)



- Learn about product patent information. [ip.zebra.com](http://ip.zebra.com)



## Media Out

- When the media runs out, the printer status and media status lights will turn red (1).



- Open the printer and discard the empty roll (1).



## Cleaning

Clean the printhead (1) with a cleaning pen (2). Clean from the middle to the outside. Do not use a cleaning pen on the platen.



## Documents / Resources



**[ZEBRA ZD421 Desktop Printer](#)** [pdf] User Guide  
ZD421, ZD421D, ZD421 Desktop Printer, ZD421, Desktop Printer, Printer

References

- [User Manual](#)

[Manuals+](#), [Privacy Policy](#)

This website is an independent publication and is neither affiliated with nor endorsed by any of the trademark owners. The "Bluetooth®" word mark and logos are registered trademarks owned by Bluetooth SIG, Inc. The "Wi-Fi®" word mark and logos are registered trademarks owned by the Wi-Fi Alliance. Any use of these marks on this website does not imply any affiliation with or endorsement.