



# ZEBRA WS50 Android Wearable Computer User Guide

[Home](#) » [ZEBRA](#) » ZEBRA WS50 Android Wearable Computer User Guide 

## Contents

- 1 ZEBRA WS50 Android Wearable Computer
- 2 WS50 Converged Assembly
- 3 WS50 Converged Spare Battery and Charger
- 4 Power supply for single cradle
- 5 WS50 Converged Single Charging Cradle
- 6 WS50 Converged Multi-Slot Device Cradle
- 7 WS50 Converged Multi-Slot Battery Charger
- 8 WS50 Converged Multi-Slot Ethernet Cradle
- 9 WS50 Charge Cable
- 10 WS50 Converged Two Finger Mount
- 11 WS50 Converged Back of Hand Mount
- 12 Documents / Resources
  - 12.1 References
- 13 Related Posts



## ZEBRA WS50 Android Wearable Computer



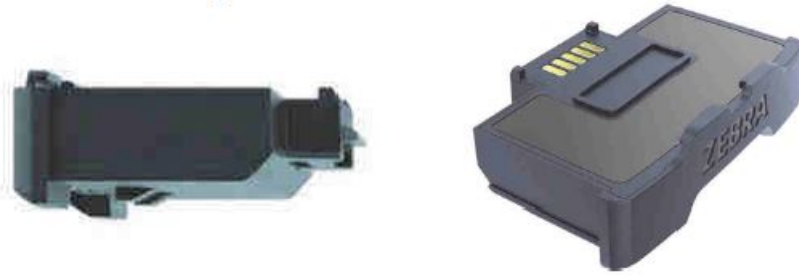
### WS50 Converged Assembly



### WS50 Converged Spare Battery and Charger

#### Spare 1300mAh Li-ion Battery

BTRY-WS5X-13MA-01 PowerPrecision Spare Lithium-Ion battery, 1300mAh, for WS50 Converged



#### **WS50 Converged, Four Slot**



Spare Battery Charger SAC-WS5X-4S13-01: WS50 Converged four slot spare battery charger, charges four 1300mAh batteries. LEDs on the cradle indicate charge status of each battery.

#### **Power supply for single cradle**



- PWR-BGA12V50W0WW

- Level VI AC/DC Power Supply
- AC Input: 100-240V, 2.4A
- DC Output: 12V, 4.16A, 50W
- Requires: DC line cord and Country specific grounded AC line cord.
- CBL-DC-388A1-01
  - DC Line Cord for running the single slot cradles or battery chargers from a single Level VI power supply  
PWR-BGA12V50W0WW
- 23844-00-00R
  - US AC line cord, 7.5 feet long, grounded, three wire for power supplies.

### Charging LED indicators

Charging LED indicators			
	Off	Battery not charging	
	Solid Amber	Healthy battery charging	
	Solid Green	Healthy battery charging complete	
	Fast Blink Red	Charging error	
	Solid Red	Unhealthy battery	

### WS50 Converged Single Charging Cradle

#### WS50 Converged, Two Slot Device Cradle

CRD-WS5X-2SCV-01: Two slot charge-only cradle, charges two WS50 Converged devices. LED near the top of the WS50 display indicate charge status of each device.

“Stadium” positioning enables viewability of the display on the rear device while a device is placed in the front slot.



#### Power supply for multi-slot cradle



- PWR-BGA12V108W0WW
  - Level VI AC/DC Power Supply
  - AC Input: 100-240V, 2.8A
  - DC Output: 12V, 9A, 108W .

- CBL-DC-381A1-01
  - DC Line Cord for running multi-slot cradles from a single Level VI power supply PWR-BGA12V108W0WW
- 23844-00-00R
  - US AC line cord, 7.5 feet long, grounded, three wire for power supplies.
- BRKT-SCRD-SMRK-01
  - Rack/Wall Mounting bracket for multi-slot cradles.

**Charging LED indicators**

Charging LED indicators			
	Off	Battery not charging	
	Solid Amber	Healthy battery charging	
	Solid Green	Healthy battery charging complete	
	Fast Blink Red	Charging error	
	Solid Red	Unhealthy battery	

**WS50 Converged Multi-Slot Device Cradle**

**WS50 Converged, 10 Slot Device Cradle**



CRD-WS5X-10SCV-01: Ten slot charge-only cradle, charges ten WS50 Converged devices. LED near the top of the WS50 display iinnnddiiccaattee cchhaarrggee ssttaattuuss ooff eeaacchh ddeevviiccee..

**WS50 Converged Multi-Slot Battery Charger**

**WS50 Converged, 20 Slot Spare Battery Charger**



SAC-WS5X-20S13-01: WS50 Converged twenty-slot spare battery charger, charges four 1300mAh batteries. LEDs on the cradle indicate charge status of each battery.

### **WS50 Converged Multi-Slot Ethernet Cradle**

**WS50 Converged, 5 Slot Ethernet Cradle with**



Spare Battery Charger

CRD-WS5X-5SECV-01: WS50 Converged Five Slot Ethernet Cradle with Spare Battery Charger, charges 5 WS50 Converged devices and 5 spare 1300mAh batteries. LED near the top of the WS50 display indicate charge status of each device. LEDs on the cradle indicate charge status of each battery.

### **WS50 Charge Cable**

**WS50 Charge Cable**





CBL-WS5X-USB1-01 : WS50 charge cable. Provides charging and communications. Snaps on to bottom of WS50 device. Cable length 6 inches / 15cm. USB-C female port enables client-host connectivity. Requires separate purchase of USB-C cable and AC power adapter.

#### **WS50 Two Finger Trigger Mount**

SG-WS5X-TRGA-01: WS50 Converged replacement trigger mount. Includes strap and finger pad.

#### **Accessories for WS50 charge cable**



- PWR-WUA5V12W0XX
  - Power Supply-100-240 VAC, 5 V, 2.5 A with country specific plugs.
- CBL-TC5X-USBC2A-01



- USB-C to USB-A communication and charging cable, 1M length

## Charging LED indicators

Charging LED indicators		
	<b>Off</b>	<b>Battery not charging</b>
	<b>Solid Amber</b>	<b>Healthy battery charging</b>
	<b>Solid Green</b>	<b>Healthy battery charging complete</b>
	<b>Fast Blink Red</b>	<b>Charging error</b>
	<b>Solid Red</b>	<b>Unhealthy battery</b>

## WS50 Converged Two Finger Mount

### WS50 Two Finger Trigger Mount



SG-WS5X-TRGA-01: WS50 Converged replacement trigger mount. Includes strap and finger pad.



## Accessories for WS50 back of hand mount



- SG-WS5X-STRP-10
  - Replacement finger strap for WS50 Converged, 10 pack
- SG-WS5X-SHLCS-01
  - Replacement protective shell for WS50 Converged. Two input buttons.
- SG-WS5X-DFTLC-01
  - Replacement protective deflector for WS50 Converged. Includes mounting screws.
- SG-WS5X-SCRNP1-01
  - Replacement screen protector for WS50 display.

## **WS50 Converged Back of Hand Mount**

### **WS50 Back of Hand Mount**

SG-WS5X-BHMT-01 : WS50 Converged back of hand mount. Includes mounting plate and trigger assembly. Requires separate purchase of hand wrap.



Part #	Hand / Size
<b>SG-WEAR-HNWPRS-01</b>	<b>Right, small</b>
<b>SG-WEAR-HNWPLS-01</b>	<b>Left, small</b>
<b>SG-WEAR-HNWPRM-01</b>	<b>Right, medium</b>
<b>SG-WEAR-HNWPLM-01</b>	<b>Left, medium</b>
<b>SG-WEAR-HNWPRL-01</b>	<b>Right, large</b>
<b>SG-WEAR-HNWPLL-01</b>	<b>Left, large</b>



**Accessories for WS50 back of hand**






- SG-WEAR-HNWPXX-01
  - Spare Hand Wrap for WS50 Back of Hand Mount. Available in small, medium, large and left, right.
- SG-WS5X-SHLCS-01  
Replacement protective shell for WS50 Converged. Two input buttons.
- SG-WS5X-DFLTC-01  
Replacement protective deflector for WS50 Converged. Includes mounting screws.
- SG-WS5X-SCRNP1-01  
Replacement screen protector for WS50 display.

BSR idware GmbH Jakob-Haringer-Str.3  
A-5020 Salzburg  
[https://www.bsr.atsales@bsr.at](mailto:https://www.bsr.atsales@bsr.at)

## Documents / Resources

	<p><a href="#">ZEBRA WS50 Android Wearable Computer</a> [pdf] User Guide WS50, Android Wearable Computer, Wearable Computer, WS50, Computer</p>
	<p><a href="#">ZEBRA WS50 Android Wearable Computer</a> [pdf] User Manual WS5001, UZ7WS5001, WS50 Android Wearable Computer, WS50, Android Wearable Computer, Android Computer, Wearable Computer</p>

## References

-  [Bluetooth® Technology Website](#)
-  [FCC ID Search | Federal Communications Commission](#)
-  [Zebra Customer Community](#)
-  [Zebra Customer Community](#)
-  [Zebra Customer Community](#)
-  [Bluetooth® Technology Website](#)
-  [FCC ID Search | Federal Communications Commission](#)
-  [Declarations of Conformity | Zebra Technologies](#)
-  [Request a Repair | Zebra](#)
-  [Support and Downloads | Zebra](#)
-  [Product Warranty Information | Zebra](#)
-  [Zebra Technologies | Visible. Connected. Optimized.](#)
-  [Battery Documentation](#)
-  [Declarations of Conformity | Zebra Technologies](#)
-  [Request a Repair | Zebra](#)
-  [RF Exposure and Assessment Standards](#)
-  [Support and Downloads | Zebra](#)
-  [WEEE and EU Battery Directive FAQs | Zebra](#)
-  [WS50 Android Wearable Computer | Zebra](#)
-  [BSR Barcode und RFID](#)
-  [L10 Series | Zebra](#)
-  [RF Exposure and Assessment Standards](#)
-  [WEEE and EU Battery Directive FAQs | Zebra](#)
-  [Battery Documentation](#)