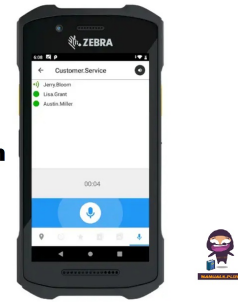


 **ZEBRA**
Workcloud
Communication
Voice Client



ZEBRA Workcloud Communication Voice Client User Guide

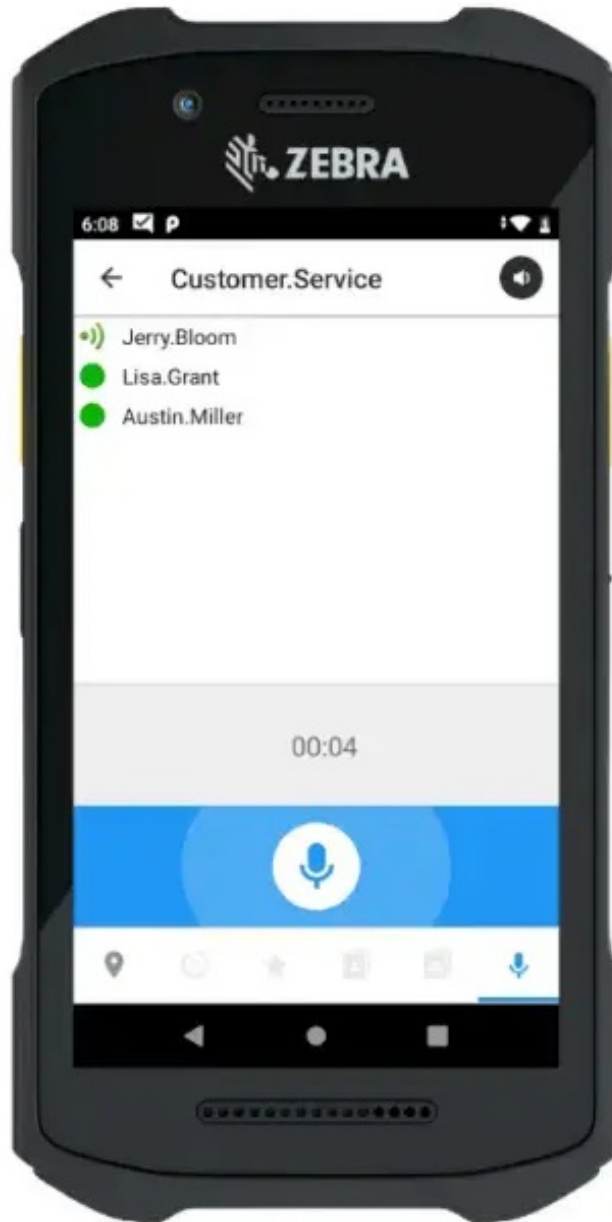
[Home](#) » [ZEBRA](#) » ZEBRA Workcloud Communication Voice Client User Guide 

Contents

- [1 ZEBRA Workcloud Communication Voice Client](#)
- [2 Terms of Use](#)
- [3 Introduction](#)
- [4 Overview](#)
- [5 Documents / Resources](#)
 - [5.1 References](#)



ZEBRA Workcloud Communication Voice Client



Copyright

ZEBRA and the stylized Zebra head are trademarks of Zebra Technologies Corporation, registered in many jurisdictions worldwide. All other trademarks are the property of their respective owners. 2024 Zebra Technologies Corporation and/or its affiliates. All rights reserved. Information in this document is subject to change without notice. The software described in this document is furnished under a license agreement or nondisclosure agreement. The software may be used or copied only by the terms of those agreements.

For further information regarding legal and proprietary statements, please go to:

SOFTWARE: zebra.com/informationpolicy

COPYRIGHTS: zebra.com/copyright

PATENTS: ip.zebra.com

WARRANTY: zebra.com/warranty

END USER LICENSE AGREEMENT: zebra.com/eula

Terms of Use

Proprietary Statement

This manual contains proprietary information about Zebra Technologies Corporation and its subsidiaries ("Zebra Technologies"). It is intended solely for the information and use of parties operating and maintaining the equipment described herein. Such proprietary information may not be used, reproduced, or disclosed to any other parties for any other purpose without the express, written permission of Zebra Technologies.

Product Improvements

Continuous improvement of products is a policy of Zebra Technologies. All specifications and designs are subject to change without notice.

Liability Disclaimer

Zebra Technologies takes steps to ensure that its published Engineering specifications and manuals are correct; however, errors do occur. Zebra Technologies reserves the right to correct any such errors and disclaims liability resulting therefrom.

Limitation of Liability

In no event shall Zebra Technologies or anyone else involved in the creation, production, or delivery of the accompanying product (including hardware and software) be liable for any damages whatsoever (including, without limitation, consequential damages including loss of business profits, business interruption, or loss of business information) arising out of the use of, the results of use of, or inability to use such product, even if Zebra Technologies have been advised of the possibility of such damages. Some jurisdictions do not allow the exclusion or limitation of incidental or consequential damages, so the above limitation or exclusion may not apply to you.

Introduction

This guide describes a method for using Zebra StageNow to configure the Zebra Workcloud Communication Voice Client (Zebra Voice). The system administrator should adjust this method as necessary to accommodate the specific business environment. StageNow tutorial and training materials are located at:

zebra.com/us/en/support-downloads/software/utilities/stagenow.html or techdocs.zebra.com/stagenow/.

NOTE

Requires Zebra Voice version 8.2.729 or later. Procedures in this guide are for StageNow version 3.0.1.1038 and can differ for other versions of StageNow.

Overview

NOTE

If using Zebra Voice version 9. x with Profile Manager, make sure to install the Device Fabric Service (DFS) APK before installing the Zebra Voice APK. When configuring Zebra Voice for the first time, install both the Zebra Voice APK file and the Zebra Voice configuration file on the device. When updating the configuration file of an existing installation, only the XML configuration file is required.

The configuration file WFCConnect.xml stores all Zebra Voice configuration parameters as key and value pairs. For information on how to create the configuration file, refer to the Workcloud Communication Voice Client 8. x Administrator Guide for the desired PBX type. Zebra Voice listens for the WFC. voice.ACTION_UPDATE_CONFIG intent during runtime. When Zebra Voice receives the intent from StageNow, Zebra Voice uses WFCConnect.xml to update the Zebra Voice configuration parameters. When installing or updating WFCConnect.xml, Zebra Voice must be running to receive the intent.

NOTE

The package name and Android application ID for Zebra Voice is com.symbol.wfc.voice.

Installing the APK

To install the Zebra Voice app on a Zebra Android device:

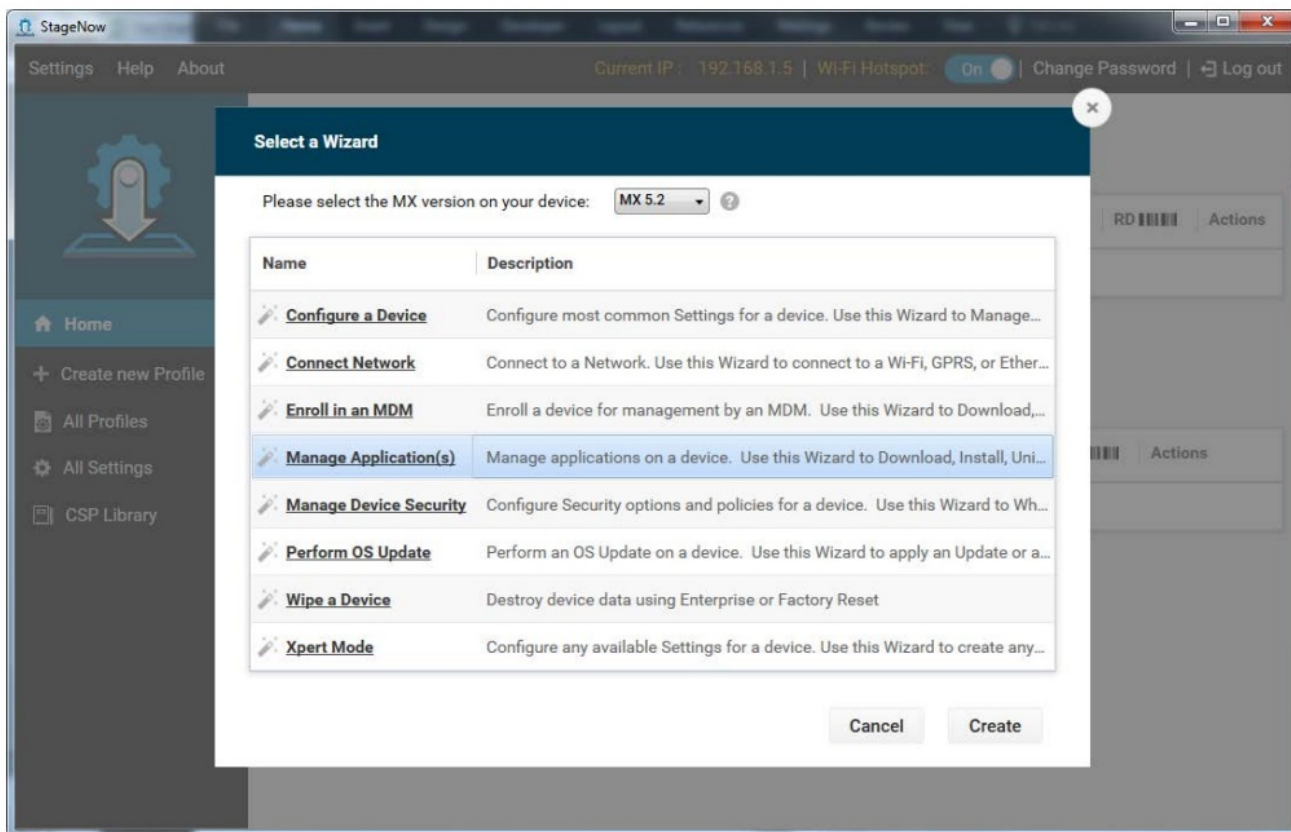
1. From the StageNow Tool, select Create a New Profile.
2. From the drop-down menu, select the MX version on your device.

NOTE

Procedures in this guide are for MX versions 4. x and 5. x and can differ from other MX versions.

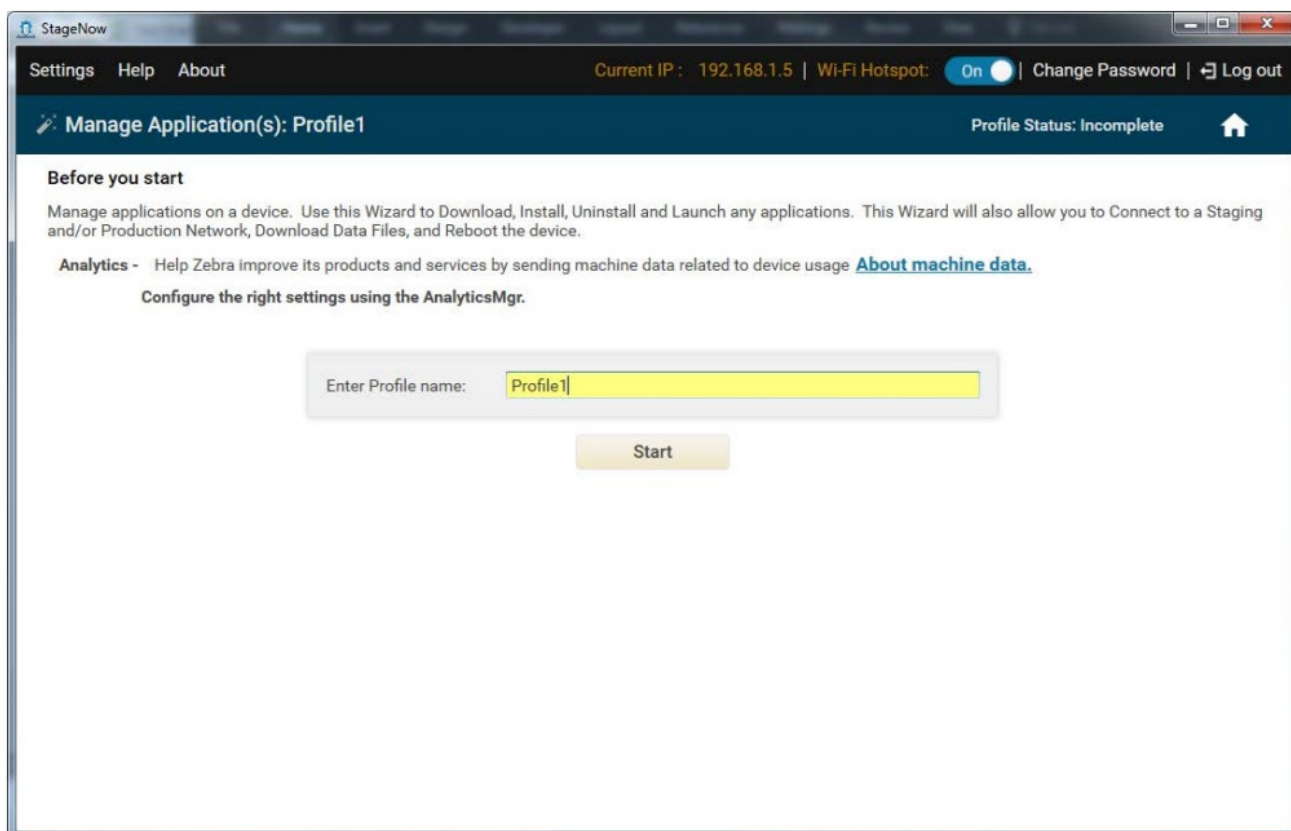
3. Select Manage Applications. Figure 1 Select a Wizard

Figure 1 Select a Wizard



4. Select Create.
5. In the Enter Profile name field, enter the profile name.
6. Select Start.

Figure 2 Enter Profile Name



7. For the question, Would you like to connect to a network?, select No.



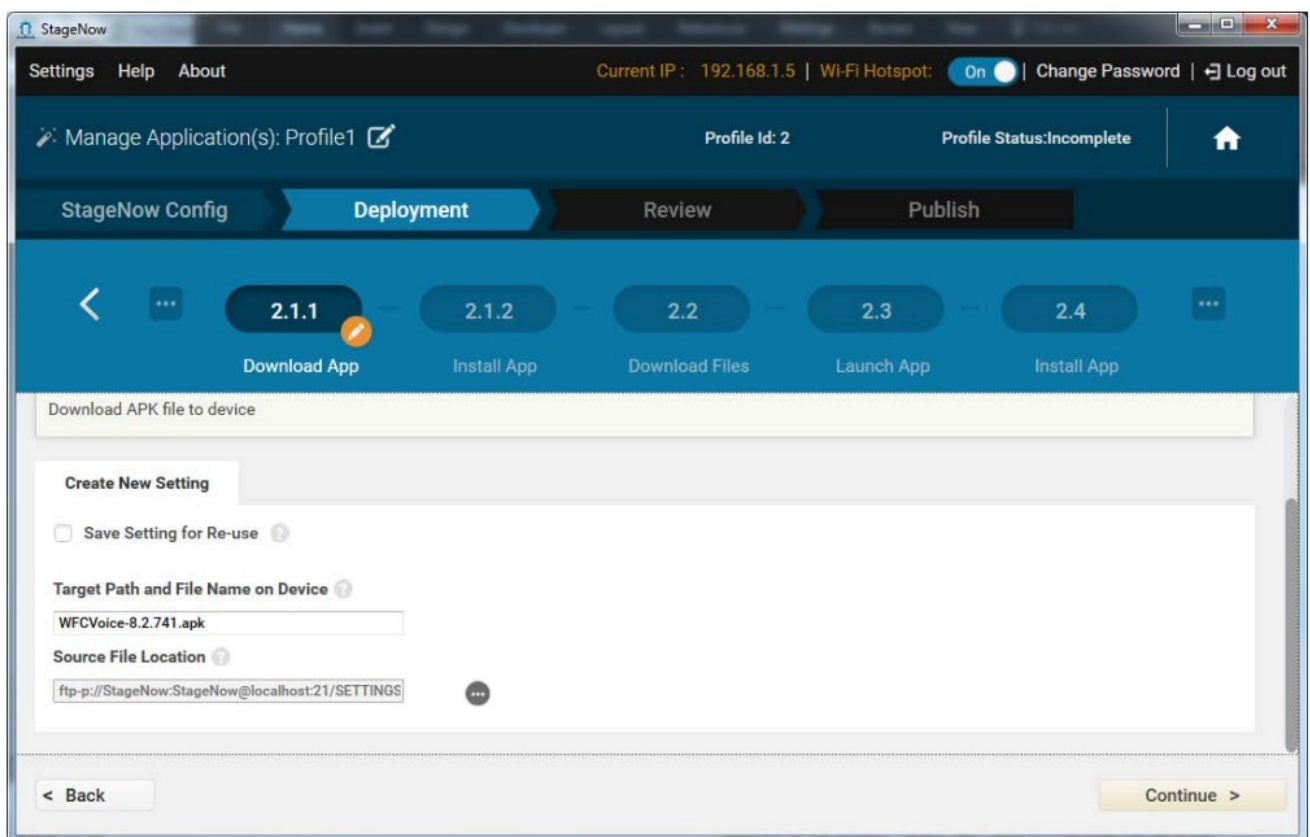
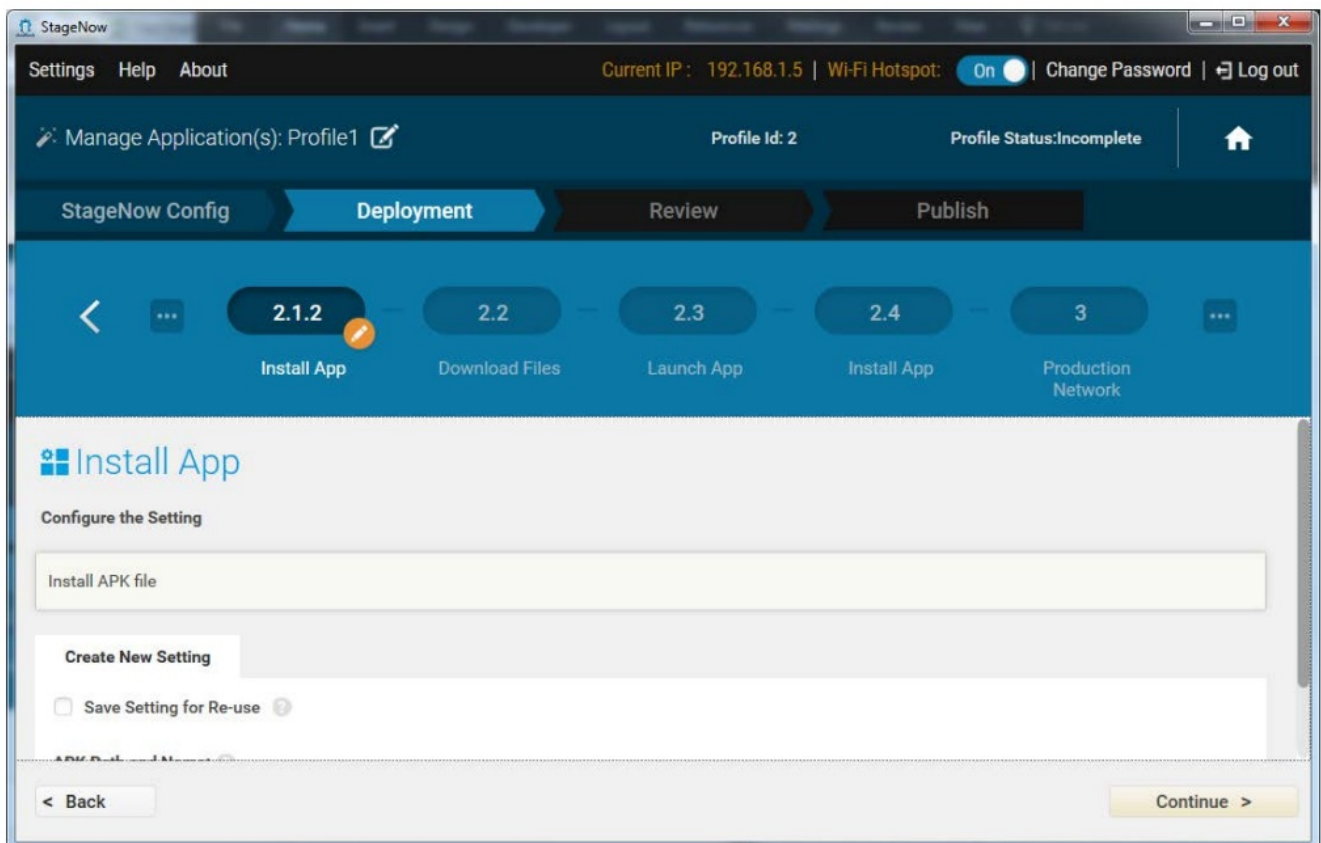
8. For the question, Would you like to Uninstall an installed application?, select No.
9. For the question, Would you like to install an application?, select Yes.
10. For the question, Is your application already present on the device?, select No, I want to Download the file to my device. The Download App page appears.
11. In the Target Path and File Name on the Device field, enter the target path and file name for your device. For example, /sdcard/WFCVoice-8.2.741.apk.
12. In the Source File Location field, select .
13. In the Staging Server drop-down menu, select one of the following options:
 - Built In  – Select and navigate to the location of the APK file and staging server configuration.
 - External – Enter the source path and file name.
14. Select OK.
15. Select Continue.

Figure 3 Deployment - Download App



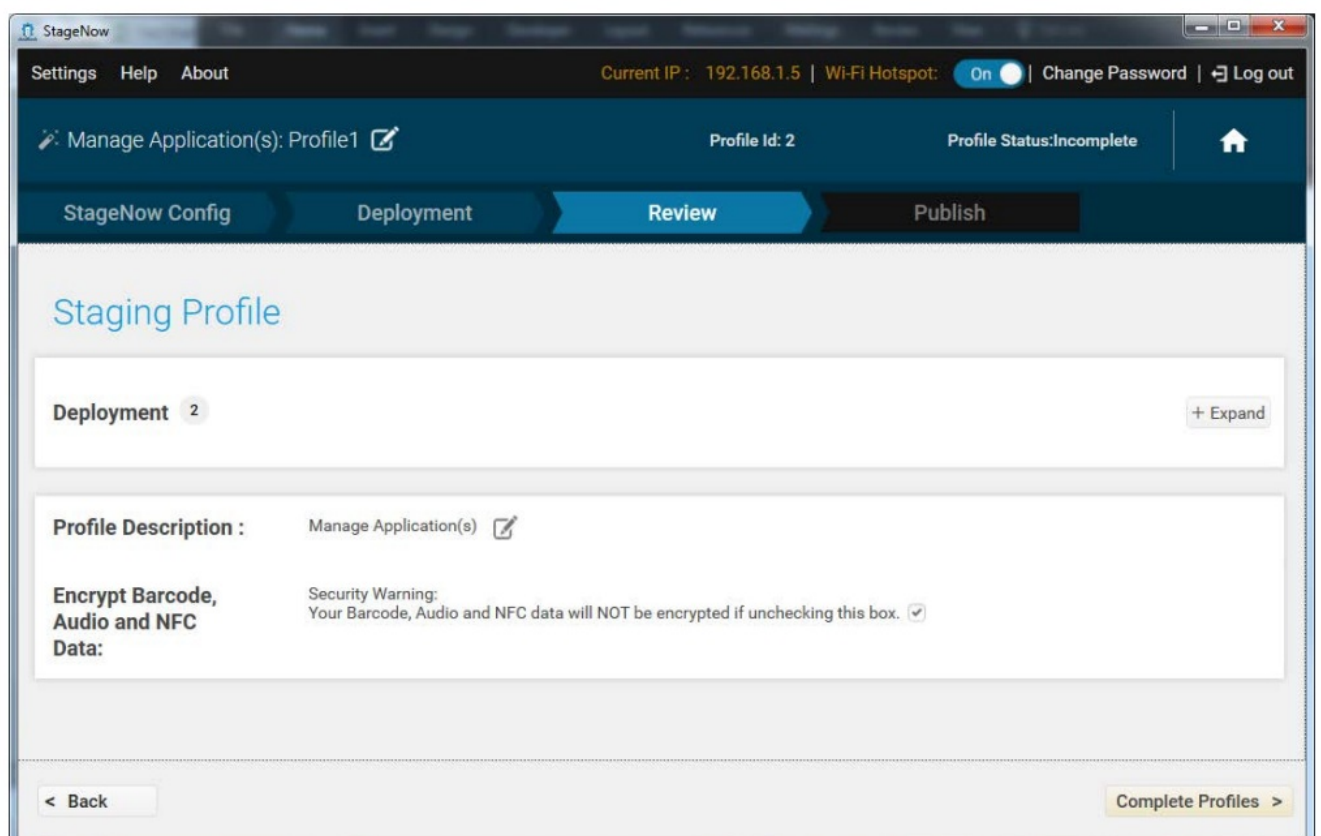
16. From the Install App screen, select Continue.

Figure 4 Deployment - Install App



17. For the question, Would you like to download an Application Data file?, select No.
18. For the question, Would you like to launch an APK file?, select No.
19. For the question, Would you like to install an application?, select No.
20. For the question, Would you like to connect to another network?, select No.
21. For the question, Would you like to reboot the device?, select No.

Figure 5 Deployment - Staging Profile



22. From the Staging Profile page, select Complete Profiles.

Installing or Updating the XML Configuration File

Installing or updating the XML configuration file requires:

- Pushing the XML configuration file to the device.
- Sending an intent to the device.

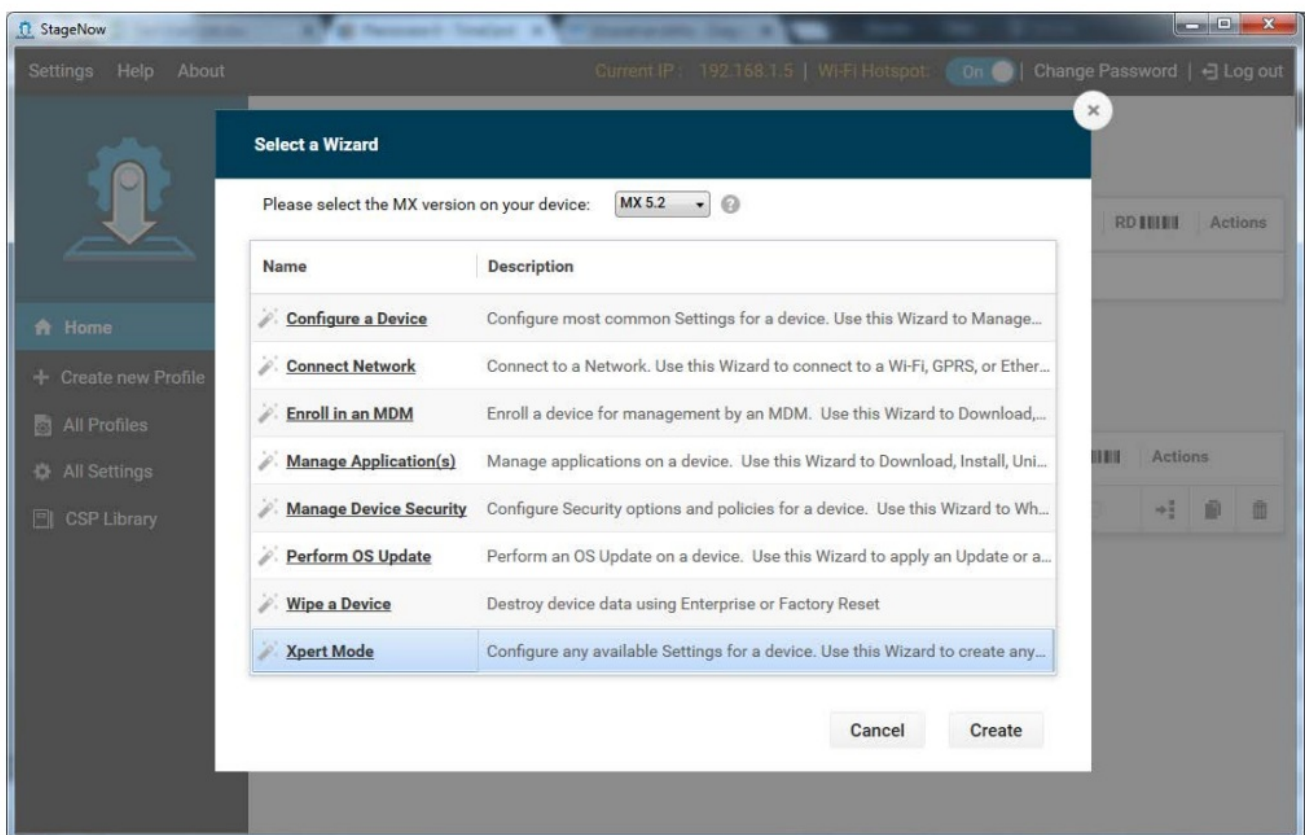
To install or update the XML configuration file:

1. Ensure that Zebra Voice is running.
2. Select Create a New Profile.
3. Select the MX version according to the MX Version on your device.

NOTE Procedures in this guide are for MX versions 4. x and 5. x and can differ from other MX versions

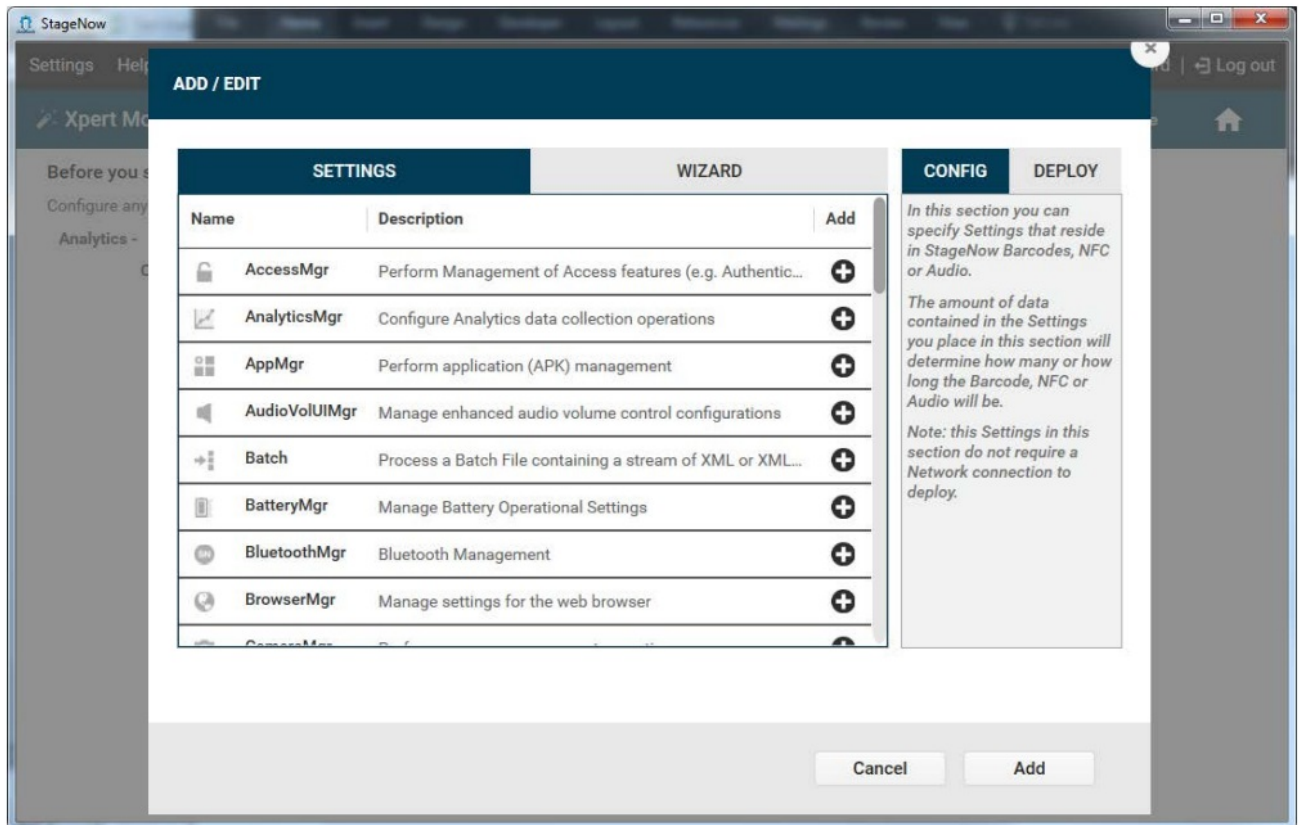
4. Select Xpert Mode.

Figure 6 Select a Wizard



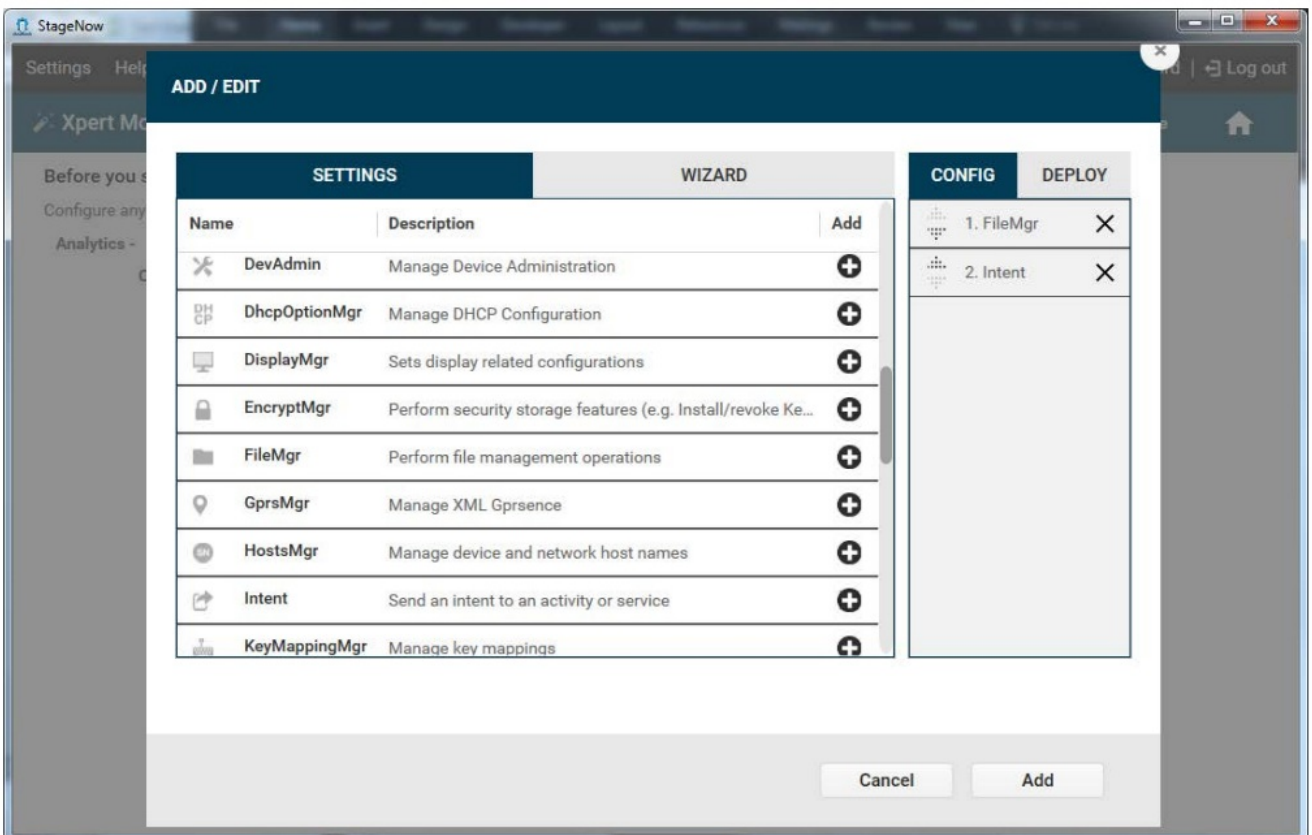
5. Select Create.
6. In the Enter Profile name field, enter the profile name.
7. Select Start.

Figure 7 Xpert Mode - Add/Edit




8. Scroll down to FileMgr and select +. FileMgr is added to the CONFIG tab.
9. Scroll down to Intent and select +. The intent is added to the CONFIG tab.

Figure 8 Xpert Mode - FileMgr and Intent

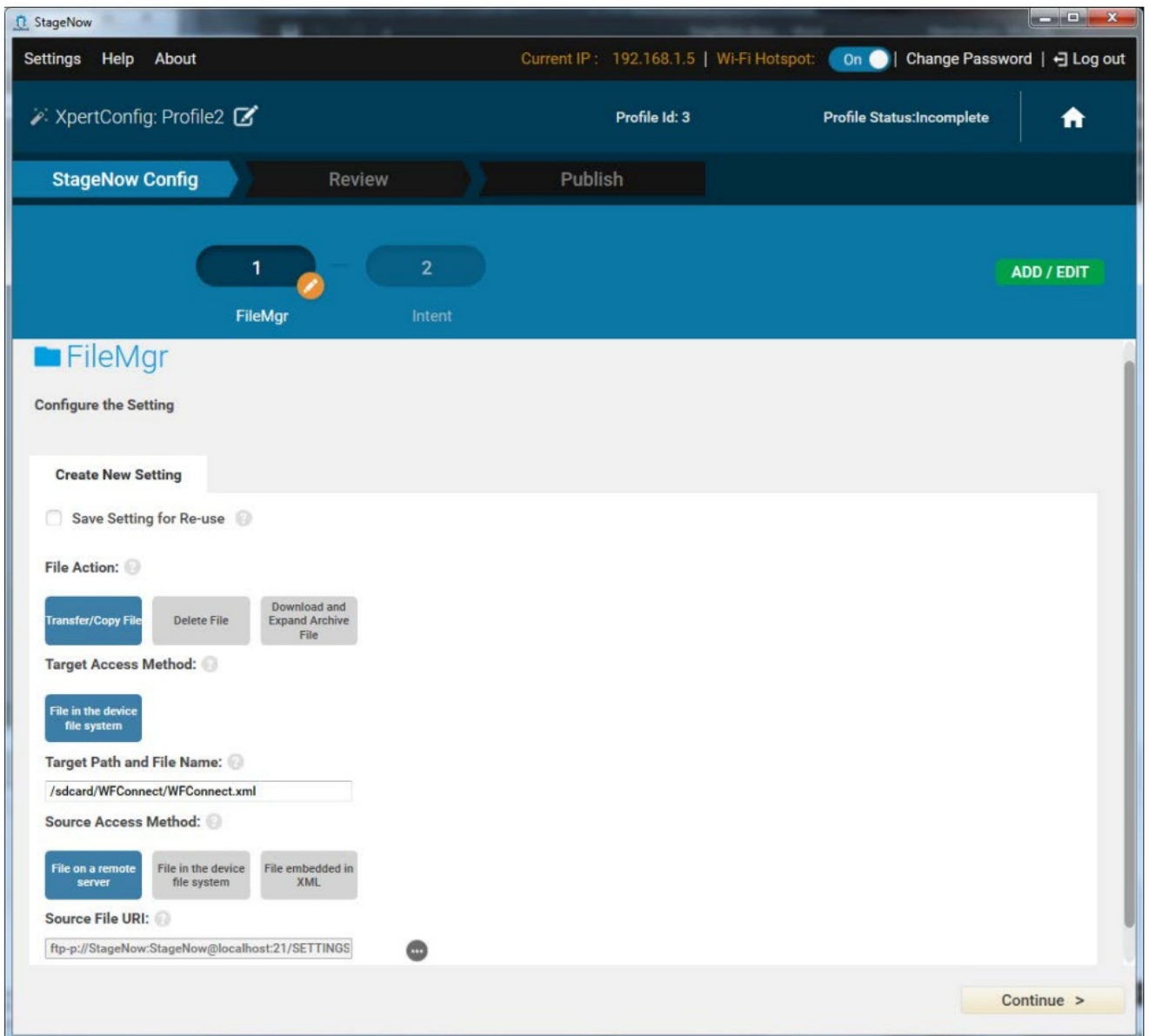


10. Select Add.
11. In the Target Path and File name field, enter [/sdcard/WFConnect/WFConnect.xml](#).
12. In the Source File Location field, select ...
13. In the Staging Server drop-down menu, select one of the following options:

- Built In  – Select and navigate to the location of the APK file and staging server configuration.
- External – Enter the source path and file name.

14. Select OK

Figure 9 Xpert Mode - FileMgr



15. Select Continue.

16. Select StartActivity

17. Set the following values:

Figure 10 Xpert Mode - FileMgr

StageNow

Settings Help About

Current IP : 192.168.1.5 | Wi-Fi Hotspot: On | Change Password | Log out

XpertConfig: Profile2 Profile Id: 3 Profile Status: Incomplete

StageNow Config Review Publish

1 FileMgr 2 Intent ADD / EDIT

Action:

StartActivity StartService Broadcast

Android Action Name: wfc.voice.ACTION_NEW_CONFIG

MIME Type:

Package Name:

Class Name:

URI:

File:

Extra 0 Type: String

Extra 0 Name: profile_uri

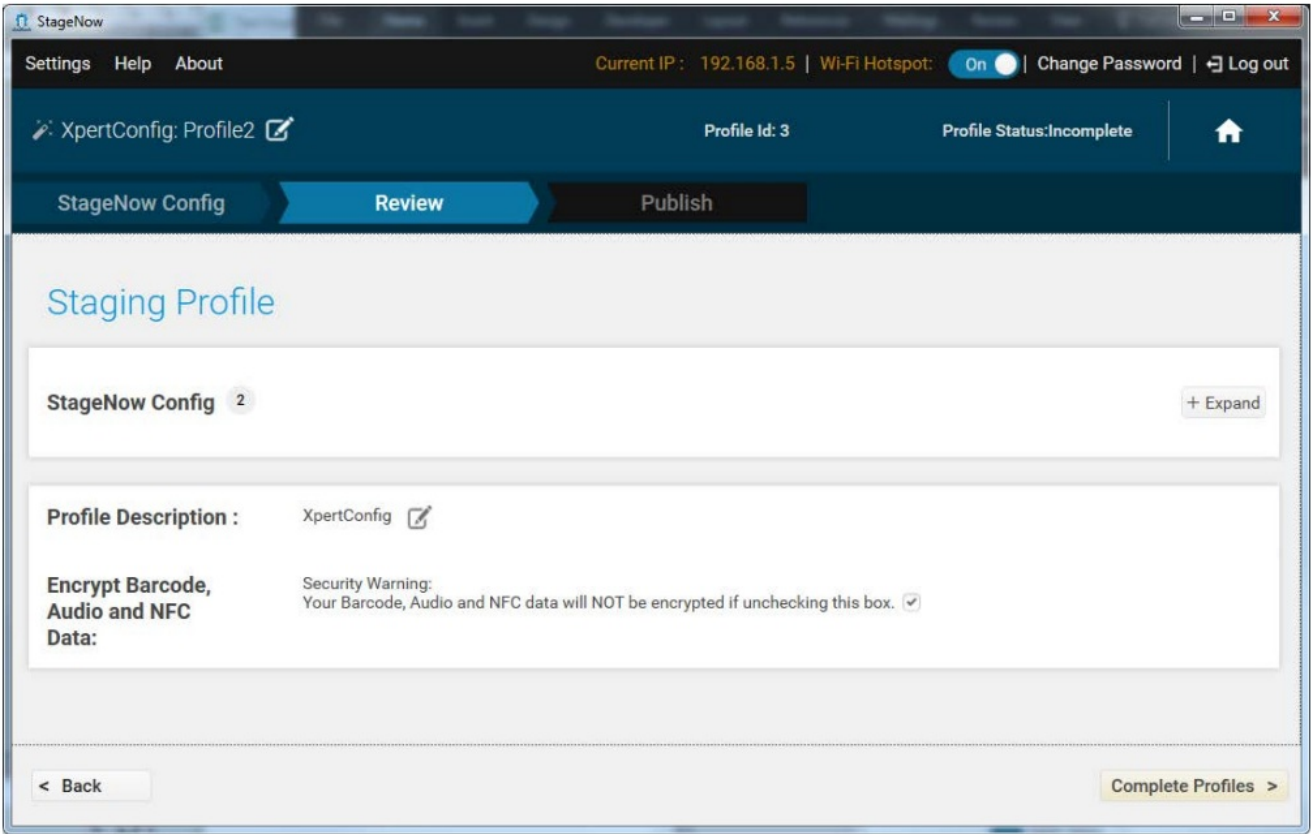
Extra 0 Value: /sdcard/WFConnect/WFConnect.xml

< Back Continue >

- In the Android action name field, enter wfc. voice.ACTION_NEW_CONFIG.
- From the Extra 0 Type drop-down menu, select String.
- In the Extra 0 Name field, enter profile_uri.
- In the Extra 0 Value field, enter [/sdcard/WFConnect/WFConnect.xml](#).


18. Select Continue.

Figure 11 Xpert Mode - Staging Profile



- 19. From the Staging Profile page, select Complete Profiles.
- 20. After the XML configuration file update is complete, remove the file from the SD card on the device.

Documents / Resources

 <div>WORKCLOUD COMMUNICATION Voice Client</div> <div>Configuration Guide for StageNow</div>	<p>ZEBRA Workcloud Communication Voice Client [pdf] User Guide</p> <p>Workcloud Communication Voice Client, Communication Voice Client, Voice Client, Client</p>
---	--

References

- [StageNow - Zebra Technologies TechDocs](#)
- [User Manual](#)

[Manuals+](#), [Privacy Policy](#)

This website is an independent publication and is neither affiliated with nor endorsed by any of the trademark owners. The "Bluetooth®" word mark and logos are registered trademarks owned by Bluetooth SIG, Inc. The "Wi-Fi®" word mark and logos are registered trademarks owned by the Wi-Fi Alliance. Any use of these marks on this website does not imply any affiliation with or endorsement.