



WBA Open Roaming on Zebra Android Devices User Guide

[Home](#) » [ZEBRA](#) » WBA Open Roaming on Zebra Android Devices User Guide 

WBA Open Roaming on Zebra Android Devices



Contents

- [1 Copyright](#)
- [2 Terms of Use](#)
- [3 Introduction](#)
- [4 Supported Zebra Devices](#)
- [5 Open Roaming Identity Providers List](#)
- [6 Connecting a Cisco Open Roaming Profile with a Zebra Device](#)
- [7 Open Roaming Configuration on a Cisco Network](#)
- [8 References and Configuration Guides](#)
- [9 Customer Support](#)
- [10 Documents / Resources](#)
 - [10.1 References](#)

Copyright

2024/01/05

ZEBRA and the stylized Zebra head are trademarks of Zebra Technologies Corporation, registered in many jurisdictions worldwide. All other trademarks are the property of their respective owners. ©2023 Zebra Technologies Corporation and/or its affiliates. All rights reserved.

Information in this document is subject to change without notice. The software described in this document is furnished under a license agreement or nondisclosure agreement. The software may be used or copied only in

accordance with the terms of those agreements.

For further information regarding legal and proprietary statements, please go to:

SOFTWARE: zebra.com/linkoslegal.

COPYRIGHTS: zebra.com/copyright.

PATENTS: ip.zebra.com.

WARRANTY: zebra.com/warranty.

END USER LICENSE AGREEMENT: zebra.com/eula.

Terms of Use

Proprietary Statement

This manual contains proprietary information of Zebra Technologies Corporation and its subsidiaries ("Zebra Technologies"). It is intended solely for the information and use of parties operating and maintaining the equipment described herein. Such proprietary information may not be used, reproduced, or disclosed to any other parties for any other purpose without the express, written permission of Zebra Technologies.

Product Improvements

Continuous improvement of products is a policy of Zebra Technologies. All specifications and designs are subject to change without notice.

Liability Disclaimer

Zebra Technologies takes steps to ensure that its published Engineering specifications and manuals are correct; however, errors do occur. Zebra Technologies reserves the right to correct any such errors and disclaims liability resulting therefrom.

Limitation of Liability

In no event shall Zebra Technologies or anyone else involved in the creation, production, or delivery of the accompanying product (including hardware and software) be liable for any damages whatsoever (including, without limitation, consequential damages including loss of business profits, business interruption, or loss of business information) arising out of the use of, the results of use of, or inability to use such product, even if Zebra Technologies has been advised of the possibility of such damages. Some jurisdictions do not allow the exclusion or limitation of incidental or consequential damages, so the above limitation or exclusion may not apply to you.

Introduction

Open Roaming™, a trademarked specification of the Wireless Broadband Alliance (WBA), brings together Wi-Fi network providers and identity providers in a global roaming federation that allows wireless devices to connect automatically and securely to Open Roaming-enabled networks across the globe.

Under WBA guidance, the Open Roaming federation enables end users to connect to networks managed by Access Network Providers (ANP) such as airports, shopping malls, operators, hospitality centers, sports venues, corporate offices, and municipalities, while using credentials managed by Identity Providers (IDP) such as operators, internet providers, social media providers, device manufacturers, and cloud providers.

Open Roaming is based on the industry standards Wi-Fi Alliance Passpoint (Hotspot 2.0) and RadSec protocol, which ensure end-to-end security. Passpoint protocol ensures enterprise-grade wireless security supporting various EAP authentication methods.

Using the Passpoint Roaming Consortium Organization Identifiers (RCOIs), Open Roaming supports both settlement-free use cases where free Wi-Fi is offered to end users, as well as settled, or paid, use cases. The settlement-free RCOI is 5A-03-BA-00-00, and the settled is BA-A2-D0-xx-xx, for example BA-A2- D0-00-00. Different bits in the RCOI octets set various policies, such as Quality of Service (QoS), Level of Assurance (LoA), Privacy, and ID-type.

For more information, go to the Wireless Broadband Alliance Open Roaming website:
<https://wballiance.com/openroaming/>

Supported Zebra Devices

All Zebra devices running Android 13 and above support this functionality.

- TC21, TC21 HC
- TC26, TC26 HC
- TC22
- TC27
- TC52, TC52 HC
- TC52x, TC52x HC
- TC57
- TC57x
- TC72
- TC77
- TC52AX, TC52AX HC
- TC53
- TC58
- TC73
- TC78
- ET40
- ET45
- ET60
- HC20
- HC50
- MC20
- RZ-H271
- CC600, CC6000
- WT6300

For the complete product list go to <https://www.zebra.com/us/en/support-downloads.html>

Open Roaming Identity Providers List

To connect to an Open Roaming network, a device must be configured with an Open Roaming profile installed from the WBA website, from the respective application stores (Google Play or App Store), or directly from the web. Zebra devices support Open Roaming profile download and installation from any identity provider.

Installation saves a Wi-Fi Passpoint profile on the device, which includes the required credentials to connect to any OpenRoaming network. For more information, go to the WBA OpenRoaming signup page:
<https://wballiance.com/openroaming-signup/>



his page lists the Open Roaming™ LIVE supporters. Zebra Technologies actively supports and participates as an Open Roaming federation member.

OpenRoaming™ LIVE Supporters

OpenRoaming™ is supported by a federation of networks and identity providers, allowing users to join any network managed by a federation member.

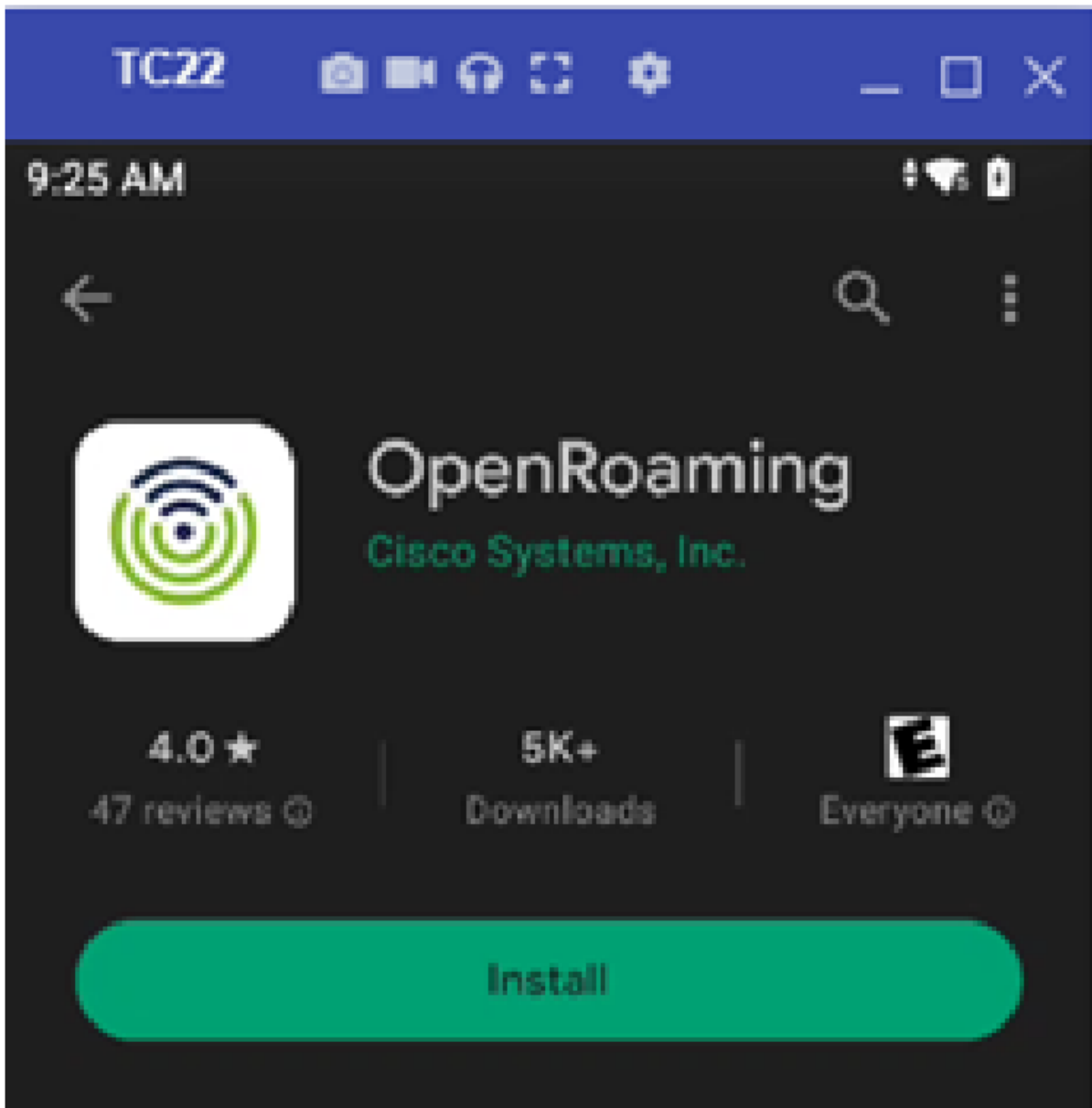
[JOIN TODAY](#)



Connecting a Cisco Open Roaming Profile with a Zebra Device

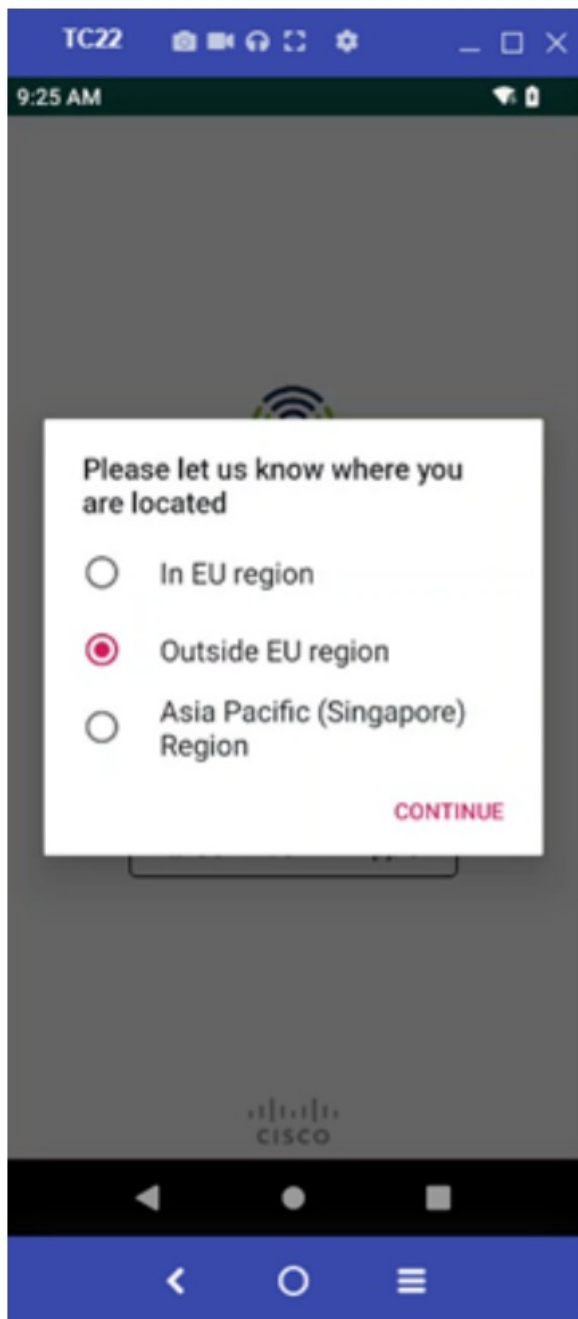
1. Connect the Zebra device to any Internet-enabled Wi-Fi or use a cellular SIM with an active data connection on the device.
2. Log in to the Google Play store with Google credentials and install the OpenRoaming application:

https://play.google.com/store/apps/details?id=com.cisco.or&hl=en_US&gl=US

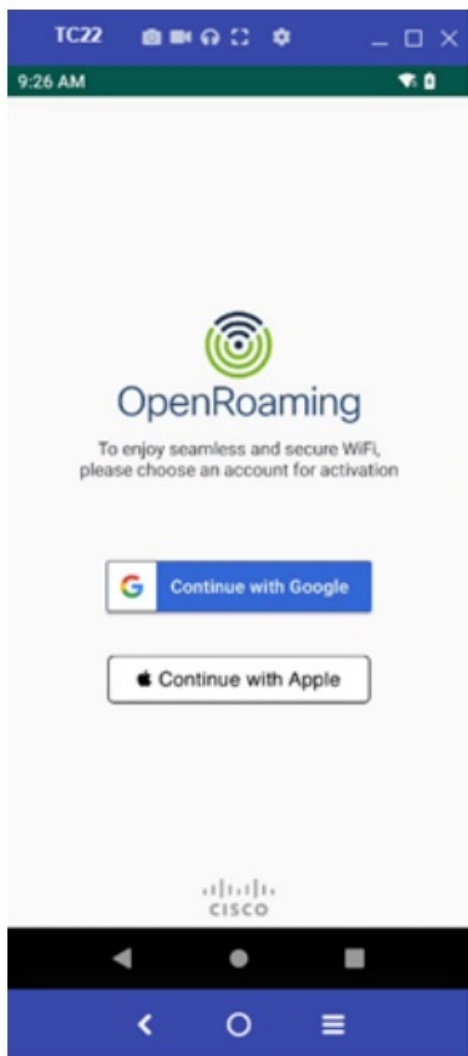


Connecting a Cisco Open Roaming Profile with a Zebra Device

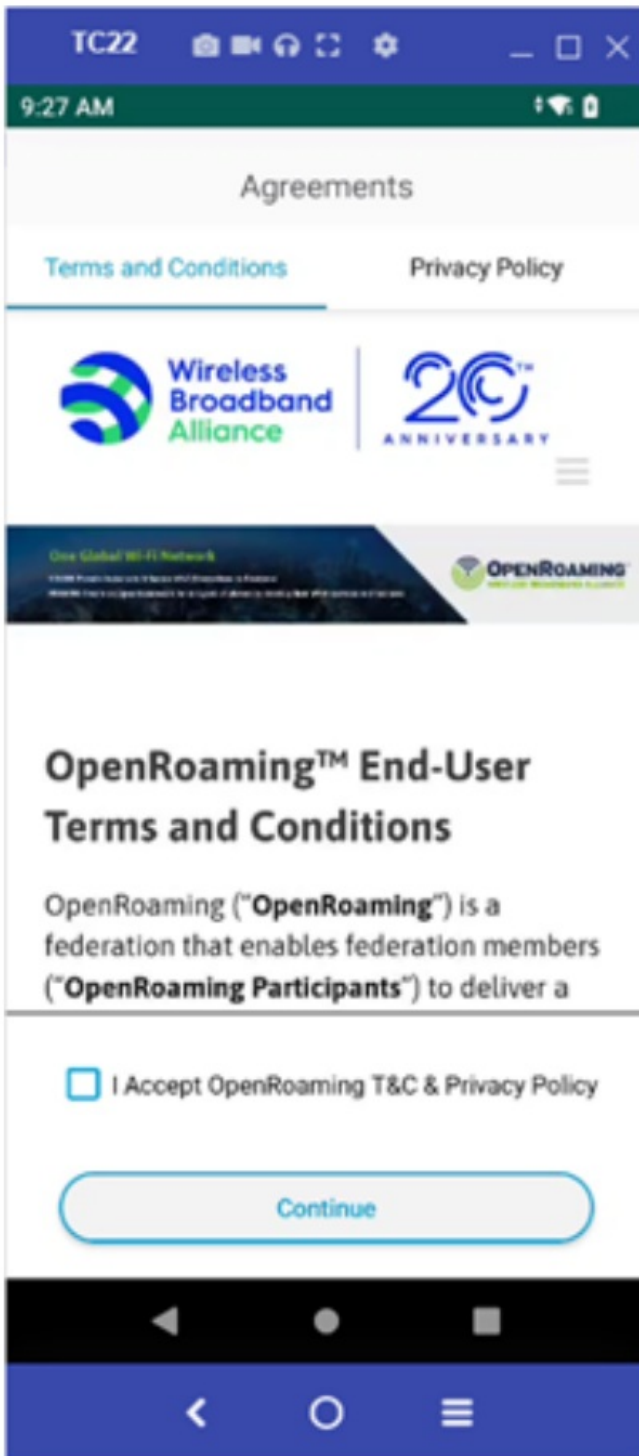
- When installation completes, open the OpenRoaming application, select an option based on the AP location, and tap Continue. For example, select Outside EU region if you are connecting to an AP in the US.



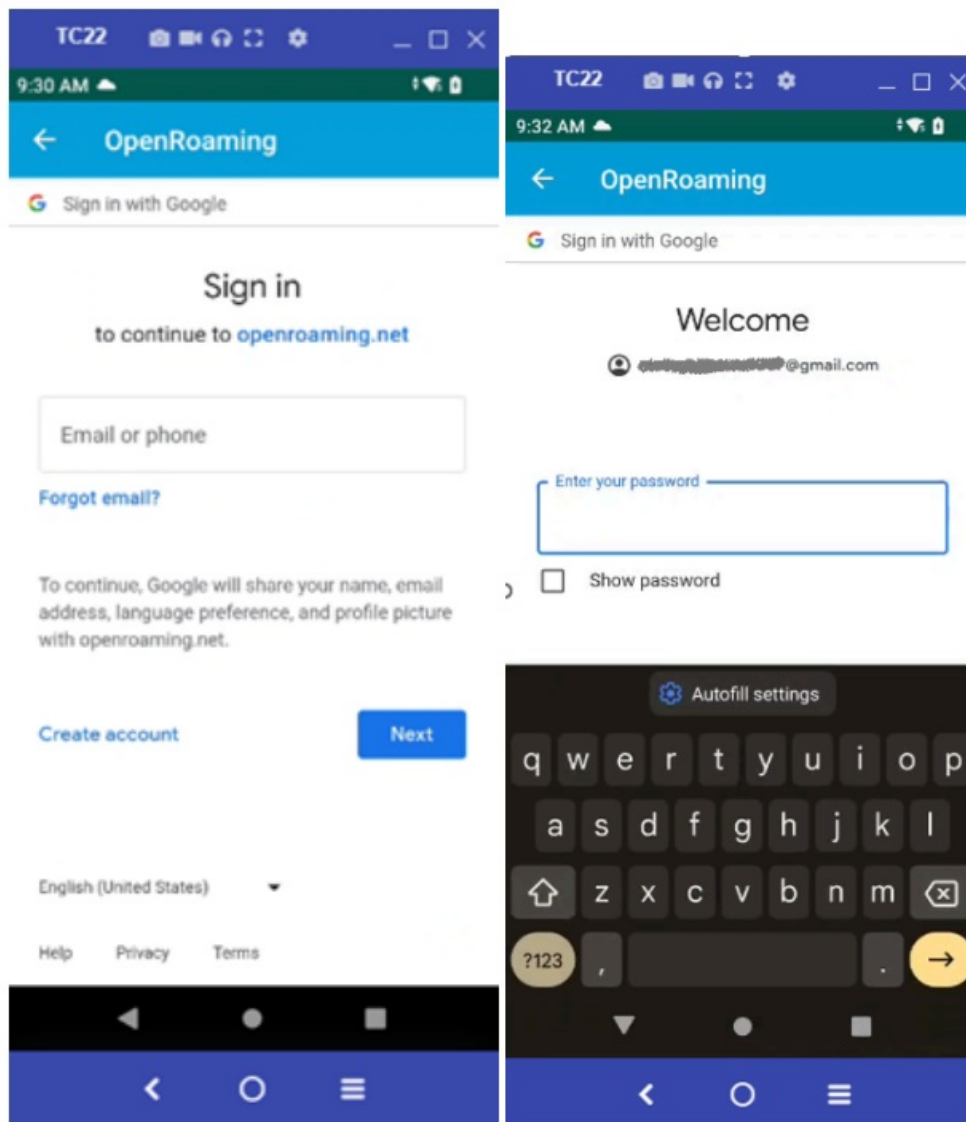
4. Select whether to continue with a Google ID or an Apple ID



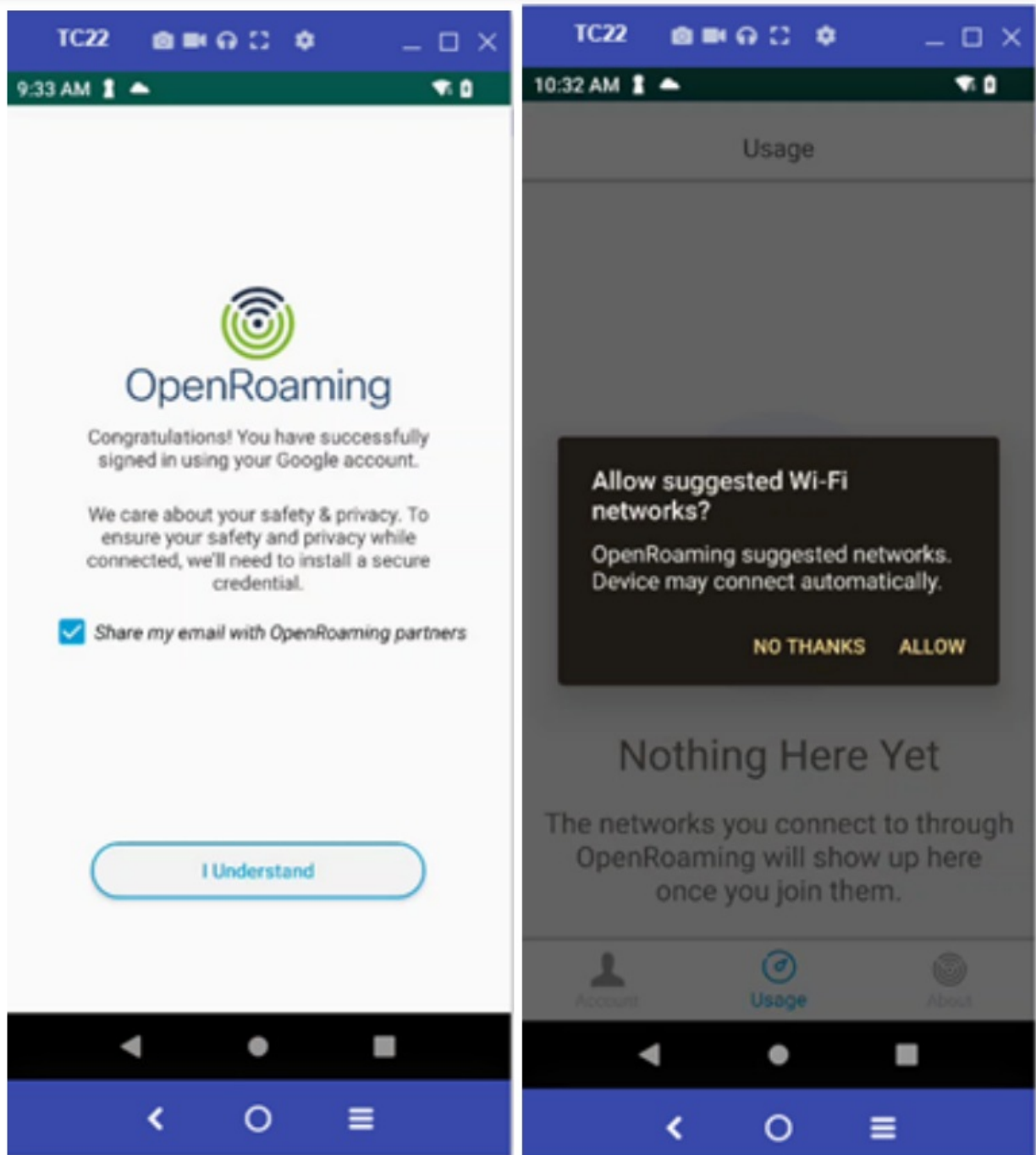
5. Select the I Accept OpenRoaming T&C & Privacy Policy checkbox and tap Continue.



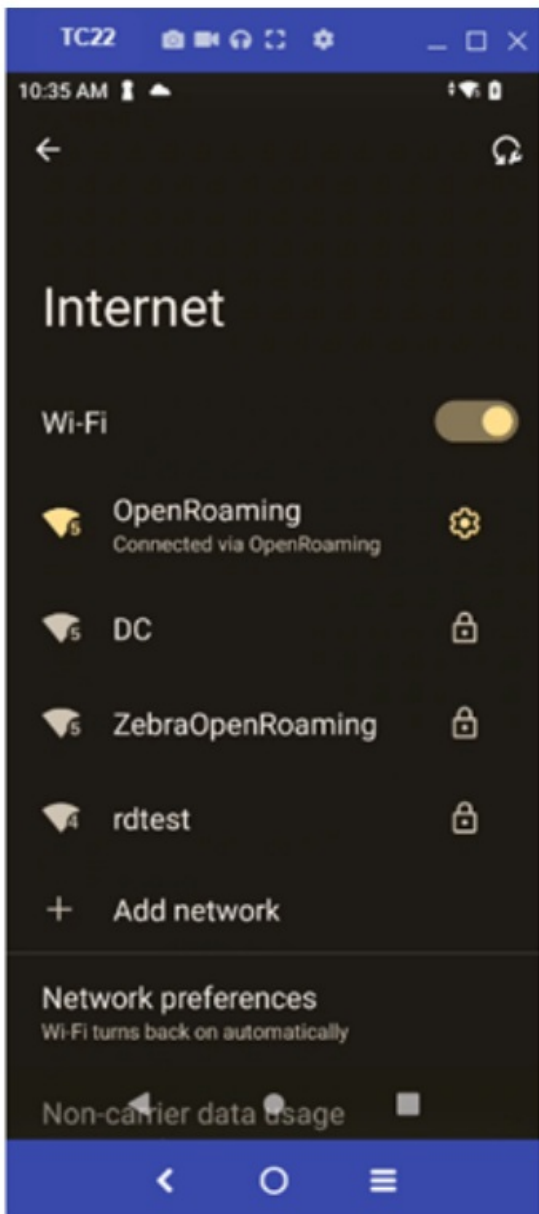
6. Enter the Google ID and credentials for identity verification.



7. Tap Allow to allow suggested Wi-Fi networks. If using a cellular connection, the Zebra device autoconnects to the Open Roaming WLAN profile.



8. If not using a cellular connection, go to Wi-Fi settings. The Zebra device auto-connects to the OpenRoaming SSID in the Wi-Fi scan list when you disconnect from the current WLAN profile.



Open Roaming Configuration on a Cisco Network

To host Open Roaming services through Cisco Spaces, the Cisco infrastructure requires the following.

- An active Cisco Spaces account
- A Cisco wireless network with either a Cisco AireOS or Cisco IOS wireless controller supported
- The wireless network added to the Cisco Spaces account
- A Cisco Spaces Connector

References and Configuration Guides

- Cisco Spaces
 - https://www.cisco.com/c/en_ca/solutions/enterprise-networks/dna-spaces/index.html
- Downloading and Deploying Cisco Spaces
 - https://www.cisco.com/c/en/us/td/docs/wireless/spaces/connector/2-x/config/b_connector/m_ova.html
- Cisco Spaces Setup Guide


- <https://spaces.cisco.com/setupguide/>
- OpenRoaming Configuration on Cisco WLC
 - https://www.cisco.com/c/en/us/td/docs/wireless/controller/9800/17-3/config-guide/b_wl_17_3_cg/m_hotspot-2.html1

Customer Support



www.zebra.com



Documents / Resources

	<p>ZEBRA WBA Open Roaming on Zebra Android Devices [pdf] User Guide WBA Open Roaming on Zebra Android Devices, Open Roaming on Zebra Android Devices, Zebra Android Devices, Android Devices</p>
---	---

References

-  [Setupguide – Cisco Spaces](#)
-  [Cisco Spaces \(Formerly Cisco DNA Spaces\) - Smart Buildings Platform - Cisco](#)
-  [Support and Downloads | Zebra](#)
- [User Manual](#)

[Manuals+](#), [Privacy Policy](#)

This website is an independent publication and is neither affiliated with nor endorsed by any of the trademark owners. The "Bluetooth®" word mark and logos are registered trademarks owned by Bluetooth SIG, Inc. The "Wi-Fi®" word mark and logos are registered trademarks owned by the Wi-Fi Alliance. Any use of these marks on this website does not imply any affiliation with or endorsement.