




ZEBRA VisibilityIQ GPS Data Collection User Manual

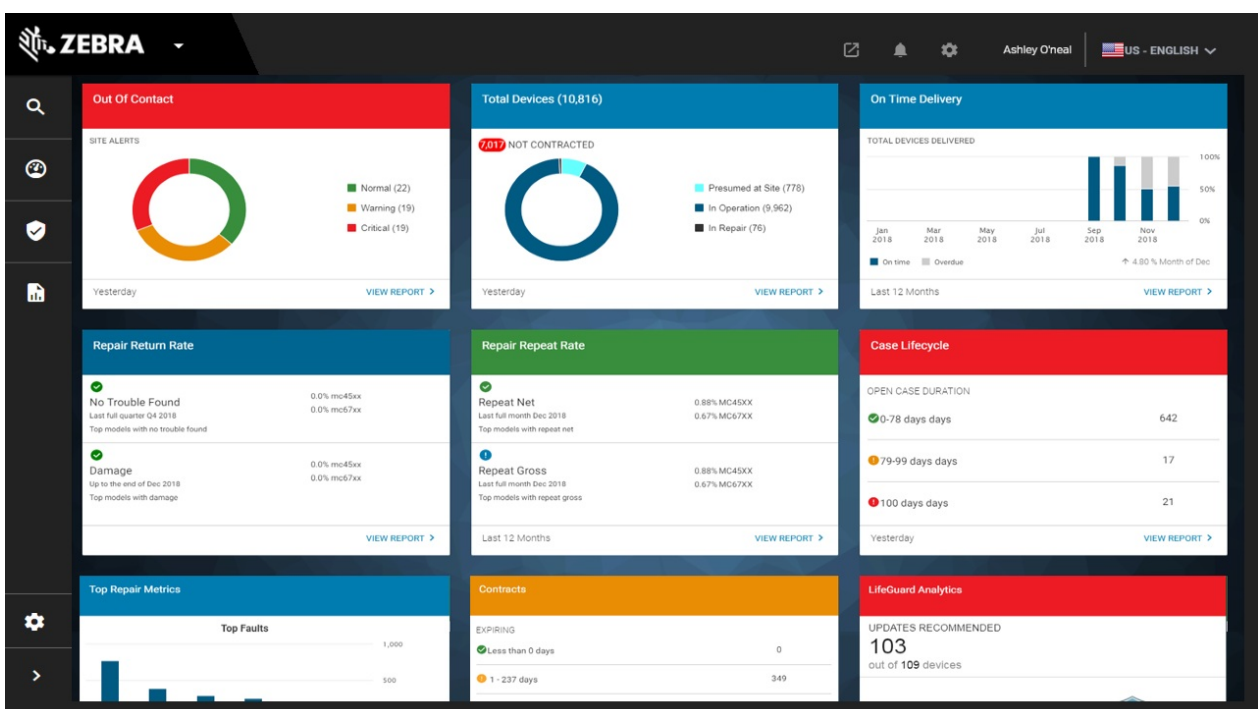
[Home](#) » [ZEBRA](#) » ZEBRA VisibilityIQ GPS Data Collection User Manual 

Contents

- [1 ZEBRA VisibilityIQ GPS Data Collection](#)
- [2 Enable GPS Data Collection](#)
 - [2.1 Settings > Location](#)
- [3 Documents / Resources](#)
- [4 Related Posts](#)



ZEBRA VisibilityIQ GPS Data Collection



Enable GPS Data Collection

ZDS agent is preloaded to Zebra Android devices to collect and transmit device metrics data used in VisibilityIQ Foresight (VIQF) service. GPS data collection is disabled by default to protect customers' privacy. However, if the customer agrees to share the GPS data, e.g., to use the data in VIQF service, GPS data collection with ZDS can be enabled and configured to set the collection interval per the customer's requirements. The data transmission interval is also configurable at the ZDS agent level and all data collected will be transmitted at the same frequency.

There are 2 options to enable and configure GPS data collection as described below

Option 1

Enable and configure GPS using configuration barcodes

This option requires access to the devices and manual procedures. Therefore, it's suitable for scenarios with a small number of devices to be configured.

Customers can use a barcode config file to enable GPS data collection.

Procedure:

1. Enable network connectivity on the device (WWAN or WLAN based)
2. Ensure the device can reach the Internet (e.g. open the browser to google.com)
3. Open StageNow on the device, and scan in the appropriate barcodes
4. Verify the success message in StageNow
5. The device should now be collecting and sending GPS data

Option 2

Enable and configure GPS using an XML file

In order to enable and configure GPS settings on a large number of devices, a configuration XML file can be deployed via a tool authorized with the Zebra MX framework. Typically, these tools are MDMs, test tools, or StageNow.

Customers can deploy the XML file via MDM or other tools per their existing procedure.

The customer also needs to enable the GPS functionality on devices as below:

Settings > Location

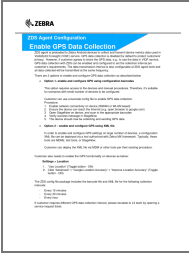
1. "Use Location" (Toggle button – ON)
2. Click "Advanced" > "Google Location Accuracy" > "Improve Location Accuracy" (Toggle button – ON)

The ZDS config file package includes the barcode file and XML file for the following collection intervals:

- Every 15 minutes
- Every 30 minutes
- Every hour

If the customer requires different GPS data collection interval, please escalate to the L3 team by opening a service request ticket.

Documents / Resources

	<p>ZEBRA VisibilityIQ GPS Data Collection [pdf] User Manual VisibilityIQ GPS Data Collection, VisibilityIQ, GPS Data Collection</p>
---	---