



# ZEBRA TC53 Trigger Handle Installation Guide

[Home](#) » [ZEBRA](#) » ZEBRA TC53 Trigger Handle Installation Guide 

## Contents

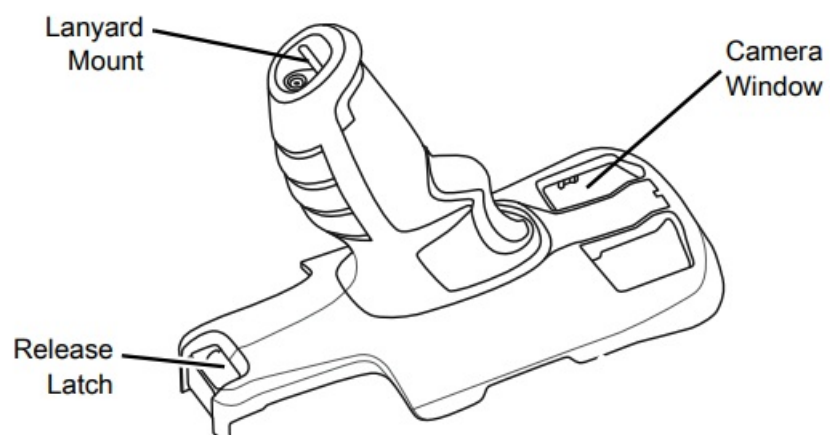
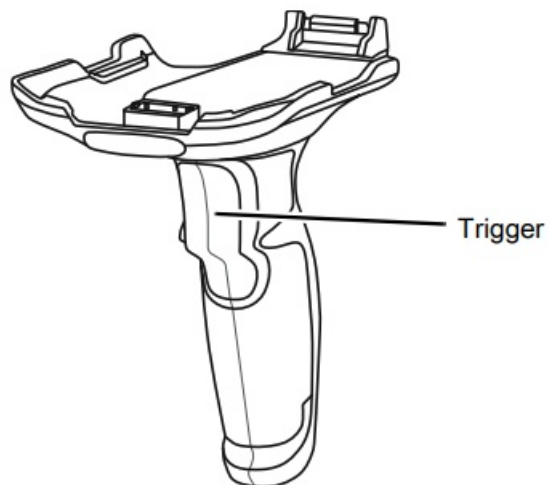
- [1 ZEBRA TC53 Trigger Handle](#)
- [2 Features](#)
- [3 Rugged Boot Installation](#)
- [4 Device Installation](#)
- [5 Charging](#)
- [6 Optional Lanyard Installation](#)
- [7 Documents / Resources](#)
  - [7.1 References](#)
- [8 Related Posts](#)



**ZEBRA TC53 Trigger Handle**

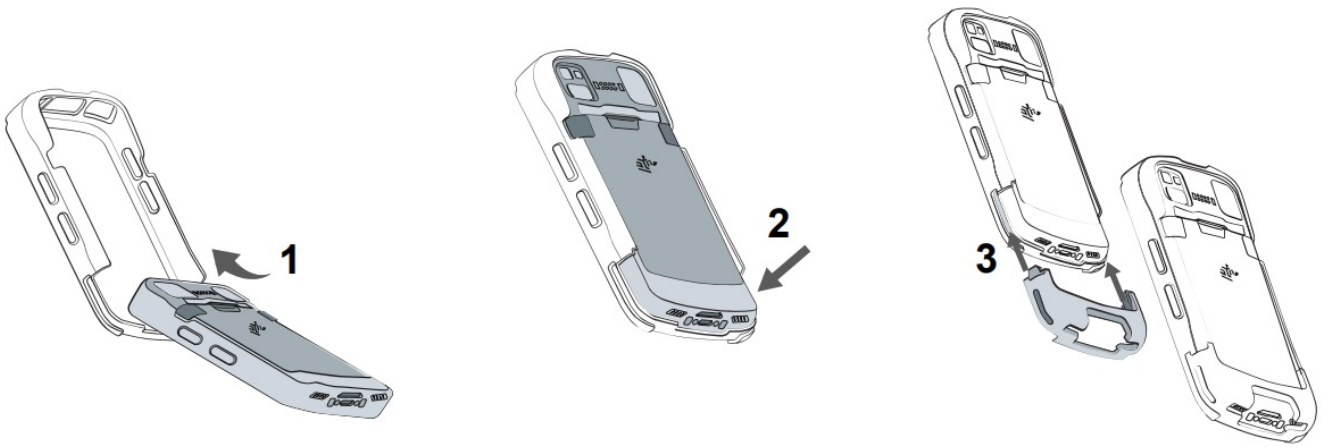


## Features

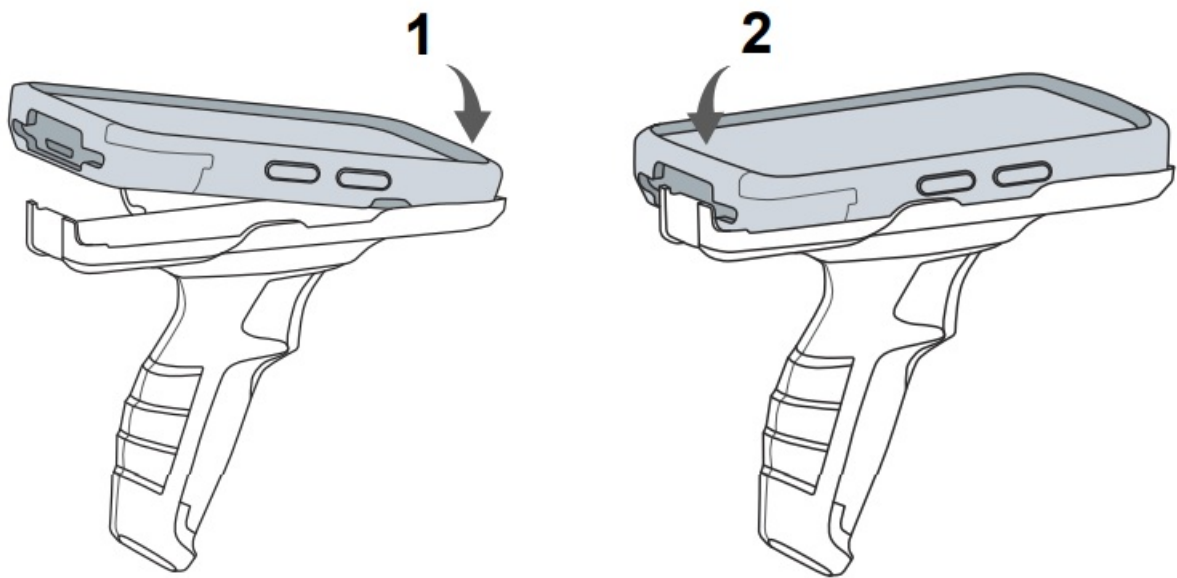


## Rugged Boot Installation

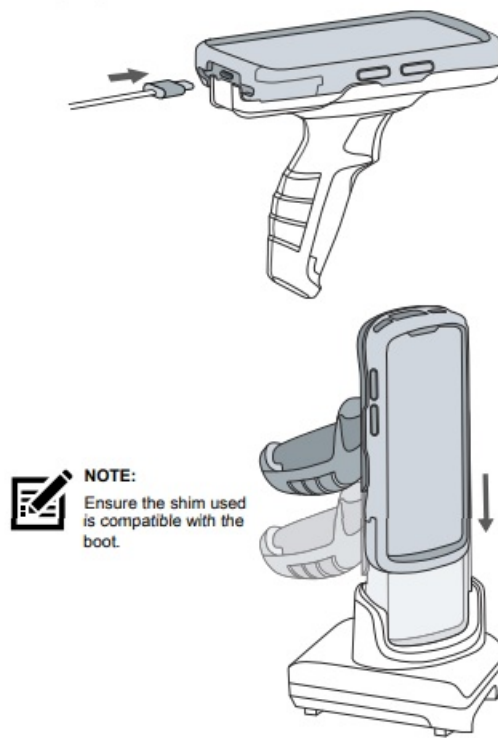
**NOTE:** Install the boot prior to trigger installation. If a hand strap is installed, remove it prior to installing the rugged boot and trigger handle.



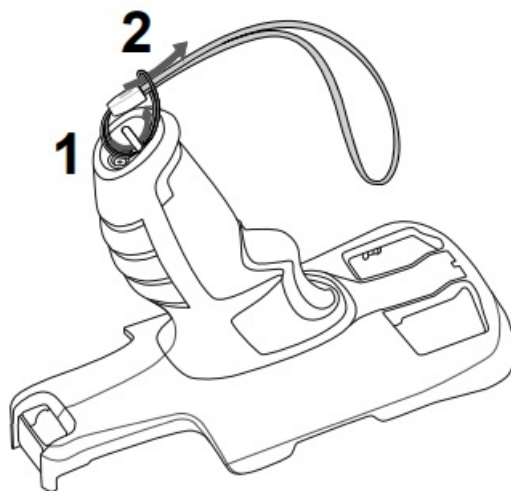
## Device Installation



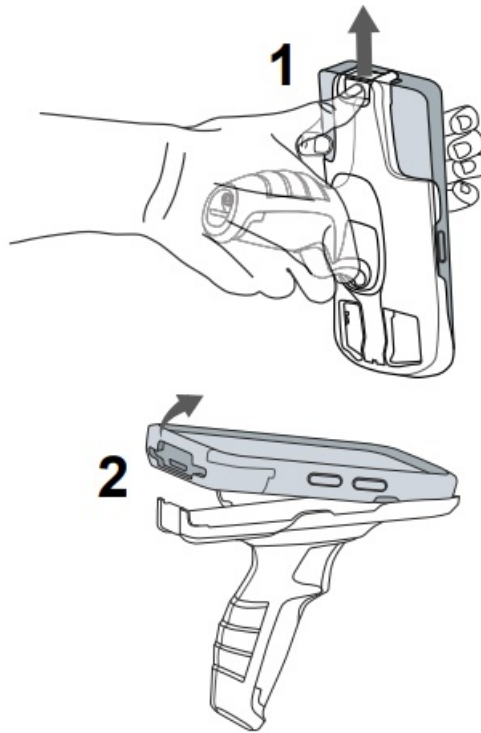
## Charging



## Optional Lanyard Installation



## Removal



Zebra Technologies | 3 Overlook Point | Lincolnshire, IL 60069 USA  
[www.zebra.com](http://www.zebra.com)

ZEBRA and the stylized Zebra head are trademarks of Zebra Technologies Corp., registered in many jurisdictions worldwide. All other trademarks are the property of their respective owners. © 2022 Zebra Technologies Corp. and/or its affiliates. All rights reserved.

## Documents / Resources

	<a href="#">ZEBRA TC53 Trigger Handle</a> [pdf] Installation Guide TC53 Trigger Handle, TC53, TC58, Trigger Handle, Handle
---	---

## References

-  [Zebra Technologies | Visible. Connected. Optimized.](#)