



ZEBRA MC9450 Series Handheld Mobile Computer Installation Guide

[Home](#) » [ZEBRA](#) » ZEBRA MC9450 Series Handheld Mobile Computer Installation Guide 



ZEBRA

MC9400/MC9450 Series
Configurations & Accessories Guide



©2024 ZIH Corp and/or its affiliates. All rights reserved. Zebra and the stylized Zebra head are trademarks of ZIH Corp registered in many jurisdictions worldwide. All other trademarks are the property of their respective owners.

Contents

- [1 Cradle options](#)
- [2 Chargers and batteries](#)
- [3 Other charge accessories](#)
- [4 Softgoods for gun configurations](#)
- [5 Other accessories](#)
- [6 Documents / Resources](#)
 - [6.1 References](#)

Cradle options

Single slot cradle



Single Slot Cradle w/Spare Battery Charger:

CRD-MC93-2SUCHG-01: Single slot USB cradle, w/spare battery charger, charges one device and one spare battery.

Allows USB communication to the device with an additional USB-C cable.

Requires: Power supply PWR-BGA12V50W0WW, DC line cord CBL-DC-388A1-01 and country specific 3 wire AC line cord.

Main features

- USB communication
- Fast-charge while using MC94/MC93 PP+ batteries
- Charges one device and one spare battery
- Compatible with Level V and Level VI power supplies
- NOT COMPATIBLE WITH MC92

Additional accessories for single slot cradle

CBL-TC2X-USBC-01 or CBL-TC5X-USBC2A-01 USB-C cable for single slot cradle and cable cup



PWR-BGA12V50W0WW

Level VI AC/DC power supply (brick, replacement for PWRS-14000-148R)

AC Input: 100-240V, 2.4A

DC Output: 12V, 4.16A, 50W

Requires: DC line cord and country specific grounded AC line cord.



CBL-DC-388A1-01

DC line cord for running the single slot cradles or battery chargers from a single Level VI power supply PWR-BGA12V50W0WW, Level VI replacement for PWRS-14000-148R.



23844-00-00R

US AC line cord, 7.5 feet long, grounded, three wire for power supplies.

Multi-slot ShareCradles



Multi-Slot Cradle options:

CRD-MC93-4SCHG-01: 4Slot charge only cradle, charges up to four devices.

CRD-MC93-4SETH-01: 4Slot Ethernet cradle, charges up to four devices and provides Ethernet communication.

All Cradles Require: Power supply PWR-BGA12V108W0WW,
DC cord CBL-DC-381A1-01 and country specific 3 wire AC line cord.

Main features

- Charge only and Ethernet ShareCradle configurations
- Fast-charge while using MC94/MC93 PP+ batteries
- Charges 4 devices
- Compatible with Level V and Level VI power supplies
- Desk/Wall/Rack mount options
- NOT COMPATIBLE WITH MC92

Additional accessories for multi-slot cradles



PWR-BGA12V108W0WW

Level VI AC/DC power supply (brick,
Replacement for PWRS-14000-241R)

AC Input: 100-240V, 2.8A

DC Output: 12V, 9A, 108W

Requires: DC line cord and country specific grounded AC line cord.



CBL-DC-381A1-01

DC line cord for running multi-slot cradles

from a single Level VI power supply PWRBGA12V108W0WW, Level VI replacement for PWRS-14000-241R



23844-00-00R

US AC line cord, 7.5 feet long, grounded, three wire for power supplies.



BRKT-SCRD-SMRK-01

Rack/Wall mounting bracket, allows to install any multi-slot cradle on a wall or a 19" IT rack.

Chargers and batteries

Spare battery charger options:



Main features

- 4-slot and 16-slot configurations
- Fast-charge while using MC94/MC93 PP+ batteries
- Compatible with Level V and Level VI power supplies
- Desk/Wall/Rack mount options
- NOT COMPATIBLE WITH MC92 BATTERIES

SAC-MC93-4SCHG-01: 4-slot battery charger, charges four spare batteries. Requires: Power supply PWR-BGA12V50W0WW, DC line cord CBL-DC-388A1-01 and country specific 3 wire AC line cord.

SAC-MC93-16SCHG-01: 16-slot battery charger, charges sixteen spare batteries. Requires: Power supply PWR-BGA12V108W0WW, DC cord CBL-DC-381A1-01 and country specific 3 wire AC line cord.

Accessories for battery chargers:



PWR-BGA12V50W0WW

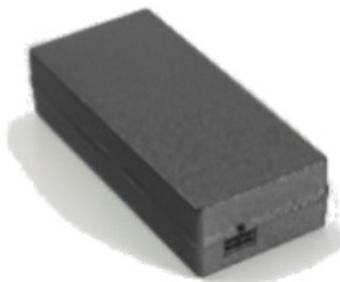
Level VI AC/DC power supply. AC Input: 100-240V, 2.4A, DC Output: 12V, 4.16A, 50W

Requires: DC line cord and country specific grounded AC line cord.



CBL-DC-388A1-01

DC line cord for running the single slot cradles or battery chargers from a single Level VI power supply PWR-BGA12V50W0WW.



PWR-BGA12V108W0WW

Level VI AC/DC Power Supply. AC Input: 100-240V, 2.8A, DC Output: 12V, 9A, 108W Requires: DC line cord and country specific grounded AC line cord.



CBL-DC-381A1-01

DC line cord for running multi-slot cradles from a single Level VI power supply PWRBGA12V108W0WW.



23844-00-00R

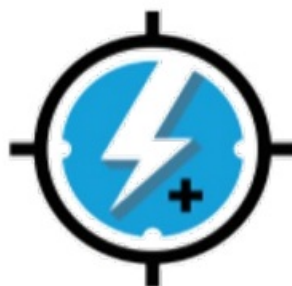
US AC line cord, 7.5 feet long, grounded, three wire for power supplies.



BRKT-SCRD-SMRK-01

Rack/Wall mounting bracket, allows to install the 16-slot battery charger or up to four 4-slot battery chargers on a wall or a 19" IT rack.

Spare battery



BTRY-MC94-BLE-01(BLE Beacon)

Power Precision+ Lithium Ion 7000mAh battery, BLE Enabled MC94XX/MC93XX Series Battery, Qualifies for special DT SW SKU pricing (SW-BLE-DT-SP-3YR or SW-BLE-DT-SP-1YR), QTY-1 Pack of 10 batteries: BTRY-MC94-BLE-10

BTRY-MC93-STN-01(Standard), BTRY-MC93-NI-01 (Non Incendive)

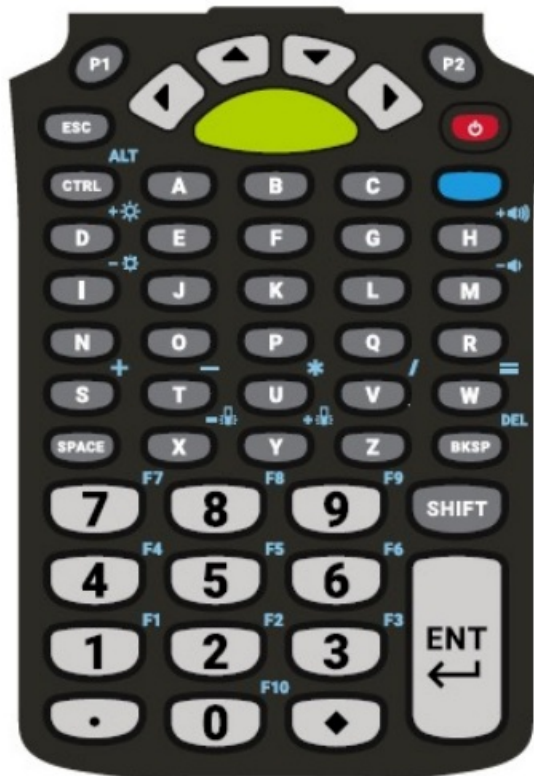
Power Precision+ Lithium Ion 7000 mAh battery, provides advanced State of Charge and State of Health, supports fast-charge while using MC94/MC93 cradles and chargers.

Pack of 10 batteries: BTRY-MC93-STN-10, BTRY-MC93-NI-10

BTRY-MC93-FZ-01 (Freezer)

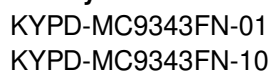
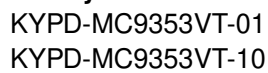
Power Precision+ Lithium Ion 5000 mAh Freezer rated (-30C) battery, provides advanced State of Charge and State of Health, supports fast-charge while using MC94/93 cradles and chargers.

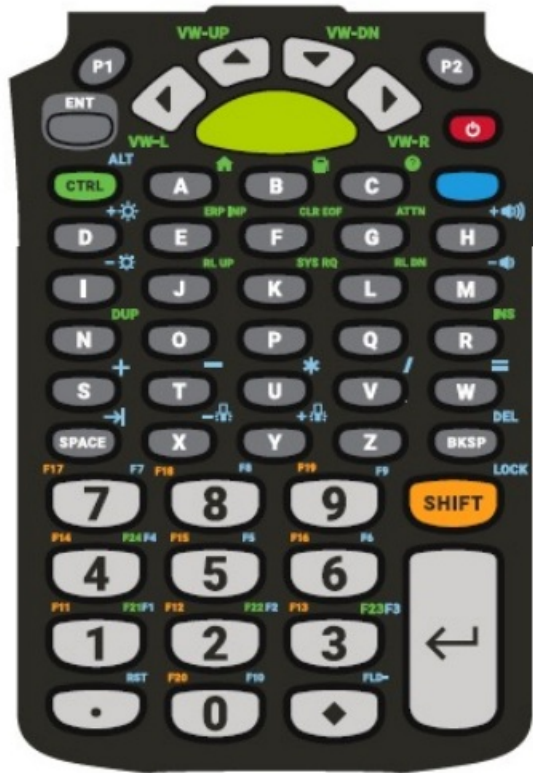
Pack of 10 batteries: BTRY-MC93-FZ-10

Field Replaceable Spare Key pads**53 Key Standard**

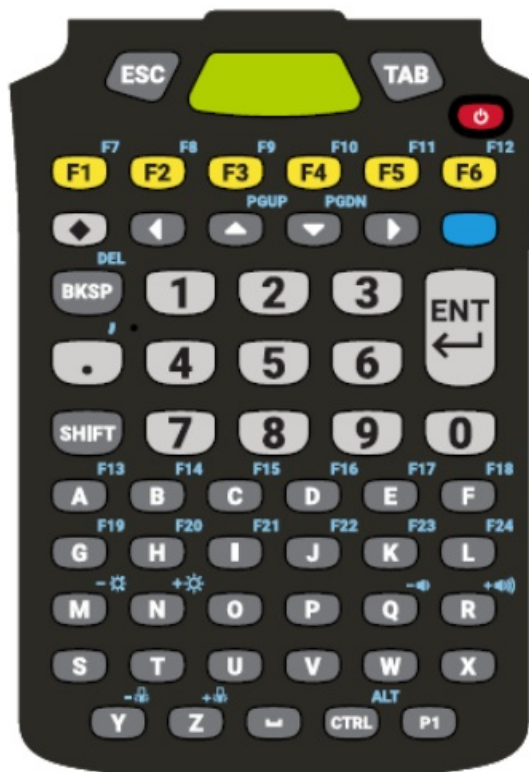
KYPD-MC9353ANR-01

KYPD-MC9353ANR-10





53 Key TE 5250
 KYPD-MC93535250-01
 KYPD-MC93535250-10



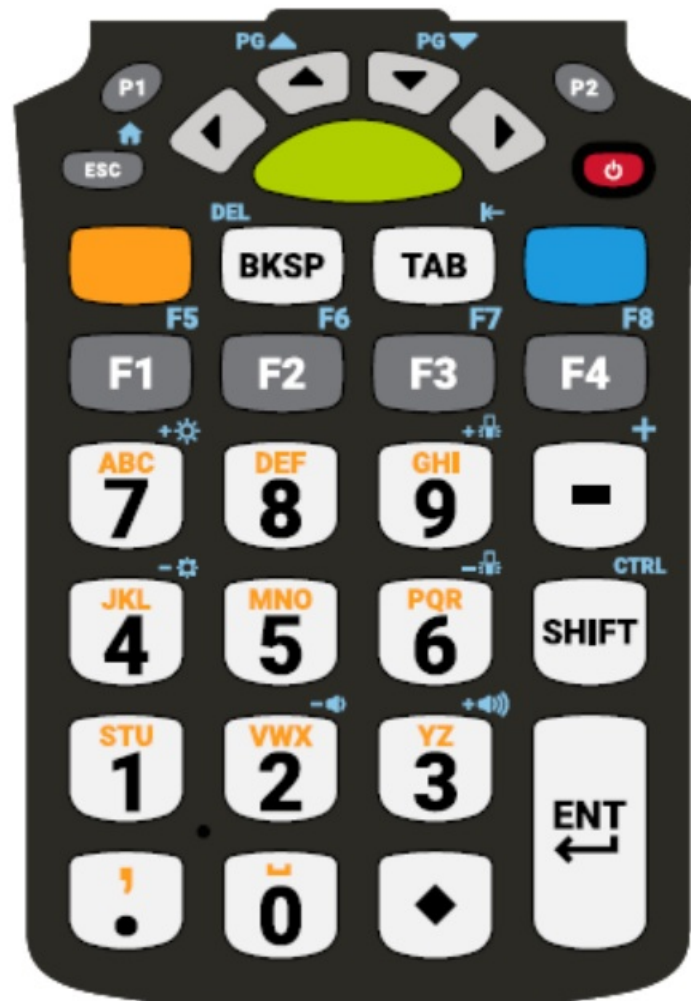
58 Key Func AN
 KYPD-MC9358ANR-01
 KYPD-MC9358ANR-10



34 Key Function

KYPD-MC9334FNR-01

KYPD-MC9334FNR-10



29 Key Function

KYPD-MC9329NMR-01

KYPD-MC9329NMR-10

Other charge accessories

Backwards compatibility



ADP-MC93-CRDCUP-01

Charge only adapter for backwards compatibility with MC9x cradles, the adapter can be installed on any MC9x single slot or multi-slot cradle (charge only or Ethernet) allowing to charge a MC93 device (the adapter does not provide USB or Ethernet communication and does not provide fast-charge).



USB charge cable



CBL-MC93-USBCHG-01: USB

cable, provides fast-charge when a MC93 PP+ battery and a wall adapter is used, it also allows USB communication to the device when connected to a PC.

Requires: CBL-TC2X-USBC-01 and Power supply PWRWUA5V12W0US

Additional accessories for USB cable



PWR-WUA5V12W0US

Level VI power supply (wall adapter) 100-240 VAC, 5V, 2.5A with US plug.

Other countries:

- Australia: PWR-WUA5V12W0AU

- Brazil: PWR-WUA5V12W0BR
- China: PWR-WUA5V12W0CN
- Europe: PWR-WUA5V12W0EU
- India: PWR-WUA5V12W0IN
- Korea: PWR-WUA5V12W0KR
- UK: PWR-WUA5V12W0GB

Softgoods for gun configurations

Holster



SG-MC9X-SHLSTG-01

Fabric holster, secures to a belt or a shoulder strap. Allows to carry the gun device on the hip or crossbody. Requires belt or shoulder strap ordered separately.

Shoulder strap

58-40000-007R Universal shoulder strap for fabric holster.



Belt for holster

11-08062-02R Universal belt for fabric holster.



Protective boot
SG-MC93-RBTG-01

Protective boot for gun configurations, protects the device from wear and tear.



Hand strap



SG-MC93-HDSTPG-01
Spare hand strap for gun configurations (pkg 1)

Other accessories

Mounting accessories



Un-powered forklift mount

Allows installing the device on a roll bar or square surface of a forklift.

Requires: Forklift holder (MNT-MC93-FLCH-01), RAM double socket arm for 1" ball (MNT-RAM-B201U) , RAM forklift clamp 2.5" max width square rail base with 1" ball (MNT-RAM-B247U25).



BRKT-SCRD-SMRK-01

Rack/Wall mounting bracket, allows to install any Multi-slot Share Cradle, the 16-slot battery charger or up to four 4-slot battery chargers on a wall or a 19" server rack.



MISC-MC93-SCRN-01

Tempered glass screen protector (Qty. 5)



SG-TC7X-STYLUS-03

Stylus with coiled tether (Qty. 3).

Made of conductive carbon-filled plastic material, optimized for enterprise durability.



HS3100-OTH

HS3100 Rugged Bluetooth headset with over-the-head headband.

Included HS3100 boom module and HSX100 OTH headband module.

HS3100-BTN-L

HS3100 Rugged Bluetooth headset with behind-the-neck headband (left).

Included HS3100 boom module and HSX100 BTN-L headband module.

Country specific AC grounded line cords


Part Number	Description
23844-00-00R	AC line cord, 7.5 feet long, grounded, three wire. Associated Country: US
50-16000-217R	AC Line Cord, 1.9M, grounded, three wire, AS 3112 plug. Associated Country: Australia, New Guinea
50-16000-218R	AC Line Cord, 1.8M, grounded, three wire, NEMA 1-15P plug. Associated Country: Japan
50-16000-219R	AC Line Cord, 1.8M, three wire, grounded BS1363 plug. Associated Countries: Hong Kong, Iraq, Malaysia, Singapore, United Kingdom
50-16000-220R	AC Line Cord, 1.8M, grounded, three wire CEE 7/7plug. Associated Countries: Europe, Abu Dhabi, Bolivia, Dubai, Egypt, Iran, Korea, Russia, Vietnam
50-16000-256R	AC Line Cord, 1.8M, grounded, three wire, CEE7/7 plug. Associated Country: Korea
50-16000-257R	AC Line Cord, 1.8M, grounded, three wire, IEC 60320 C13 plug. Associated Country: China
50-16000-669R	AC Line Cord, 1.9 M grounded, three wire, BS 546 Plug. Associated Country: India
50-16000-671R	AC Line Cord, 1.8M grounded, CIE 23-16 plug. Associated Country: Italy
50-16000-672R	AC Line Cord, 1.9M grounded, three wire, S132 Plug. Associated Country: Israel
50-16000-727R	AC Line Cord, 1.9M grounded, three wire. Associated Country: Brazil

Country specific wall adapters

Part Number	Description
PWR-WUA5V12W0AU	Level VI power supply (wall adapter) 100-240 VAC, 5V, 2.5A with Australia plug
PWR-WUA5V12W0BR	Level VI power supply (wall adapter) 100-240 VAC, 5V, 2.5 A with Brazil plug
PWR-WUA5V12W0CN	Level VI power supply (wall adapter) 100-240 VAC, 5V, 2.5A with China plug
PWR-WUA5V12W0EU	Level VI power supply (wall adapter) 100-240 VAC, 5V, 2.5A with Europe plug
PWR-WUA5V12W0GB	Level VI power supply (wall adapter) 100-240 VAC, 5V, 2.5A with UK plug
PWR-WUA5V12W0IN	Level VI power supply (wall adapter) 100-240 VAC, 5V, 2.5A with India plug
PWR-WUA5V12W0KR	Level VI power supply (wall adapter) 100-240 VAC, 5V, 2.5A with Korea plug
PWR-WUA5V12W0US	Level VI power supply (wall adapter) 100-240 VAC, 5V, 2.5A with US plug



Documents / Resources

	ZEBRA MC9450 Series Handheld Mobile Computer [pdf] Installation Guide MC9450 Series Handheld Mobile Computer, MC9450 Series, Handheld Mobile Computer, Mobile Computer, Computer
---	---

References

- [User Manual](#)

[Manuals+](#), [Privacy Policy](#)

This website is an independent publication and is neither affiliated with nor endorsed by any of the trademark owners. The "Bluetooth®" word mark and logos are registered trademarks owned by Bluetooth SIG, Inc. The "Wi-Fi®" word mark and logos are registered trademarks owned by the Wi-Fi Alliance. Any use of these marks on this website does not imply any affiliation with or endorsement.