



ZEBRA MC9300 Ultra Rugged Mobile Computer User Guide

[Home](#) » [ZEBRA](#) » ZEBRA MC9300 Ultra Rugged Mobile Computer User Guide 

Contents

- 1 ZEBRA MC9300 Ultra Rugged Mobile Computer
- 2 CONTENTS
- 3 I. MC9300 Series Configuration Guide
- 4 MC9300 CONFIGURATIONS AVAILABLE
- 5 II. MC9300 Accessories Guide
- 6 Cradle options-1
 - 6.1 Single slot cradle
 - 6.2 Main features
 - 6.3 Additional accessories for single slot cradle
- 7 Cradle options-2
 - 7.1 Multi-slot ShareCradles
 - 7.2 Main features
 - 7.3 Additional accessories for multi-slot cradles
- 8 Chargers and batteries
 - 8.1 Spare battery
 - 8.2 Spare battery charger options:
 - 8.3 Main features
- 9 Spare Keypads
- 10 Other charge accessories
 - 10.1 Backwards compatibility
 - 10.2 USB charge cable
 - 10.3 Additional accessories for USB cable
- 11 Softgoods for gun configurations
- 12 Other accessories
 - 12.1 Mounting accessories
 - 12.2 Country specific AC grounded line cords
- 13 Specifications:
- 14 FAQ:
 - 14.1 Q: What is the display resolution of the MC9300 Series?
 - 14.2 Q: How can I charge multiple devices with the MC9300 Series?
 - 14.3 Q: Does the MC9300 Series support NFC?
- 15 Documents / Resources
 - 15.1 References
- 16 Related Posts

ZEBRA MC9300 Ultra Rugged Mobile Computer



USER GUIDE

CONTENTS

- I. MC9300 Series Configuration Guide
- II. MC9300 Series Accessories

I. MC9300 Series Configuration Guide

CONFIGURATION OPTIONS:	MC9300	OPTION	DESCRIPTION
Wireless Option	MC930X-XXXXXXX	0	WLAN 802.11 a/b/g/n/ac MU-MIMO & BT 5.0 BLE
RFID	MC93XB-XXXXXXX	B	None
	MC93XP-XXXXXXX	P	HF RFID Radio with NFC
Form Factor	MC93XX-GXXXXXX	G	Gun
Operating Temperature	MC93XX-SXXXXXX	S	Standard
	MC93XX-FXXXXXX	F	Freezer
Data Capture / Camera	MC93XX-AAXXXXX	A	SE965 1D Laser
	MC93XX-ABXXXXX	B	SE965 1D Laser + Front/Rear Camera
	MC93XX-ACXXXXX	C	SE4750 2D Imager (EOL, replaced by SE4770)
	MC93XX-ADXXXXX	D	SE4750 2D Imager + Front/Rear Camera (EOL, replaced by SE4770)
	MC93XX-AHXXXXX	H	SE4770 2D Imager
	MC93XX-AJXXXXX	J	SE4770 2D Imager + Front/Rear Camera
	MC93XX-AEXXXXX	E	SE4850 2D imager
	MC93XX-AFXXXXX	F	SE4850 2D imager + Front/Rear Camera
	MC93XX-AGXXXXX	G	SE4750 DPM
	MC93XX-AWXXXXX	W	SE4750 DPM Wide Angle
Keyboard	MC93XX-XXAXXXX	A	29 Key Function
	MC93XX-XXBXXXX	B	34 Key Function
	MC93XX-XXCXXXX	C	43 Key Function
	MC93XX-XXDXXXX	D	53 Key Standard Alpha Numeric
	MC93XX-XXEXXXX	E	53 Key VT Alpha Numeric
	MC93XX-XXFXXXX	F	53 Key 3270 Alpha Numeric
	MC93XX-XXGXXXX	G	53 Key 5250 Alpha Numeric
	MC93XX-XXHXXXX	H	58 Key Function Alpha Numeric
Operating System	MC93XX-XXXAXXX	A	Android AOSP
	MC93XX-XXXGXXX	G	Android GMS
Memory	MC93XX-XXXXX4XX	4	4 GB RAM / 32 GB Flash
Region	MC93XX-XXXXXXNA	NA	North America (USA, Canada, Puerto Rico)
	MC93XX-XXXXXXRW	RW	Rest of World (Excluding North America, China, and India)
	MC93XX-XXXXXXCN	CN	China
	MC93XX-XXXXXXIN	IN	India
Additional Features	MC93XX-XXXXXXXX-NI	NI	Non-Incendive (Class I, Div II)
	MC93XX-XXXXXXXX-TA	TA	TAA Compliant (Trade Agreement Act)
	MC93XX-XXXXXXXX-TI	TI	TAA Compliant (Trade Agreement Act), Non-Incendive (Class I, Div II)

MC9300 CONFIGURATIONS AVAILABLE



SKUCategory	Features
Base	Platform Qualcomm Snapdragon 660 Octa-core, 2.2 GHz CPU 4 GB RAM / 32 GB Flash 802.11a/b/g/n/ac WiFi, 2 x 2 MU-MIMO, Bluetooth 4.0 Sensors Accelerometer Gyroscope Light Sensor Display 4.3" WVGA (800×480) Color with Gorilla Glass touch panel
Package 1	Includes everything in a base unit as well as: NFC Radio Vibration Feedback
Package 2	Includes everything in a Package 1 unit as well as: Front and Rear color camera
Freezer	Includes everything in a Package 1 unit as well as: Sensor-driven Heated scan exit window Freezer rated 5,000 mAh Lithium Ion Battery Condensation-Free operation -30°C/-22°F to 50°C/122°F Fog-Free display with optically bonded Gorilla Glass touch panel Blue stripe around display and Blue labelled battery
DPM	Includes everything in a Package 1 unit as well as: Standard or Wide Angle SE4750 DPM imager Patented LED Light Diffusion Array
Non-Incendive	Available in a variety of SKU categories, as well as: UL Class I/II/III, Div 2 certification Orange stripe around display, Orange labelling on unit and battery

II. MC9300 Accessories Guide



Cradle options-1

Single slot cradle



Single Slot Cradle w/Spare Battery Charger:

CRD-MC93-2SUCHG-01: Single slot USB cradle, w/spare battery charger, charges one device and one spare battery. Allows USB communication to the device with an additional USB-C cable.

Requires: Power supply PWR-BGA12V50W0WW, DC line cord CBL-DC-388A1-01 and country specific 3 wire AC line cord.

Main features

- USB communication
- Fast-charge while using MC93 PP+ batteries
- Charges one device and one spare battery
- Compatible with Level V and Level VI power supplies
- NOT COMPATIBLE WITH MC92

Additional accessories for single slot cradle

CBL-TC2X-USBC-01 or CBL-TC5X-USBC2A-01
USB-C cable for single slot cradle and cable cup



PWR-BGA12V50W0WW

Level VI AC/DC power supply (brick, replacement for PWRS-14000-148R)

AC Input: 100-240V, 2.4A

DC Output: 12V, 4.16A, 50W

Requires: DC line cord and country specific grounded AC line cord.



CBL-DC-388A1-01

DC line cord for running the single slot cradles or battery chargers from a single Level VI power supply PWR-BGA12V50W0WW, Level VI replacement for PWRS-14000-148R.



23844-00-00R

US AC line cord, 7.5 feet long, grounded, three wire for power supplies.

Cradle options-2

Multi-slot ShareCradles

**Multi-Slot Cradle options:**

CRD-MC93-4SCHG-01: 4Slot charge only cradle, charges up to four devices.

CRD-MC93-4SETH-01: 4Slot Ethernet cradle, charges up to four devices and provides Ethernet communication.

All Cradles Require: Power supply PWR-BGA12V108W0WW, DC cord CBL-DC-381A1-01 and country specific 3 wire AC line cord.

Main features

- Charge only and Ethernet ShareCradle configurations
- Fast-charge while using MC93 PP+ batteries
- Charges 4 devices
- Compatible with Level V and Level VI power supplies
- Desk/Wall/Rack mount options
- NOT COMPATIBLE WITH MC92

Additional accessories for multi-slot cradles**PWR-BGA12V108W0WW**

Level VI AC/DC power supply (brick, Replacement for PWRS-14000-241R)

AC Input: 100-240V, 2.8A

DC Output: 12V, 9A, 108W

Requires: DC line cord and country specific grounded AC line cord.



CBL-DC-381A1-01

DC line cord for running multi-slot cradles from a single Level VI power supply PWR-BGA12V108W0WW, Level VI replacement for PWRS-14000-241R



23844-00-00R

US AC line cord, 7.5 feet long, grounded, three wire for power supplies.



BRKT-SCRD-SMRK-01

Rack/Wall mounting bracket, allows to install any multi-slot cradle on a wall or a 19" IT rack.

Chargers and batteries

Spare battery



BTRY-MC93-STN-01(Standard), BTRY-MC93-NI-01 (Non Incendive)

PowerPrecision+ Lithium Ion 7000 mAh battery, provides advanced State of Charge and State of Health, supports fast-charge while using MC93 cradles and chargers.

Pack of 10 batteries: BTRY-MC93-STN-10, BTRY-MC93-NI-10

BTRY-MC93-FZ-01 (Freezer)

PowerPrecision+ Lithium Ion 5000 mAh Freezer rated (-30C) battery, provides advanced State of Charge and State of Health, supports fast-charge while using MC93 cradles and chargers.

Pack of 10 batteries: BTRY-MC93-FZ-10

Spare battery charger options:



Main features

- 4-slot and 16-slot configurations
- Fast-charge while using MC93 PP+ batteries
- Compatible with Level V and Level VI power supplies
- Desk/Wall/Rack mount options
- NOT COMPATIBLE WITH MC92 BATTERIES

SAC-MC93-4SCHG-01: 4-slot battery charger, charges four spare batteries. Requires: Power supply PWR-BGA12V50W0WW, DC line cord CBL-DC-388A1-01 and country specific 3 wire AC line cord.

SAC-MC93-16SCHG-01: 16-slot battery charger, charges sixteen spare batteries. Requires: Power supply PWR-BGA12V108W0WW, DC cord CBL-DC-381A1-01 and country specific 3 wire AC line cord.



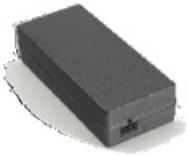
PWR-BGA12V50W0WW

Level VI AC/DC power supply. AC Input: 100-240V, 2.4A, DC Output: 12V, 4.16A, 50W Requires: DC line cord and country specific grounded AC line cord.



CBL-DC-388A1-01

DC line cord for running the single slot cradles or battery chargers from a single Level VI power supply PWR-BGA12V50W0WW.

**PWR-BGA12V108W0WW**

Level VI AC/DC Power Supply. AC Input: 100-240V, 2.8A, DC Output: 12V, 9A, 108W Requires: DC line cord and country specific grounded AC line cord.

**CBL-DC-381A1-01**

DC line cord for running multi-slot cradles from a single Level VI power supply PWR-BGA12V108W0WW.

**23844-00-00R**

US AC line cord, 7.5 feet long, grounded, three wire for power supplies.

**BRKT-SCRD-SMRK-01**

Rack/Wall mounting bracket, allows to install the 16-slot battery charger or up to four 4-slot battery chargers on a wall or a 19" IT rack.

Spare Keypads



53 Key Standard

KYPD-MC9353ANR-01
KYPD-MC9353ANR-10



53 Key TE 5250

KYPD-MC93535250-01
KYPD-MC93535250-10



53 Key TE 3270

KYPD-MC93533270-01
KYPD-MC93533270-10



53 Key TE VT

KYPD-MC9353VT-01
KYPD-MC9353VT-10



43 Key Function

KYPD-MC9343FN-01
KYPD-MC9343FN-10



34 Key Function

KYPD-MC9334FNR-01
KYPD-MC9334FNR-10



58 Key Func AN

KYPD-MC9358ANR-01
KYPD-MC9358ANR-10



29 Key Function

KYPD-MC9329NMR-01
KYPD-MC9329NMR-10

Other charge accessories

Backwards compatibility



ADP-MC93-CRDCUP-01

Charge only adapter for backwards compatibility with MC9x cradles, the adapter can be installed on any MC9x single slot or multi-slot cradle (charge only or Ethernet) allowing to charge a MC93 device (the adapter does not provide USB or Ethernet communication and does not provide fast-charge).



USB charge cable



CBL-MC93-USBCHG-01: USB cable, provides fast-charge when a MC93 PP+ battery and a wall adapter is used, it also allows USB communication to the device when connected to a PC. Requires: CBL-TC2X-USBC-01 and Power supply PWR-WUA5V12W0US

Additional accessories for USB cable



PWR-WUA5V12W0US

Level VI power supply (wall adapter) 100-240 VAC, 5V, 2.5A with US plug.

Other countries:

- Australia: PWR-WUA5V12W0AU
- Brazil: PWR-WUA5V12W0BR
- China: PWR-WUA5V12W0CN

- Europe: PWR-WUA5V12W0EU
- India: PWR-WUA5V12W0IN
- Korea: PWR-WUA5V12W0KR
- UK: PWR-WUA5V12W0GB

Softgoods for gun configurations

Holster



SG-MC9X-SHLSTG-01

Fabric holster, secures to a belt or a shoulder strap. Allows to carry the gun device on the hip or cross-body. Requires belt or shoulder strap ordered separately.

Shoulder strap 58-40000-007R

Universal shoulder strap for fabric holster.

Belt for holster 11-08062-02R

Universal belt for fabric holster.



Protective boot

SG-MC93-RBTG-01

Protective boot for gun configurations, protects the device from wear and tear.



SG-MC93-RBTG-01

Protective boot for gun configurations, protects the device from wear and tear.



Hand strap

SG-MC93-HDSTPG-01

Spare hand strap for gun configurations (pkg 1)



Other accessories

Mounting accessories



MNT-MC93-FLCHKT-01

Un-powered forklift mount. Allows installing the device on a roll bar or square surface of a forklift. Includes: Forklift holder (MNT-MC93-FLCH-01), RAM double socket arm for 1" ball (MNT-RAM-B201U) , RAM forklift clamp 2.5" max width square rail base with 1" ball (MNT-RAM-B247U25).



BRKT-SCRD-SMRK-01

Rack/Wall mounting bracket, allows to install any Multi-slot ShareCradle, the 16-slot battery charger or up to four 4-slot battery chargers on a wall or a 19" server rack.



MISC-MC93-SCRN-01

Tempered glass screen protector (Qty. 5)



SG-TC7X-STYLUS-03

Stylus with coiled tether (Qty. 3). Made of conductive carbon-filled plastic material, optimized for enterprise durability.



HS3100-OTH

HS3100 Rugged Bluetooth headset with over-the-head headband. Included HS3100 boom module and HSX100 OTH headband module.
HS3100-BTN-L

HS3100 Rugged Bluetooth headset with behind-the-neck headband (left). Included HS3100 boom module and HSX100 BTN-L headband module.

Country specific AC grounded line cords

Other accessories

Country specific AC grounded line cords	
Part Number	Description
23844-00-00R	AC line cord, 7.5 feet long, grounded, three wire. Associated Country: US
50-16000-217R	AC Line Cord, 1.9M, grounded, three wire, AS 3112 plug. Associated Country: Australia, New Guinea
50-16000-218R	AC Line Cord, 1.8M, grounded, three wire, NEMA 1-15P plug. Associated Country: Japan
50-16000-219R	AC Line Cord, 1.8M, three wire, grounded BS1363 plug. Associated Countries: Hong Kong, Iraq, Malaysia, Singapore, United Kingdom
50-16000-220R	AC Line Cord, 1.8M, grounded, three wire CEE 7/7 plug. Associated Countries: Europe, Abu Dhabi, Bolivia, Dubai, Egypt, Iran, Korea, Russia, Vietnam
50-16000-256R	AC Line Cord, 1.8M, grounded, three wire, CEE7/7 plug. Associated Country: Korea
50-16000-257R	AC Line Cord, 1.8M, grounded, three wire, IEC 60320 C13 plug. Associated Country: China
50-16000-669R	AC Lind Cord, 1.9 M grounded, three wire, BS 546 Plug. Associated Country: India
50-16000-671R	AC Line Cord, 1.8M grounded, CIE 23-16 plug. Associated Country: Italy
50-16000-672R	AC Line Cord, 1.9M grounded, three wire, S132 Plug. Associated Country: Israel
50-16000-727R	AC Line Cord, 1.9M grounded, three wire. Associated Country: Brazil

Country specific wall adapters	
Part Number	Description
PWR-WUA5V12W0AU	Level VI power supply (wall adapter) 100-240 VAC, 5V, 2.5A with Australia plug
PWR-WUA5V12W0BR	Level VI power supply (wall adapter) 100-240 VAC, 5V, 2.5 A with Brazil plug
PWR-WUA5V12W0CN	Level VI power supply (wall adapter) 100-240 VAC, 5V, 2.5A with China plug
PWR-WUA5V12W0EU	Level VI power supply (wall adapter) 100-240 VAC, 5V, 2.5A with Europe plug
PWR-WUA5V12W0GB	Level VI power supply (wall adapter) 100-240 VAC, 5V, 2.5A with UK plug
PWR-WUA5V12W0IN	Level VI power supply (wall adapter) 100-240 VAC, 5V, 2.5A with India plug
PWR-WUA5V12W0KR	Level VI power supply (wall adapter) 100-240 VAC, 5V, 2.5A with Korea plug
PWR-WUA5V12W0US	Level VI power supply (wall adapter) 100-240 VAC, 5V, 2.5A with US plug

Specifications:

- Platform: Qualcomm Snapdragon 660 Octa-core, 2.2 GHz CPU
- Memory: 4 GB RAM / 32 GB Flash
- Wireless Connectivity: 802.11a/b/g/n/ac WiFi, Bluetooth 4.0
- Sensors: Accelerometer, Gyroscope, Light Sensor
- Display: 4.3" WVGA (800×480) Color with Gorilla Glass touch panel

FAQ:

Q: What is the display resolution of the MC9300 Series?

A: The display resolution of the MC9300 Series is WVGA (800×480) with a color display and Gorilla Glass touch panel.


Q: How can I charge multiple devices with the MC9300 Series?

A: You can use the Multi-Slot Cradle options such as the CRD-MC93-4SCHG-01 or CRD-MC93-4SETH-01 to charge up to four devices simultaneously.

Q: Does the MC9300 Series support NFC?

A: Yes, the MC9300 Series includes NFC radio for wireless communication.

Documents / Resources

 <p>MC9300 Series Configuring & Accessories Guide</p>	<p>ZEBRA MC9300 Ultra Rugged Mobile Computer [pdf] User Guide MC9300 Ultra Rugged Mobile Computer, MC9300, Ultra Rugged Mobile Computer, Rugged Mobile Computer, Mobile Computer, Computer</p>
--	--

References

- [User Manual](#)

Manuals+, Privacy Policy

This website is an independent publication and is neither affiliated with nor endorsed by any of the trademark owners. The "Bluetooth®" word mark and logos are registered trademarks owned by Bluetooth SIG, Inc. The "Wi-Fi®" word mark and logos are registered trademarks owned by the Wi-Fi Alliance. Any use of these marks on this website does not imply any affiliation with or endorsement.