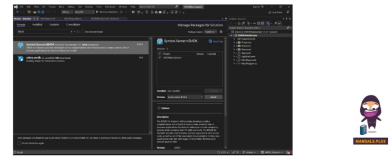


ZEBRA MAUI Demo Application Software



ZEBRA MAUI Demo Application Software User Guide

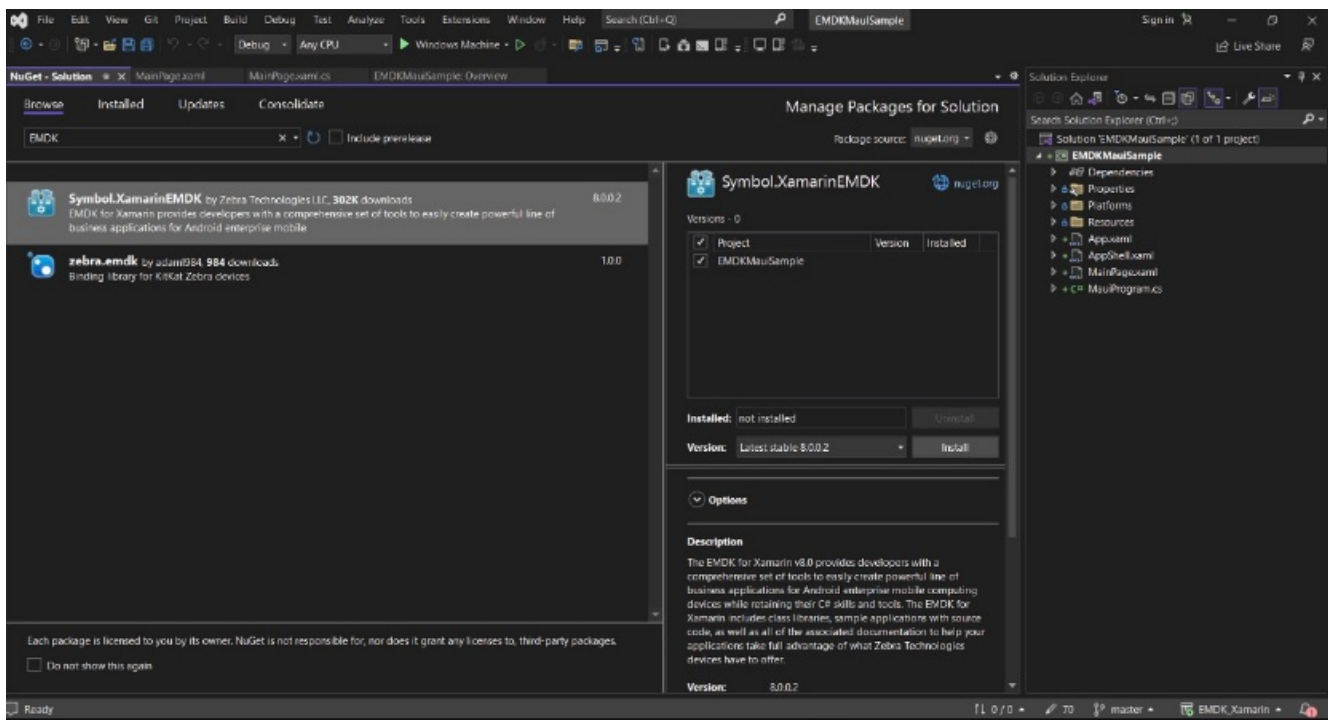
[Home](#) » [ZEBRA](#) » ZEBRA MAUI Demo Application Software User Guide 

Contents

- [1 ZEBRA MAUI Demo Application Software](#)
- [2 Product Information](#)
- [3 Product Usage Instructions](#)
- [4 FAQ](#)
- [5 Introduction](#)
- [6 Description](#)
- [7 Components](#)
- [8 Installation](#)
- [9 Documents / Resources](#)
 - [9.1 References](#)



ZEBRA MAUI Demo Application Software



Product Information

Specifications

- **Product Name:** Zebra RFID MAUI Application
- **Version:** v1.0.209
- **Release Date:** 08 MAR 2024

Product Usage Instructions

Item Inventory

Tap on “Item Inventory” to open the inventory screen. This screen displays the reader connection status. Press the gun trigger to start the inventory process. As the reader reads tags, the tag list will be populated with EPC ID, RSSI, and count values. To select a specific tag, tap on its ID. The selected tag ID will be shown on the commissioning and search screens.

Reader List

- On the home screen, tap on “Reader List” to view available and connected readers.

Firmware Update

- Select “Firmware Update” to update the firmware. Copy the firmware file to /sdcard/Download/ZebraFirmware to list the firmware file for updating.

Barcode Scanner

- Select “Barcode Scanner” to scan barcode data.

Key Remapping

- The application now supports new key remapping features.

Note: Ensure that the app has been granted permission to manage all files.

FAQ

- **Q:** How do I ensure the proper functionality of the RFID MAUI Application?
- **A:** Make sure the application has the necessary permissions, such as managing all files, and that the device is compatible with the application.
- **Q:** How can I troubleshoot connectivity issues with RFID readers?
- **A:** Check the reader connection status within the application and ensure proper physical connections with the RFID reader device.
- **Q:** Can I customize the settings for tag reading and inventory processes?
- **A:** The application provides options to select specific tags, view reader lists, update firmware, and scan barcode data, offering some customization for user preferences.

Introduction

- These release notes are for the Zebra RFID MAUI Demo Application v1.0.209

Description

- The Zebra RFID MAUI Demo application demonstrates the use case of using the MAUI applications to work with RFID readers.

v1.0.209 updates

- Integrate the latest SDK version release

Initial release

- Inventory – Do inventory using Trigger
- Locate – Search particular tag using Locate API
- Reader List – access available readers
- Firmware update
- Scan barcode data

Device Compatibility

- MC33xR
- RFD40
- RFD40 Premium and RFD40 Premium plus
- RFD8500

- RFD90

Release Notes

Zebra RFID MAUI Application

Components

The zip file contains the following components:

- Zebra RFID MAUI Demo APK file
- Zebra RFID MAUI Demo Visual Studio project source code

Installation

Supported operating systems: Visual Studio 2019

Developer system requirements:

- Developer Computers: Windows 10 64-bit
- MAUI

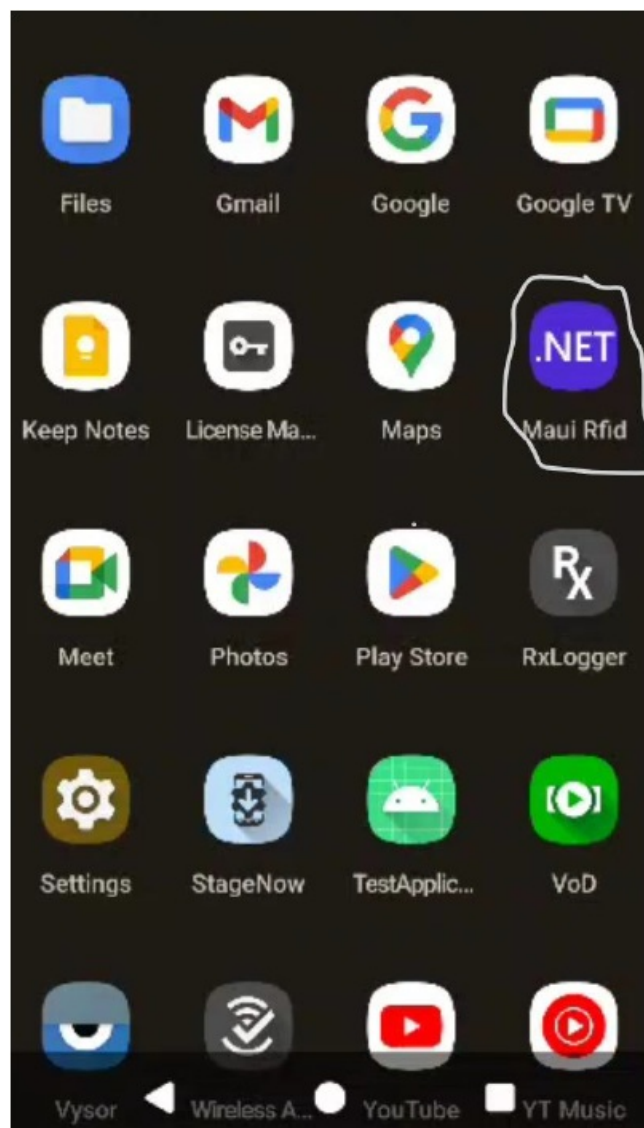
Notes

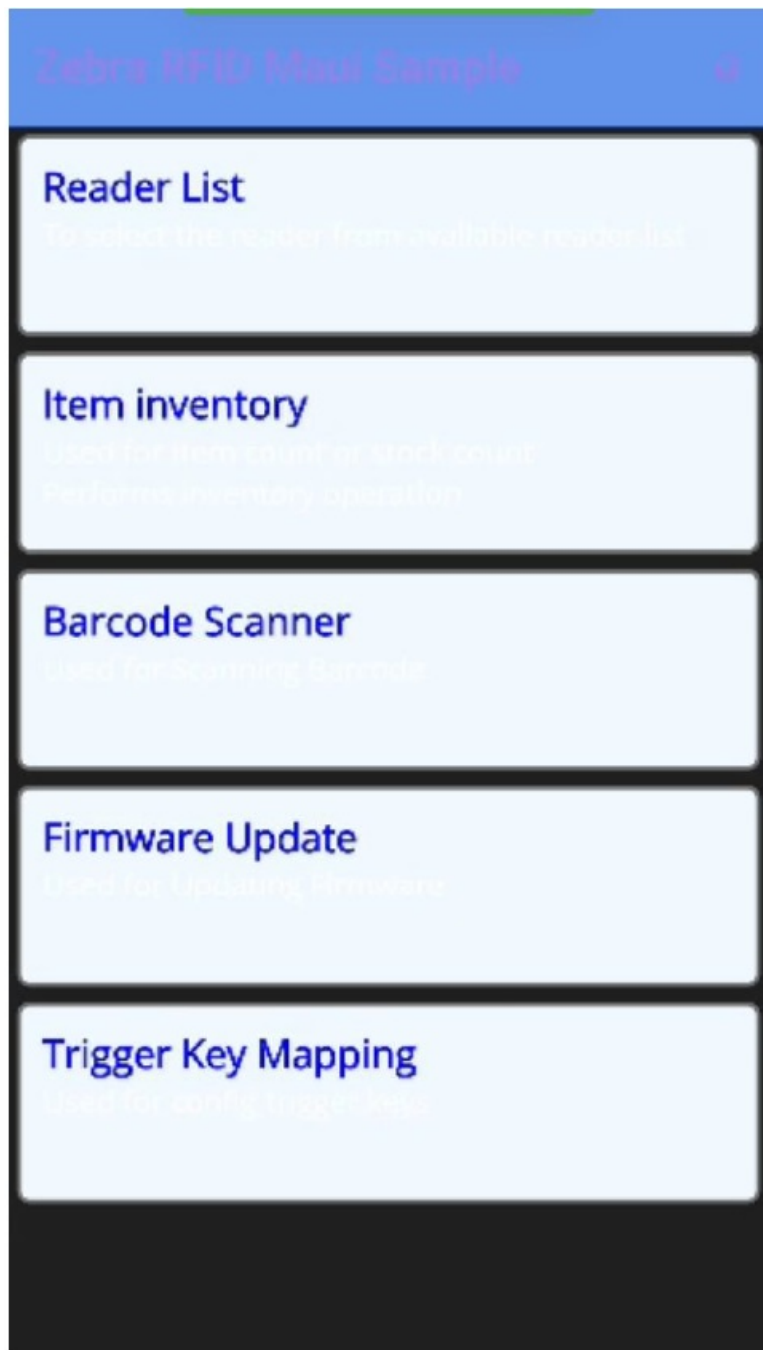
1. Exit the RFID Demo application or other user application that can be using reader
2. Reader region is already set as per regulatory requirements

Application usage and Screens brief

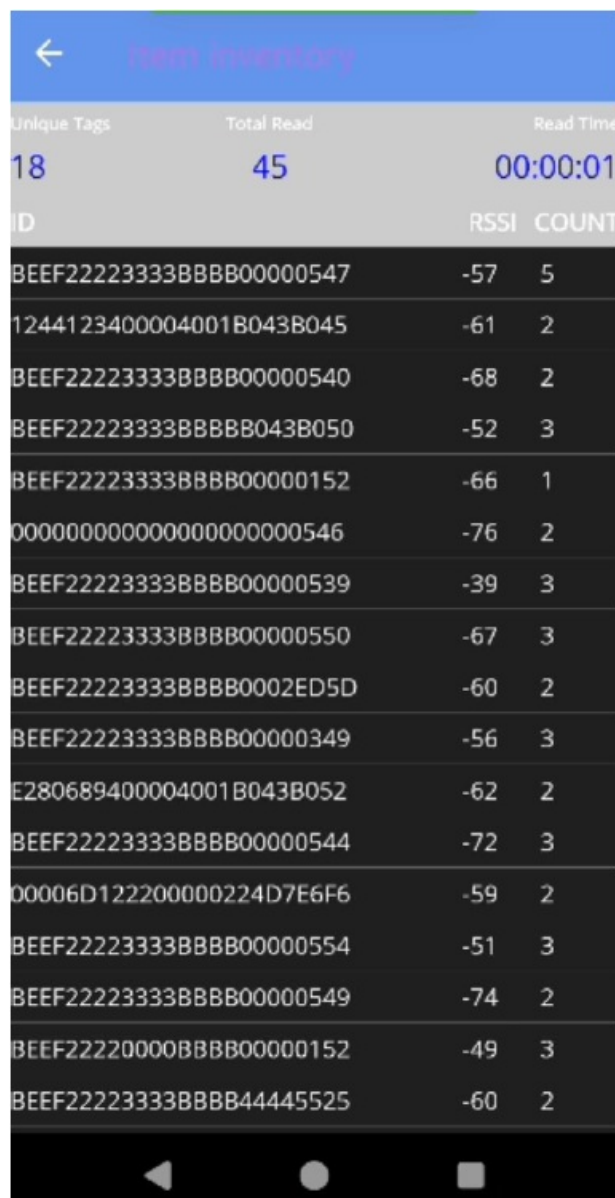
1. From the home screen using the application icon to launch the application, the home screen is shown on the next page

Zebra RFID MAUI Application





- Tap on Item Inventory to open the inventory screen.
- It shows the reader connection status and presses the gun trigger to start the inventory.
- When a reader reads the tags tag list gets populated with tags EPC ID, RSSI and count values Tag Any tag ID to select it. The selected tag ID will be shown on the commissioning and search screen.

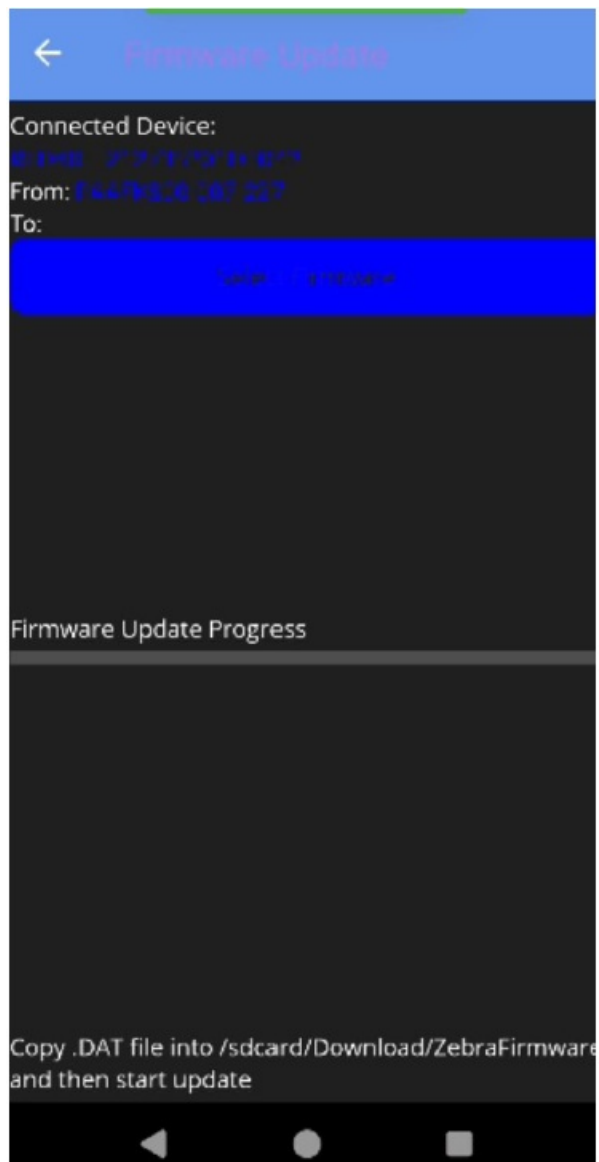


Unique Tags	Total Read	Read Time	ID	RSSI	COUNT
18	45	00:00:01	BEEF22223333BBBB00000547	-57	5
			1244123400004001B043B045	-61	2
			BEEF22223333BBBB00000540	-68	2
			BEEF22223333BBBBB043B050	-52	3
			BEEF22223333BBBBB00000152	-66	1
			000000000000000000000546	-76	2
			BEEF22223333BBBBB00000539	-39	3
			BEEF22223333BBBBB00000550	-67	3
			BEEF22223333BBBBB0002ED5D	-60	2
			BEEF22223333BBBBB00000349	-56	3
			E280689400004001B043B052	-62	2
			BEEF22223333BBBBB00000544	-72	3
			00006D122200000224D7E6F6	-59	2
			BEEF22223333BBBBB00000554	-51	3
			BEEF22223333BBBBB00000549	-74	2
			BEEF22220000BBBBB00000152	-49	3
			BEEF22223333BBBBB44445525	-60	2

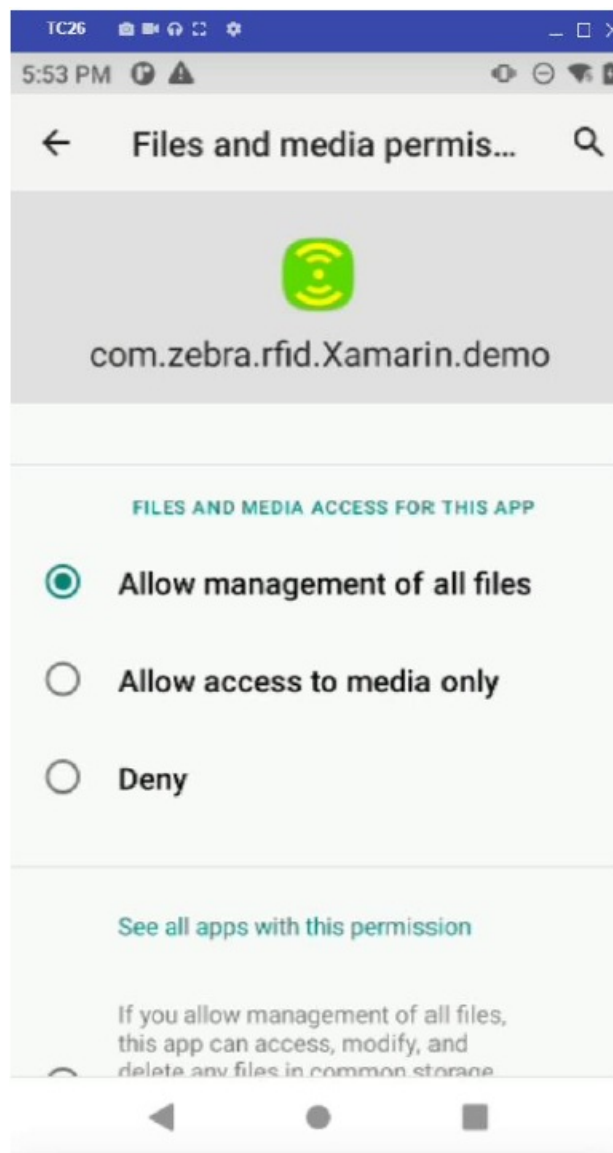
- Tap on Reader List on the Home screen to see available and connected reader



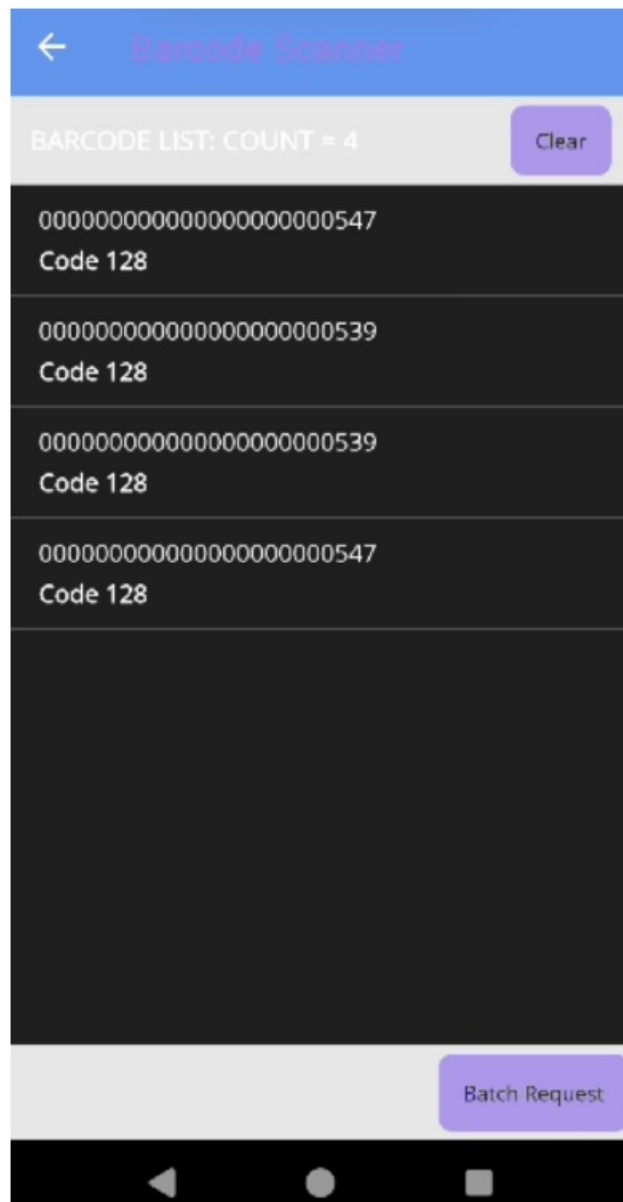
- Select Firmware Update for firmware update Copy the file to /sdcard/Download/ZebraFirmware to list the firmware file



Note: Make sure the app has been provided with Allow management of all files permission



- Select Barcode scanner to scan barcode data



- New Key Remapping support



Documents / Resources

	<p>ZEBRA MAUI Demo Application Software [pdf] User Guide</p> <p>MAUI Demo Application Software, Demo Application Software, Application Software, Software</p>
---	---

References

- [User Manual](#)

[Manuals+](#), [Privacy Policy](#)

This website is an independent publication and is neither affiliated with nor endorsed by any of the trademark owners. The "Bluetooth®" word mark and logos are registered trademarks owned by Bluetooth SIG, Inc. The "Wi-Fi®" word mark and logos are registered trademarks owned by the Wi-Fi Alliance. Any use of these marks on this website does not imply any affiliation with or endorsement.