



ZEBRA Machine Vision Software Development User Guide

[Home](#) » [ZEBRA](#) » ZEBRA Machine Vision Software Development User Guide 



**Configuring the Update Service for
Zebra Aurora Imaging Library and
Zebra Aurora Design Assistant
A How-To Guide**

Contents

- [1 Machine Vision Software Development](#)
- [2 Documents / Resources](#)
 - [2.1 References](#)
- [3 Related Posts](#)

Machine Vision Software Development

ZEBRA AURORA IMAGING LIBRARY AND ZEBRA AURORA DESIGN ASSISTANT
HOW TO CONFIGURE AND UPDATE SERVICE

How to configure the update service for Zebra Aurora Imaging Library and Zebra Aurora Design Assistant*

Summary

With Zebra OneCare™ Technical and Software Support (TSS), you're entitled to free updates to Zebra Aurora Imaging Library and Zebra Aurora Design Assistant. To download and install the updates, there's a few simple steps to follow.

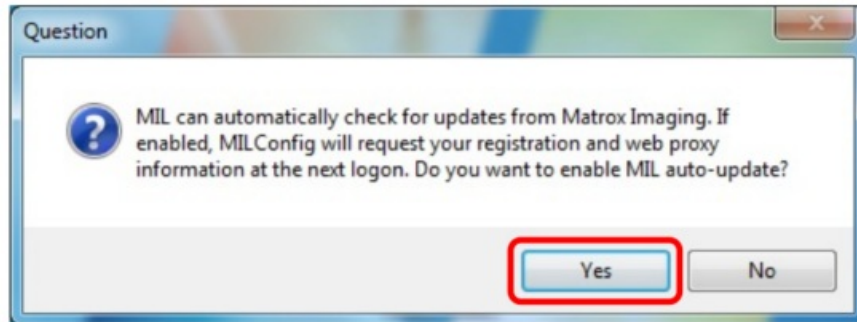
1. Enter your software registration details within MILConfig.
2. Download the updates you want using MILConfig.

3. Install the updates you downloaded.

This document will take you through each of the steps to get the update service running. It'll also include how to automatically check for updates.

* Please note that we are currently in transition to a complete rebrand of Aurora Imaging Library and Aurora Assistant software (from Matrox Imaging software product branding). As such, the screenshots to follow reflect our current software without the planned rebrand. We will update this document when updated software versions reflect the rebranding.

1. At the end of MIL or MDA setup, press Yes when presented with the following dialog box.

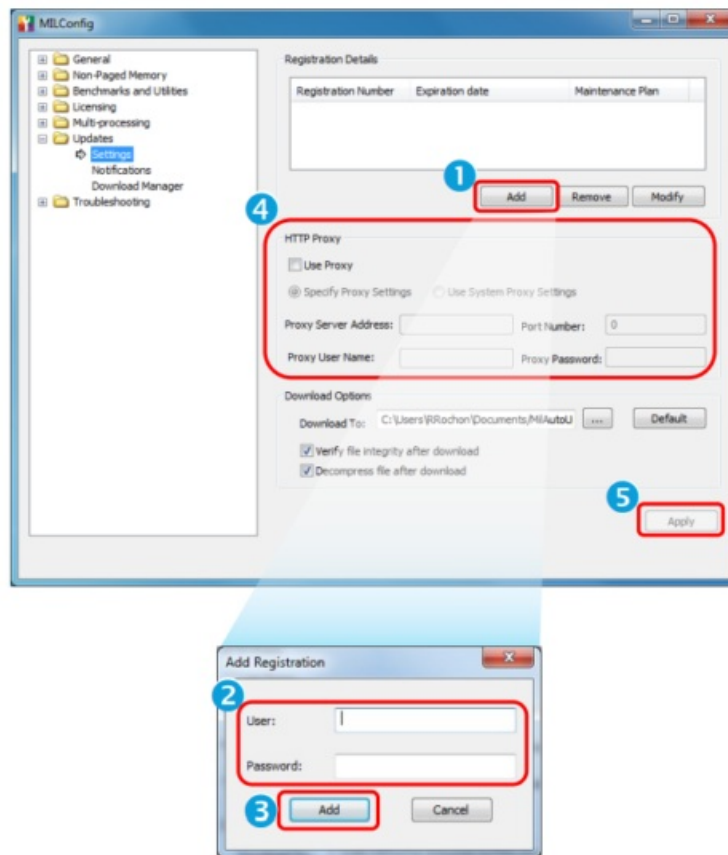


2. When prompted, select Yes and press Finish.



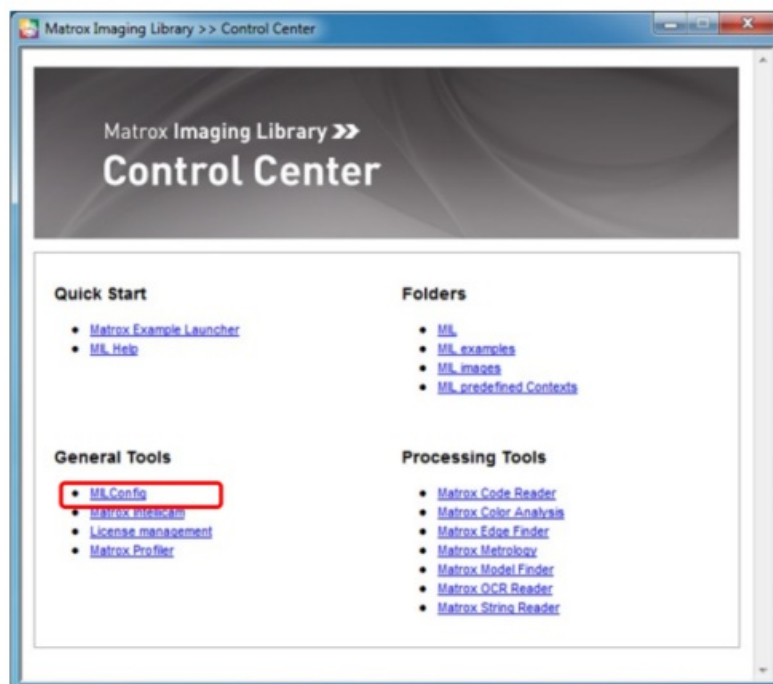
3. At the next logon, you will be presented with the following screen and will need to **1** press Add to open a dialog box to **2** enter the credentials you were given in the software registration notice email and **3** press Add to confirm these. You may also need to **4** check Use Proxy and enter the relevant details.

Contact your network administrator for more information. Finally, **5** press Apply to confirm all settings.

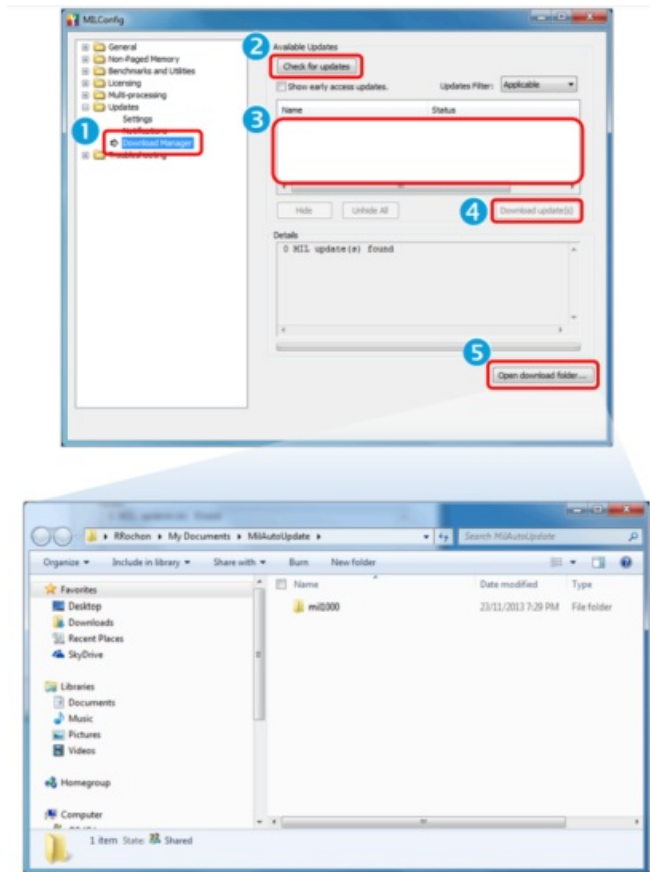


Manual Updates

If No was selected as the answer to the question to enable the update service, or MILConfig was closed without adding Registration details, then you will need to reopen MILConfig, which is accessed through the MIL Control Center, select Updates and then Settings.

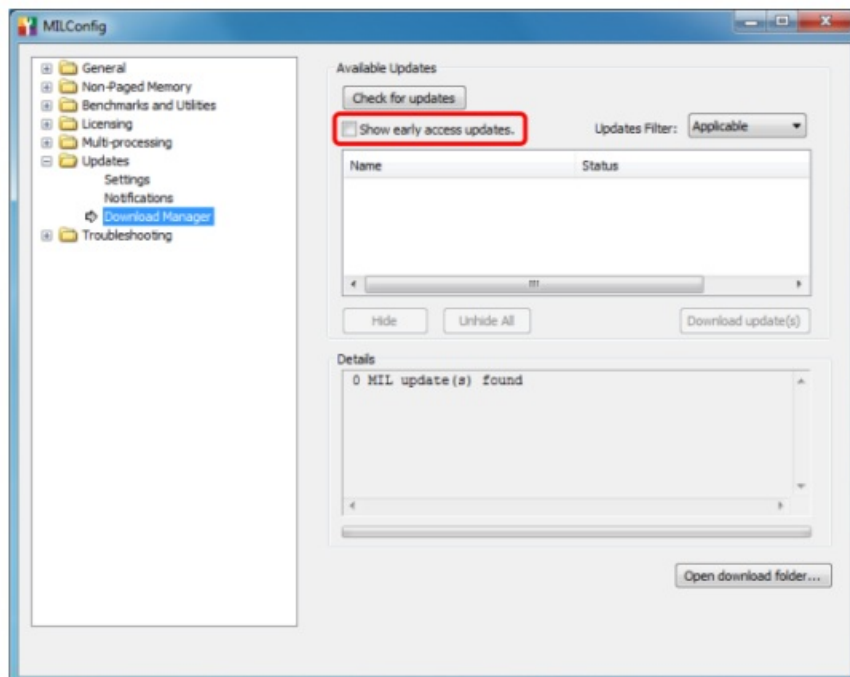


4. 1 Select Download Manager under Updates and 2 click on Check for updates to view the available updates. 3 Select the desired update(s) and then 4 click Download update(s). Once the update(s) has/ have been downloaded, retrieve the file(s) by 5 clicking on Open download folder.

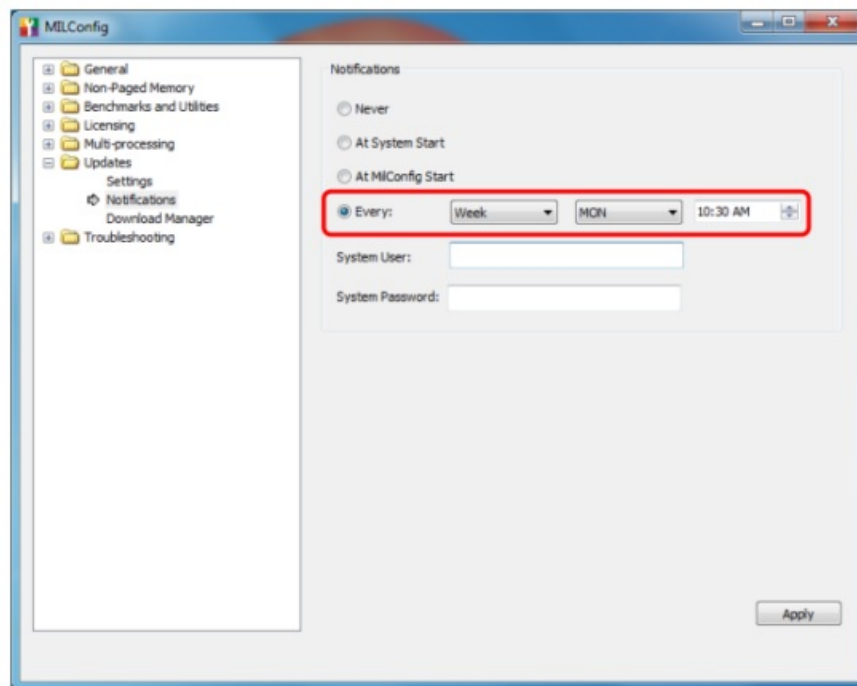


5. **Note** that the Download Manager, found under Updates, provides the means to whether or not Show early access updates.

Note that Early Access updates typically introduce a hard expiry date that is only removed once the official release of the same update is applied.



6. It is also recommended to change the Notifications setting under Updates to Every: Week in order to avoid missing out on any new updates.



Matrox Imaging and Matrox Electronic Systems Ltd. are now part of Zebra Technologies Corporation.



Zebra Technologies Corporation and its direct and indirect subsidiaries


3 Overlook Point, Lincolnshire, Illinois 60069 USA

Zebra and the stylized Zebra head are trademarks of Zebra Technologies Corp., registered in many jurisdictions worldwide.

All other trademarks are the property of their respective owners.

© 2024 Zebra Technologies Corp. All rights reserved.

Documents / Resources

| | |
|---|--|
|  | <p>ZEBRA Machine Vision Software Development [pdf] User Guide Machine Vision Software Development, Machine, Vision Software Development, Software Development, Development</p> |
|---|--|

References

- [User Manual](#)

[Manuals+](#), [Privacy Policy](#)

This website is an independent publication and is neither affiliated with nor endorsed by any of the trademark owners. The "Bluetooth®" word mark and logos are registered trademarks owned by Bluetooth SIG, Inc. The "Wi-Fi®" word mark and logos are registered trademarks owned by the Wi-Fi Alliance. Any use of these marks on this website does not imply any affiliation with or endorsement.