



ZEBRA ET4X Expansion Back Installation Guide

[Home](#) » [ZEBRA](#) » ZEBRA ET4X Expansion Back Installation Guide 



ET4X Expansion Back Installation Guide



Contents

- [1 ET4X Expansion Back](#)
- [2 Installation](#)
- [3 Documents / Resources](#)
 - [3.1 References](#)
- [4 Related Posts](#)

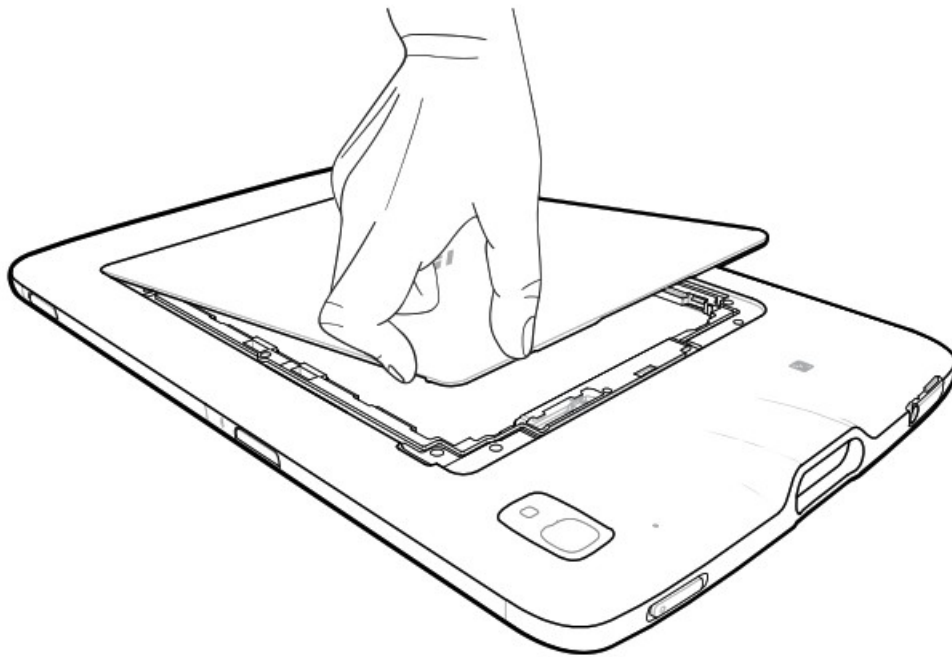
ET4X Expansion Back

ZEBRA and the stylized Zebra head are trademarks of Zebra Technologies Corp., registered in many jurisdictions worldwide. All other trademarks are the property of their respective owners. © 2022 Zebra Technologies Corp. and/or its affiliates. All rights reserved.

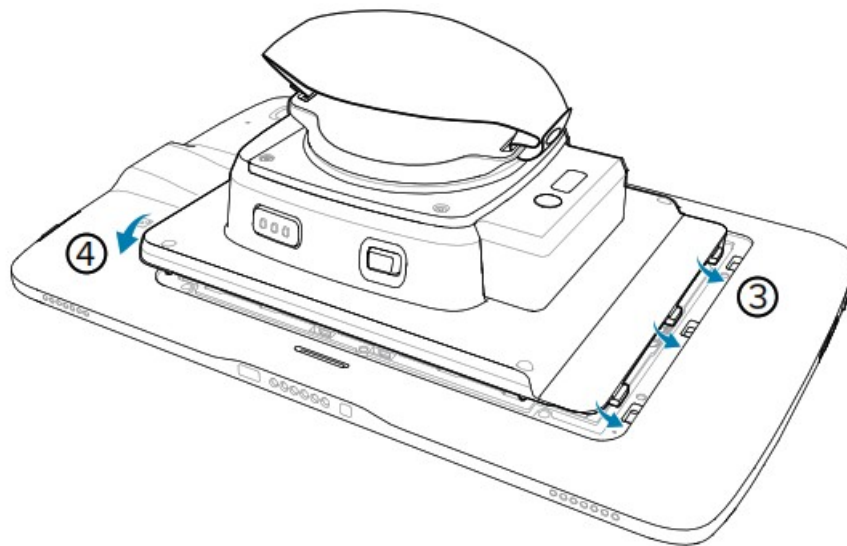
Installation

1.  **CAUTION:** Power off the ET4X before installing or removing Expansion Back.
2.  **CAUTION:** Do not use any tool for battery cover removal. Puncturing the battery or seal may cause a hazardous condition and a potential risk of injury.

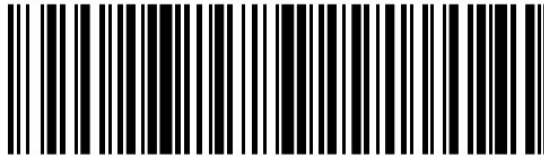
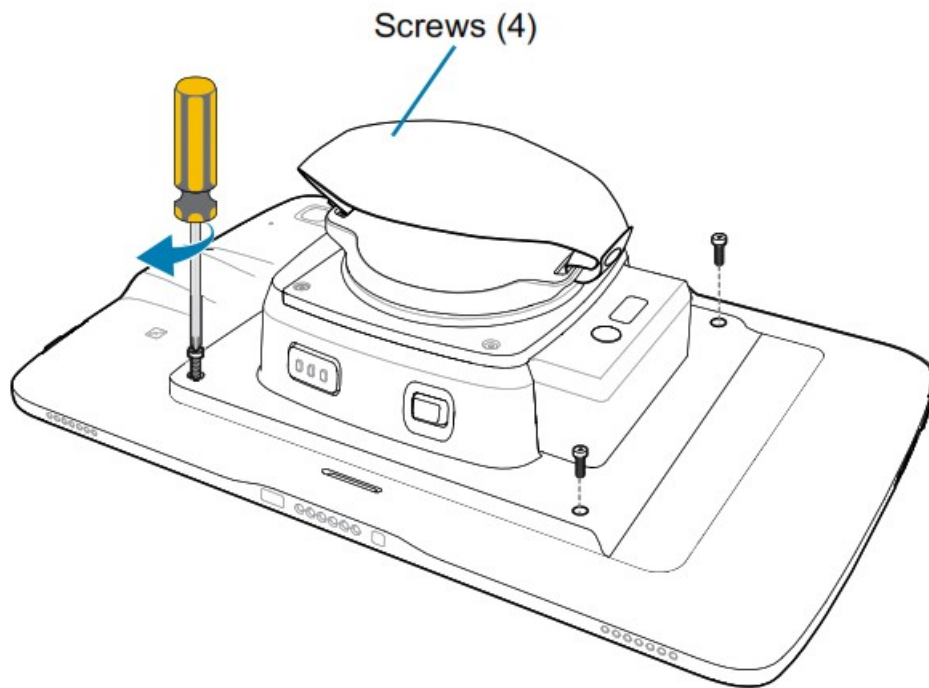
Remove battery cover and store in safe place.



3. Insert the tabbed end of the expansion back into the battery well. Ensure that the tabs on the expansion back are aligned with the slots in the battery well.



4. Rotate the expansion back down into the battery well.
5. Using a T5 Torx screwdriver, secure expansion back to device using four M2 screws. Torque to 0.43N-m.



MN-004506-01EN — May 10, 2022

Zebra Technologies | 3 Overlook Point |
Lincolnshire, IL 60069 USA
zebra.com

Documents / Resources

	ZEBRA ET4X Expansion Back [pdf] Installation Guide ET4X, ET4X Expansion Back, Expansion Back, Back
--	---

References

- [Zebra Technologies | Visible. Connected. Optimized.](#)