


ZEBRA DS8178 Handheld Imagers



ZEBRA DS8178 Handheld Imagers User Guide

[Home](#) » [ZEBRA](#) » ZEBRA DS8178 Handheld Imagers User Guide 

Contents

- [1 ZEBRA DS8178 Handheld Imagers](#)
- [2 Product Usage Instructions](#)
- [3 Charge / Communication Cradles](#)
- [4 Document Capture Stand](#)
- [5 Battery and PowerCap™](#)
- [6 Replacement Battery Door Covers](#)
- [7 Power Supplies and Line Cords](#)
- [8 Mounting Hardware](#)
- [9 Mounting Hardware Available From Third Parties](#)
- [10 Documents / Resources](#)
 - [10.1 References](#)
- [11 Related Posts](#)



ZEBRA DS8178 Handheld Imagers



Specifications:

- **Product Name:** DS8178 and DS8178-HC Series Imagers
- **Manufacturer:** Zebra Technologies Corp.
- **Accessories:** Power supplies, battery packs, capacitors, USB adapters, mounts, holsters
- **Power Supply:** PWR-WUA5V12W0XX – 100-240 VAC, 5 V, 2.5 A

Product Usage Instructions

1. Customize Your Solution With Accessories:

We offer a range of accessories like power supplies, battery packs, mounts, and more to enhance your barcode scanning experience. Choose accessories that fit your specific needs and region. Part numbers may vary by region.

2. Charge / Communication Cradles:

Use the charge/communication cradles provided to conveniently charge and communicate with your DS8178 or DS8178-HC Series Imagers.

3. Document Capture Stand:

Utilize the document capture stand for hands-free scanning and improved productivity.

4. Battery and PowerCap™:

Ensure your scanner stays powered with the PowerPrecision+ Battery and PowerCap for extended usage.

5. Replacement Battery Door Covers:

If needed, replace the battery door covers with genuine Zebra Technologies parts for optimal performance.

6. Power Supplies and Line Cords:

Use the PWR-WUA5V12W0XX Power Supply with country-specific plugs to power your device efficiently.

7. Mounting Hardware:

Explore the mounting hardware options available to securely mount your scanner for convenient access.

FAQ:

- **Q: How do I know which accessories are compatible with my DS8178 Imager?**

A: Refer to the user manual or contact Zebra Technologies support for guidance on compatible accessories for your specific model.

- **Q: Can I use third-party mounting hardware with my scanner?**

A: While Zebra Technologies offers mounting hardware, you can also explore third-party options. Ensure compatibility and quality before using third-party accessories.

DS8178 and DS8178-HC Series Imagers

Accessory Guide

ZEBRA and the stylized Zebra head are trademarks of Zebra Technologies Corp., registered in many jurisdictions worldwide. All other trademarks are the property of their respective owners. ©2021 Zebra Technologies Corp. and/or its affiliates. All rights reserved.

Customize Your Solution With A Full Range Of Accessories



We offer a choice of power supplies, battery packs, capacitors, USB adapters, mounts and holsters to fit every barcode scanning need. Enhance productivity for your workforce with accessories designed to complement and enhance scanner operation. Part numbers may vary by region.

Charge / Communication Cradles

- **Presentation Cradle**

- Holds scanner upright and if presentation scanning is enabled on the scanner, automatically switches between presentation scanning when the scanner is in the cradle and triggered scanning when the scanner is removed.

- **Part Numbers:**

- **CR8178-PC100F4WW**

DS8178: Presentation Cradle, Bluetooth, FIPS, Midnight Black.

- **CR8178-PC100F4CN**

DS8178: Presentation Cradle, Bluetooth, FIPS, Midnight Black, China.

- **CR8178-PCM00FBWW**

DS8178: Presentation Cradle With Magnet, Bluetooth, FIPS, Healthcare White.

- **CR8178-PCM00FBWW**

DS8178: Presentation Cradle With Magnet, Bluetooth, FIPS, Healthcare White, China.



- **Standard (Desk/Wall) Cradle**

- Has two adjustments to optimize mounting vertically or horizontally.

- **Part Numbers:**

- **CR8178-SC100F4WW**

DS8178: Standard Cradle, Bluetooth, FIPS, Midnight Black.

- **CR8178-SC100F4CN**

DS8178: Standard Cradle, Bluetooth, FIPS, Midnight Black, China.

- **CR8178-SC100T4WW**

DS8178: Standard Cradle, Bluetooth, FIPS, Midnight Black, 4690 IF.

- **CR8178-SCM00FBWW**

DS8178: Standard Cradle, Bluetooth, FIPS, Healthcare White.

- **CR8178-SCM00FBCN**

DS8178: Standard Cradle, Bluetooth, FIPS, Healthcare White, China.



Document Capture Stand

- Attaches to Presentation Cradle and holds document at the correct distance from the scanner.

- **Part Number:**

- STND-DC0081W-04
- Document capture stand for use with DS8178-SR or DS8178-DL in Presentation Cradle

Battery and PowerCap™

- **Power Precision+ Smart Battery**

Part Numbers:

- **BTRY-DS81EAB0E-00**

Spare Battery for DS8178

- **SUPR-DS81E000E-00**

PowerCap™ for use with DS8178



Replacement Battery Door Covers

- **Battery Door Covers for DS8178**

- **Part Numbers:**

- **MISC-BC0081-04**

Battery Door Covers for DS8178, Black, Package of Ten

- **MISC-BC0081-0B**

Battery Door Covers for DS8178, Healthcare White, Package of Ten



Power Supplies and Line Cords

5V Power Supplies

Part Numbers:

- **PWR-WUA5V4W0XX where XX = US, BR, CN, EU, IN**

Level VI AC/DC Power Supply Wall Adapter, with Captive DC Cable and country specific adapter Clip. AC Input: 100-240V, 0.2A DC. Output: 5.2V, 1.1A, 5.7W


- **PWR-WUA5V4W0WW**

Power Supply: 5VDC, 850mA, Level VI Compliant



Wall Charger – Power Supply

PWR-WUA5V12W0XX
Power Supply-100-240 VAC, 5 V, 2.5 A with country specific plugs.



Country	Power Supply Part Number
United States	PWR-WUA5V12W0US
Great Britain	PWR-WUA5V12W0GB
Europe	PWR-WUA5V12W0EU
Australia	PWR-WUA5V12W0AU
China	PWR-WUA5V12W0CN
Argentina	PWR-WUS5V12W0AR
Brazil	PWR-WUA5V12W0BR
Korea	PWR-WUA5V12W0KR
India	PWR-WUA5V12W0IN

- **12V Power Supply**

- **Part Number:**

- PWR-BGA12V50W0WW
- Level VI AC/DC Power SupplyBrick. AC Input: 100-240V, 2.4A. DC Output: 12V, 4.16A, 50W. Requires: DC Line Cord and Country Specific AC Grounded Line Cord

- **DC Line Cord for 12V Power Supply**

- **Part Number:**

- CBL-DC-375A1-01
- DC Line Cord Allowing Connection of PWR-BGA12V50W0WW Level VI Power Supply to DS8178



Country	Three Wire AC Line Cord
Abu Dhabi	50-16000-220R: 1.8M long, CEE 7/7 plug
Australia	50-16000-217R: 1.9M long, AS 3112 plug
Bolivia	50-16000-220R: 1.8M long, CEE 7/7 plug
Brazil	50-16000-727R: 18AWG, 250V, 16A, BR (3w)
China	50-16000-217R: 1.9M long, AS 3112 plug 50-16000-257R: 1.8M long, IEC 60320 C13 plug
Dubai	50-16000-220R: 1.8M long, CEE 7/7 plug
Egypt	50-16000-220R: 1.8M long, CEE 7/7 plug
Europe	50-16000-220R: 1.8M long, CEE 7/7 plug
Hong Kong	50-16000-219R: 1.8M long, BS1363 plug
India	50-16000-669R: 1.9M long, BS 546 plug
Iran	50-16000-220R: 1.8M long, CEE 7/7 plug
Iraq	50-16000-219R: 1.8M long, BS1363 plug

Country	Three Wire AC Line Cord
Israel	50-16000-672R: 1.9M long, S132 plug
Italy/Chile	50-16000-671R: 1.8M long, CIE 23-16 plug
Japan	50-16000-218R: 1.8M long, NEMA 1-15P plug
Korea	50-16000-220R: 1.8M long, CEE 7/7 plug 50-16000-256R: 1.8M long, CEE7/7 plug
Malaysia	50-16000-219R: 1.8M long, BS1363 plug
New Guinea	50-16000-217R: 1.9M long, AS 3112 plug
Russia	50-16000-220R: 1.8M long, CEE 7/7 plug
Singapore	50-16000-219R: 1.8M long, BS1363 plug
UK	50-16000-219R: 1.8M long, BS1363 plug
US	23844-00-00R: 7.5 feet long 50-16000-221R: 1.8M long, USA NEMA 5-15P
Vietnam	50-16000-220R: 1.8M long, CEE 7/7 plug

Mounting Hardware

- **LI4278/DS6878 to DS8178 Adapter Plate**

- **Part Numbers:**

- BRKT-AP0081W-04

Bracket – Adapter Plate for DS6878 to DS8178 Standard Cradle



- **Fastening Strips for CR8178 Cradles**

- **Part Numbers:**

- **FAST-PC0081W-Q1**

Set Of Four Adhesive Backed Hook Fastening Strips Used To Adhere One CR8178-PC or CR8178-SC Charging Communication Cradle To A Surface

- **FAST-PC0081W-25**

25 Sets Of Four Adhesive Backed Hook Fastening Strips Used To Adhere One CR8178-PC or CR8178-SC Charging Communication Cradle To A Surface



Mounting Hardware Available From Third Parties

- **Combination Scanner & Printer Mounting Bracket**

- Creative Mounting Solutions Part Number:

- **KN120G**

Mounts a DS8178 Presentation Cradle and a Zebra Printer to a monitor on a workstation or medical cart enabling both presentation scanning and hands-free scanning



- **Scanner Mounting Bracket**

- Creative Mounting Solutions Part Number:

- KN5109
- Mounts a DS8178 Presentation Cradle to a monitor on a workstation on a workstation or medical cart enabling both presentation scanning and hands-free scanning



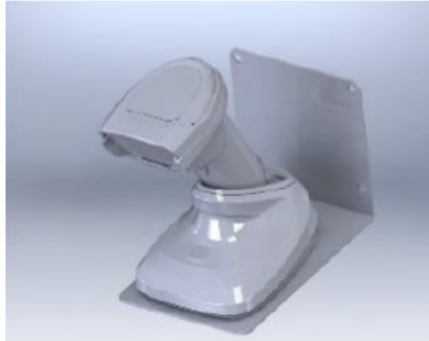
- Wall Mount for DS8178 Presentation Cradle

- **Creative Mounting Solutions Part Number:**

- KN5110
- Mounts a DS8178 Presentation Cradle to a wall enabling both presentation scanning and hands-free scanning
- Sled Holder For Consumer Devices

- **Otterbox Part Number:**

- 78-51717
- Works with Otterbox uniVERSE case to mount a consumer device atop the DS8178



AG-DS8178 Feb 19 2021

ZEBRA and the stylized Zebra head are trademarks of Zebra Technologies Corp., registered in many jurisdictions worldwide. All other trademarks are the property of their respective owners. ©2021 Zebra Technologies Corp. and/or its affiliates. All rights reserved.

Documents / Resources



[ZEBRA DS8178 Handheld Imagers](#) [pdf] User Guide
DS8178 Handheld Imagers, DS8178, Handheld Imagers, Imagers

References

- [User Manual](#)

[Manuals+](#), [Privacy Policy](#)

This website is an independent publication and is neither affiliated with nor endorsed by any of the trademark owners. The "Bluetooth®" word mark and logos are registered trademarks owned by Bluetooth SIG, Inc. The "Wi-Fi®" word mark and logos are registered trademarks owned by the Wi-Fi Alliance. Any use of these marks on this website does not imply any affiliation with or endorsement.