



Introduction to Zaptec Sense User Manual

[Home](#) » [Zaptec](#) » Introduction to Zaptec Sense User Manual 



Flip the page and it will all make sense
Introduction to Zapotec Sense
User Manual

Contents

- [1 Introduction to Zaptec Sense](#)
- [2 Important information](#)
- [3 Installation](#)
- [4 Light indicator](#)
- [5 Technical specification](#)
- [6 Documents / Resources](#)
 - [6.1 References](#)
- [7 Related Posts](#)

Introduction to Zaptec Sense

We know that houses and apartment buildings have limited power. This is why we created Zapotec Sense. It helps you utilize your power in the smartest possible way, while also protecting your circuit breakers. Charge as many electric vehicles as possible, as quickly as possible using the power available.

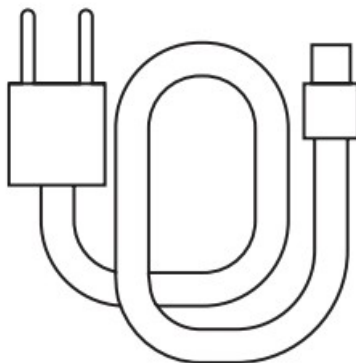
Important information

Included in the package
– Zapotec Sense

- CAT6 communication cable
- Adhesive magnet sheet
- Double-sided tape

Additional equipment (not included)

- Some AMS, e.g. Kastrup, needs an external power supply. Regular phone charger 5VDC with Micro USB-B connector can be used.



The HAN port on your smart meter is deactivated by default.

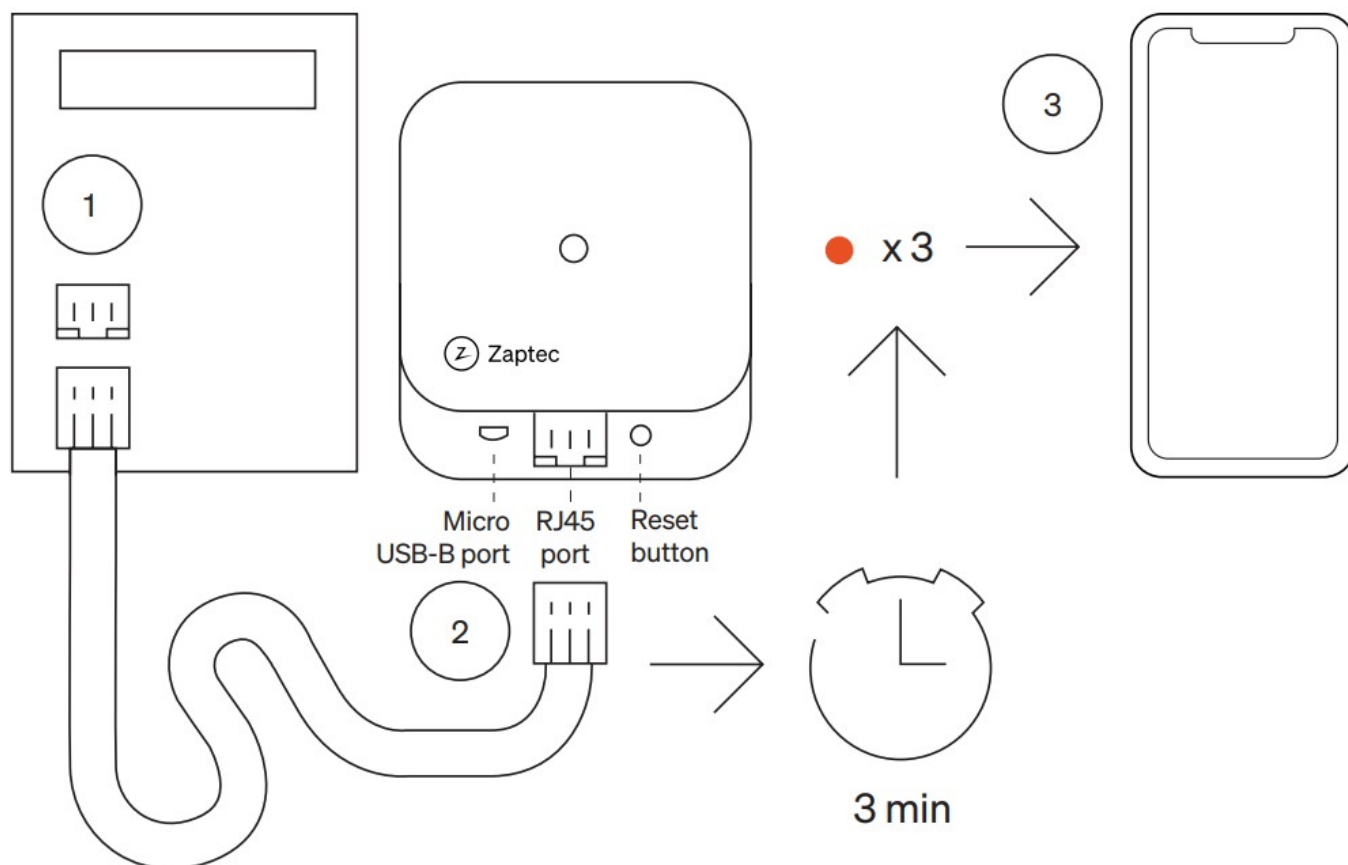
Please contact your electricity provider to activate it. Zapotec Sense can be installed when your electricity provider has confirmed that your HAN port is open.

See zaptec.com/han-port

If Zapotec Sense loses internet connectivity or is disconnected, the charging station will be set to provide minimum power (6A).

Minimum power can be changed in the Aztec portal.

Installation



1. Plug Zapotec Sense into the meter's HAN port with the included cable. While it's booting, you can grab a






coffee or move to the next step. This will take approximately 3 minutes.

2. Download and open the Zapotec app from App Store or Google Play.
3. Create an account or log in.
4. Press the icon to install Zapotec Sense, or swipe right on the home screen and press the Add new button.
Scan the QR-code on the back of this guide and follow the instructions on screen.

Configuration

To adjust network settings after installation, hold your mobile phone near the Zapotec Sense device, open the Zapotec app and press the icon to configure Zapotec Sense.

Light indicator

	Not configured. No internet connection. Log in via the Zapotec app and set up a Wi-Fi network.
	No M-bus (HAN port) data received. Check if the HAN port has been opened by your utility company.
	No IP received for Wi-Fi.
	IP received, but no contact with the cloud.
	Zapotec Sense is configured and active.

Guarantee

Your Zapotec product comes with a five (5) year guarantee at no additional cost. Please find the guarantee document at zaptec.com/guarantee

Technical specification

Mechanical and Installation					
PARAMETER	DESCRIPTION	MIN	TYP	MAX	UNIT
Dimensions	H: W: D:			58.4 58.6 251	mm
Weight	Including CAT6 cable			70	g
Altitude				2000	m
Input cable	Micro USB-B cable (Power supply)			3	m
	Unshielded CAT6 cable		1		m

Zapotec Sense is designed for indoor use

General					
PARAMETER	DESCRIPTION	MIN	TYP	MAX	UNIT
Rated voltage	Micro USB-B port	5.	5	6.	VDC
Rated voltage	RJ45 port	12		42	VDC
Rated current	Micro USB-B port	200		500	mA
Rated current	RJ45 port	6		30	mA
Standby power consumption				1	W
Ambient operating temperature		-30		40	°C

	Connectivity	
	PROTOCOL	SUPPORTED STANDARDS
Wi-Fi		IEEE 802.11b/g/n (2.4 GHz)
Bluetooth		Bluetooth V4.2 (BLE)
M-bus (HAN)		2.4 kb/s

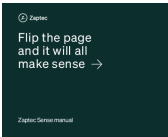
Zapotec Charger AS
Professor Olav Hansen's vie 7A
4021 Stavanger
Made in Norway



zaptec.com

© Aztec Charger AS 28.07.2022 All rights reserved. ZM000825-2

Documents / Resources

	Zaptec Introduction to Zaptec Sense [pdf] User Manual Introduction to Zaptec Sense, Introduction to, Zaptec Sense Sense
---	--

References

- ② [Smarte elbilladere for hjemmelading, borettslag og sameier - Zaptec AS](#)
- ② [Åpne tilkoblingsporten til AMS-måleren i HAN Port - Zaptec](#)