



ZALMAN Z8 MS ATX Mid Tower Computer Case User Manual

[Home](#) » [ZALMAN](#) » ZALMAN Z8 MS ATX Mid Tower Computer Case User Manual 

ZALMAN

**Z8 Z8MS Z8 TG
ATX MID-TOWER
COMPUTER CASE
User's Manual
Ver. 062321**

Contents

- [1 Z8 MS ATX Mid Tower Computer Case](#)
- [2 Precautions](#)
- [3 Characteristics](#)
- [4 Accessoires](#)
- [5 Disassembly of the side panels](#)
- [6 Documents / Resources](#)
 - [6.1 References](#)
- [7 Related Posts](#)

Z8 MS ATX Mid Tower Computer Case

- To ensure safe and easy installation, please read the following precaution.
- Product design and specifications may be revised to improve quality and performance without notice.

Developed and designed by ZALMAN in Korea.

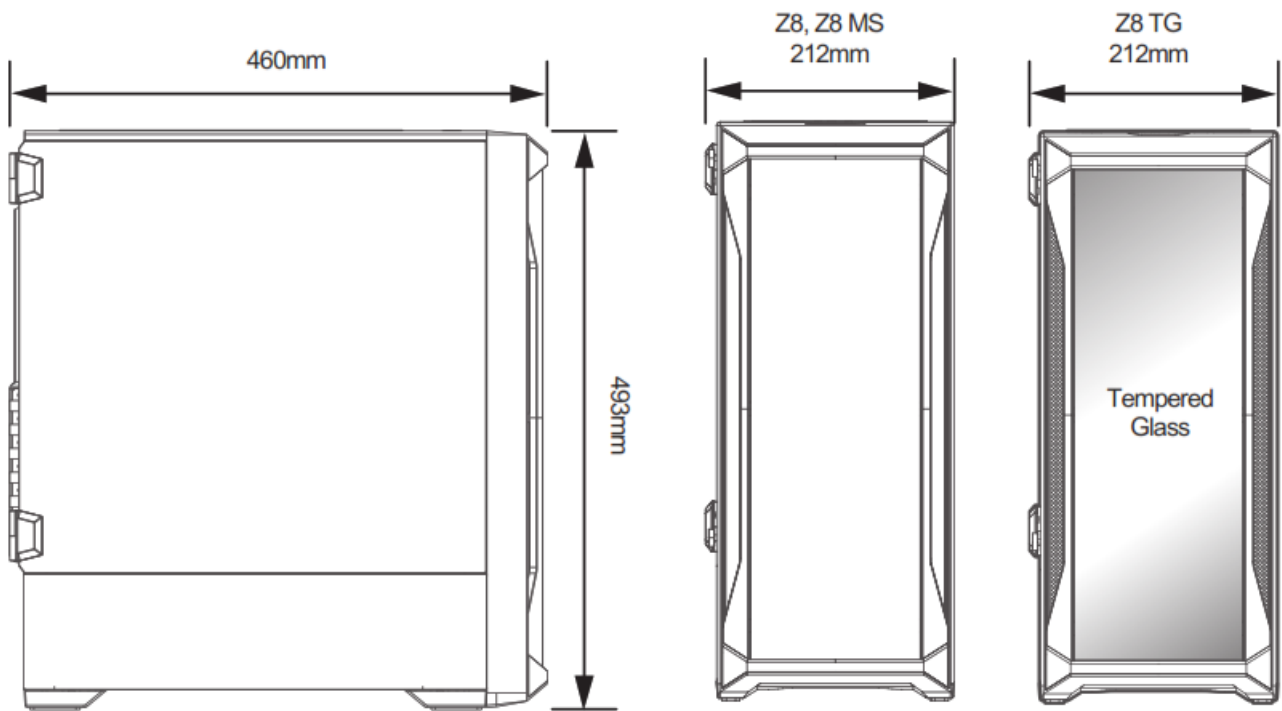
This product is protected by ZALMAN's pending or registered patents.

Precautions

- Read this manual carefully before installing.
- Check the product and components before installing. If you find any abnormality, contact the location where you purchased the product for a replacement or refund.
- Wear gloves to prevent accidents when installing the product.
- Severe damage may occur when mounting the system, so do not apply excessive force.
- Connecting the cable incorrectly may cause a fire due to a short circuit. Make sure to refer to the manual when connecting the cable.
- Be careful not to block the ventilation hole of the product when using the system.
- Avoid locations with direct sunlight, water, moisture, oil, and excessive dust. Store and use the product in a well-ventilated location.
- Do not wipe the surface of the product using chemicals. (organic solvents such as alcohol or acetone)
- Do not insert your hand or another object into the product during operation, as this may injure your hand or damage the object.
- Store and use the product out of children's reach.
- Our company assumes no responsibility for any problem that occurs due to the use of the product for purposes other than its designated purposes and/or the carelessness of the consumer.
- The exterior design and specifications of the product are subject to change without prior notice to consumers for quality improvement.

Characteristics

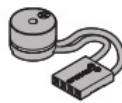
Model		Z8	I Z8 MS	I Z8 TG
Case Form Factor		ATX Mid-Tower		
Dimensions		460 x 212 x 493(H)mm		
Weight		6.3kg		I 6.8kg
Case Materials		Tempered Glass, Plastic, Steel		
Motherboard Support		E-ATX(-280mm) / ATX / mATX / Mini-ITX		
Maximum VGA Length		350mm		
Maximum CPU Cooler Height		160mm		
Maximum PSU Length		180mm		
PCI Expansion Slots		7		
Drive Bays		2 x Combo (3.5" or 2.5", Toolless), 4 x 2.5"		
Fan Support	Top	2 x 120mm / 2 x 140mm		
	Front	3 x 120mm / 3 x 140mm		
	Rear	1 x 120mm		
	Bottom	2 x 120mm (Remove SSD Brackets)		
Fan(s) Included	Front	3 x 120mm	I Addressable RGB 3 x 120mm	
	Rear	1 x 120mm		
			I ARGB Controller Included	
Radiator Support	Top	120mm / 240mm / 280mm		
	Front	120mm		
	Rear	120mm		
I/O Ports		2 x USB3.0, 1 x USB2.0, 1 x Headphone Jack, 1 x Microphone jack, Power Button, Reset Button, LED Button		



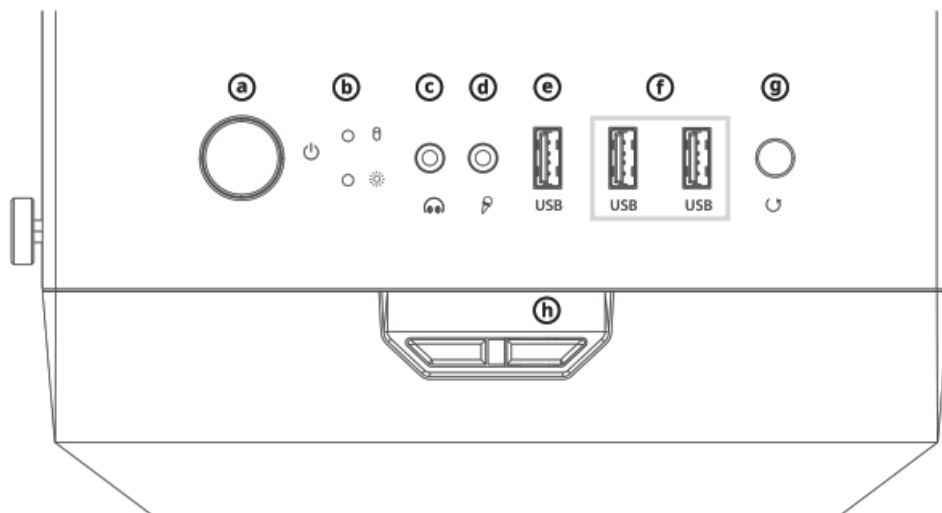
Accessoires



Manuel



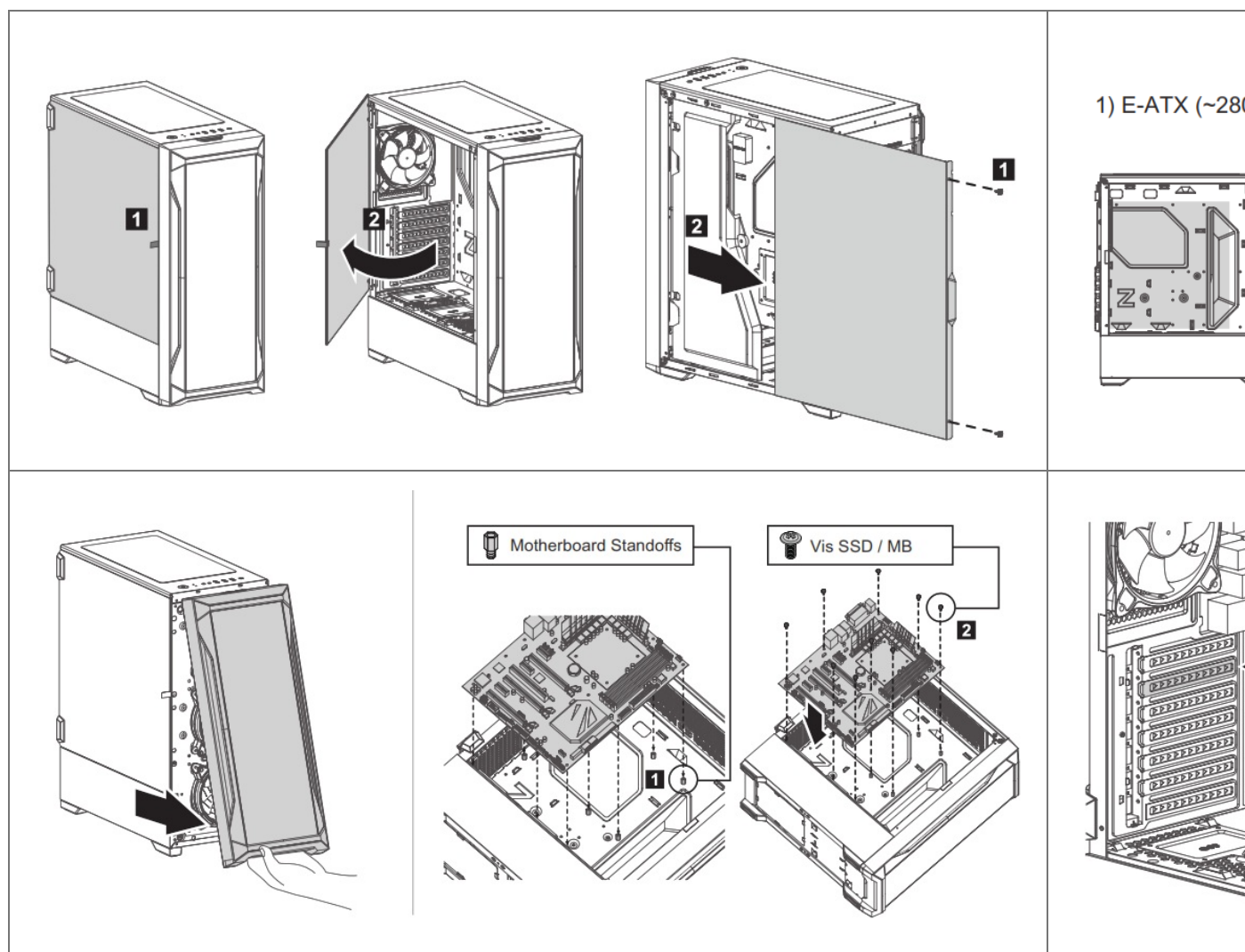
I/O Ports



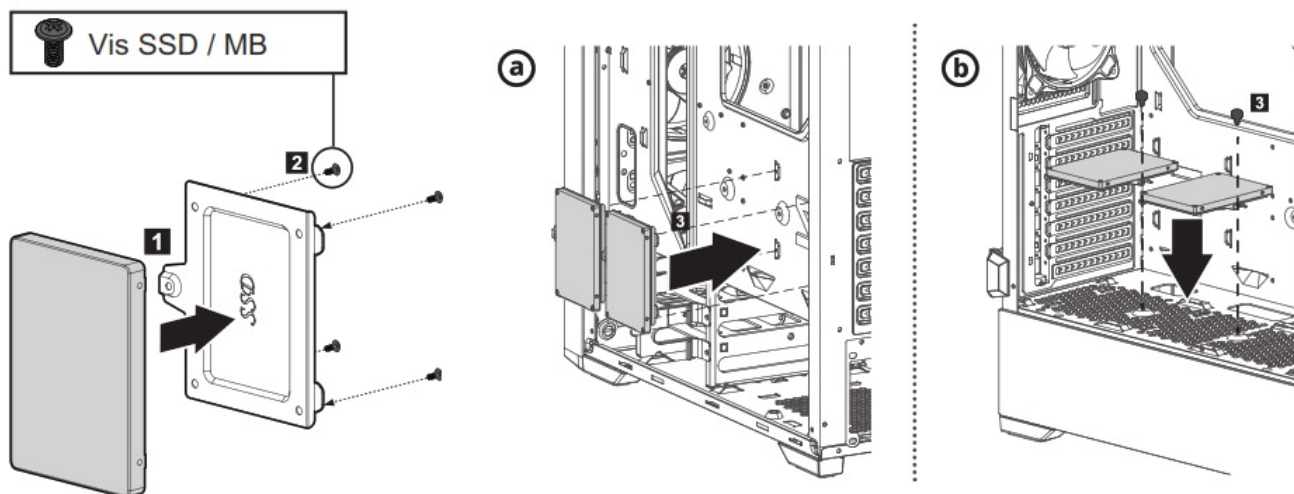
#	Part
	Power Button
	HDD / Power LED
	Headphone Jack
	Microphone Jack
	USB 2.0 Port
	USB 3.0 Ports
	Reset Button
	LED Button

Disassembly of the side panels

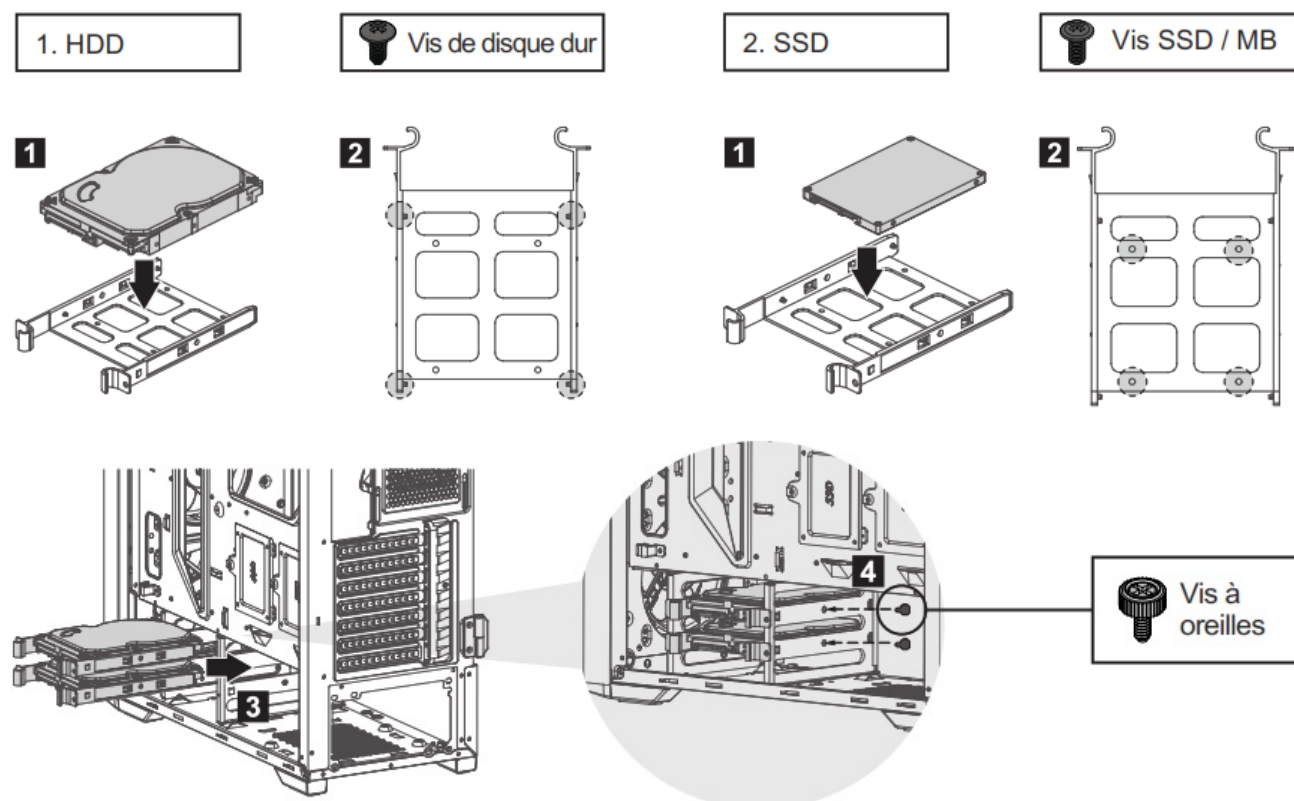
1. Tempered Glass
2. Steel Panel



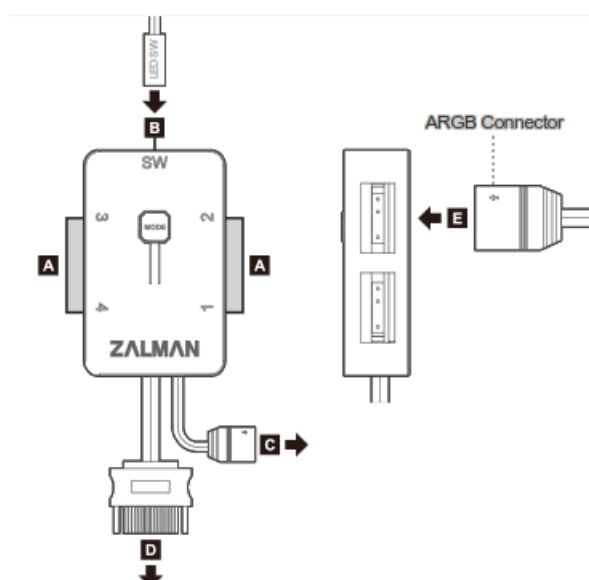
5. 2.5" double-sided mounting

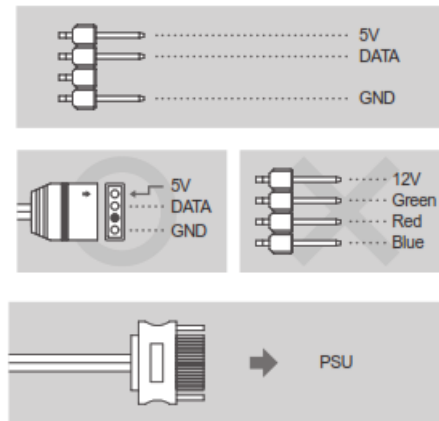


6. 3.5" away from two discos in the montage.

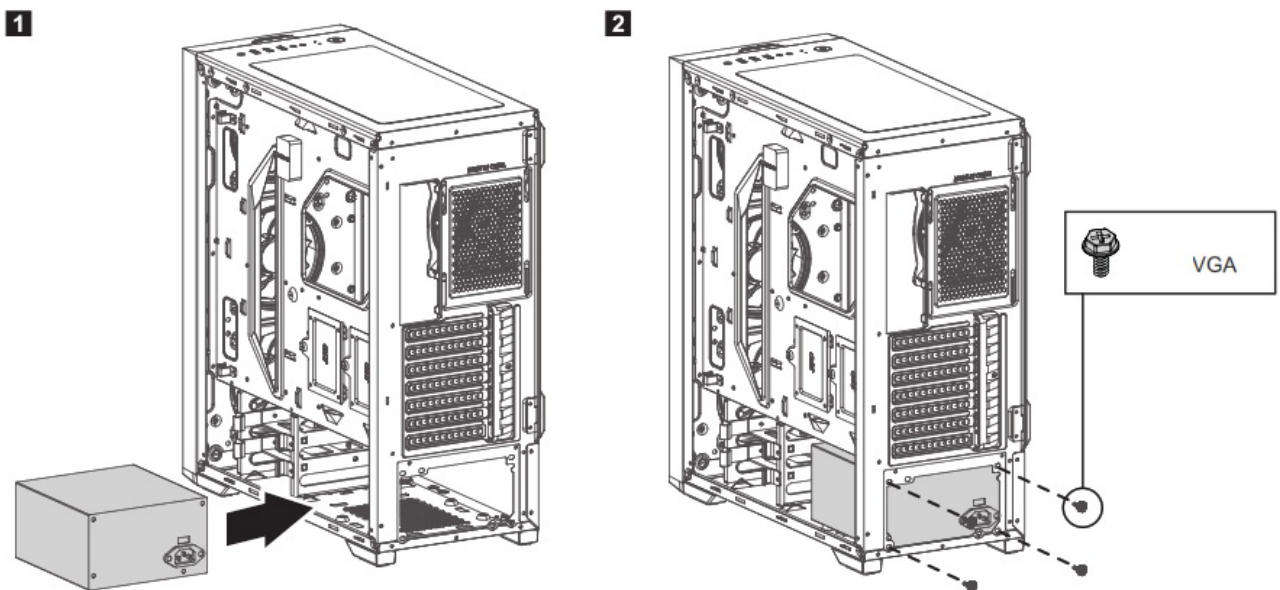


✳ Z8 MS, Z8 TG Only

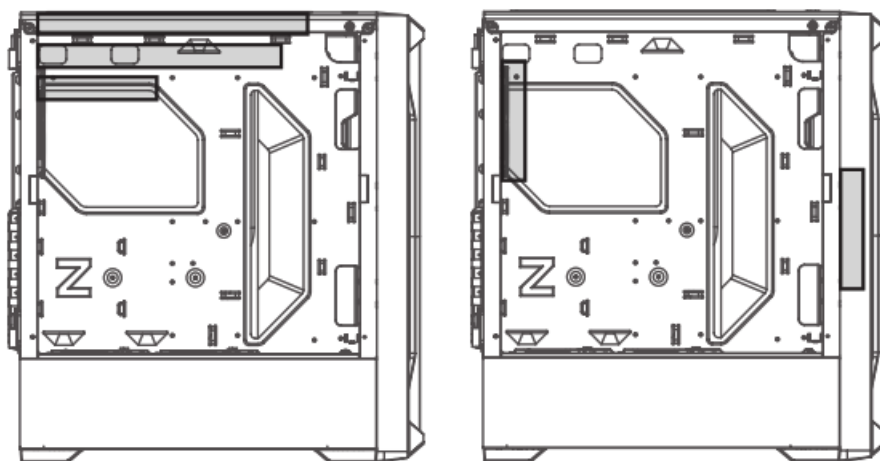




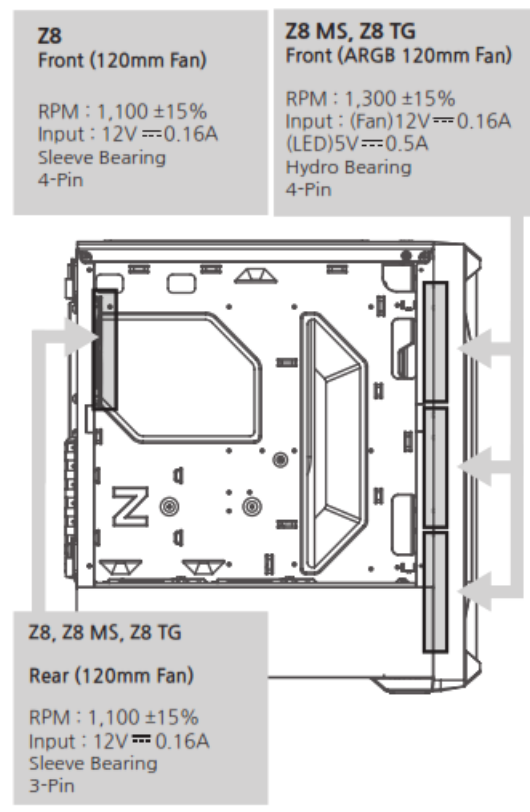
7. Two blocks of elementation in a montage



1. Mounting the top radiator
120mm 240mm 280mm
2. Mounting the front and rear radiator
120mm



9. Ventilateur (s) inclus / Ventilator characteristics



10. Installation country ventilation

1. Mounting the top & bottom fans

2 x 120mm

2 x 140mm

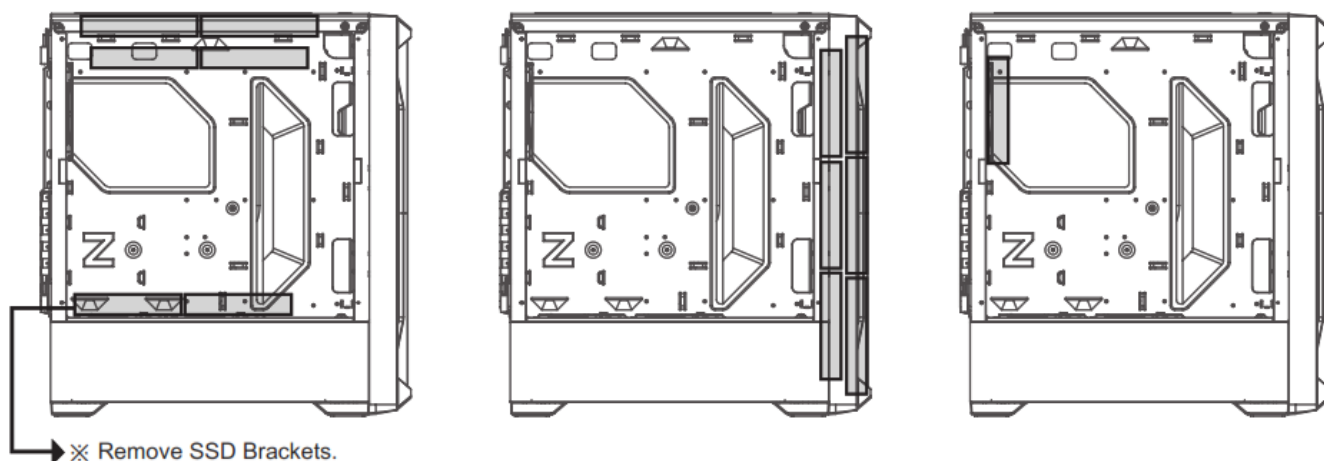
2. Mounting the front fans

3 x 120mm

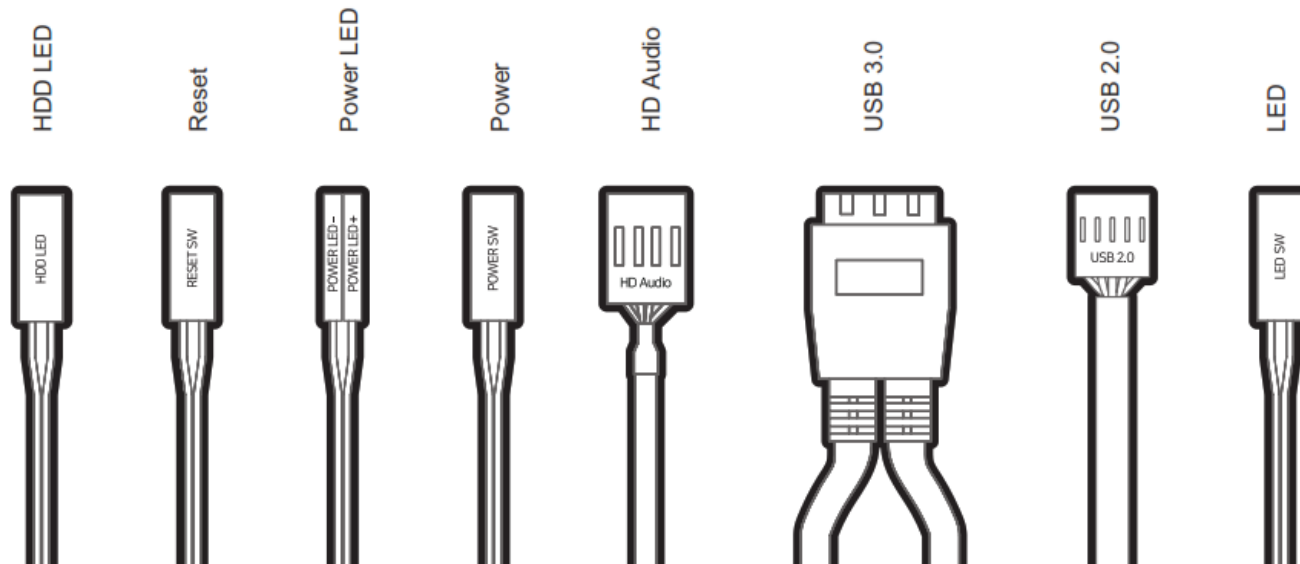
3 x 140mm

3. Mounting the rear fan

1 x 120mm



11. Connect A/s



① ②

www.zalmansvc.com



www.zalman.com

Documents / Resources

	<p>ZALMAN Z8 MS ATX Mid Tower Computer Case [pdf] User Manual</p> <p>Z8, Z8 MS, Z8 TG, Z8 MS ATX Mid Tower Computer Case, Z8, MS ATX Mid Tower Computer Case, Mid Tower Computer Case, Tower Computer Case, Computer Case, Case</p>
--	--

References

-  [zalman.com](https://www.zalman.com)

Manuals+.