



# ZALMAN T8 ATX Mid Tower Computer Case User Manual

[Home](#) » [ZALMAN](#) » ZALMAN T8 ATX Mid Tower Computer Case User Manual

## Contents [ [hide](#) ]

- [1 ZALMAN T8 ATX Mid Tower Computer Case](#)
- [2 Precautions](#)
- [3 Specifications](#)
- [4 Accessories component](#)
- [5 I/O Ports](#)
- [6 Installations](#)
- [7 Certification](#)
- [8 Documents / Resources](#)
  - [8.1 References](#)
- [9 Related Posts](#)

# ZALMAN

**ZALMAN T8 ATX Mid Tower Computer Case**

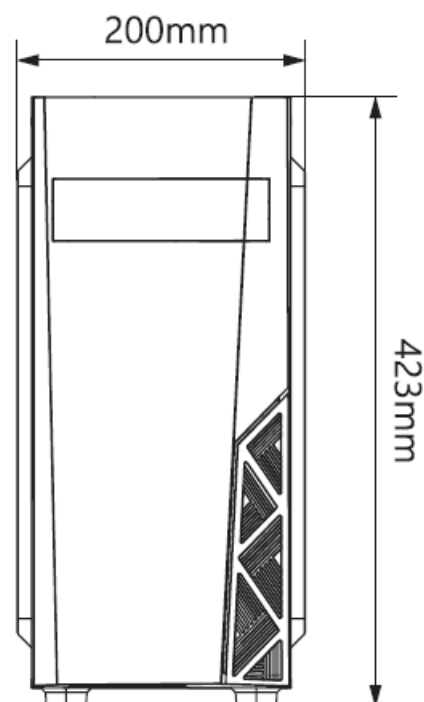
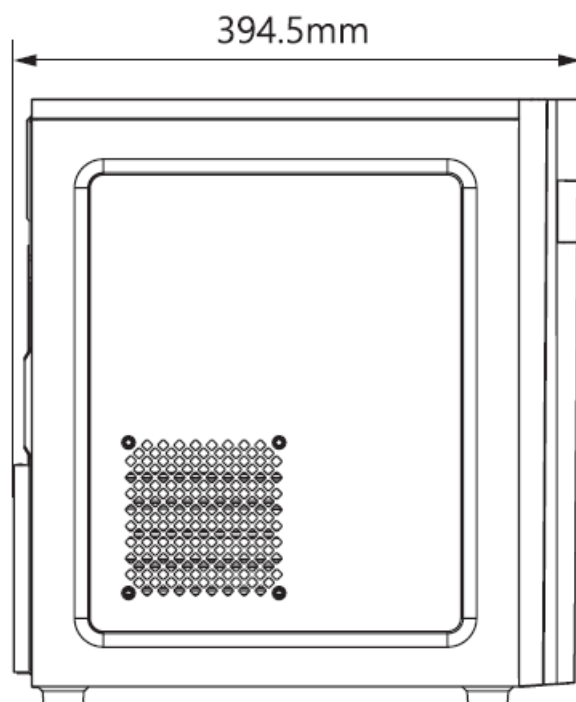


## Precautions

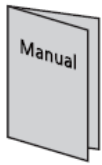
- Read this manual carefully before installing.
- Check the product and components before installing. If you find any abnormality, contact the location where you purchased the product for a replacement or refund.
- Wear gloves to prevent accidents when installing the product.
- Severe damage may occur when mounting the system, so do not apply excessive force.
- Connecting the cable incorrectly may cause a fire due to a short circuit. Make sure to refer to the manual when connecting the cable.
- Be careful not to block the ventilation hole of the product when using the system.
- Avoid locations with direct sunlight, water, moisture, oil, and excessive dust. Store and use the product in a well-ventilated location.
- Do not wipe the surface of the product using chemicals. (organic solvents such as alcohol or acetone)
- Do not insert your hand or another object into the product during operation, as this may injure your hand or damage the object.
- Store and use the product out of children's reach.
- Our company assumes no responsibility for any problem that occurs due to the use of the product for purposes other than its designated purposes and/or the carelessness of the consumer.
- The exterior design and specifications of the product are subject to change without prior notice to consumers for quality improvement.

## Specifications

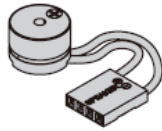
<b>Model</b>		T8
<b>Case Form Factor</b>		ATX Mid-Tower
<b>Dimensions</b>		394.5 x 200 x 423(H)mm
<b>Weight</b>		2.6kg
<b>Case Materials</b>		Plastic, Steel
<b>Motherboard Support</b>		ATX / mATX / Mini-ITX
<b>Maximum VGA Length</b>		295mm
<b>Maximum CPU Cooler Height</b>		160mm
<b>Maximum PSU Length</b>		140mm
<b>PCI Expansion Slots</b>		7
<b>Drive Bays</b>		1 x 5.25", 2 x 3.5", 4 x 2.5"
<b>Fan Support</b>	<b>Front</b>	2 x 120mm / 2 x 140mm
	<b>Rear</b>	1 x 120mm
	<b>Side</b>	1 x 120mm
<b>Fan(s) Included</b>	<b>Rear</b>	1 x 120mm
<b>Radiator Support</b>	<b>Front</b>	120mm, 240mm
	<b>Rear</b>	120mm
<b>I/O Ports</b>		Power Button, RGB LED Button, 1 x Mic, 1 x Headphone, 2 x USB2.0, 1 x USB3.0



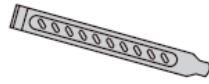
**Accessories component**



User's Manual



Buzzer



PCI Slot Cover



Cable Ties x 5



Foot Pads x 4



HDD Screws x 8



SSD / MB Screws x 17



PSU / VGA Screws x 6

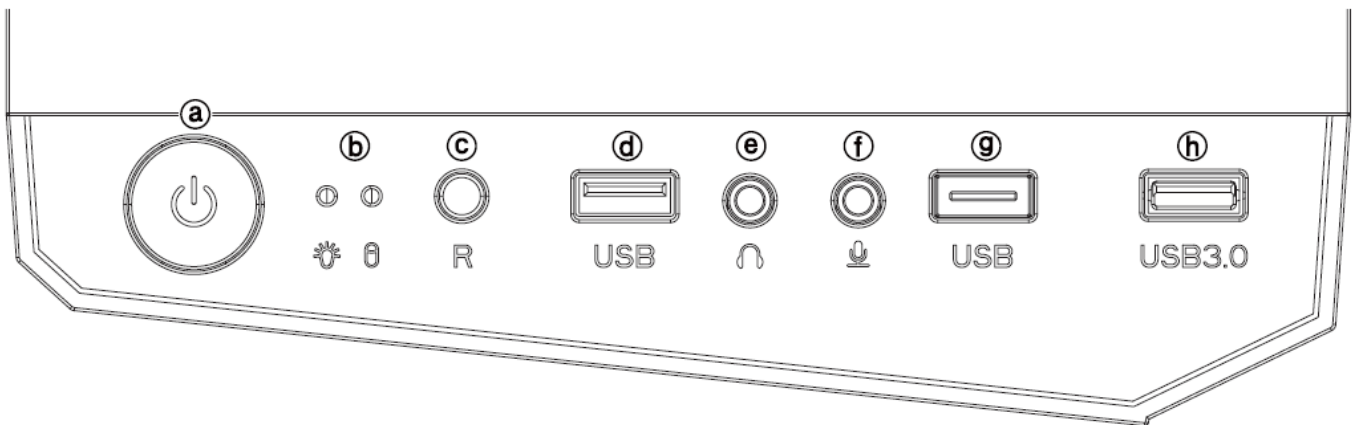


Motherboard Standoffs x 3



Spare Screws x 3

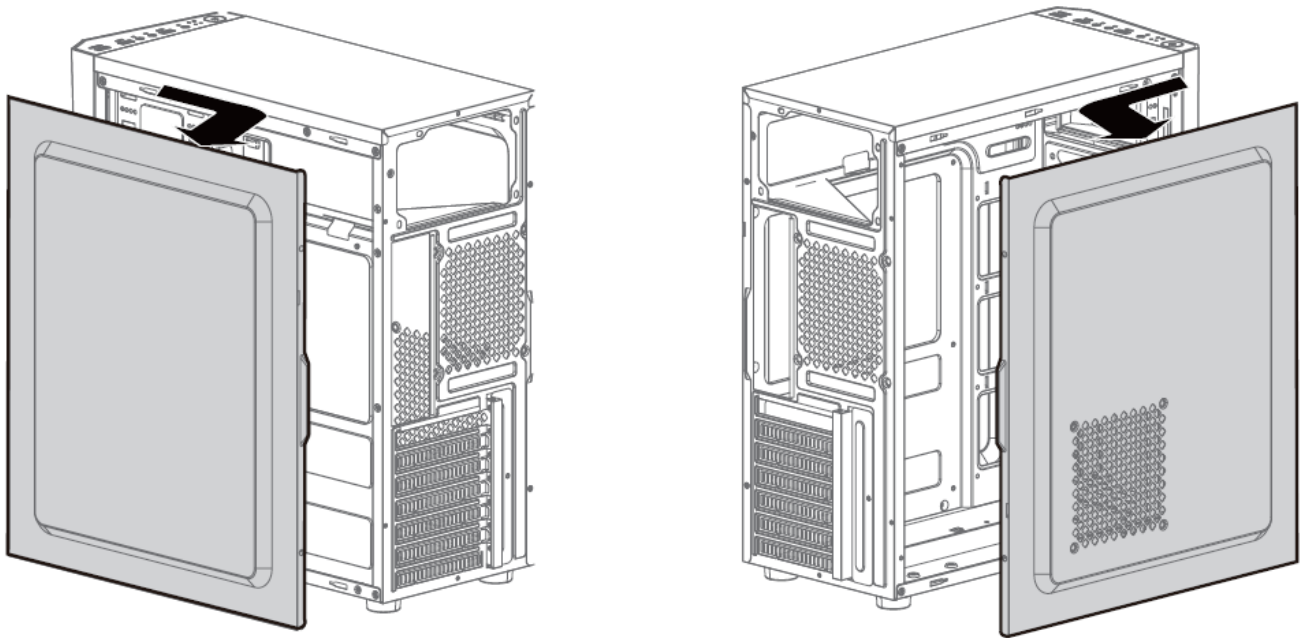
## I/O Ports



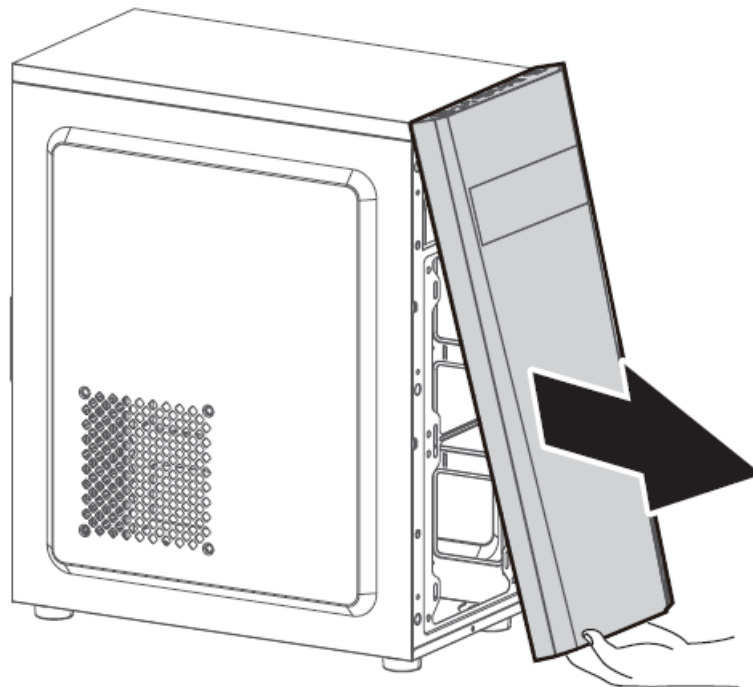
#	Part	#	Part	#	Part	#	Part
(a)	Power Button	(b)	HDD / Power LED	(c)	RGB LED Button	(d)	USB 2.0 Port
(e)	Headphone Jack	(f)	Microphone Jack	(g)	USB 2.0 Port	(h)	USB 3.0 Port

## Installations

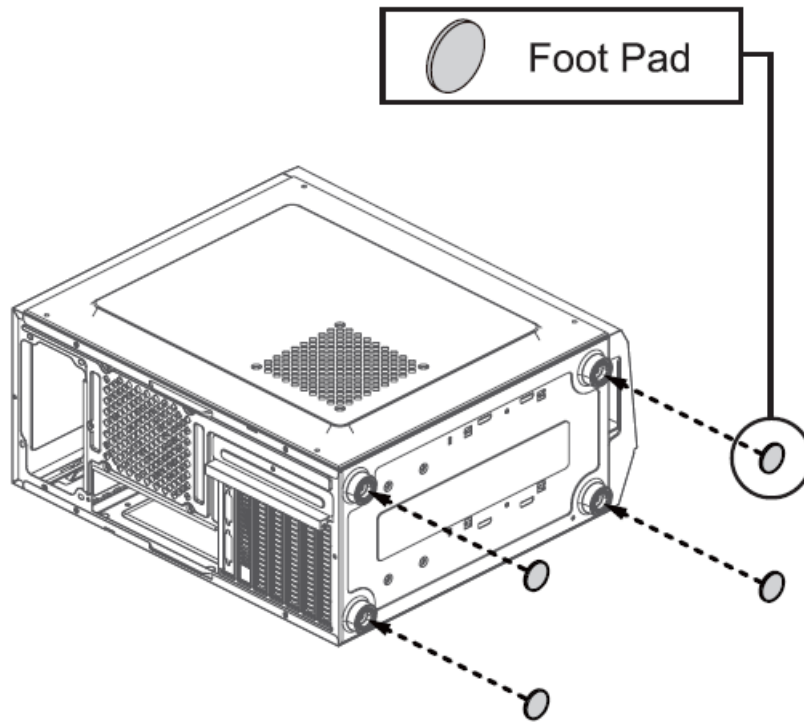
1. Removing the side panels



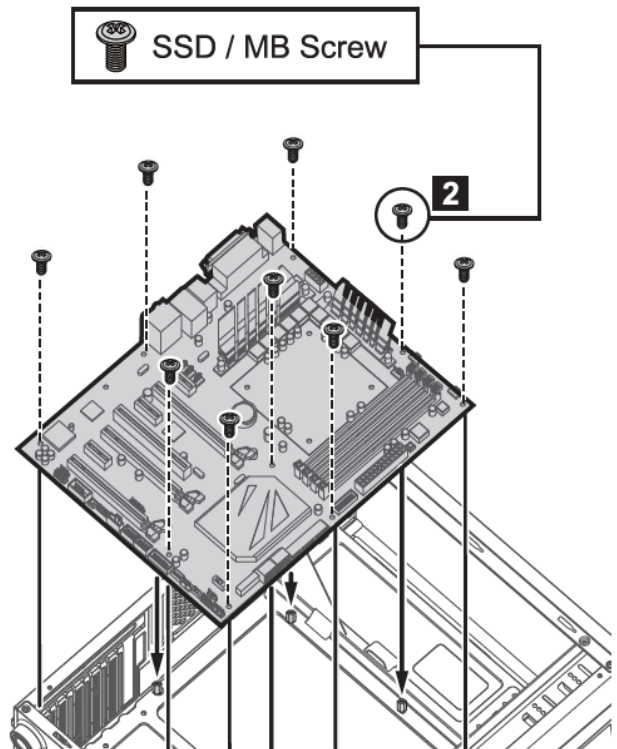
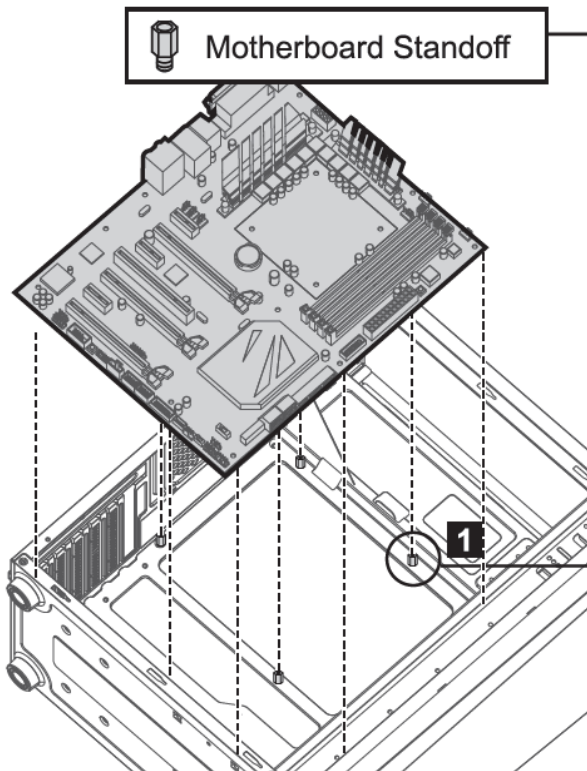
## 2. Removing the front panel



## 3. Foot Pads Installation

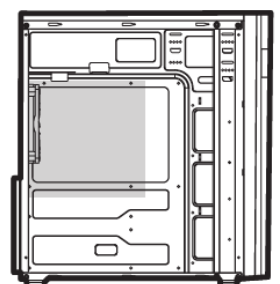
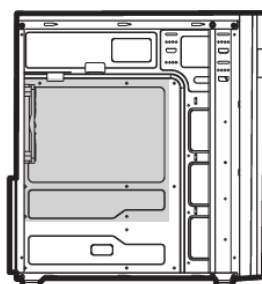
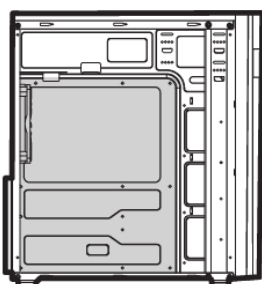


#### 4. Mounting the motherboard



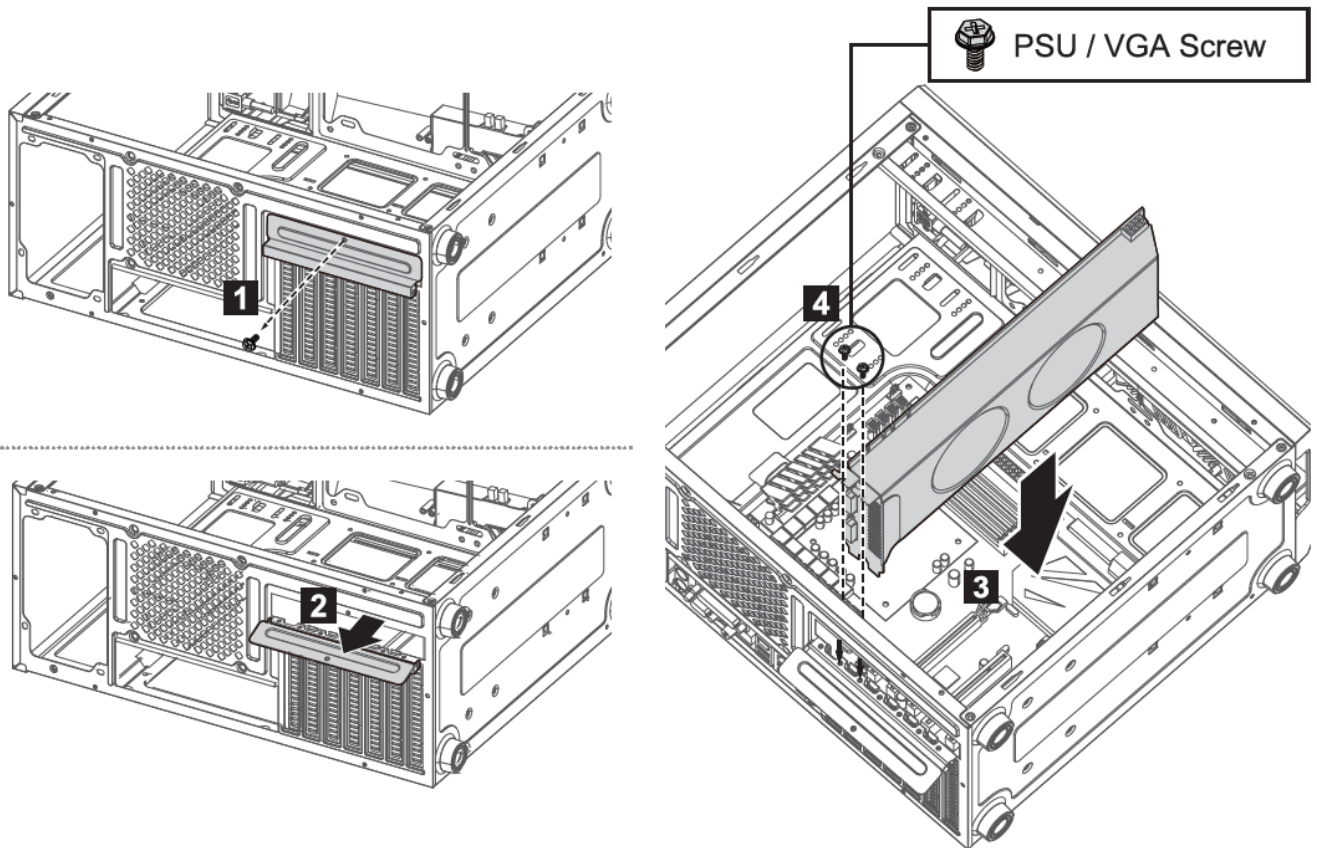
#### 1. Motherboard size

1. ATX
2. mATX
3. Mini-ITX

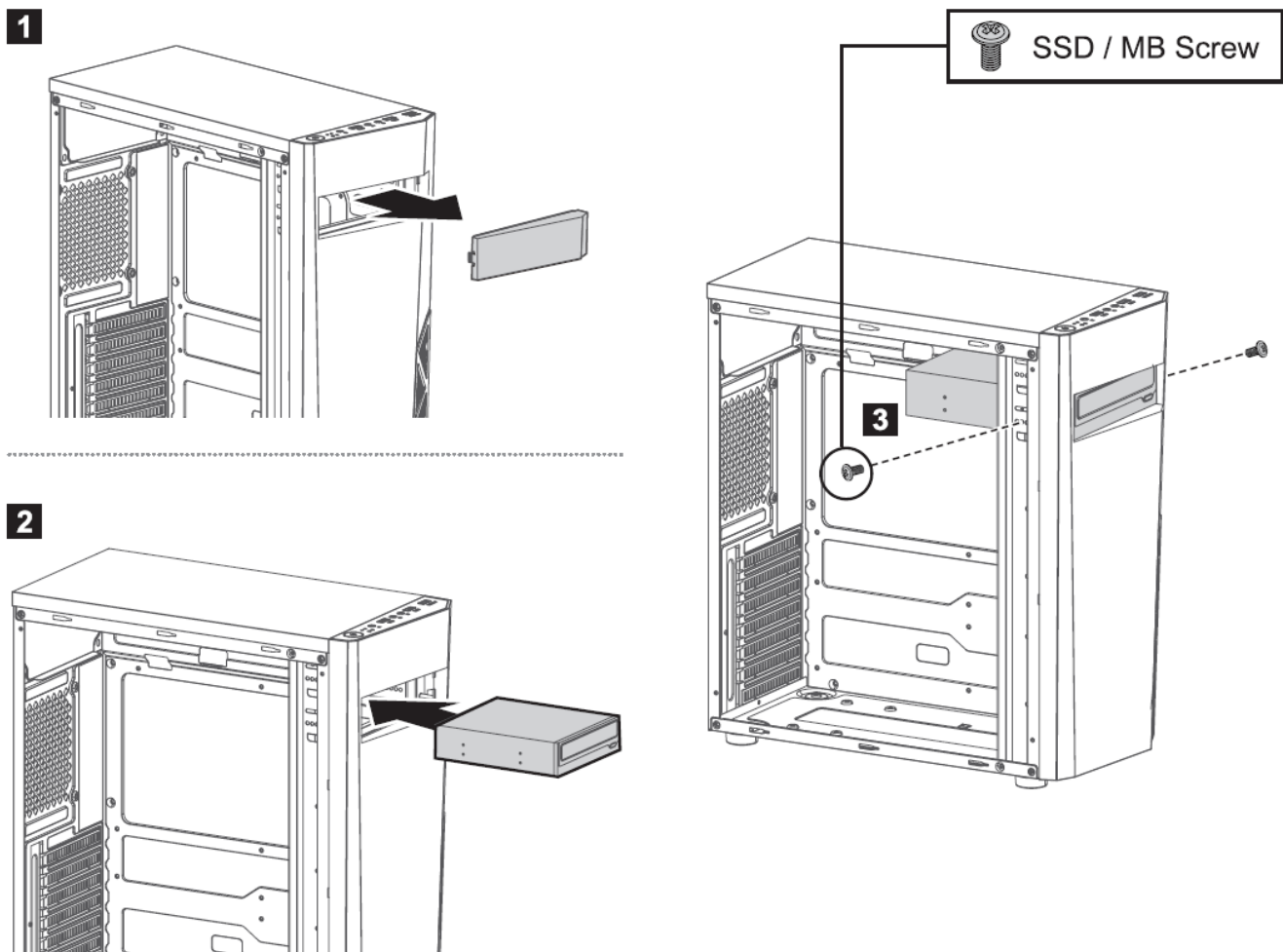




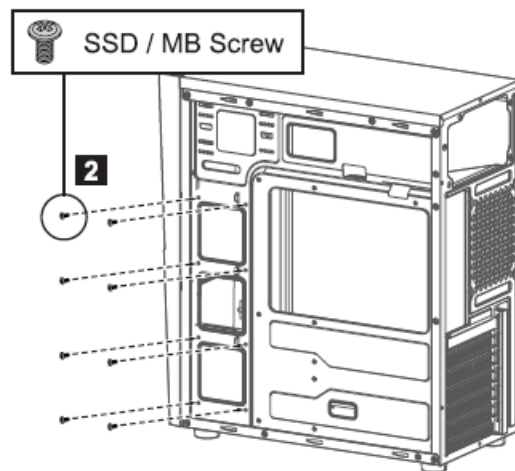
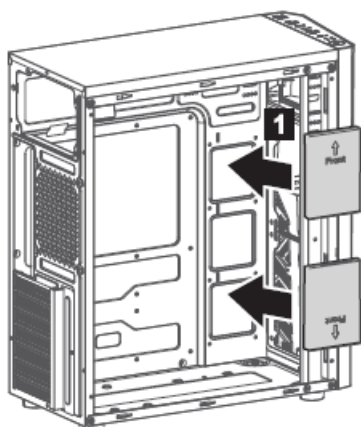
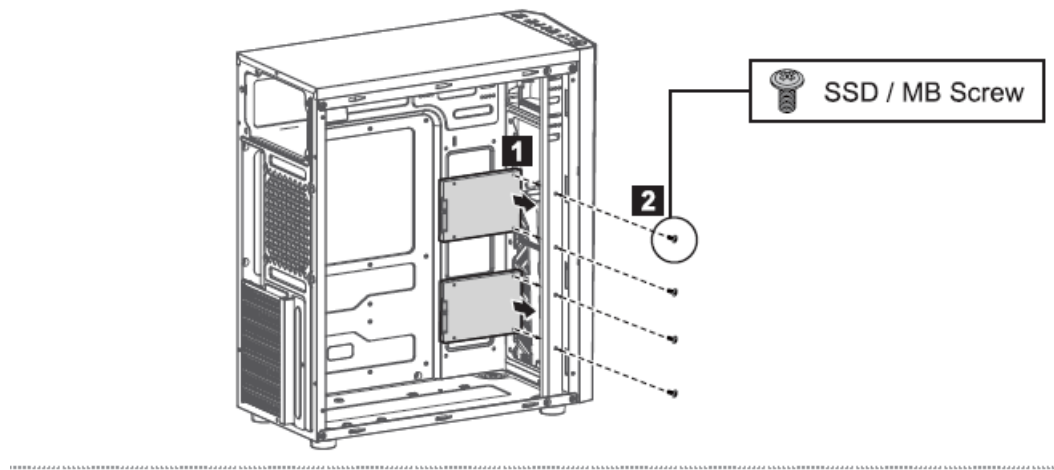
## 5. Mounting PCI-E(VGA) card



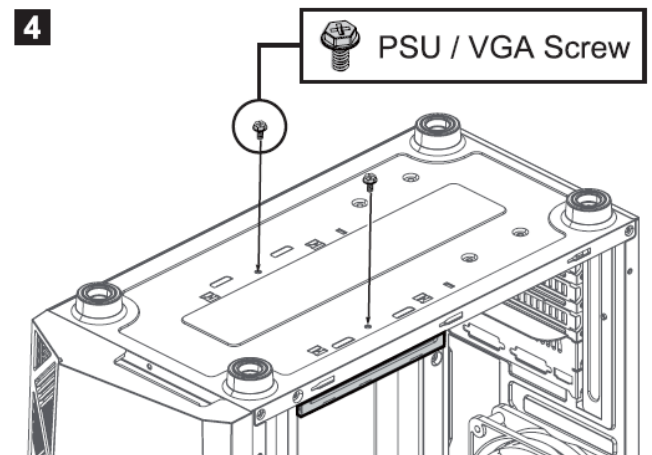
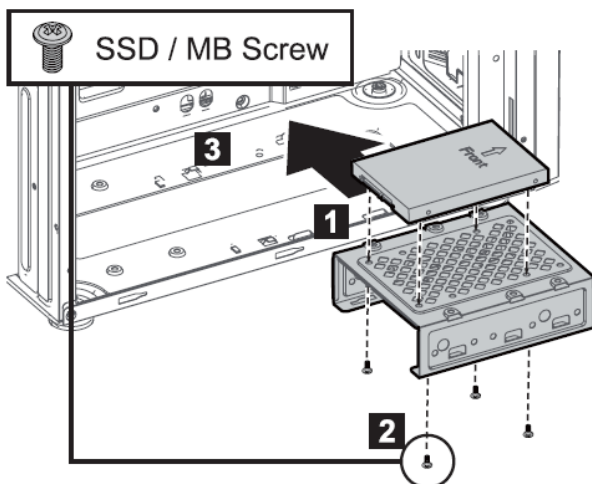
## 6. Mounting the ODD



## 7. Mounting the 2.5" SSD

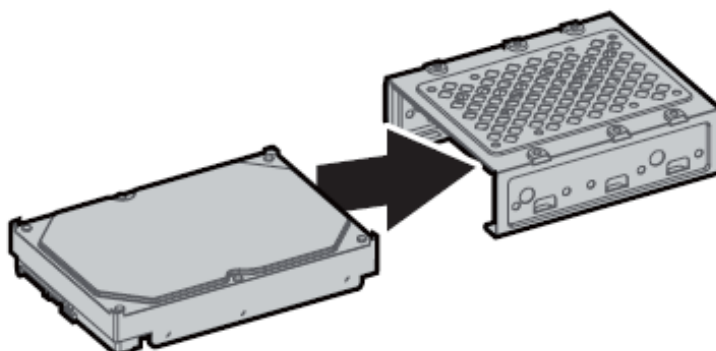


#### 8. Mounting the 2.5" SSD



#### 9. Mounting the 3.5" and 2.5" SSD / HDD

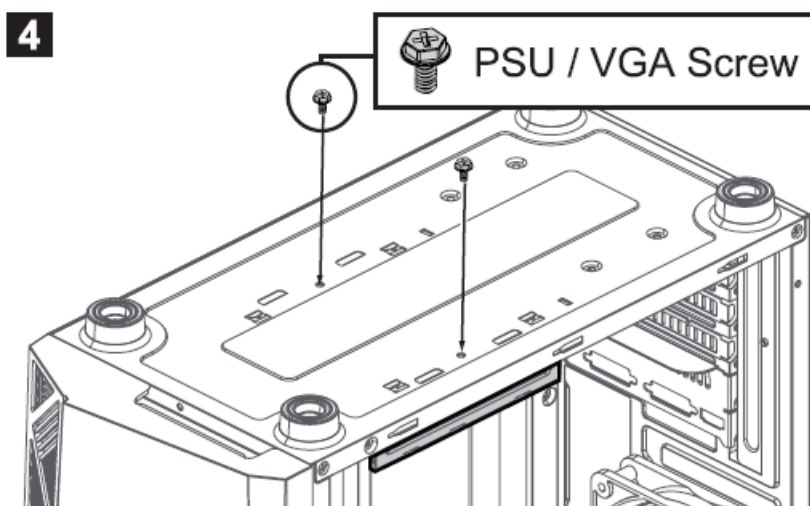
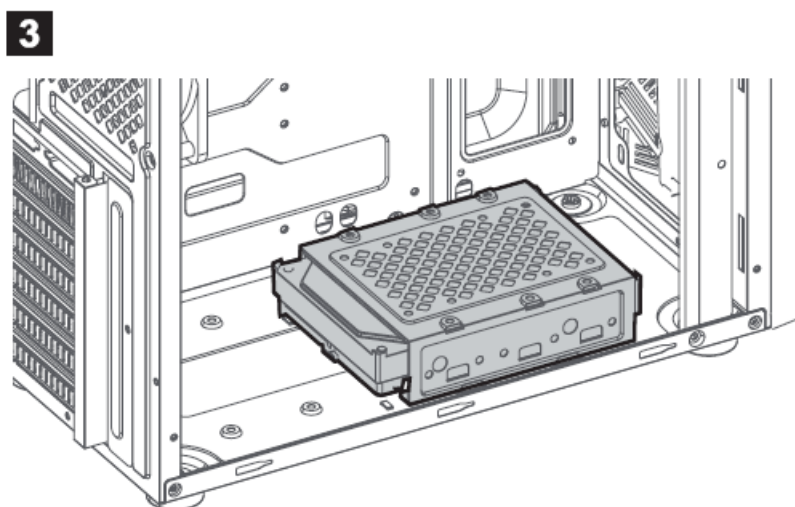
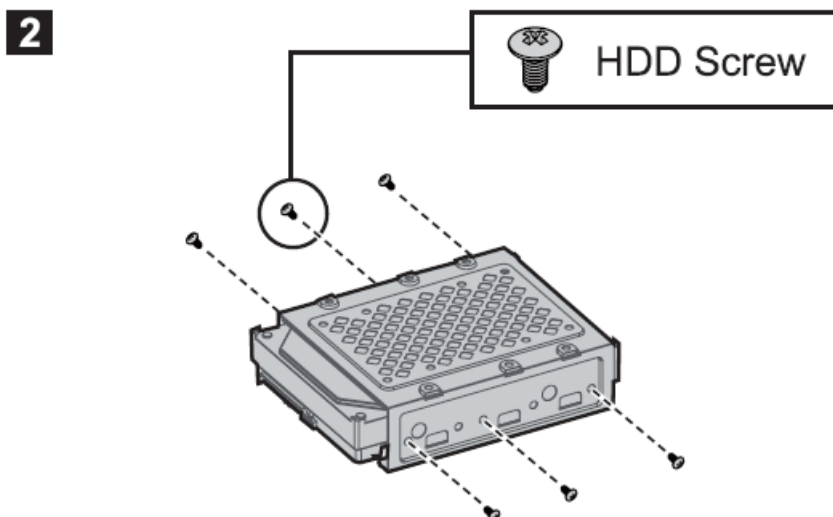
1

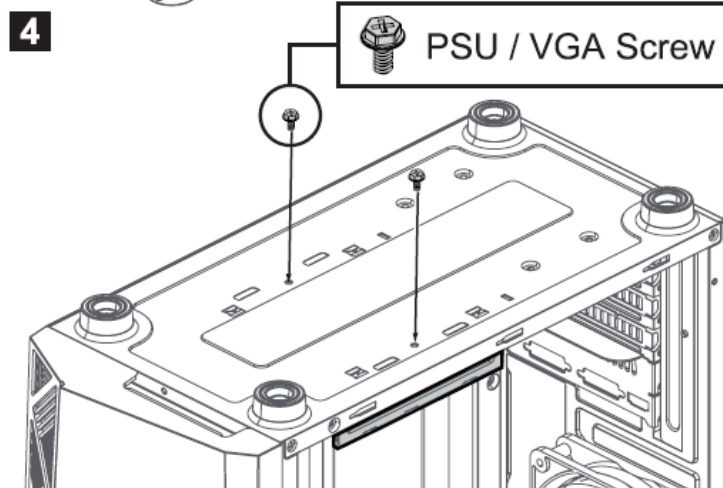
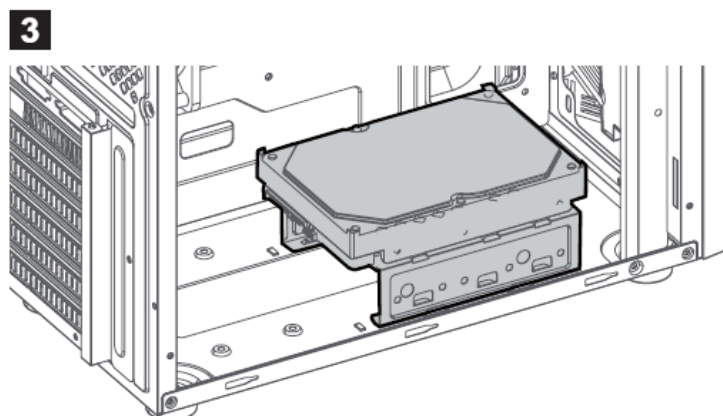
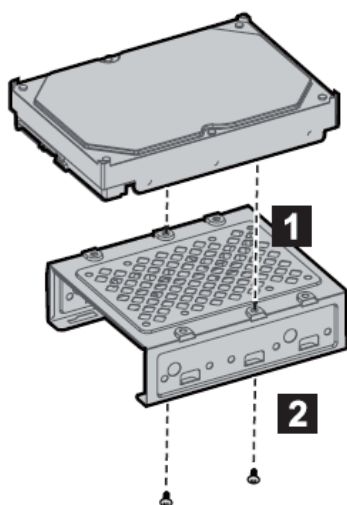


Note

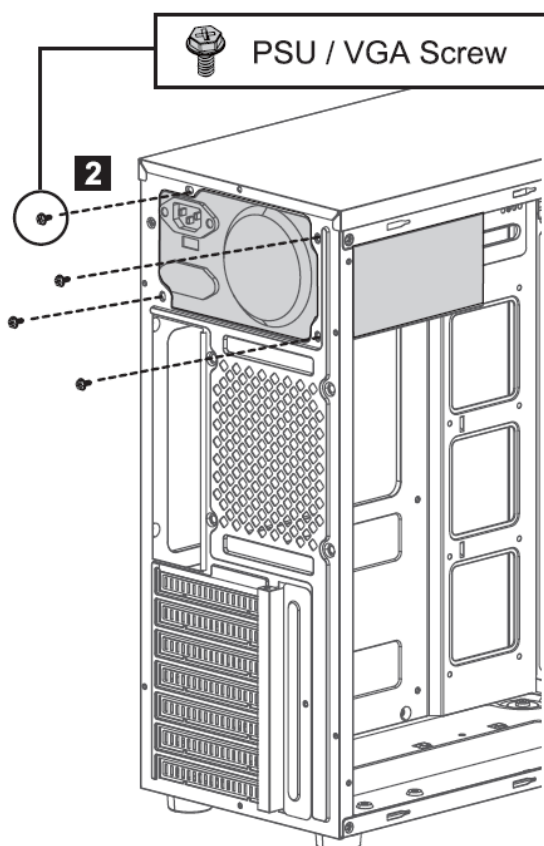
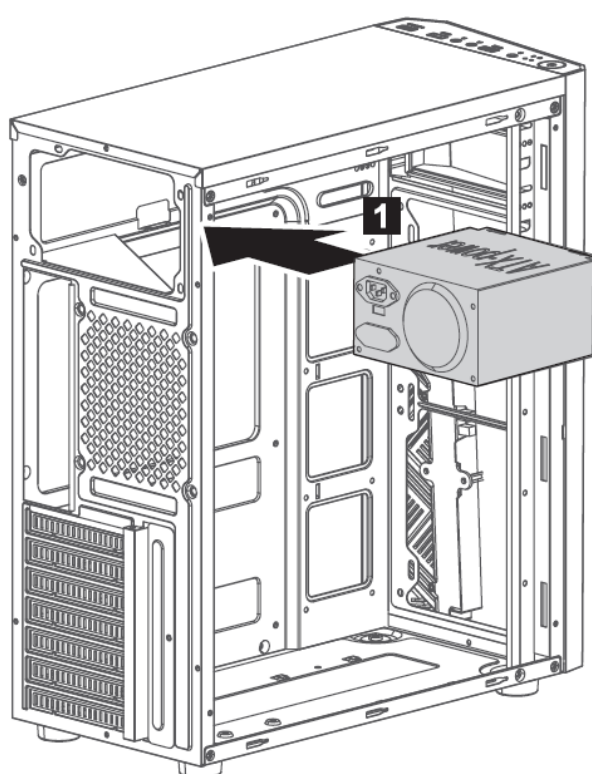


Please check the HOD size before installing. HOD higher than 25.4mm may not be properly installed in the HDD cage.





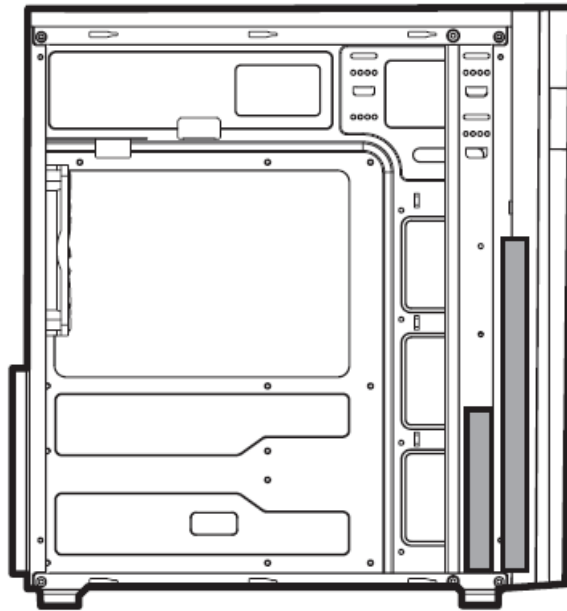
## 10. Mounting the PSU



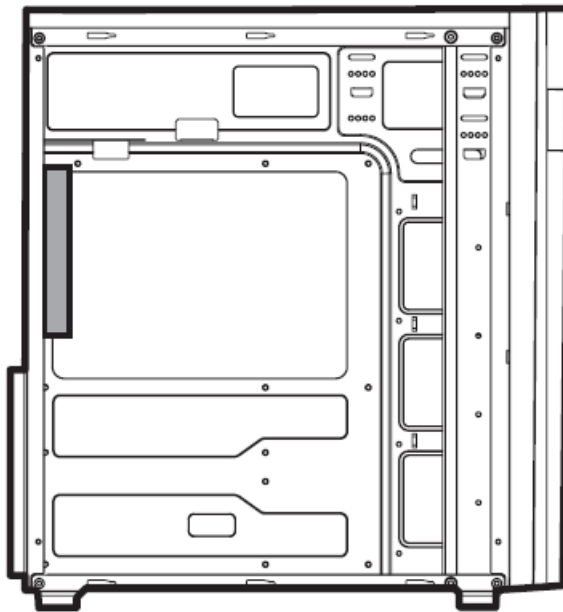
## 11. Mounting the radiator

### 1. Mounting the front radiator

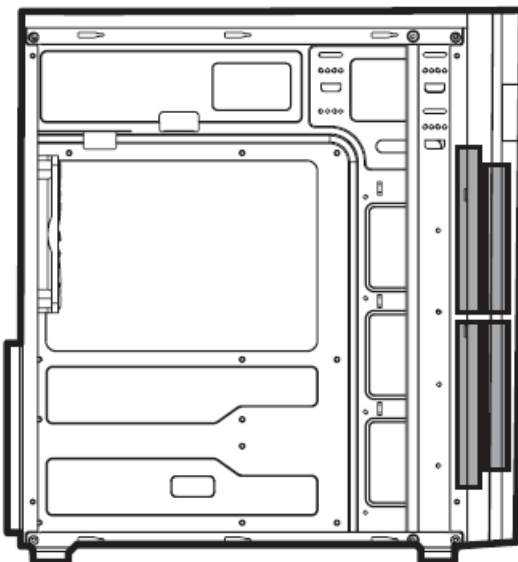
- 120mm / 240mm



2. Mounting the rear radiator
- 120mm

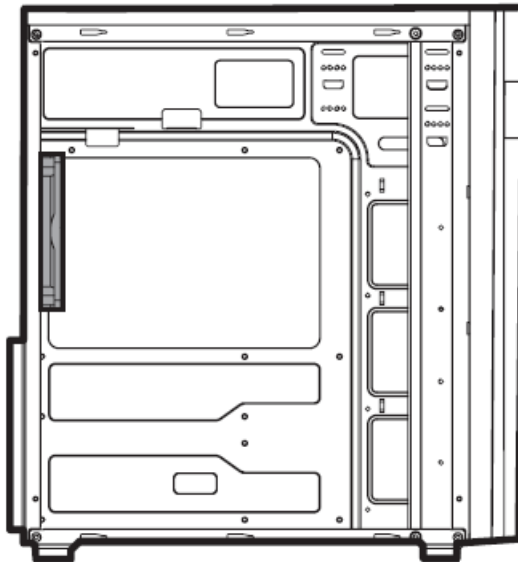


12. Mounting the fans
1. Mounting the front fans
- 120mmx2/140mmx2



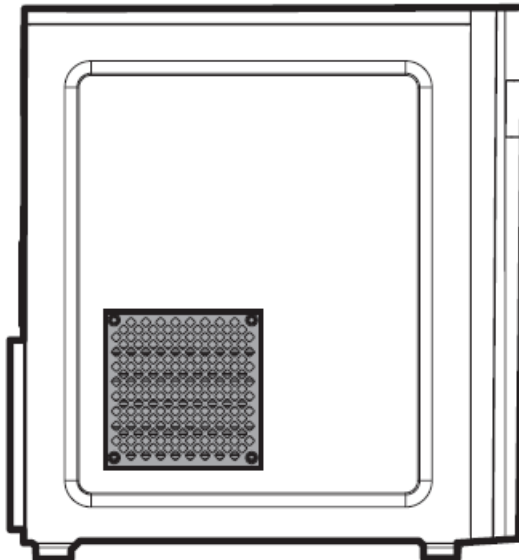
## 2. Mounting the rear fan

- 120mm

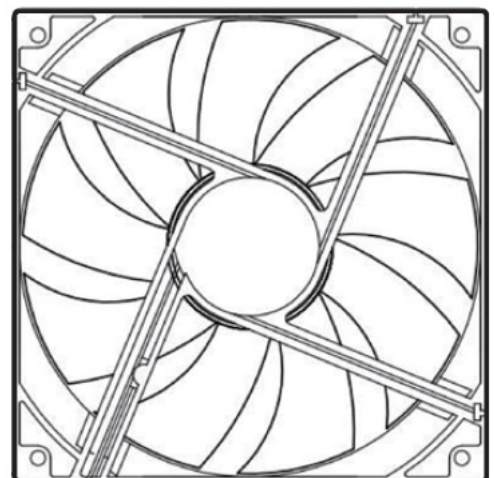
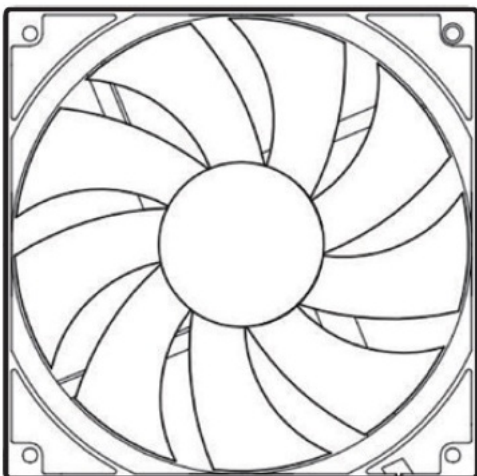


## 3. Mounting the side fan

- 120mm



## 13. Fan(s) Included / Fan Specifications

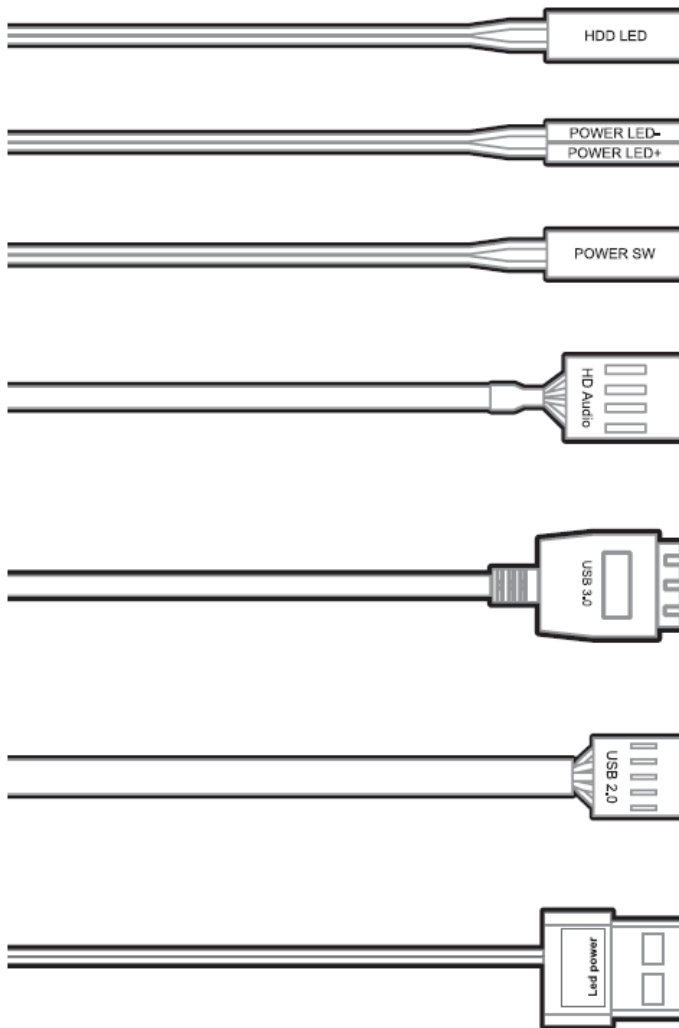


### Rear

- **Dimensions:** 120 x 120 x 25(H)mm
- **RPM:** 1,100  $\pm$ 15%

- **Fan:** DC 12V 0.15A±20%
- Sleeve Bearing
- **Power Connector:** FAN-3PIN

#### 14. I/O Connectors



HDD LED

Power LED

Power

HD Audio

USB 3.0

USB 2.0

LED Power

#### Certification

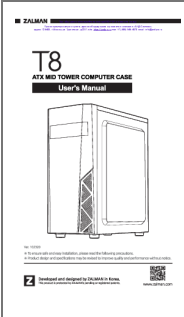
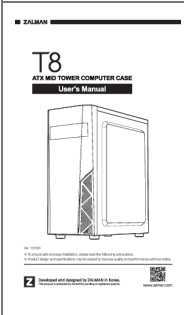
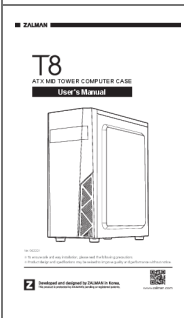
This mark, designed by Zalman, indicates product compliance with the European Union's RoHS (Restriction of Hazardous Substances) Directive.

#### Disposal of Old Electrical & Electronic Equipment

(Applicable in the European Union and other European countries with separate collection systems).

[www.zalman.com](http://www.zalman.com).

#### Documents / Resources

	<p><a href="#">ZALMAN T8 ATX Mid Tower Computer Case</a> [pdf] User Manual</p> <p>T8 ATX Mid Tower Computer Case, T8 Computer Case, ATX Mid Tower Computer Case, Computer Case, Tower Computer Case, Mid Tower Computer Case, ATX, ATX Computer Case</p>
	<p><a href="#">ZALMAN T8 ATX Mid Tower Computer Case</a> [pdf] User Manual</p> <p>T8, ATX Mid Tower Computer Case, T8 ATX Mid Tower Computer Case, Mid Tower Computer Case, Tower Computer Case, Computer Case</p>
	<p><a href="#">ZALMAN T8 ATX MID Tower Computer Case</a> [pdf] User Manual</p> <p>T8 ATX MID Tower Computer Case, T8 ATX MID, Tower Computer Case, Computer Case, Tower Case, Case, T8 Case, ATX MID Case</p>

## References

- [zalman.com](#)
- [ANDPRO.RU - интернет магазин компьютерной и офисной техники с выгодными ценами и доставкой](#)