



ZALMAN S4 Plus ATC MID Tower Computer Case User Manual

[Home](#) » [ZALMAN](#) » ZALMAN S4 Plus ATC MID Tower Computer Case User Manual 

Contents

- [1 ZALMAN S4 Plus ATC MID Tower Computer Case](#)
- [2 Precautions](#)
- [3 Specifications](#)
- [4 Accessories](#)
 - [4.1 Removing the side panels](#)
 - [4.2 Removing the front panel](#)
- [5 Mounting the motherboard](#)
 - [5.1 Motherboard size](#)
 - [5.2 Mounting the PSU](#)
- [6 Documents / Resources](#)
 - [6.1 References](#)
- [7 Related Posts](#)

ZALMAN

ZALMAN S4 Plus ATC MID Tower Computer Case

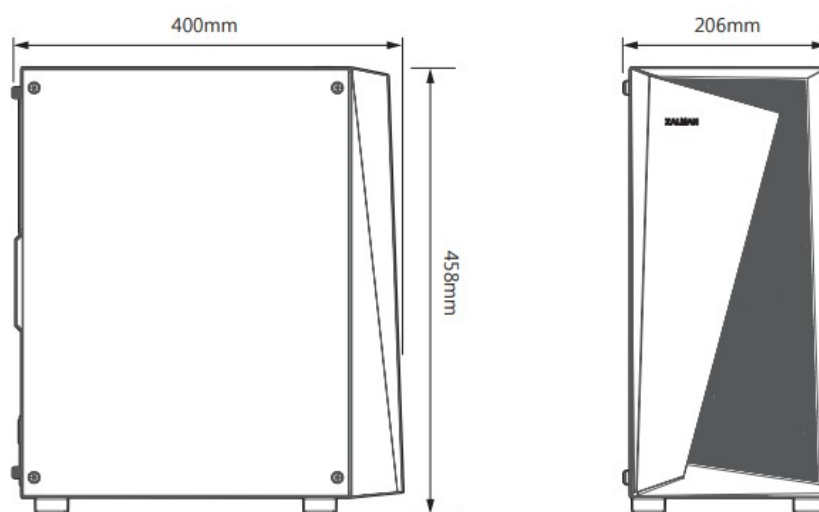


Precautions

- Read this manual carefully before installing.
- Check the product and components before installing. If you find any abnormality, contact the location where you purchased the product for a replacement or refund.
- Wear gloves to prevent accidents when installing the product.
- Severe damage may occur when mounting the system, so do not apply excessive force.
- Connecting the cable incorrectly may cause a fire due to a short circuit. Make sure to refer to the manual when connecting the cable.
- Be careful not to block the ventilation hole of the product when using the system.
- Avoid locations with direct sunlight, water, moisture, oil, and excessive dust. Store and use the product in a well-ventilated location.
- Do not wipe the surface of the product using chemicals. (organic solvents such as alcohol or acetone)
- Do not insert your hand or other object into the product during operation, as this may injure your hand or damage the object.
- Store and use the product out of children's reach.
- Our company assumes no responsibility for any problem that occurs due to the use of the product for purposes other than its designated purposes and/or the carelessness of the consumer.
- The exterior design and specifications of the product are subject to change without prior notice to consumers for quality improvement.

Specifications

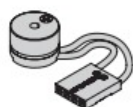
Model		S4 PLUS
Case Form Factor		ATX Mid-Tower
Dimensions		400(D) x 206(W) x 458(H)mm
Weight		3.7kg
Case Materials		Plastic, Steel
Motherboard Support		ATX / mATX / Mini-ITX
Maximum VGA Length		315mm (Without fan, Radiator)
Maximum CPU Cooler Height		160mm
Maximum PSU Length		180mm
PCI Expansion Slots		7
Drive Bays		2 x 3.5"(1 x Combo) / 1 x 2.5" SSD
Fan Support	Top	2 x 120mm
	Front	3 x 120mm
	Rear	1 x 120mm
	Bottom	2 x 120mm
Pre-Installed Fan(s)	Front	2 x 120mm (RGB)
	Rear	1 x 120mm (RGB)
Radiator Support	Front	120mm / 240mm
	Rear	120mm
I/O Ports		1 x Headphone, 1 x Mic, 2 x USB 2.0, 1 x USB 3.0, Reset Button, Power Button



Accessories



User's Manual



Buzzer



PCI Slot covers x 2



Cable ties x 5



Thumb Screws x 2



USB Rubber covers x 3



HDD Screws x 8



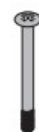
SSD / MB Screws x 22



PSU / VGA Screws x 8



Motherboard stand-offs x 6



Fan Screws x 2

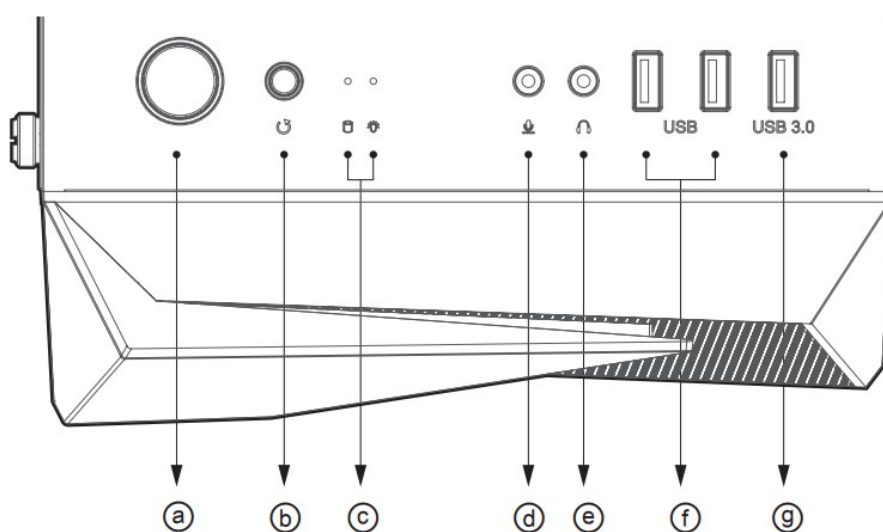


HDD Slide Screws x 2



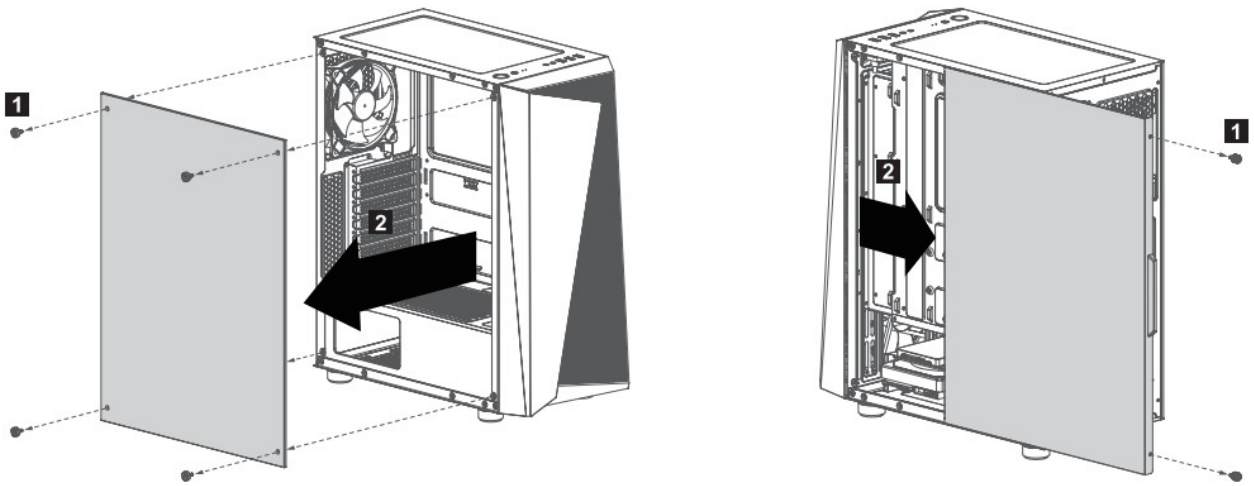
Media rubber covers x 2

I/O Ports



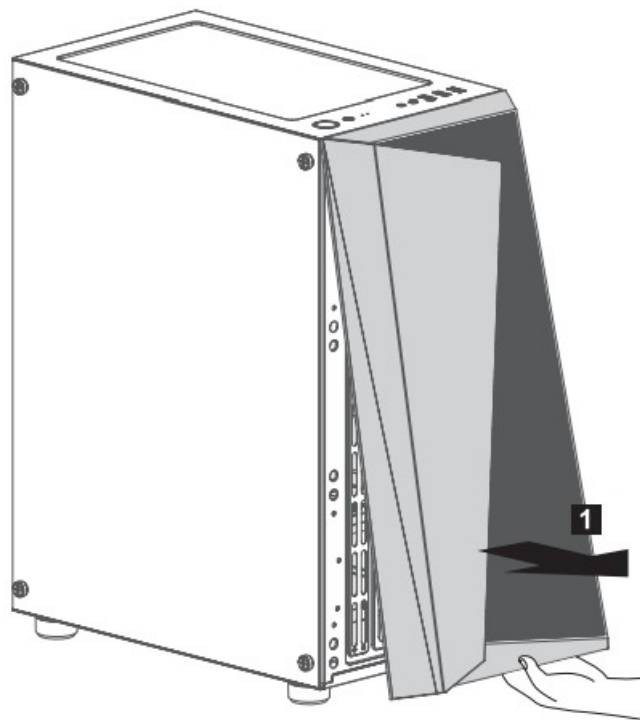
#	Part	#	Part	#	Part	#	Part
	Power Button		Reset Button		HDD/ Power L ED		Microphone Jac k
	Headphone Jack		USB 2.0 Ports		USB 3.0 Port		

Removing the side panels

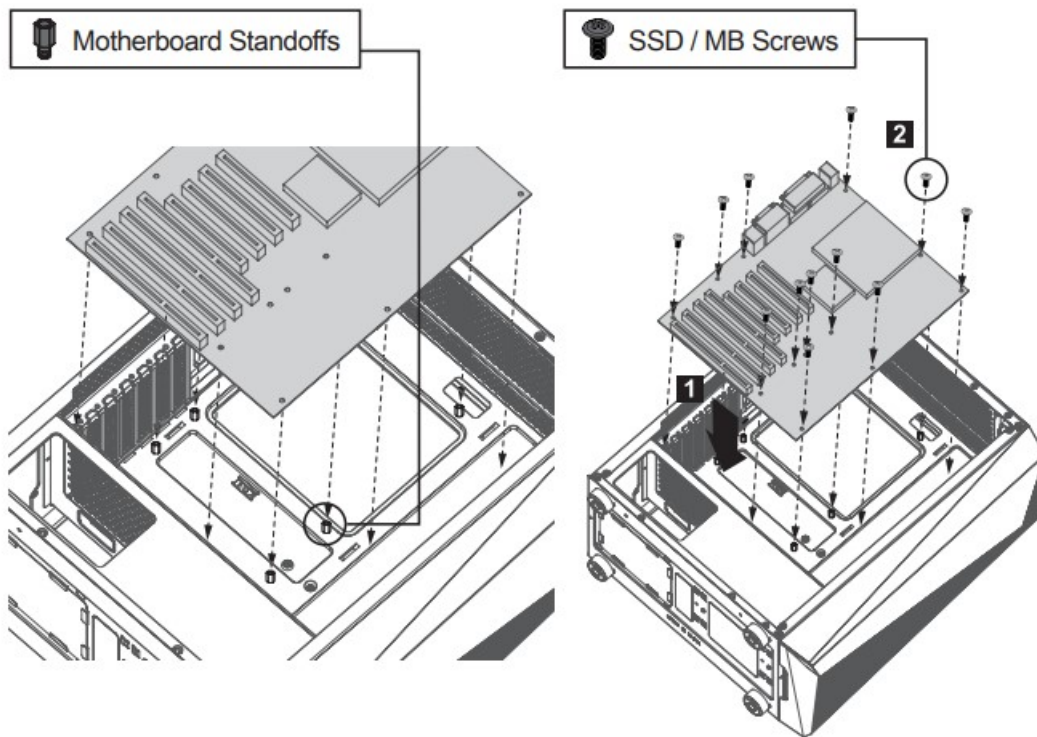


- 1. Acrylic Panel
- 2. Steel Panel

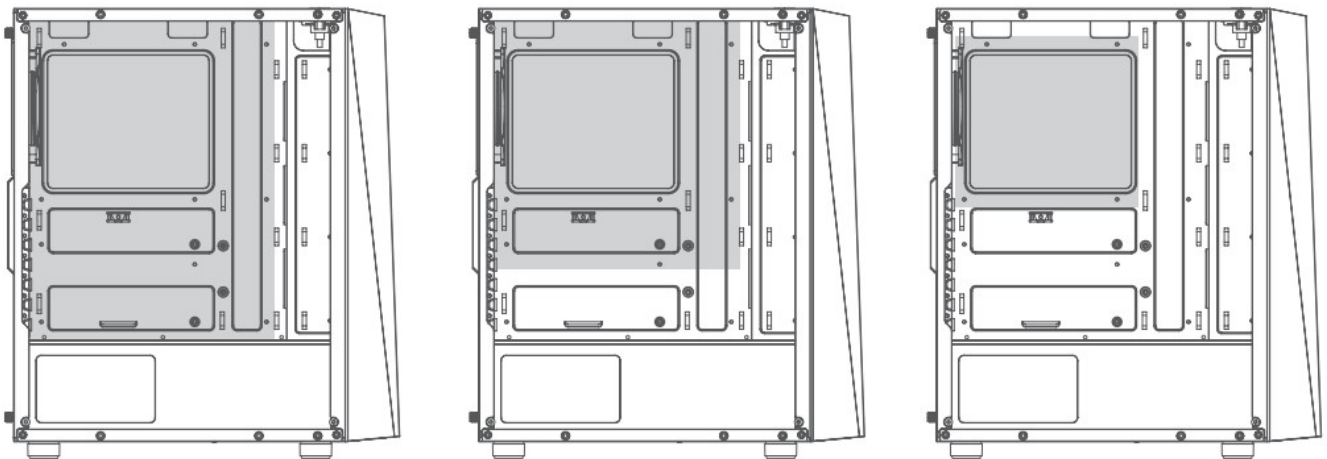
Removing the front panel



Mounting the motherboard

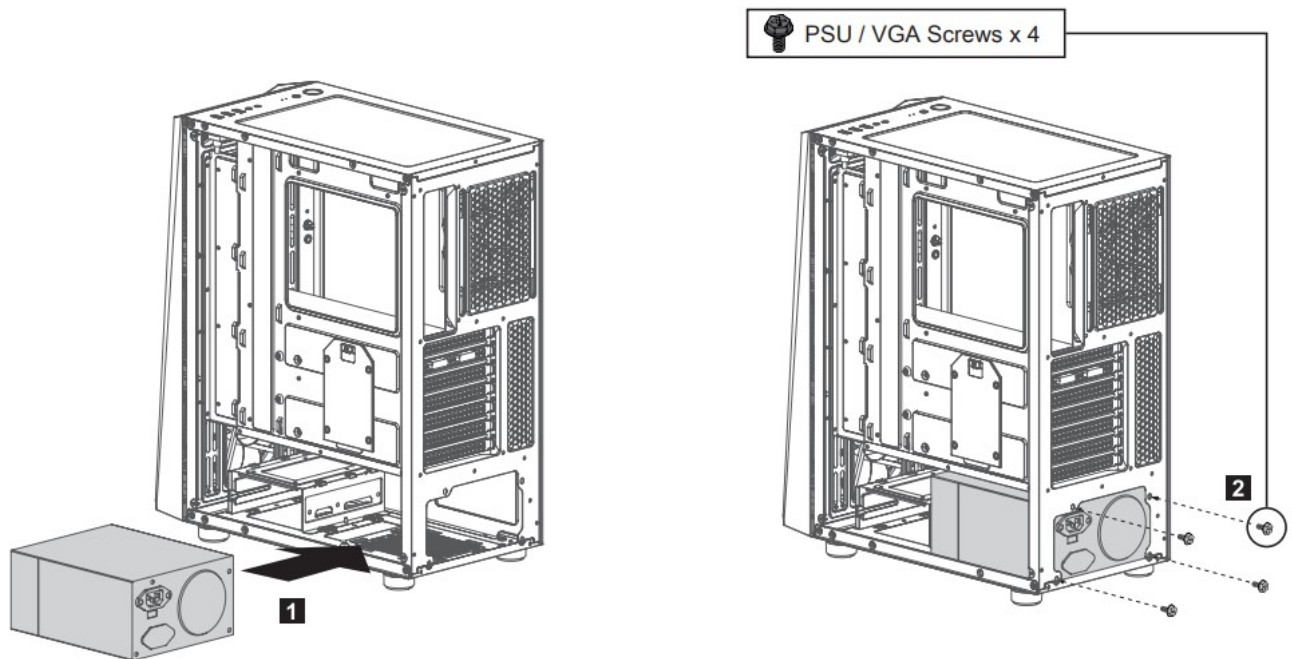


Motherboard size

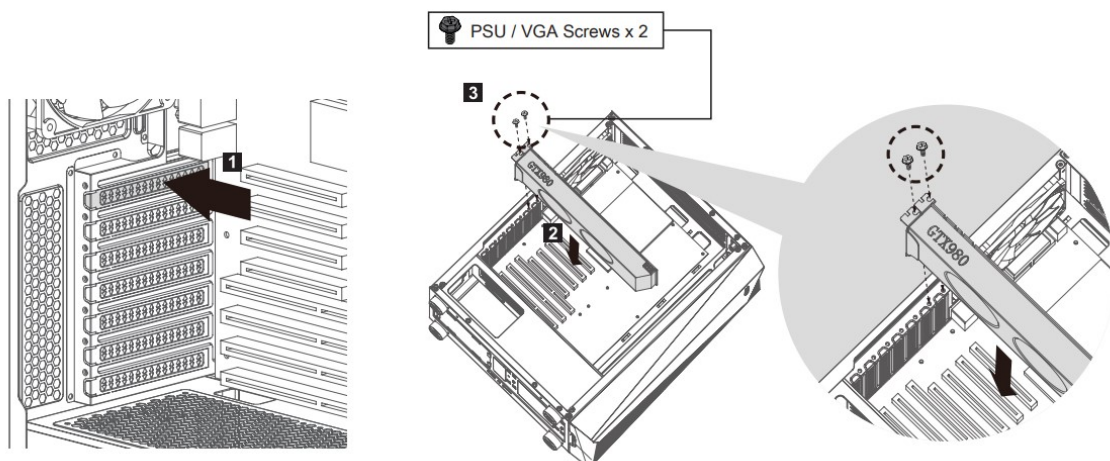


1. ATX
2. mATX
3. Mini-ITX

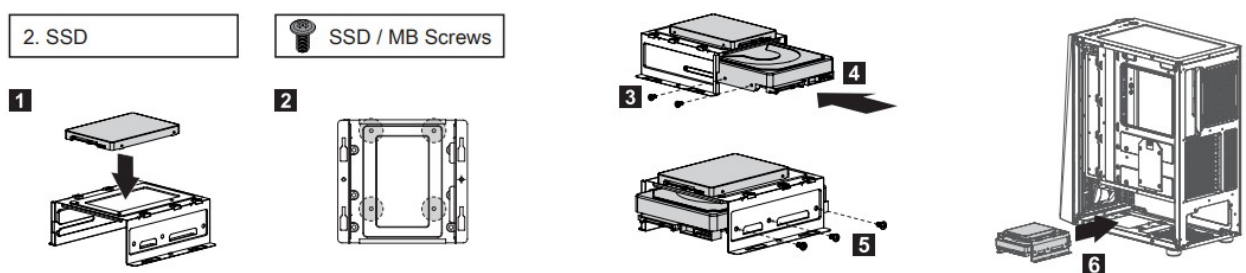
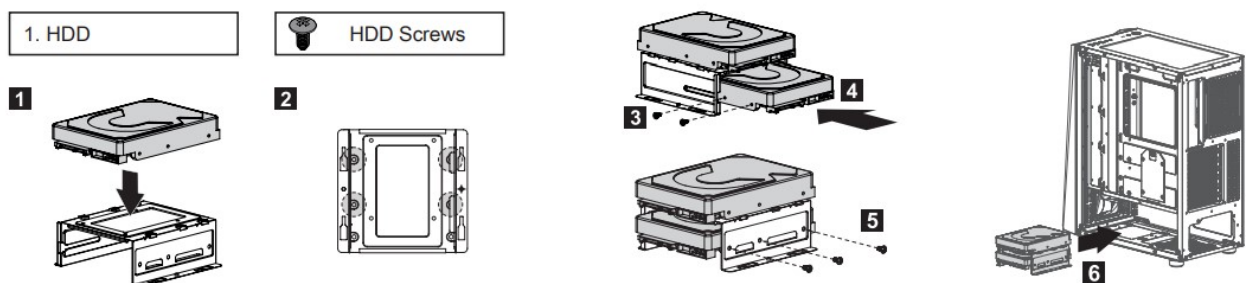
Mounting the PSU



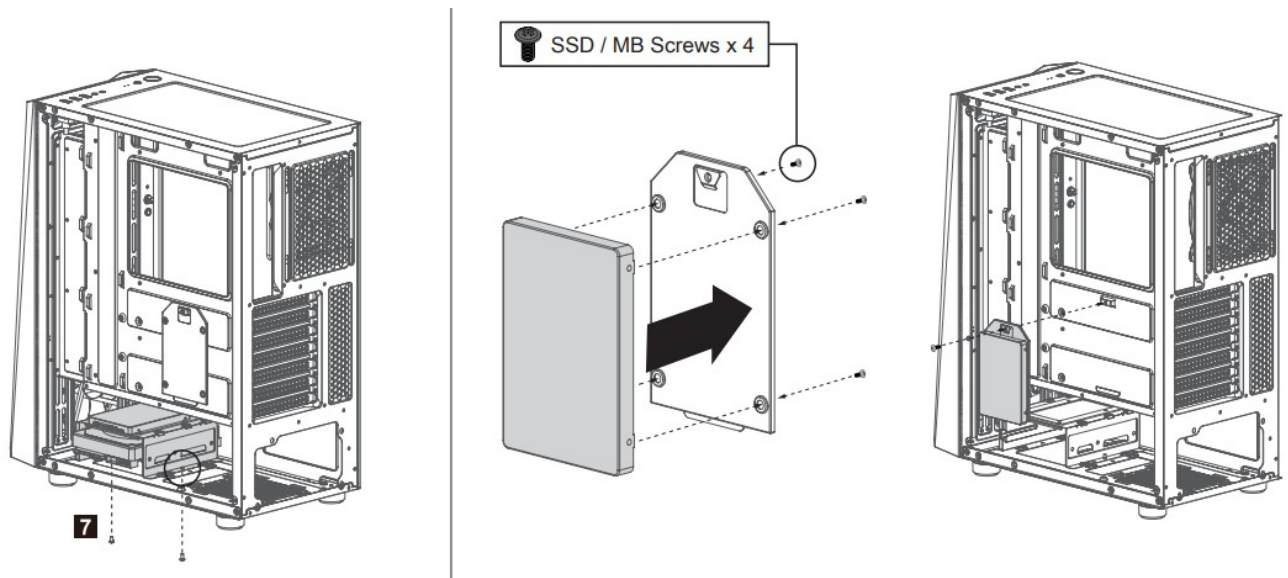
Mounting the PCI-E(VGA) card



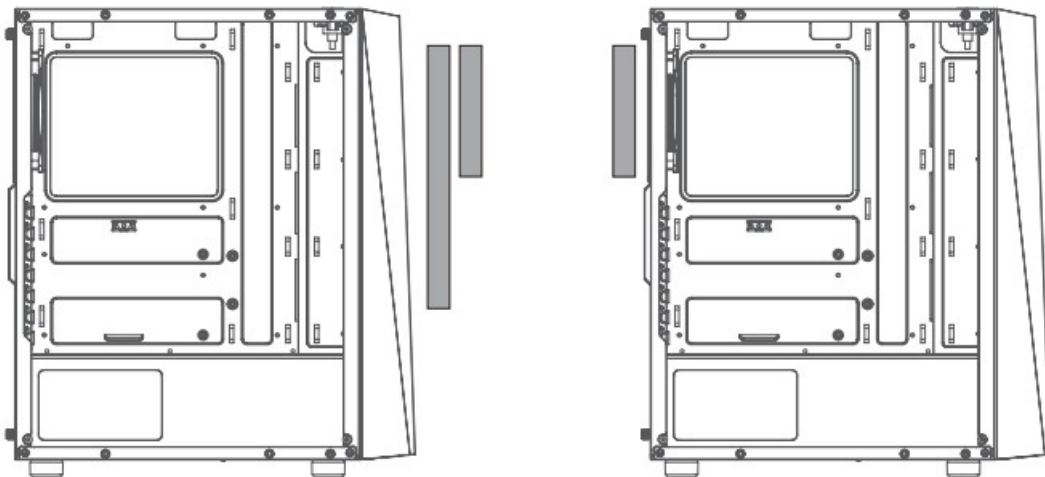
Mounting the 3.5" and 2.5" SSD / HDD



Mounting the 2.5" SSD / HDD

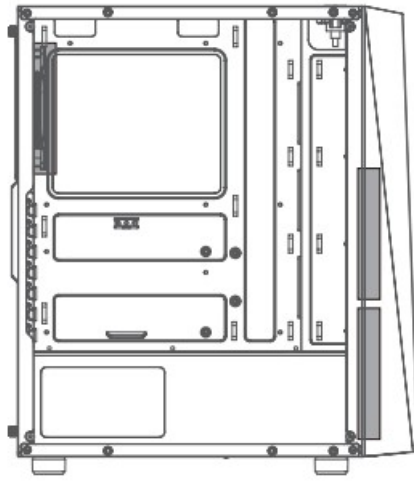


Mounting the radiator



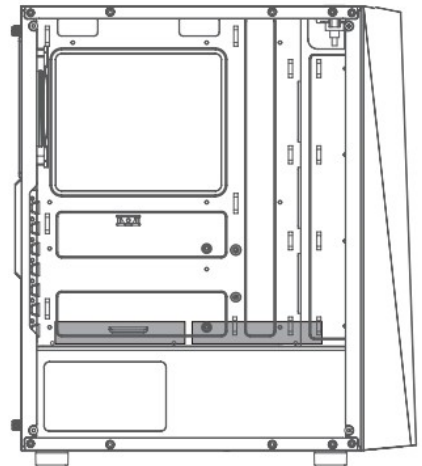
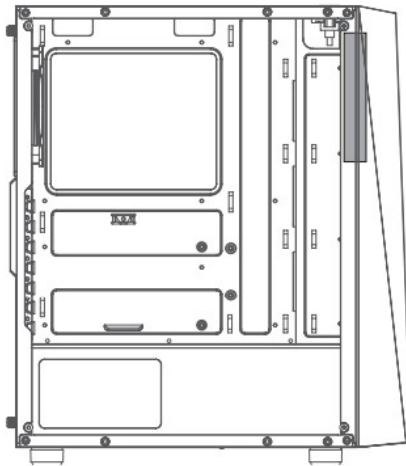
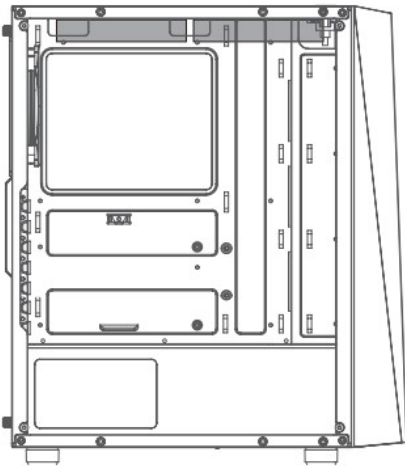
1. Mounting the front radiator Radiator 120mm / 240mm
2. Mounting the rear radiator Radiator 120mm

Pre-installed fan(s)



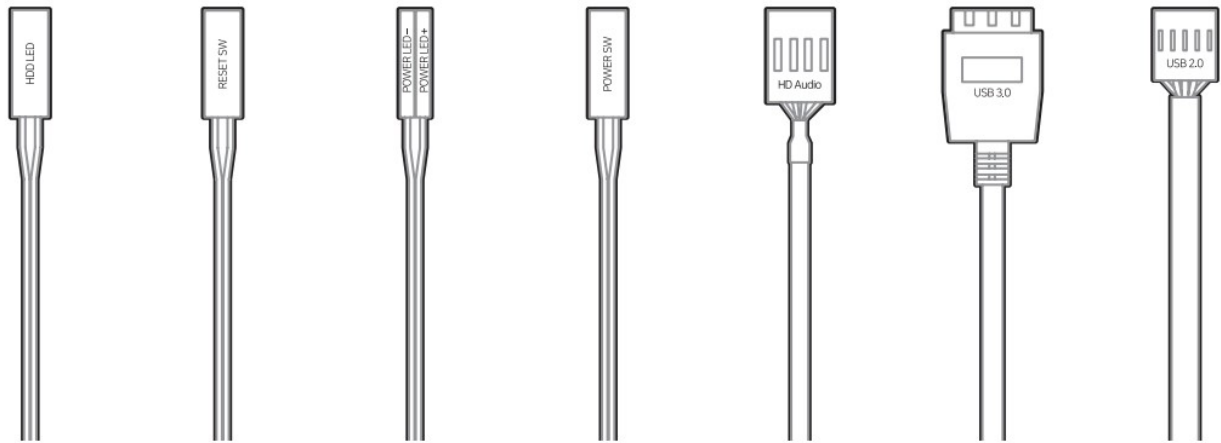
- Pre-Installed rear 120mm RGB fan
- Pre-Installed front 2 x 120mm RGB fan

Mounting the fans



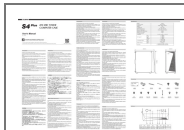
1. Mounting the top fans
2. Mounting the front fans
3. Mounting the bottom fans

I/O Connectors



- HDD LED
- Reset
- Power LED
- Power
- HD Audio
- USB 3.0
- USB 2.0

Documents / Resources



[ZALMAN S4 Plus ATC MID Tower Computer Case](#) [pdf] User Manual
S4 Plus, ATC MID Tower Computer Case, S4 Plus ATC MID Tower Computer Case, Tower Computer Case, Computer Case, Case

References

- zalman.com