



ZALMAN N2 ATX Mid Tower Computer Case User Manual

[Home](#) » [ZALMAN](#) » ZALMAN N2 ATX Mid Tower Computer Case User Manual 

Contents

- [1 ZALMAN N2 ATX Mid Tower Computer Case User Manual](#)
- [2 Precautions](#)
- [3 Components](#)
- [4 Top I/O Ports](#)
- [5 Warranty](#)
- [6 Read More About This Manual & Download PDF:](#)
- [7 Documents / Resources](#)
 - [7.1 References](#)
- [8 Related Posts](#)

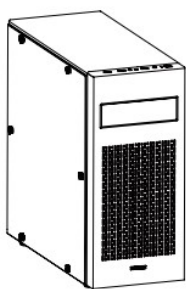
ZALMAN N2 ATX Mid Tower Computer Case User Manual



Precautions

- Please read this manual thoroughly prior to installation.
- Before installation, check the components and condition of the product and if any problem is found, contact the retailer.
- Avoid inserting objects or hands into the system while it is in operation to prevent product damage and injuries.
- Check the manual when connecting cables. Incorrect connections may cause short circuits leading to fire hazards.
- Do not block the front intake vent or the rear exhaust vent.
- Keep this unit away from heat sources, direct sunlight, water, oil, and humid environments, and place the unit on a flat, stable, vibration-free, and well-ventilated area.
- Do not clean the product surface with chemicals or wet cloth. (Chemicals: industrial brightener, wax, benzene, alcohol, paint thinner, mosquito repellent, aromatics, lubricant, detergent etc.)
- Please wear gloves while handling this product to prevent injuries.
- Product design and specifications may be revised to improve quality and performance.

Components



Main Unit



Stand-Off × 3



Bolt A × 6



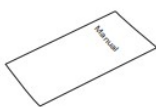
Bolt B × 18



Bolt C × 8



HDD Guide Set × 2

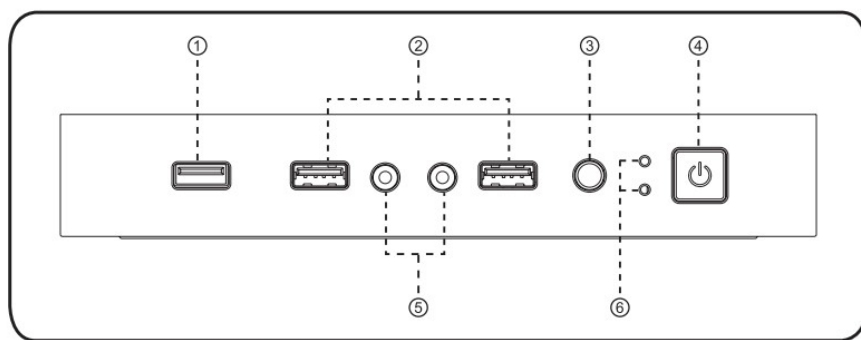


User's Manual



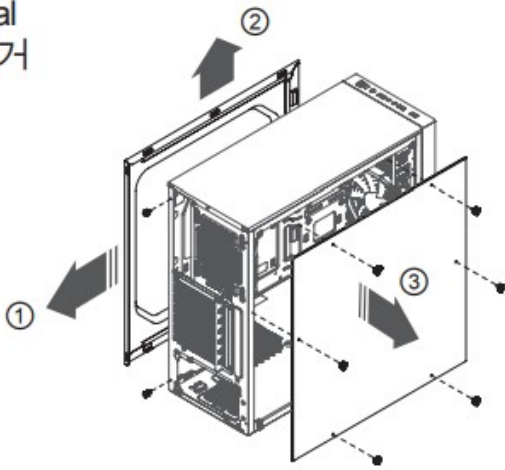
Cable Tie × 4

Top I/O Ports



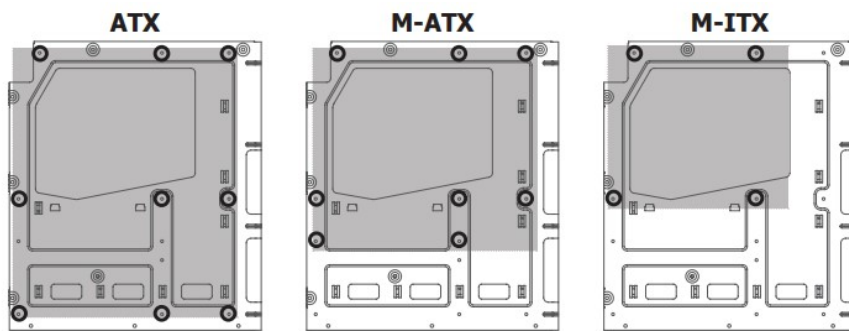
#	Part	#	Part
①	USB 3.0 Port	④	Power Button
②	USB 2.0 Port	⑤	Mic & Headphones
③	Reset Button	⑥	Power LED& HDD LED

1. Side Panel Removal



2. Motherboard Installation

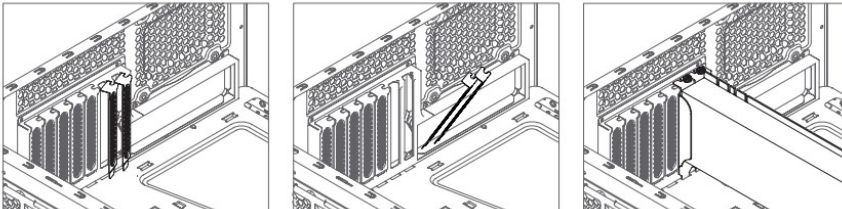
There are 6 Stand-offs preinstalled. Please follow the diagrams for additional Stand-off based on the Mother Board



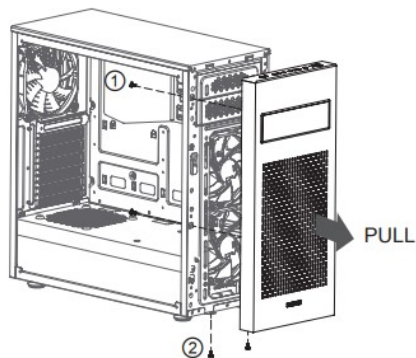
3. Graphic Card Installation

Remove the PCI Slot Cover

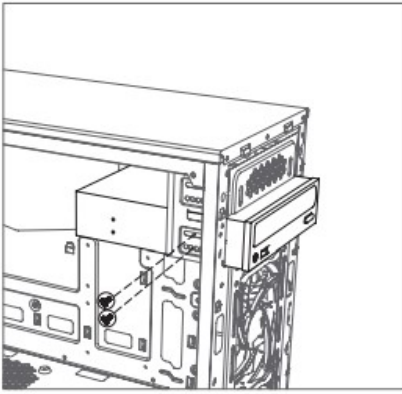
Install the VGA Card and fasten with a fixing screw.



4. 5.25" Device installation



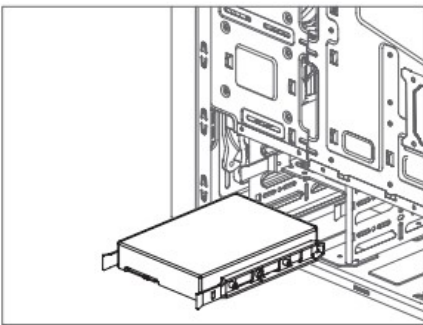
5. 5.25" Device installation



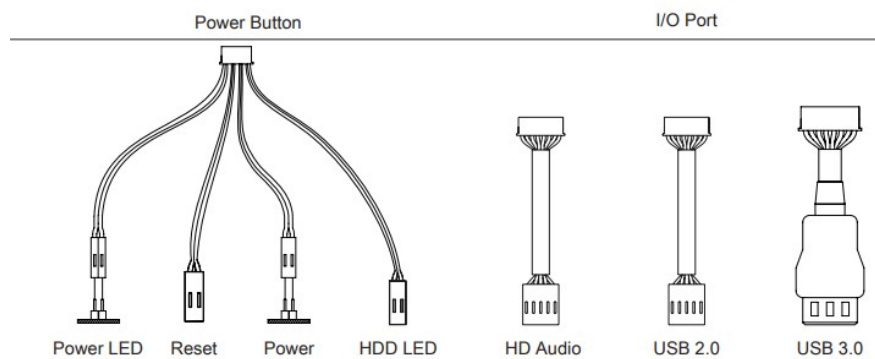
6. 3.5" HDD Installation



Install the HDD at the cage

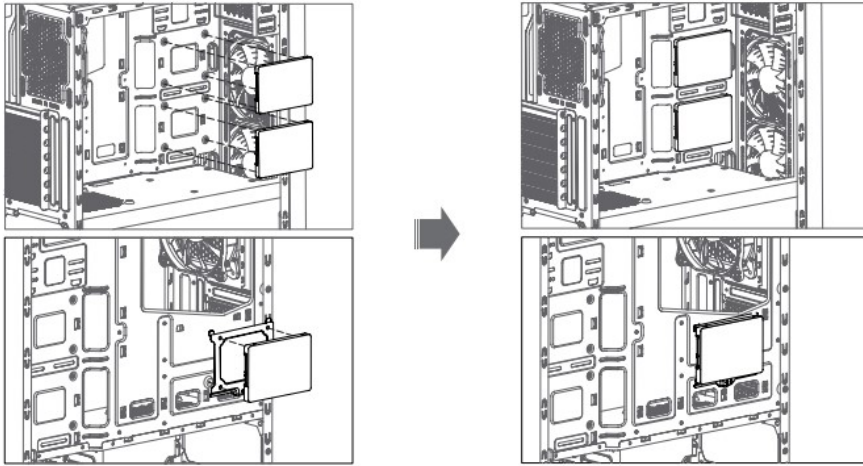


When transporting an assembled system, please secure the HDD with Bolt



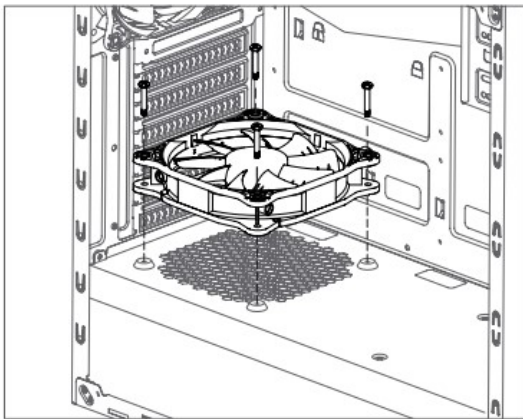
7 .2.5" HDD,SSD Optional

2.5" HDDs or SSDs can be installed on the right side of the chsasis as shown in the drawing below



8. How to Install the case fan

As shown in the picture, case fan can be mounted to the top of the PSU cover.



Warranty

Zalman Tech products come with the following limited warranties:

- 1 Year Warranty CPU coolers (All CNPS series, Reserator 3 Max series), computer cases, keyboards, mice, laptop coolers, case fans, hardware enclosures (including VE series), audio devices, and all other accessories not specified below.
- 3 Year Warranty GVM Series Power Supply Units
- 7 Year Warranty ARX, EBT series Power Supply Units Zalman USA has the right to change availability of limited warranty at its own discretion and any changes will not be retroactive.
- The limited warranty does not cover...

1. Non-Zalman brand products and accessories.
2. Problems resulted from external causes such as accident, abuse, misuse, and/or problems with electrical power.
3. Any service not authorized by Zalman USA.
4. Usage that is not in accordance with product instructions.
5. Failure to follow the product instructions and/or failure to perform preventive maintenance.
6. Problems caused by using accessories, parts, and/or components not supplied by Zalman.
7. Products with missing, altered Service Tags and/or serial numbers.

■ For United States and Canada

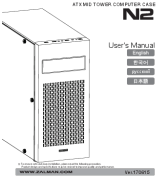
Technical support and warranty related inquiries: support.usa@zalmanusa.com

Toll free customer service: 1-888-925-6266

■ For all other regions Send e-mail to techsupport@zalman.co.kr For detailed warranty information, please visit www.zalman.com.

Read More About This Manual & Download PDF:

Documents / Resources

	<p>ZALMAN N2 ATX Mid Tower Computer Case [pdf] User Manual N2 ATX Mid Tower Computer Case, N2, ATX Mid Tower Computer Case, Computer Case, Tower Computer Case, Mid Computer Case, ATX, ATX Computer Case</p>
---	--

References

- zalman.com
- ANDPRO.RU - интернет магазин компьютерной и офисной техники с выгодными ценами и доставкой