



YZQ P3 Video WiFi Projector User Manual

[Home](#) » [YZQ](#) » YZQ P3 Video WiFi Projector User Manual 

Contents

- 1 YZQ P3 Video WiFi Projector
- 2 Product Information
- 3 Package List
- 4 Interfaces/Buttons
- 5 Usage Instructions
- 6 Connection Instruction
 - 6.1 iOS Screen Mirroring
 - 6.2 Android Screen Mirroring
- 7 Multi Interfaces
- 8 Projection Distance
- 9 Specification
- 10 Attention
- 11 Troubleshooting
- 12 Documents / Resources
- 13 Related Posts

YZQ

YZQ P3 Video WiFi Projector



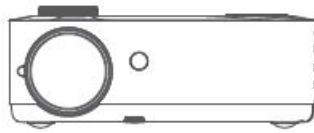
Product Information

Video WiFi Projector

The Video WiFi Projector is a versatile device that allows you to project videos, music, and images onto a wall or screen, providing an immersive viewing experience. This projector comes with a variety of interfaces, including USB, HDMI, AV, and TF cards, allowing you to connect to different devices easily. It also has a quick start feature that makes it easy to set up and use. Moreover, this projector features built-in WiFi connectivity, making it easy to stream content from your mobile device or laptop.

Package List

1. Video WiFi Projector
2. Remote Control
3. User Manual
4. HDMI Cable
5. 3 in 1 AV Cable
6. Power Cable



1 Video Projector



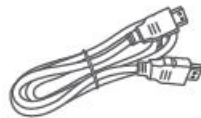
2 Remote Control



3 User Manual



4 3 in 1 AV Cable



5 HDMI Cable

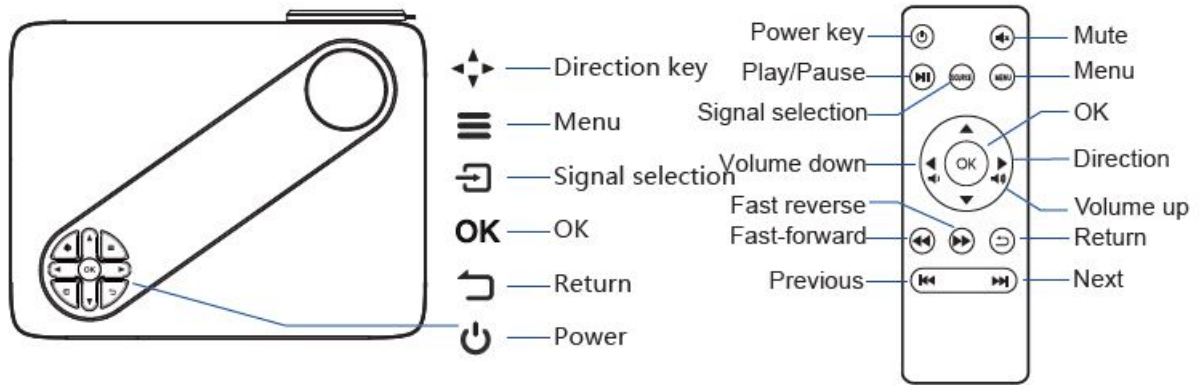


6 Power Cable

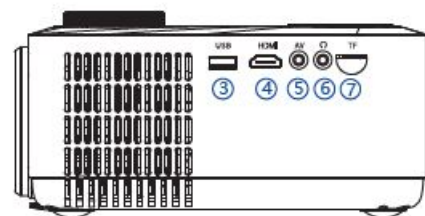
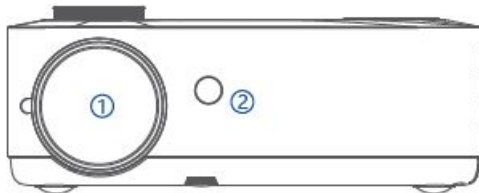
Interfaces/Buttons

The projector has various interfaces and buttons, including:

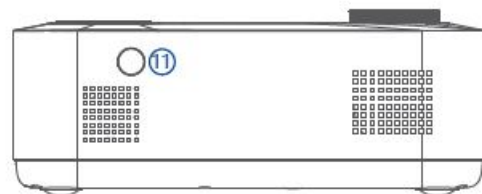
- Power key
- Direction key Play/Pause
- Menu
- Signal selection
- Volume down/up
- Fast reverse/forward
- OK
- Return/Previous/Next
- Mute
- Focus Wheel
- IR Receiver
- USB/HDMI/AV/Audio/TF Card Ports
- Electronic Keystone Adjust



1. Lens
2. IR Receiver
3. USB
4. HDMI
5. AV
6. Audio
7. TF Card

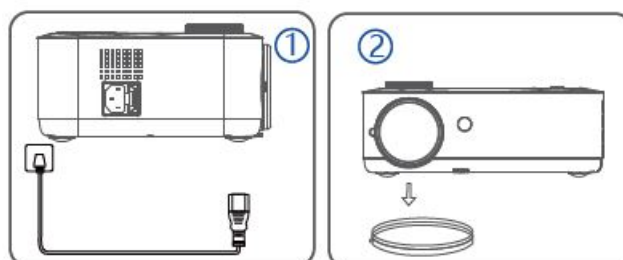


8. Focus Wheel
9. Power Port
10. IR Receiver

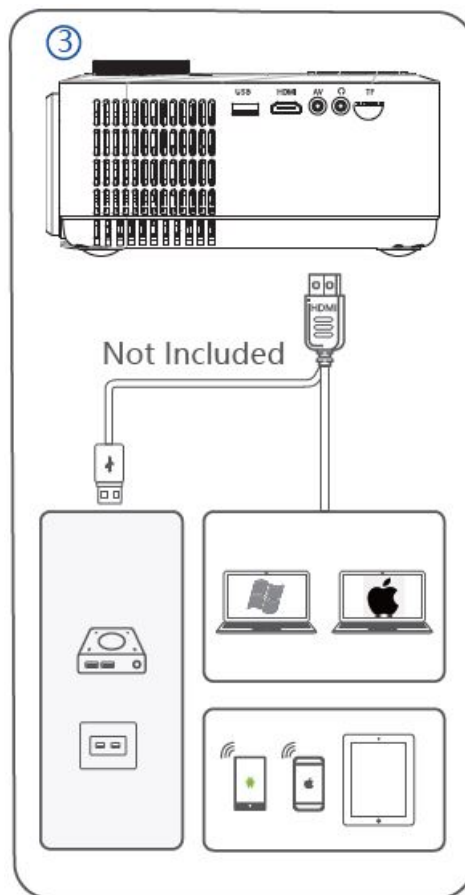


Usage Instructions

1. Plug the power cable into the outlet, then plug it into the machine.
2. Remove the lens cover.



3. Connect your device to the projector with the correct adapter/cable.



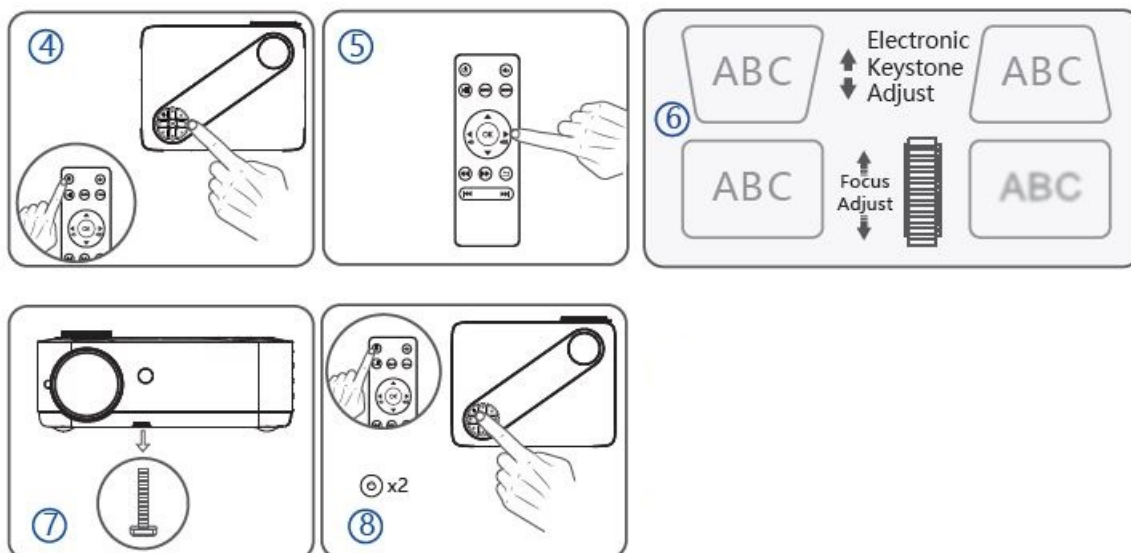
4. Press the power button to light it on.

5. Choose your videos/music/images to play.

6. Adjust the focus wheel to get a clear image. And go to the menu to adjust the 4D Keystone to get a rectangular image.

7. Adjust the knob bracket to get the best height as needed.

8. Press the power button twice to turn it off.



Connection Instruction

iOS Screen Mirroring

Streaming with router's WiFi (Support 5G)

1. Go to Homepage >Settings > WIFI Setting, turn on the WiFi switch and connect the projector to your router's WiFi signal.
2. Connect your iOS device to the same Wi-Fi signal.
3. Go to Homepage > iOS Cast to enter the interface of Screen Mirroring for iOS System.
4. Activate Screen Mirroring on your iOS device and select PROJECTOR-XXXXXX from the search list.
5. The display of your iOS device will be projected to the wall/screen.

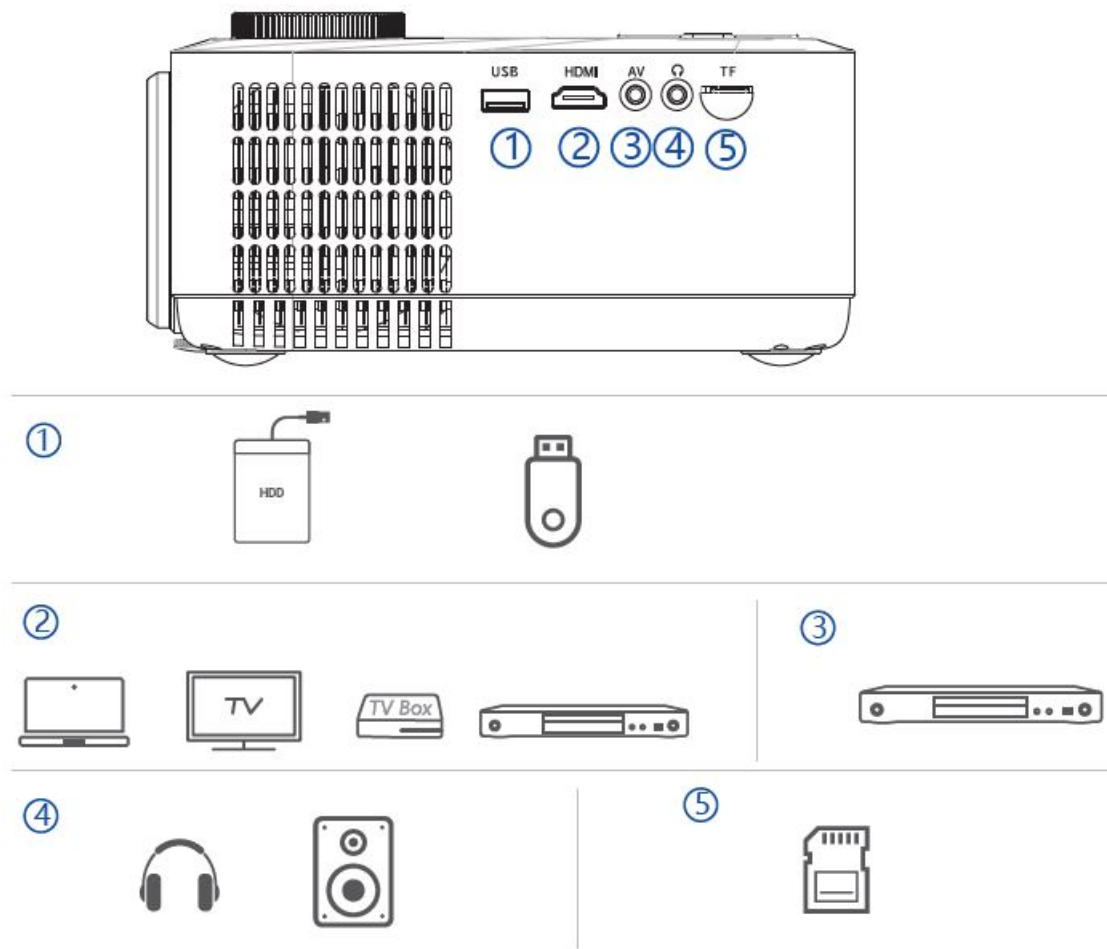
Android Screen Mirroring

Note:

To activate this function, please make sure your Android device supports Multi-screen/Wireless display/Smart View. Name may vary by different phone manufacturers.

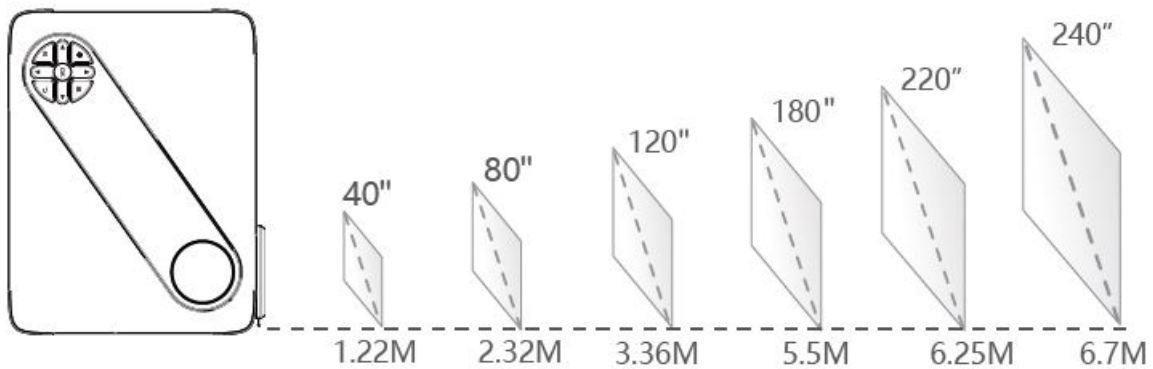
1. Go to Homepage >Miracast to enter the interface of Screen Mirroring for Android System.
2. Enable Multi-screen/Wireless display/Smart View on your Android device.
3. Select PROJECTOR-XXXXXX from the search list.
4. The display of your iOS device will be projected to the wall/screen.

Multi Interfaces



Projection Distance

The projection distance ranges from 40 to 240 inches, with the optimum projection distance being 120 inches.



Specification

- **Input:** USB/HDMI/AV/Audio/TF Card
- **Resolution:** 1280 x 720p
- **Brightness:** 2000 lumens
- **Contrast Ratio:** 1000:1
- **Aspect Ratio:** 16:9 or 4:3
- **Projection Distance:** 40 – 240 inches
- **Power Consumption:** 50W

Display Technology	Light Source	Native Resolution	Support Resolution
LCD	LED	1920 x 1080	576i 576P 720i 720P 1080i 1080P

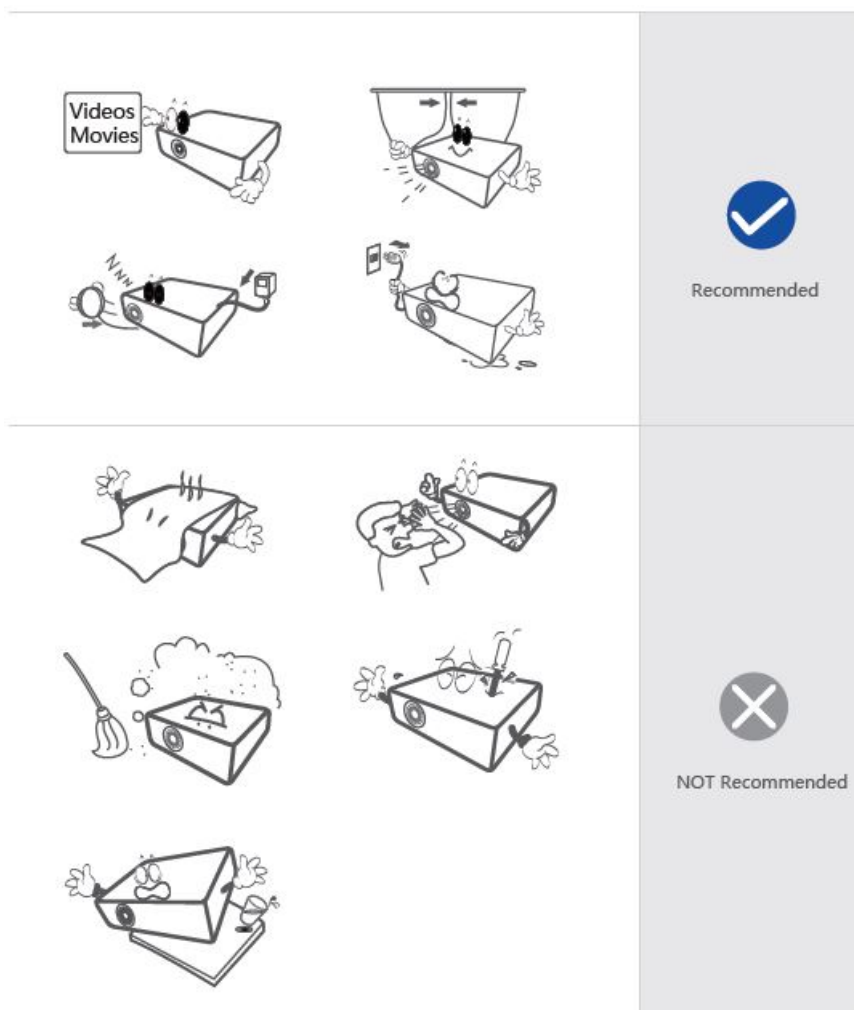
Project Distance	Project Size	Focus Adjust	Aspet Ratio
1.22-6.7M	40"-240"	Manual	4:3/16:9/auto

Speakers	Electronic Keystone	Product Size	Setup Type
3W/4Ω	±50	260*200*90mm	Front/Rear/Ceiling

Input Voltage	Product Weight	Supported Video Formats	Support Image Formats
AC100-240V	1.67kg	AVI/MP4/MKV/MOV/ RM VB/3GP/WMV/ VOB/DAT/ MPG/FLV	BMP/JPG/JPEG PNG/GIF

Input	Supported Audio Formats	BT Support	
HDMI*1/USB*1 Audio Out*1/AV IN*1 TF Card Slot*1	MP2/MP3/WMV/ OGG/A AC/FLAC	For sound transmission (8m)	

Attention



Troubleshooting

1. Connect to iPhone

- **Screen Mirror:** Choose the [iOS Cast] input source, you can connect your iPhone to the projector Wireless or Wired by following the steps.
- **HDMI Connect:** Use an Apple Lightning Digital AV Adapter (not included) to connect them via HDMI port.

2. The image is blurry

- Adjust the keystone to a rectangle first(Electronic Keystone Correction on the menu).
- Adjust the focus wheel to get clear(Manual Correction).
- Make sure the projector and wall/screen are within effective distance.

3. The remote can't work

- The remote control is aimed at the IR receiver on the machine.
- Do not block the IR receiver.
- Replacement battery.


4. Flip the projection image

- Change the projection image mode on the menu to fit your need.

5. Connect to Bluetooth speaker

- Go to Settings – Bluetooth – Switch On.
- Search Bluetooth – Choose your Bluetooth speaker -paired successfully.

Documents / Resources

	YZQ P3 Video WiFi Projector [pdf] User Manual P3 Video WiFi Projector, P3, Video WiFi Projector, WiFi Projector, Projector
---	---