



Yuucio ST38 LED String Lights User Manual

[Home](#) » [Yuucio](#) » Yuucio ST38 LED String Lights User Manual 

Contents

- [1 Yuucio ST38 LED String Lights](#)
- [2 Product Information](#)
- [3 Product Specifications](#)
- [4 Product Usage Instructions](#)
- [5 PACKAGE CONTENTS](#)
- [6 SPECIFICATIONS](#)
- [7 INSTALLATION](#)
- [8 CAUTIONS & WARNINGS](#)
- [9 DISPOSAL](#)
- [10 Documents / Resources](#)
 - [10.1 References](#)
- [11 Related Posts](#)

Yuucio

Yuucio ST38 LED String Lights



Product Information

The ST38 LED String Lights are manufactured by Shenzhen CMS Photoelectric Technology and Science Co., Ltd. These string lights are designed for outdoor use and come with various length options and bulb quantities. The lights have an IP44 rating, making them resistant to water splashes and suitable for outdoor environments. The light bulbs are dimmable LED bulbs with a power rating of 1W per bulb and a luminous flux of 80LM per bulb. They emit a warm white light with a color temperature of 2700K. The lamp holders are E12 sockets, and the bulbs are made of plastic material.

Product Specifications

- **Length Options:** 25Ft, 50Ft, 60FT, 100Ft, 120FT, 150FT
- **Voltage:** AC220V-240V
- **Quantity of Bulbs:** Varies depending on the length option, with spare bulbs included

Product Usage Instructions

1. Take out the cable with the empty sockets and install it in your desired location, such as porch, deck, yard, garden, or pool area.
2. Screw the bulbs into the empty sockets one by one.
3. Connect the AC plug to the power source.
4. The bulbs will light up once connected to the power source.

Cautions & Warnings

- Do not repair, disassemble, or modify the product without approval.
- Avoid placing the product near any heat sources.

- Pull off the plug when the lights are not in use.
- Cut off the power before installing or replacing the bulbs.
- Handle the bulbs with care as they are made of glass.
- Keep the bulbs clean to maintain their appearance and glow.
- Avoid hanging anything heavy on the string lights as it may damage the light wire.
- Use a soft cloth to wipe the lamp body. Do not use volatile solvents.
- Do not leave the lights unattended or permanently turned on. Keep them away from children.

PACKAGE CONTENTS

- LED ST38 light bulb
- Spare bulbs
- Cable with Empty Sockets
- User Manual X 1

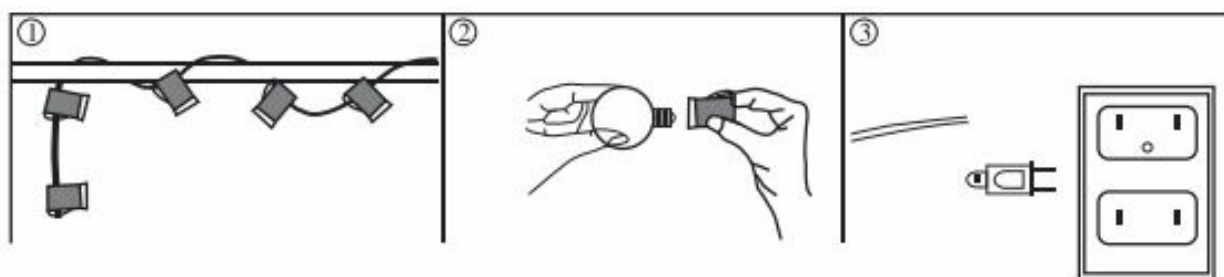
SPECIFICATIONS

Lamp Holder	E12
IP Rating	IP44
Dimmable	No
Light Source	LED
Lamp Materials	Plastic
Power	1W per bulb
Lumens	80LM per bulb
Color Temperature	warm white 2700K

Length	25Ft	50Ft	60FT
Model	CMC-O12XA	CMC-O25XA	CMC-O30XA
Voltage	AC220V-240V	AC220V-240V	AC220V-240V
Quantity Of Bulbs	12 bulbs + 1 spare bulb	25 bulbs + 1 spare bulb	30 bulbs+1 spare bulb

Length	100Ft	120FT	150FT
Model	CMC-O50XA	CMC-O60XA	CMC-O75XA
Voltage	AC220V-240V	AC220V-240V	AC220V-240V
Quantity Of Bulbs	50 bulbs + 2 spare bulb	60 bulbs+2 spare bulb	75 bulbs+2 spare bulb

INSTALLATION



1. Take out the cable with the empty sockets and install it on desired location such as porch, deck, yard, garden, or pool area and more.
2. Screw bulbs into empty sockets one by one.
3. Connect the AC plug to the power source and then the bulbs will light.

CAUTIONS & WARNINGS

1. Do not repair,disassemble or modify the product without approval.
2. Do not place the product near any heat sources.
3. Please pull off the plug when not in use.
4. Please cut off the power before installing the bulb.
5. The bulb is made of glass, so please be careful when you hanging it.
6. It is recommended to keep the bulbs clean. Extraneous matters on the surface of the bulb will affect the appears and glow of the product.
7. Please do not hang anything on the string lights as the weight may break the light wire and cause potential.
8. To prolong the service life,it's better to use soft co to wipe the lamp body. Do not use volatile solvent like
9. Although our lights are built with safety measures, w recommend leaving the lights unattended or turning them permanently.

Please keep it away from children.

DISPOSAL

CORRECT DISPOSAL OF THIS PRODUCT

(Waste Electrical& Electronic Equipment)

This Marking shown on the product or its literature, indicate that it should not be disposed with other household wastes at the end of its working life. To prevent possible harm to the environment or human health from uncontrolled waste disposal, please separate this from other types of wastes and recycle it responsibly to promote the sustainable reuse of material resources. Household user should contact either the retailer where they purchased this product, or their local government office, for details of where and how they can take this item for environmentally safe recycling. Business users should contact their supplier and check the terms and conditions of the purchase contract. This product should not be mixed with other commercial wastes for disposal.

Manufacturer

Shenzhen CMS Photoelectric technology and Science Co., Ltd

Address: 301, Building A, No.60 Chaoyang Road, Yanchuan Community, Yanluo Street, Baoan District, Shenzhen

You are responsible for returning all electrical and electronic devices used at collection points correspondents.

To know more: www.quefairedemesdechets.fr



Documents / Resources

	Yuucio ST38 LED String Lights [pdf] User Manual ST38 LED String Lights, ST38, LED String Lights, String Lights, Lights
--	---

References

-  [Info-tri | Ministères Écologie Énergie Territoires](#)

Manuals+.