



Yunwei Intelligent Technology R9 WiFi Visual Ear Picker User Manual

[Home](#) » [Yunwei Intelligent Technology](#) » Yunwei Intelligent Technology R9 WiFi Visual Ear Picker User Manual



Yunwei Intelligent Technology R9 WiFi Visual Ear Picker User Manual



Contents

- [1 Download the APP](#)
- [2 Connect process](#)
- [3 Product Parameters](#)
- [4 Attention](#)
- [5 Charging instructions](#)
- [6 Troubleshooting](#)
 - [6.1 The screen freezes](#)
 - [6.2 Wi-Fi signal cannot be transmitted/intermittent](#)
 - [6.3 No image display](#)
- [7 After-sale security card](#)
 - [7.1 Warranty Notice](#)
- [8 FCC Statement](#)
- [9 Documents / Resources](#)
- [10 Related Posts](#)

Download the APP

IOS users select IOS app store after scan the QR code, open App store to download and install.



Cooler

- IOS app store (The apple store)
- Android Google (Android abroad)
- Android China(Android domestic)

or Search for “Cooler” in App store directly

Cooler

- IOS app store (The apple store)
- Android Google (Android abroad)
- Android China(Android domestic)

Android users select Android China after scan the QR code, entering the next page, click: Download via a third -

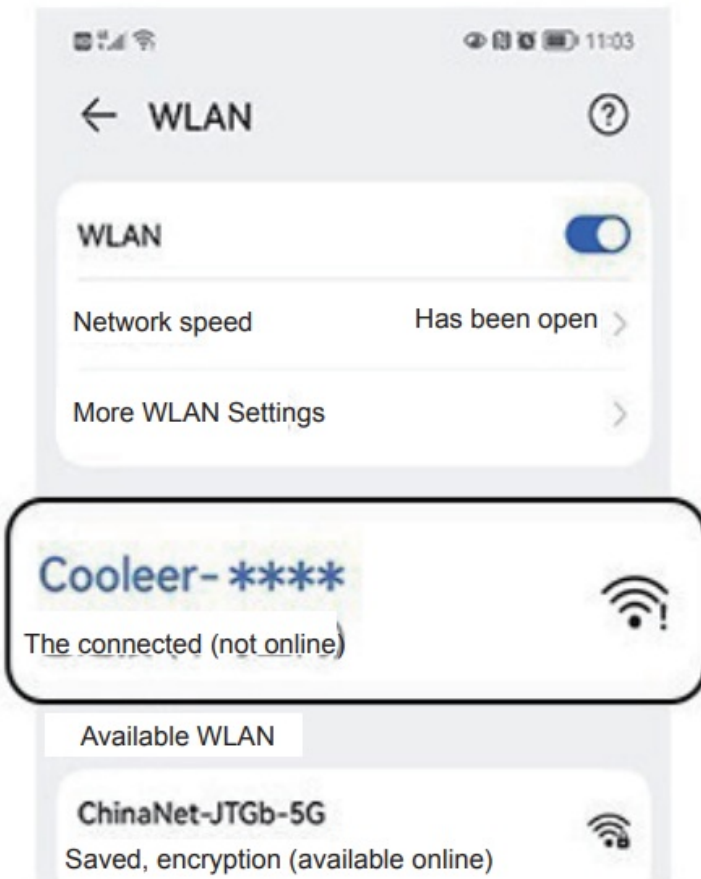
party browser” option, download and install.

Connect process

1. Ensure the product power is sufficient, press and hold the power button for 3 seconds to power on, then blue light will turn on .



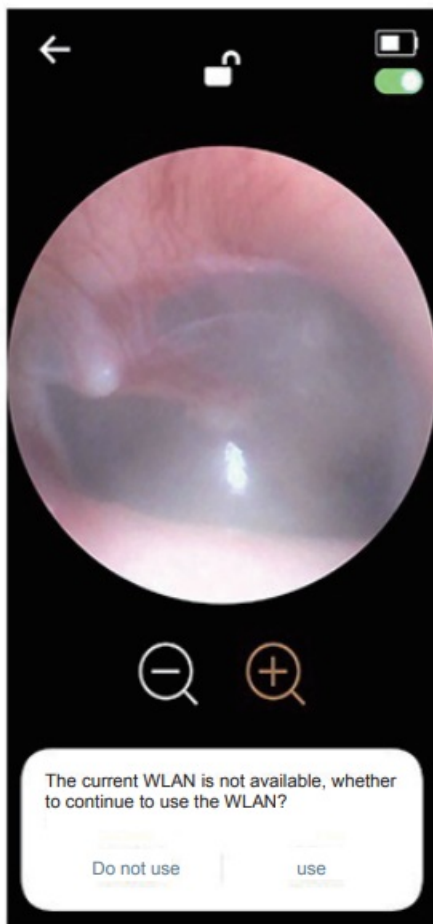
2. Open phone setting Wi-Fi function. Connect “Coulee r-**** ” hotspot.



3. Open APP and click “start” button, then start using the product.



4. If meet bellowing prompt, please don't switch WIFI, click use is ok.



Product Parameters

- **Product Name:** WiFi Visual Ear Picker
- **Model:** R9 Rod weight:13g
- **Image sensor:** CMOS
- **Battery capacity:** 350mAh
- **Battery life:** about 90 minutes/time
- **Input current:** DC5V 300mA
- **Lens Pixels:** Ultra HD Camera
- **Connect hotspot:** Cooleer-xxxx
- **Network standard:** IEEE 802.11b/g/n
- **Optimum focal length:** 1.2-1.6cm
- **Work frequency:** 2.4Ghz
- **Working temperature:** -5-40°C

Attention

1. When the image is not clear, use a cotton swab to wipe the lens
2. When cleaning the lens, please use a professional alcohol cotton swab and wipe it carefully
3. Please observe the surroundings before use, do not use it when someone is running to avoid impact
4. This product is not suitable for children under 5 years old
5. It is forbidden for children to use alone and must be guided by an adult
6. Please place the product out of the reach of children

7. Do not put the endoscope in liquid to avoid damage caused by water immersion
8. It is normal for the lens temperature rise slightly, please rest assured to use
9. This product is intended for personal care only and cannot be used as a medical device
10. Please place the product in a cool and dry place, away from fire sources and corrosive substances

Charging instructions

1. The charging, the indicator light is red
2. After a full charge, the light is put out
3. Please send the product after shutdown, recharging.

Troubleshooting

The screen freezes

- The data transmission distance is too far, and the product should not be too far away from the mobile phone when using it.
- Insufficient power will also cause lag, please charge in time.

Wi-Fi signal cannot be transmitted/intermittent

- The lower the battery capacity, the weaker the Wi-Fi signal. please charge full for battery before use.
- Beyond the Wi-Fi signal transmission distance, The device and the mobile phone should be placed together.
- There are too many Wi-Fi signals around, which will affect the signal of the product. Try to use it in an area with less Wi-Fi signal.
- Make sure your phone is connected to the product Wi-Fi

No image display

- confirm whether the mobile phone is connected to the product WIFI hotspot
- After confirming the connection, if there is no display, close the APP and re open the product APP.

After-sale security card

Warranty Notice

In accordance with the relevant provisions of the national quality supervision and inspection "three guarantees" service, the company provides you with high-quality service co moments in the case of non-human damage: 7-day return, 15-day replacement, and one-year warranty.

Man-made damage includes: apparent drop, scratch, peeling paint, chipping, water or other liquid damage. Using a charging interface with a voltage that is not standard will cause the machine to burnout. Unauthorized disassembly and damage. Accessories are not complete.

7 days return: From the date of receipt of the product, within 7 days of normal use, if there is a product quality problem, you can choose to return it (return the full set of products).

15-day replacement: From the date of receipt of the product, within the 8th to 15th day, under normal use, if there is a product quality problem, you can choose to return it or repair it.

After your replacement or repair, you are entitled to the warranty period calculated from the date of purchase of the original product.

One-year warranty: From the date of receipt of the product, we will provide you with free maintenance services if there is a quality problem under normal use within one year.

User Information:

user name:

Receiver address:

Seller:

Contact phone:

Contact phone:

FCC Statement

This equipment has been tested and found to comply with the limits for a Class B digital device, pursuant to part 15 of the FCC Rules. These limits are designed to provide reasonable protection against harmful interference in a residential installation. This equipment generates, uses and can radiate radio frequency energy and, if not installed and used in accordance with the instructions, may cause harmful interference to radio communications. However, there is no guarantee that interference will not occur in a particular installation. If this equipment does cause harmful interference to radio or television reception, which can be determined by turning the equipment off and on, the user is encouraged to try to correct the interference by one or more of the following measures:

- Reorient or relocate the receiving antenna.
- Increase the separation between the equipment and receiver.
- Connect the equipment into an outlet on a circuit different from that to which the receiver is connected.
- Consult the dealer or an experienced radio/TV technician for help.

Caution: Any changes or modifications to this device not explicitly approved by manufacturer could void your authority to operate this equipment.

This device complies with part 15 of the FCC Rules. Operation is subject to the following two conditions:

1. This device may not cause harmful interference, and
2. This device must accept any interference received, including interference that may cause undesired operation.

RF Exposure Information

The device has been evaluated to meet general RF exposure requirement. The device can be used in portable exposure condition without restriction.

Documents / Resources



[Yunwei Intelligent Technology R9 WiFi Visual Ear Picker](#) [pdf] User Manual
R9, 2A7SI-R9, 2A7SIR9, WiFi Visual Ear Picker, R9 WiFi Visual Ear Picker