



YUJIE RV Door Keyless Handle Lock User Manual

[Home](#) » [YUJIE](#) » YUJIE RV Door Keyless Handle Lock User Manual 

YUJIE

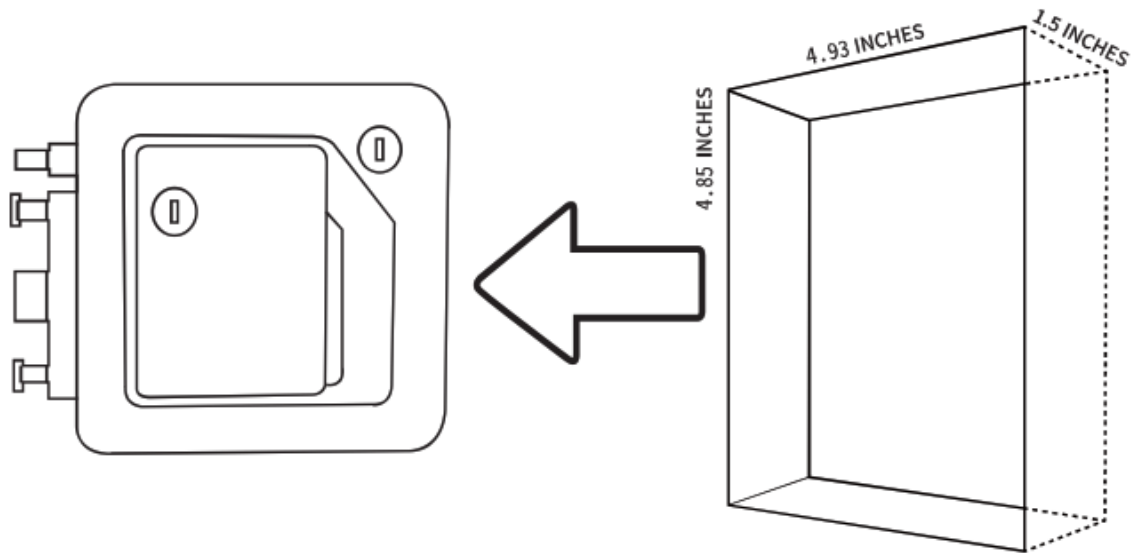
RV DOOR KEYLESS HANDLE LOCK
User Manual



Contents

- [1 RV Door Lock Operation Instructions](#)
- [2 RV Door Lock – Battery Use and Replacement](#)
- [3 Documents / Resources](#)
- [4 Related Posts](#)

RV Door Lock Operation Instructions



Replace your common handle with a new
RV Door Keyless Handle Lock

The opening for your common handle will measure approximately 4.85 inches tall x 4.93 inches wide x 1.5 inches deep

Remove the Existing Handle

1. Securely latch your RV door in the open position.



2. Remove the 4 screws from the back of the existing handle(see Fig.1).

Fig.2



3. Remove the 2 screws and the strike plate from the side of the door (Fig.2)-you will now be able to remove the front portion of the handle (Fig.3).



Fig.3

At this point you are ready to install and program your new RV Door keyless Handle Lock.

Installing the new Keyless Handle

1. Carefully remove your new RV Lock from its packaging and place all the parts on a flat,non-abrasive surface.
2. Remove the 2 screws holding the battery cover and install the 4 AA alkaline batteries . (please consult the instructions section for installing the batteries on Pag 5).



Fig.4

3. Slide the Front Handle of your new RV Door Lock into the opening on the front of the door (Fig.4), while carefully pulling the wires ahead of the lock and through the opening (Fig.5).

Fig.5



Then, hold the front handle in place so that it does not fall and attach the new strike plate with the 2 shorter screws on the door jamb side (Fig.6).

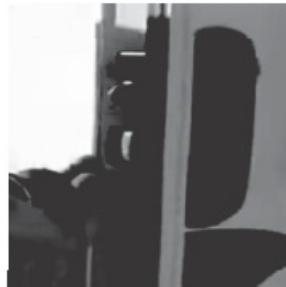


Fig.6

4. While holding the RV Door Lock's Back Handle, connect the battery wires to the Front Handle that is already in the door (Fig.7). A confirmation beep signifies that the connection is made.

Fig.7



NOTE: "ON/OFF" switch does NOT have to be in the ON position (This switch only turns on the ability to use the FOB/remote).

5. Carefully align and attach the back handle while gently tucking excess wires into the void area. Hold the paddle of the Back Handle closed while inserting the paddle tooth into the Front Handle housing .

NOTE: Make sure not to pinch or cut wires during installation.

6. Use a #2 Phillips screwdriver to install the 4 longer screws. For the moment, only tighten the screws tight enough to keep the lock securely against the door (Fig.8).



Fig.8

7. Adjust and straighten the Front Handle in the opening. Once straight, hold it in place while fully tighten the 4 longer screws of the Back Handle (be careful not to overtighten).
8. Type in the numeric code (default code is: "1234") and press the "LOCK" button. Your Handle should now be functioning correctly.

-If the keypad does not function correctly, press the "code reset" button (Fig9) on the Back Handle until you hear a long beep (approx. 5seconds). This will reset your keypad code to "1234",



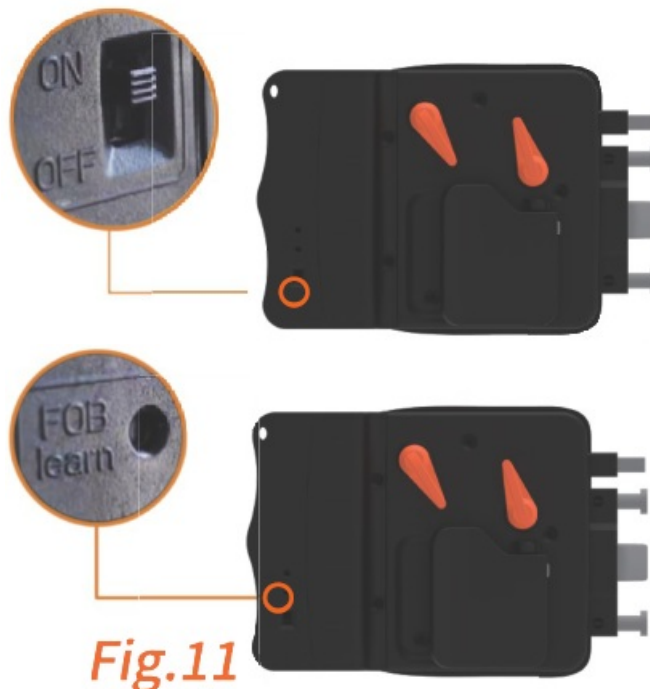
NOTE

- If the door is hard to shut or will not close tight, simply adjust the strike plate on the jamb side of the door.
- DO NOT place your mechanical keys inside your trailer. Keep them somewhere outside of the trailer, (like in a glove box) so they are available if you need them.

Program Your Fob/Remote

1. Turn the switch to "ON" at the back of your handle (Fig 10). Then press the "FOB Learn" button located just above the ON/OFF switch on the back of the handle (Fig 11). A short, quick beep will confirm that you entered the programming mode.

Fig.10



2. Now press the LOCK button on your REMOTE (Fig 12) until the handle confirms a sync with a long beep (may take 2 to 3 clicks).
3. Finally, press the LOCK/UNLOCK remote button to confirm the actuation of the deadbolt on your RV Door Handle Lock.

NOTE:

- If remote programming did not work or if you have additional remotes to program, simply repeat steps #1,#2, and #3.

- You must hold the remote buttons down for a couple of seconds to actuate the handle, this is a safety feature against accidental pushes.



Fig.12

Program Your Keypad



1. Write down your desired “new” code below.
(we recommend 4 to 8 digits)
 2. Press the “8” key for 2 seconds and then while still keeping the “8” m; key pressed, also press the “ LOCK” key, then release both. A confirmed motion beep signifies that you have entered the programming mode. 37
Note: DO NOT press both “8” and “LOCK” keys in the same time from start.
 3. Type in the existing code (default code is: “1234”) and then press the “LOCK” button. UNLOCK button
 4. Now type in the new code, then press the “LOCK” button.
 5. Type in the same new code again and press” LOCK”.
A confirmation beep confirms your new programming.
 6. To ensure your new code is working type in the new code and press the lock or unlock button.
The keypad should confirm the accepted code by actuating the deadbolt.
- Be sure to press “code reset” button (on the back of the handle) at the beginning of EACH ATTEMPT to program the new code. Just keep it pressed until the confirmation beep is heard and start again at step #1.
 - The keypad will time out after 7 seconds of being idle. If you make a mistake simply press “code reset” and start over at step#1.

- We recommend programming the new code in a quiet environment so that the confirmation beeps can be well heard.

RV Door Lock – Battery Use and Replacement

Program Your Fob/Remote

Remove the 2 screws holding the battery cover on the back of the Handle (Fig 13) and install 4 AA alkaline batteries (Fig 14).

A beep will confirm that the handle has power.

Fig.13



Fig.14



NOTE:

- When replacing the batteries, install high-quality and fully charged alkaline batteries.
- When you swipe your IC Card or use the remote control, there will be three long beeps means the batteries are low. Fig.14 .
- Changing the batteries on your Handle will not change the “8 wy | current IC Card or remote FOB programming.
- save battery life and avoid hanle damage, remove the batteries in the handle when you are not in travel season.

This device complies with Part 15 of the FCC Rules. Operation is subject to the following two conditions:

1. this device may not cause harmful interference, and

2. this device must accept any interference received, including interference that may cause undesired operation


NOTE: This equipment has been tested and found to comply with the limits for a Class B digital device, pursuant to Part 15 of the FCC Rules. These limits are designed to provide reasonable protection against harmful interference in a residential installation. This equipment generates, uses, and can radiate radio frequency energy and, if not installed and used in accordance with the instructions, may cause harmful interference to radio communications. However, there is no guarantee that interference will not occur in a particular installation.

If this equipment does cause harmful interference to radio or television reception, which can be determined by turning the equipment off and on, the user is encouraged to try to correct the interference by one or more of the following measures:

- Reorient or relocate the receiving antenna.
- Increase the separation between the equipment and receiver.
- Connect the equipment into an outlet on a circuit different from that to which the receiver is connected. — Consult the dealer or an experienced radio/TV technician for help.

Warning: changes or modifications not expressly approved by the party responsible for compliance could void the user's authority to operate the equipment

Documents / Resources

	<p>YUJIE RV Door Keyless Handle Lock [pdf] User Manual YJ-FCS-G01, YJFCSG01, 2AY54-YJ-FCS-G01, 2AY54YJFCSG01, RV Door Keyless Handle Lock, RV Door, Keyless Handle Lock</p>
--	---