



Yucvision TP-MPND5MV2 360X Zoom Ip Camera User Guide

[Home](#) » [Yucvision](#) » Yucvision TP-MPND5MV2 360X Zoom Ip Camera User Guide 

yucvision

360X ZOOM IP CAMERA MANUAL



Contents

- [1 Add the camera to the mobile app](#)
- [2 Using the camera on a computer](#)
- [3 Camera Hardware Interface Description](#)
- [4 Documents / Resources](#)
 - [4.1 References](#)

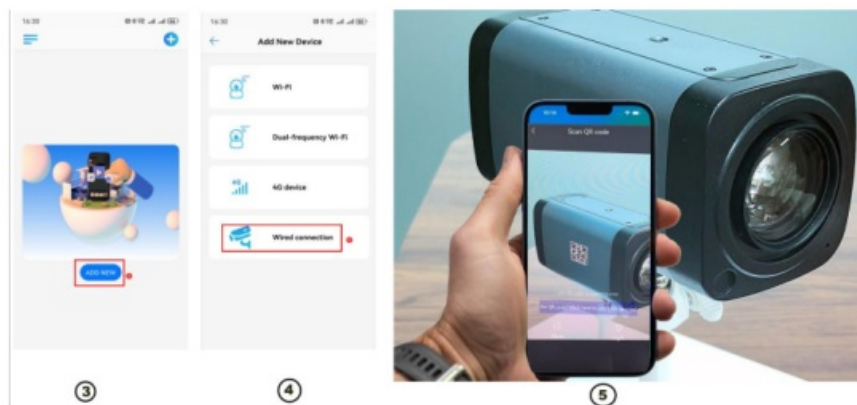
Add the camera to the mobile app

1. Scan the QR code in Figure 1 to download a mobile app called videolink and install it on your phone.

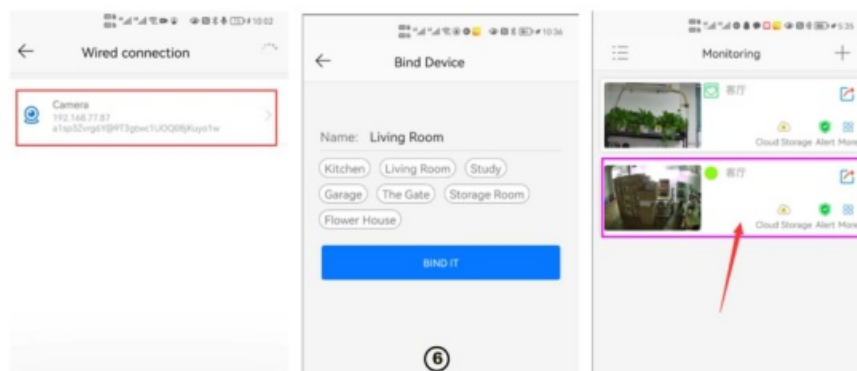


<http://www.yucvision.com/videolink-Download.html>

2. Remove the product from the packaging box and insert an Ethernet cable that supports POE. After connection, the network data indicator light will flash continuously, indicating that the camera is starting to start. After waiting for the startup to complete (approximately 30 seconds of startup time), as shown in Figure 2
3. Start the videolink app on your phone, register an account (using an email address), then log in to the account and click on add camera, as shown in Figures 3 and 4:



4. Align the phone camera with the QR code on the camera, and the phone will automatically scan the QR code to complete the addition of the camera, as shown in Figure 5.
5. Complete the camera addition, as shown in Figure 6.



Using the camera on a computer

Download all software: <http://www.yucvision.com/videolink-Download.html>

1. Install search tool on your PC(http://www.esunstar.net/upload/file/AjDevTools_V5.8.7_20240830.exe)
1,Run" AjDevTools_V5.8.7_20240830.exe" and complete the installation

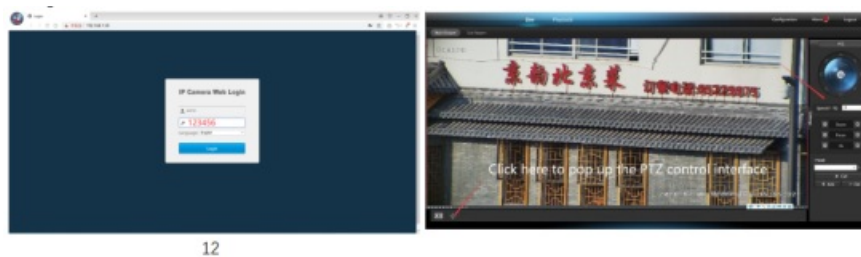


2. Run the software, as shown below 10



3. Here you can modify the IP address of the camera, upgrade the firmware and other parameter settings. Right-click on the IP address to open the camera with a browser, as shown in the figure 11.

4. Enter the browser login interface, login user name: admin, password: 123456, as shown in the following figure (if the browser prompts you to download and install the plug-in, please download and install it): Then click login as shown in the figure 12



[2], Use PC software to search and add cameras([http://www.yucvision.com/upload/file/LMS_install_v5.0.9_20220923\(KP\).exe](http://www.yucvision.com/upload/file/LMS_install_v5.0.9_20220923(KP).exe))

1. Install the LMS computer software.



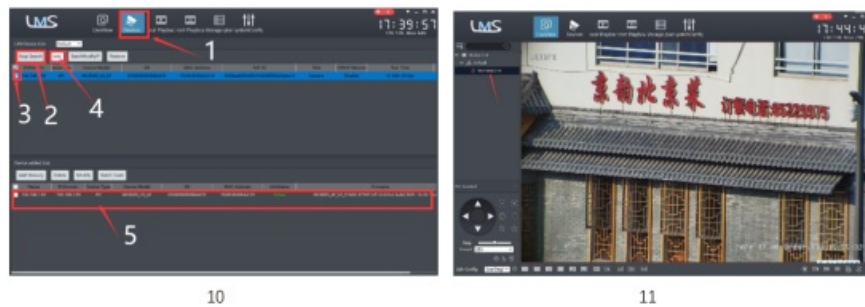
The software supports English, Simplified Chinese and Traditional Chinese (if you want to support other languages, we can provide you with language packs, you can translate into the language you want, and then we can provide you with software customization)

2. Follow the prompts to complete the software installation

3. Run the LMS software:user:admin,password:123456



Click LOGIN to log in to the software



4. Search and add cameras. Click "Devices" > "Start Search" > click "3" > add > successfully added as shown in the figure 10. Then click "Liveview" to go to Liveview, as shown in the figure 11. Double click on the IP address and the video will automatically appear in the video box on the right.

[3], Preview and control cameras with videolink PC software

1. Double-click the Videolink PC software in the directory, follow the prompts to complete the installation of the camera, and then run the camera.

http://www.yucvision.com/upload/file/Videolink_install_V2.0.0_20230613.exe

2. run and login Videolink,

The username and password here are the account you registered for the first time on your mobile phone.

Click login button go to Videolink

You will see all the cameras under your account, you can preview the cameras and view the video playback in this way



Camera Hardware Interface Description



This camera can directly control the Zoom function of the camera on the control panel. As shown in the above figure.

1. When the camera is connected to the LAN port through an Ethernet cable, the DC12V port can provide 12V power to other devices.
2. If you have not used POE to power the camera, you can still use an independent 12V power supply to power the camera.
3. RS485 port provides a PT control protocol, protocol name: PELCO-D, baud rate: 9600, address code: 1
4. Alarm interface:
When the Alarm+and Alarm – are short circuited, an alarm input will be triggered. The camera supports alarm recording, alarm photography, and also supports alarm linkage preset positions.
When the camera triggers an alarm, the alarm output port will output a switch signal (built-in relay)
5. Line IN is the microphone input port, which can record sound by inserting a passive or active microphone.
AUDIO OUT is the speaker output, which requires an external active speaker to achieve intercom function.

Documents / Resources

	<p>Yucvision TP-MPND5MV2 360X Zoom Ip Camera [pdf] User Guide TP-MPND5MV2 360X Zoom Ip Camera, TP-MPND5MV2, 360X Zoom Ip Camera, Zoom Ip Camera, Ip Camera</p>
--	---

References

- [User Manual](#)

This website is an independent publication and is neither affiliated with nor endorsed by any of the trademark owners. The "Bluetooth®" word mark and logos are registered trademarks owned by Bluetooth SIG, Inc. The "Wi-Fi®" word mark and logos are registered trademarks owned by the Wi-Fi Alliance. Any use of these marks on this website does not imply any affiliation with or endorsement.