



YUCHENGTECH Portable Edge Banding Machine User Manual

[Home](#) » [YUCHENGTECH](#) » YUCHENGTECH Portable Edge Banding Machine User Manual 

Contents

- [1 YUCHENGTECH Portable Edge Banding Machine](#)
- [2 Specifications](#)
- [3 Product Usage Instructions](#)
- [4 Product Introduction](#)
- [5 Product Structure](#)
- [6 Panel Description](#)
- [7 Product Specification](#)
- [8 Product Features](#)
- [9 How to use](#)
- [10 Safety Guidelines](#)
- [11 Selection of edge-sealing hot melt adhesives](#)
- [12 The use of edge-sealing adhesives](#)
- [13 Maintenance](#)
- [14 Application](#)
- [15 Documents / Resources](#)
 - [15.1 References](#)



YUCHENGTECH Portable Edge Banding Machine



Specifications

- **Rated voltage:** 220V
- **Rated power:** 1200W
- **Glue capacity:** 1000 ml
- **Heating time:** 5 min to 10 min
- **Sealing side speed:** 2-6 m/min
- **Operating temperature:** 150-170°C
- **Edge banding width:** 10mm to 50mm
- **Continuous working time:** 10h or less
- **Edge thickness:** 0.3-3mm
- **Size:** 400 x 360 x 370 (mm)
- **Gluing method:** Double-sided gluing
- **Net weight:** 9.0 kg

Product Usage Instructions

Suitable Materials:

The machine is suitable for edge banding belts made of bendable melamine-impregnated paper, wood veneer, plastic, and other furniture edge banding materials. The gluing surface must be flat.

Coating Plastic Edge Banding Belts:

If using plastic edge banding belts, they must be coated with hot melt adhesive to prevent deformation when heated. The gluing surface of plastic edge banding belts must be pre-coated with back gluing (an activator that can bond the back of the edge banding belts with the hot melt adhesive).

Suitable Hot Melt Adhesives:

Use medium to low-temperature hot melt adhesives with a melting point of 120-170°C or less.

Suitable Work Piece Frame:

The machine can be used to glue hot melt wood, particle board, medium fiber board, particle board, and other plate frames.

Operation:

1. Place the workpiece on a stable surface.
2. Ensure the edge banding tape is within the width range of 10mm to 50mm.
3. Apply the hot melt adhesive to the gluing surface of the edge banding tape.
4. Align the edge banding tape with the edge of the workpiece and press firmly to ensure proper adhesion.
5. Use the speed regulator to adjust the machine speed according to the glue application and tape pressing needs.
6. Continue the edge banding process, ensuring the sealing side speed is within the range of 2-6 m/min.

Frequently Asked Questions

- **Q: Can I use this machine for straight line and arc irregular border sealing?**

A: Yes, this machine can be directly applied to both straight-line and arc irregular border sealing operations.

- **Q: Is this machine portable?**

A: Yes, this machine is portable and can be converted to different workplaces. It is suitable for construction sites and the decoration industry.

- **Q: How does the glue pot design ensure sufficient glue melting capacity?**

A: The glue pot has an increased volume and significantly reduced pre-heating time, ensuring there is enough capacity for melting glue.

- **Q: Is manual feeding and control required for this machine?**

A: Yes, this machine requires manual feeding and manual control with motorized roller pressure mode for accurate and fast edge sealing process.

- **Q: Does the machine have an automatic thermostat?**

A: Yes, the machine has an automatic thermostat that ensures the melt glue is uniform and extends the hot melt glue carbonization time effectively.

- **Q: What is the durability of the machine's parts?**

A: The machine uses high-temperature-resistant plastic synthesis for non-metal parts, which eliminates oxidation problems. The iron shell and aluminum parts are treated with chrome plating or spray paint, providing a beautiful appearance and good corrosion resistance.

Thank you for choosing our products, please read these instructions carefully before using it.

Preface

Please properly keep this manual that includes product features and detailed operation instructions, unpack the instrument and related accessories for inspection, and contact the supplier or manufacturer if an abnormality is found.

Warranty

We provide a one-year warranty, if there are any problems during use, please contact us in time, we will do our best to provide you with after-sales service.

How to contact the seller on Amazon?

Go to your orders. Find your order in the list. Select problem with order. Choose your topic from list displayed. Select contact seller.



Product Introduction

With our several years' research and testing, the latest products have perfect and comprehensive additional features:

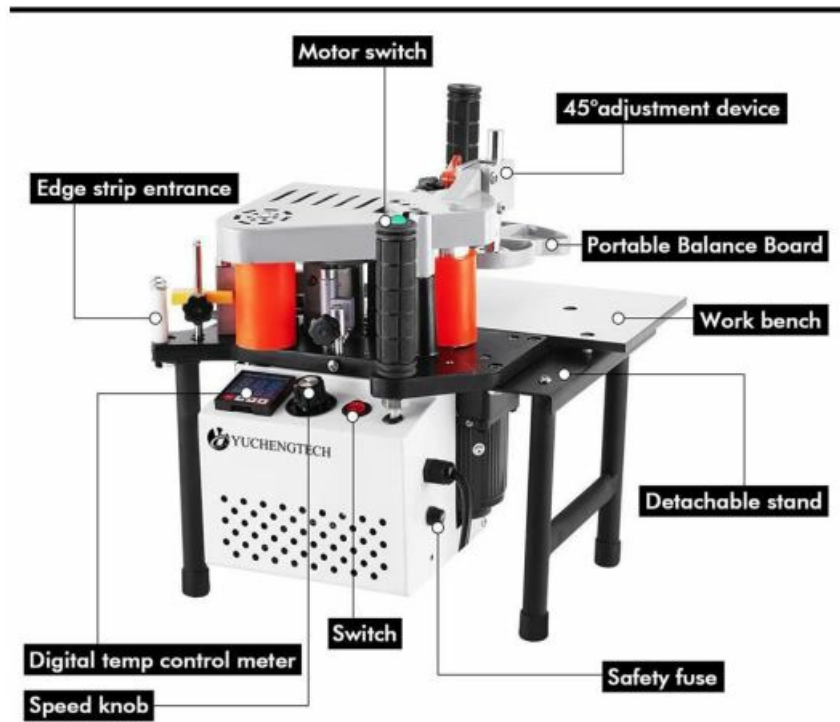
1. The width range of the sealing tape has been increased to 10 mm to 50 mm. With sealing side band and artifacts double-sided glue, the glue quantity is more even. The glue supply system is fully fixed at multiple points and is structurally stable and robust.
2. All aluminium glue basin design, with large capacity and short preheating time.
3. The temperature controller automatically controls the temperature according to the required melt temperature of the edge banding and hot melt glue.
4. Speed Regulator: the machine speed is adjusted according to the different glue application and tape pressing needs.

Materials and work pieces used by the machine:

5. Suitable for edge banding belts: Bendable melamine-impregnated paper, wood veneer, plastic and other furniture edge banding materials, and the gluing surface must be flat.
6. The plastic edge band belts must be coated with hot melt adhesive to prevent deformation when heated. For plastic edge banding belts, the gluing surface must be pre-coated with back gluing (an activator that can bond the back of the edge banding belts with the hot melt adhesive).
7. Suitable hot melt adhesives: medium to low-temperature hot melt adhesives with a melting point of 120°C – 170°C or less.
8. Suitable for work piece frame: can be glued with hot melt wood, particle board, medium fiber board, particle board and another plate frame.

Product Structure

Note: When adjusting the gap between the tape plate and the glue roller, be sure to observe that the tape plate does not top the gluing roll. The smaller the gap between the pressure strip plate and the glue roller the better but not to hang on to the glue.



Note: The height limit at the entrance of the side sealing belt, and the best height limit at the exit is 1mm higher than the side sealing belt. The amount of glue in the rubber roll should not be too large, and the uniform glue shall prevail.



Panel Description



Temperature Adjustment



Speed Adjustment



- **PV:** the current temperature
- **SV:** set temperature
- **SET key:** set
- **Key:** Adjustable number one digit to the left
- **▼ Key:** adjustable value minus 1
- **▲ Key:** adjustable value plus one

When adjusting the temperature light press SET key firstly, after being SV value flashing, press“▲ key” or “▼ key”to select temperature. After adjusting the melt glue temperature, gently press the SET key again to complete the setting.

Wait for the PV value to reach the required temperature, and then wait for 2-5 minutes to start edge banding.

Product Specification

- **Rated voltage:** 220V
- **Glue capacity:** 1000 ml
- **Rated power:** 1200W
- **The heating time:** 5 min to 10 min
- **Sealing side speed:** 2- 6 m/min
- **Operating temperature:** 150°C-170°C
- **Edge banding width:** 10mm to 50mm
- **Continuous working time:** 10h or less
- **Edge thickness:** 0.3-3mm
- **Size:** 400 x 360 x 370 (mm)
- **Gluing method:** Double-sided gluing

- **Net weight:** 9.0 kg

Product Features

1. First of all, it can be directly applied to the plate straight line and arc irregular border sealing operation. The portable edge banding machine is suitable for a variety of different materials of the edge banding tape.
2. This portable woodworking edge banding machine can be arbitrarily converted to the workplace, can reach the decoration site construction, suitable for the decoration industry.
3. The special design of the glue pot: the increased volume of the glue pot and the significantly reduced pre-heating time ensure sufficient glue melting capacity.
4. Manual feeding and manual control with motorized roller pressure mode, can be accurate and fast edge sealing process. Each part of the work design is strict and orderly, there will be no degumming overflow phenomenon.
5. Automatic thermostat, melt glue uniform, effectively extend the hot melt glue carbonization time.
6. Adopting double coating type design, the amount of glue is even and stable.
7. High-temperature resistant plastic synthesis, eliminating the oxidation problem of non-metal parts.
8. Iron shell and aluminium parts are treated with chrome plating or spray paint. Beautiful appearance and Good corrosion resistance.

How to use

• Step 1

When using for the first time, please open the glue lid, add the appropriate amount of hot melt glue to the glue pot, and confirm the use of medium-temperature glue. (Note: The machine itself has a small amount of glue. Under the influence of weather, the glue brought by the machine will melt, so there will be a small amount of glue in the glue pot, which is normal.)

• Step 2

After confirming that the motor switch is off, turn on the power, press the power switch and adjust the melting temperature of the temperature controller to 116°C to start the preheating work.

• Step 3

Preheat for 5~ 10 minutes, confirm that the hot melt glue is all melted, open the motor switch, adjust the speed control knob to the highest speed for gluing.

• Step 4

When the double glue roller all glue, also glue evenly amount, adjust the speed control knob, slow down the motor speed to reach the sealing speed you need.

• Step 5

Before edge banding, adjust the front, middle and back three press-tape devices to the appropriate position according to the width and thickness of the edge banding (Note: when adjusting the press-tape plate, it is necessary to adjust the gap to the maximum, and then adjust the appropriate gap after sending it into the edge banding strip, otherwise it is easy to make the press-tape plate stick hot melt adhesive, difficult to clean). According to the width of the side sealing belt, the height limit at the entrance of the side sealing belt, and the best height limit at the exit is 1mm higher than the side sealing belt.

• Step 6

After confirming that the edge banding is compatible with the wood sheet, slowly feed the edge banding and

start sealing.



Operation video



Operation demonstration



How to adjust the glue volume



Portable edge banding



Replace the fuse

Safety Guidelines

1. Please check the power supply voltage before use, and the voltage must be in line with the rated voltage of the machine. A three-hole socket with a valid ground cable must be used.
2. Keep your hands dry during use and make sure you are wearing hand and foot protection with insulation. When cleaning, the power supply must be unplugged.
3. The power cord must not be subjected to high temperatures or strong Operation video Operation demonstration How to adjust the glue volume pulls and must not be stored entangled in the machine. If the power cord is damaged, to avoid danger, it must be replaced by the manufacturer or a specialist before it can be used again. You can contact us at any time.
4. Do not place the machine's heat-prone parts close to the skin to prevent overheating burns.
5. Please be careful not to place clothing or any part of your body near the rotating parts during use to prevent irreversible damage. to prevent irreversible damage.
6. Do not use the edge sealer near LPG or other flammable and explosive substances (e.g. volatile agents, aerosols, etc.) to prevent fire.
7. Please keep the air flowing freely to prevent damage to the machine parts from overheating. Ensure that the glue pot is clean and no debris should enter it to prevent damage to the gibbet.
8. Turn off the switch and unplug the edge sealer when you have finished using it. After cooling, put it in a cool and dry place for storage.
9. When the power is switched on, if any abnormalities are found, the power should be switched off immediately, unplugged and checked and repaired by a professional before use.

Keep water away from this machine!

Selection of edge-sealing hot melt adhesives

Edge sealing hot melt adhesive for edge bonding is a kind of adhesive specially used for edge bonding of artificial board. It is a solvent-free thermoplastic adhesive. When heated to a certain temperature, the hot melt glue becomes molten. When it is applied to the surface of the wood-based panel substrate or edge sealing material, it is cooled to become solid state, and the edge sealing material and the base material are bonded together. For the selection and use of edge-sealing hot melt adhesives, the following must be noted:

1. Base material for edge sealing hot melt adhesives

According to the different base materials of edge sealing hot melt adhesives can be divided into three categories:

- EVA (ethylene-vinyl acetate copolymer resin) base material hot melt adhesive, this hot melt adhesive can be divided into two categories with filler and no filler. The use of EVA as the base material is the most common edge sealing hot melt adhesive production technology, it is the main limitation is the heat resistance of poor performance. The ambient temperature of board furniture sealed with EVA hot melt adhesive shall not be higher than 120°C
- POL YAMIDE(polyamide) base material hot melt adhesive: This hot melt adhesive has good heat resistance and fast curing characteristics, the main disadvantage is expensive.
- HMPU (polyurethane) based hot melt adhesive: It is the best performing type of hot melt adhesive and is a guarantee of high-quality board sealing. It is expensive and requires special application methods.

2. The viscosity of the edge sealing hot melt adhesive

The viscosity of the edge sealing hot melt adhesive does not directly reflect the good or bad performance of the adhesive. In general, the higher the viscosity of the edge sealing hot melt adhesive, the better its initial adhesive strength, but the worse the coating performance. Low-viscosity hot melt glue has a smaller coating volume and better wetting performance. Some viscosities cure very quickly and may also have High initial adhesive strength. For poor-quality chipboard, sealing requires a higher viscosity hot melt. This is due to the poor fluidity of the high-viscosity hot melt adhesives. It is not as easy to get into the pores of the chipboard edges during gluing as a low-viscosity hot melt adhesive, so that the hot melt adhesive can be fully coated on the edges of the board.

The use of edge-sealing adhesives

1. Temperature during edge sealing

As the performance of the edge sealing hotmelt is influenced by the temperature, the temperature is very need to pay attention to indicators. The hot melt adhesive temperature, substrate temperature, edge sealing material temperature and working environment temperature are very important edge sealing parameters. If the ambient temperature is too low when edge sealing, the hot melt glue will have cured before connection, resulting in a glue that will stick to the substrate but not to the sealing material. It is best to keep the temperature of the substrate above 20°C and, if necessary, to preheat the board and sealing material.

2. Sealing rubber line processing

After the edge sealing between the plate and the glue line will hurt the appearance of the board-type furniture. If the amount of glue applied is too large, the glue line will be obvious. On the contrary, it will reduce the strength of the sealing edge. For the phenomenon of discontinuous or uneven glue line, the reasons are many,

we should consider several reasons comprehensively: the cutting precision of the plate, the edge of the plate must maintain 90° Angle with its plane, the rubber roll is intact, whether the hot melt glue on it is uniform, whether the amount of glue is appropriate. The sealed sheets should be kept in a clean, less dust place. In the finishing process, avoid contact between dirty things and the glue line.

3. The requirements of hot melt adhesives for base material and sealing materials:

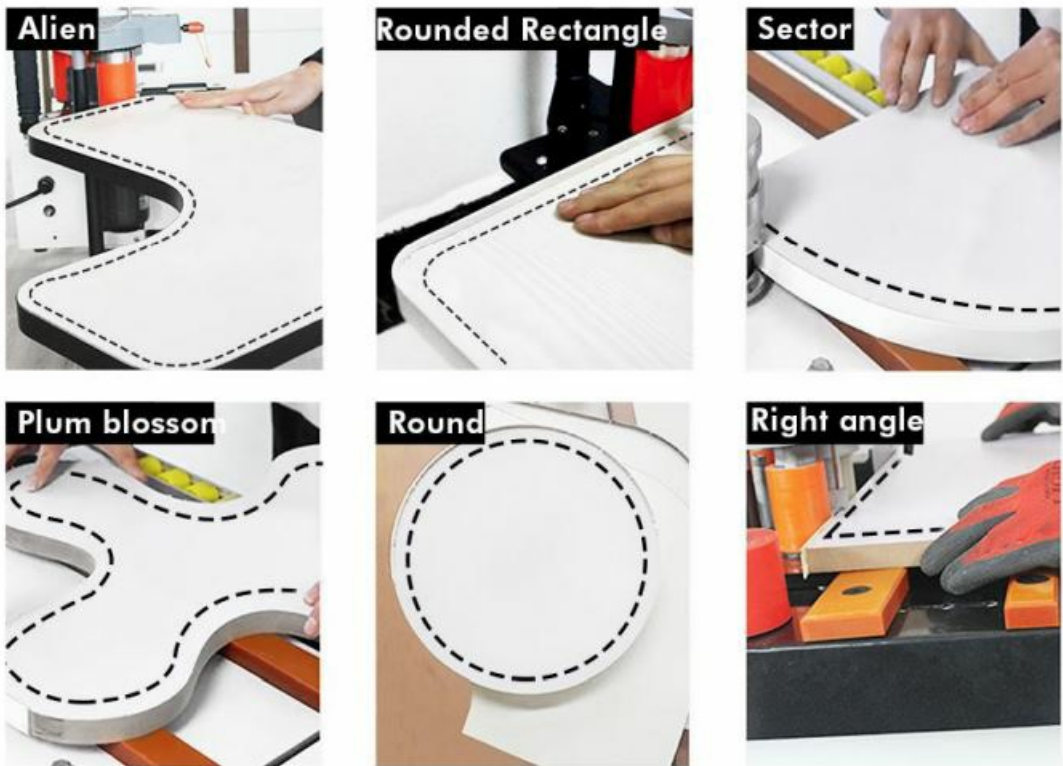
1. It is difficult to seal the edge of the substrate rich in oil. Because oily substances will reduce the affinity of the plate and glue, the bonding strength will be greatly reduced for a long time, resulting in the edge strip off.
2. In general, the temperature of the panels and sealing materials should be kept above room temperature to ensure the quality of the sealing.
3. The moisture content of the board and wood bark can not exceed 12%, the moisture content is too high, will make the hot melt adhesive in advance curing and wettability decline, thus reducing the bonding strength.
4. When the fireproof board is used as the edge sealing material, because the back of the fireproof board often has residual substances that are not conducive to bonding, so before the edge sealing, the back of the fireproof board should be treated with universal adhesive or appropriate solvent, to obtain a good edge sealing effect.
5. Some PVC side tape, because of its back processing is not good, often cause edge difficulties.

Maintenance

1. When the edge banding machine is not working, the temperature of the glue pot should be properly reduced. On the one hand, it can avoid carbonization of hot melt glue at the use temperature for a long time, keep the glue tank clean, and do not cause blockage of the glue supply system and reduce the heating performance. On the other hand, when working again, the glue can be quickly heated up to the use temperature. In addition, more than 2/3 of the glue must be kept in the glue pot, otherwise black carbide will be produced around the glue pot.
2. The glue pot and glue roller should be cleaned regularly. This is because excessive carbide around the glue pot and residue on the glue roller will reduce the performance of the heating system.
3. If the glue residue is to be removed from the glue tank, this can be done before the edge sealer stops working. When the glue is still molten, put a T-shaped object into the glue, wait for the glue to cool down completely and then reheat it. As the glue at the bottom and around the glue can is first heated and melted, the T-shaped object can then be used to remove most of the residual glue. The residual glue is then cleaned with organic solvents (petrol, banana water, etc.

Application

Applicable to a variety of border shapes



Suitable for all kinds of plates



Documents / Resources

	<p>YUCHENGTECH Portable Edge Banding Machine [pdf] User Manual Portable Edge Banding Machine, Edge Banding Machine, Banding Machine, Machine</p>
--	--

References

- [User Manual](#)

[Manuals+](#), [Privacy Policy](#)