



YOTON YM05 MP3 Player with Bluetooth User Guide

[Home](#) » [Yoton](#) » YOTON YM05 MP3 Player with Bluetooth User Guide 

Contents

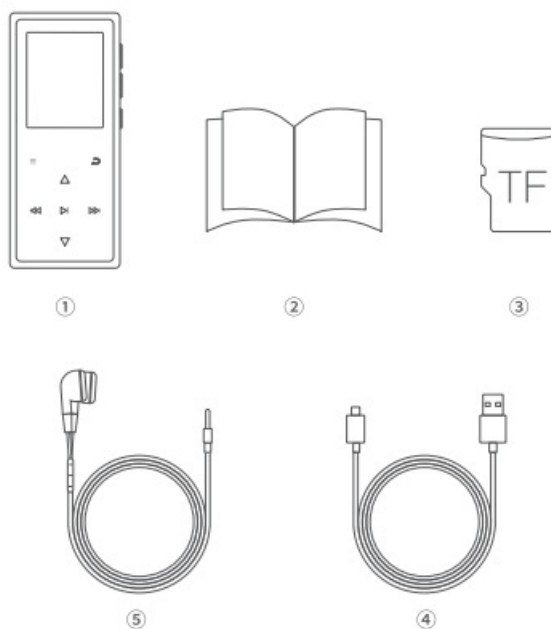
- [1 YOTON YM05 MP3 Player with Bluetooth](#)
- [2 Package](#)
- [3 Product](#)
- [4 Quick Start Guide](#)
- [5 Warranty](#)
- [6 FAQs](#)
- [7 Documents / Resources](#)
- [8 Related Posts](#)

Yoton

YOTON YM05 MP3 Player with Bluetooth

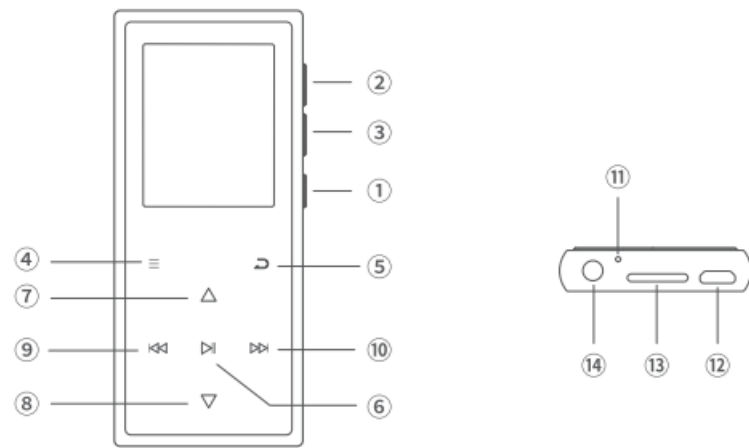


Package



1. MP3 Music Player
2. Quick Guide
3. 64GB TF Card (is in the MP3 already)
4. USB Cable
5. Earphone

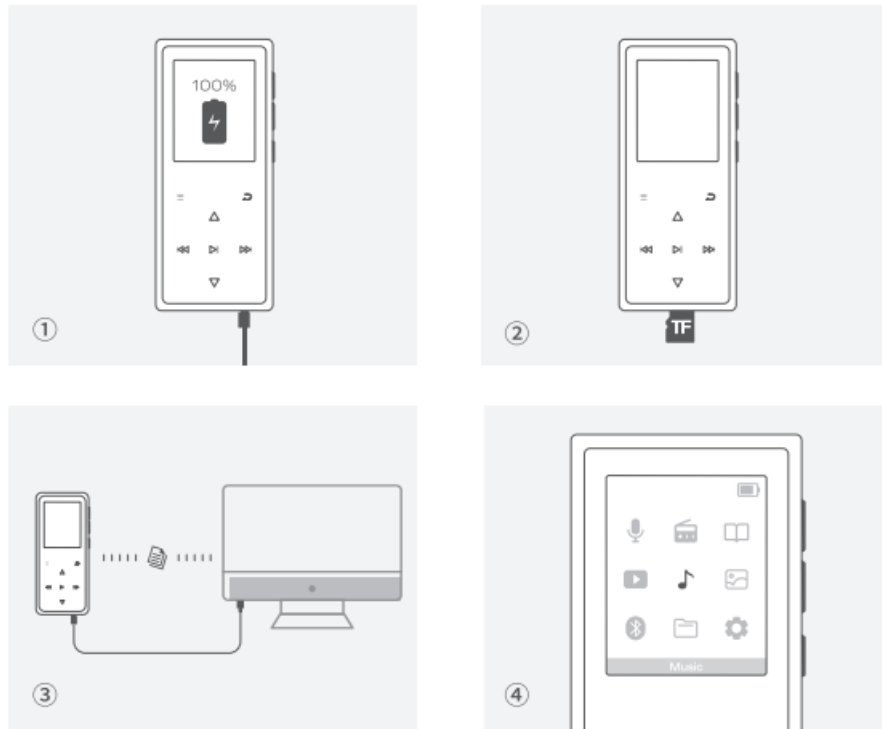
Product



1. Power/Lock-Unlock
2. Volume+
3. Volume-
4. Menu
5. Back
6. Pause/Play/Confirm
7. Scroll up
8. Scroll down
9. Left/Previous/Rewind
10. Right/Next/Forward
11. Reset Switch Hole
12. Micro USB
13. TF card Slot
14. Earphone Jack

Quick Start Guide

1. Fully Charge your MP3.
2. Make Sure you've inserted the TF Card into your MP3.
3. Transfer files to your MP3 via your Computer.
4. Start your listening experience.

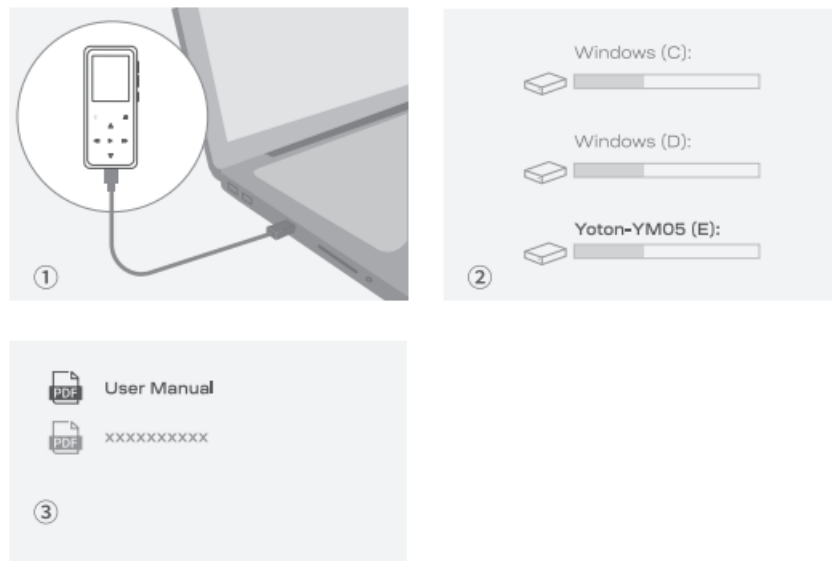


Detailed Owner's Manual

For environmental protection purposes, we prepared a detailed electronic owner's manual for your reference in addition to this quick manual, and the PDF manual is in the MP3 player's files already.

Steps to get it:

1. Connect the MP3 player within the files list in the MP3 player.
2. Find the MP3 player in "MY COMPUTER"
3. Find the manual within the files list in the MP3 player.



Warranty

Thank you for choosing Yoton products! Feel free to reach out whenever you have any questions or concerns, we respond promptly and professionally.

For all customers, we provide:

1. 30-day return policy
2. 12-month replace policy
3. Lifetime professional after-sales support

Contact us through:

ALL: support.mp@yoton.co

CIS: support.mp.us@yoton.co

EU: support.mp.eu@yoton.co

JP: support.mp.jp@yoton.co

Sincerely Hope this Yoton MP3 music player could bring you not only listening but also a kaleidoscope's own world.

FAQs

1. Do I need to fully charge the MP3 before use?

- Yes, we advise you to fully charge the MP3 before use. Generally speaking, it takes about 2 hours. And the battery [370mAh] will last about 21h under 60% volume when connected with wired earphones.

2. Where is the reset button and how do I use it?

- The reset hole is beside the earphone hole. Reset the MP3 when the device freezes or encounters connection issues. use something small like a paper clip to poke into the reset pole to reset successfully.
- **PS:** We advise you to update the firmware to the latest version when an updated version is released.

3. How do I transfer files from computers?

- Connect the MP3 to your computer via USB cable—Select “Charge and Transfer” (Data transmission)—Find the MP3 in your computer—Transferring files (Do not disconnect without ejecting first)—Click the “USB” icon to safely move the MP3 and unplug the USB cable.
- **PS:** Support Windows 7/8/8.1/10/XP/Vista/2001/Mac OS/Linux

4. Any requirements on file format?

- Generally speaking, it supports MUSIC in MP3/ VVMA/OGG/APE/FLAC/-
- WAV/AAC-LC/m4a format, VIDEO in AMV formats, RECORDING in WAV/MP3 format, and IMAGE in JPEG/BMP/GIF format.
- **PS:** Bluetooth Mode, only supports Music in MP3/WMA/WAVE/FLAC/APE format.


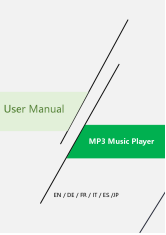
5. Other than listening to music, what else can I use the MP3 for?

- You can use it to record voice memos or listen to FM radio (only for wired earphones which is a kind of antenna for radio), read E-books, browse pictures, watch videos, and use it as a stopwatch and pedometer.

6. Where is the electronic user manual?

- For environmental protection, we provide the electronic user manual as a file within the MP3 player. You can locate it by connecting the MP3 player to the computer.

Documents / Resources

| | |
|---|--|
|  | <p>YOTON YM05 MP3 Player with Bluetooth [pdf] User Guide</p> <p>YM05 MP3 Player with Bluetooth, YM05, MP3 Player with Bluetooth, Player with Bluetooth, Bluetooth</p> |
|  | <p>YOTON YM05 MP3 Player with Bluetooth [pdf] User Manual</p> <p>YM05 MP3 Player with Bluetooth, YM05, MP3 Player with Bluetooth, Player with Bluetooth, Bluetooth</p> |