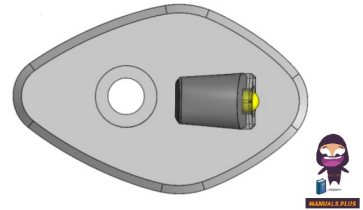


**YOSHIMURA**  
CRF250L Rally Front  
Micro Turn Signal Kit



# YOSHIMURA CRF250L Rally Front Micro Turn Signal Kit Instructions

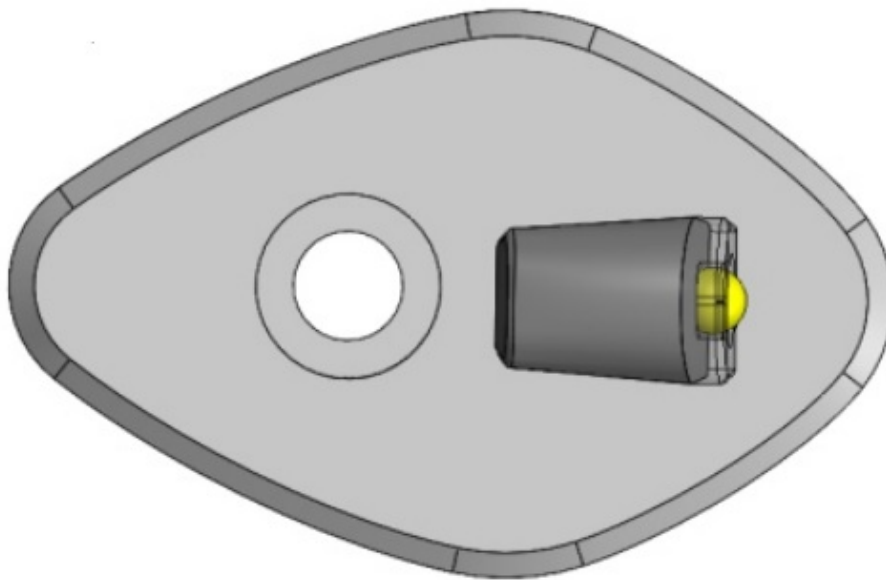
[Home](#) » [YOSHIMURA](#) » YOSHIMURA CRF250L Rally Front Micro Turn Signal Kit Instructions 

## Contents

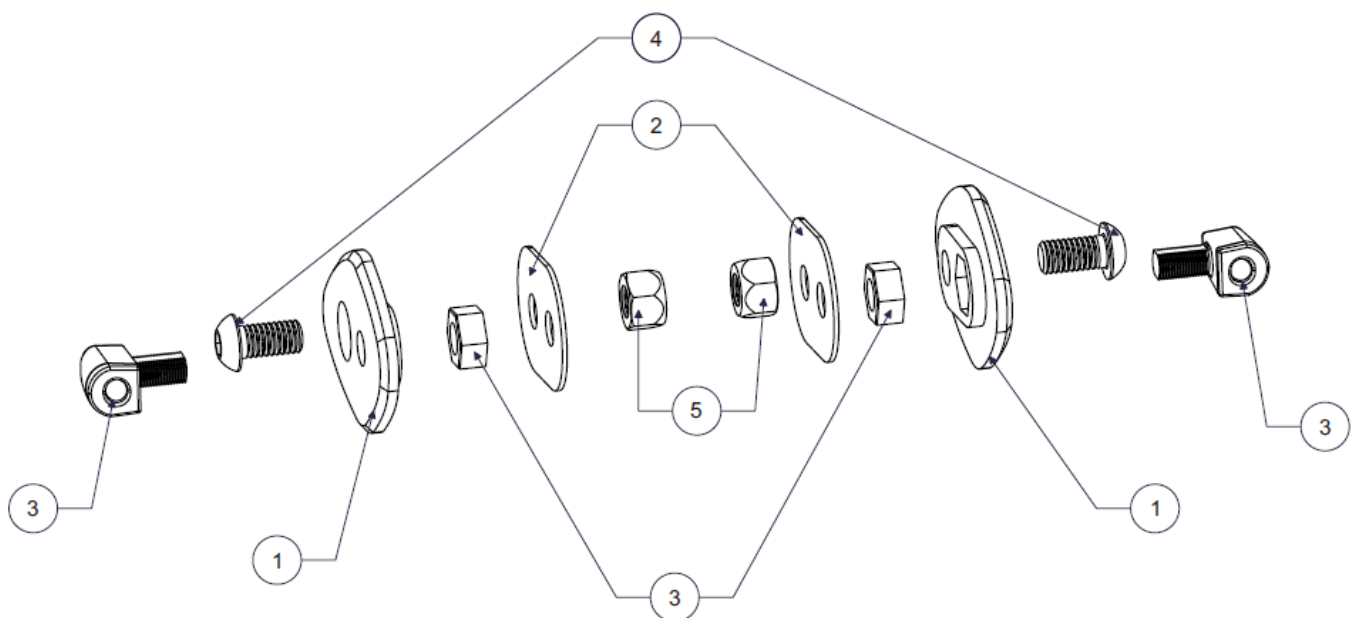
- [1 YOSHIMURA CRF250L Rally Front Micro Turn Signal Kit](#)
- [2 Removal](#)
- [3 Installation](#)
- [4 Documents / Resources](#)
  - [4.1 References](#)

**YOSHIMURA**

**YOSHIMURA CRF250L Rally Front Micro Turn Signal Kit**



## Parts Description



No.	Item	Description	Qty.
1	074BG123410-F	Front Turn Signal Plate	2
2	074BG121220-B	Turn Signal Backing Plate	2
3	072BGMICRTSR	Micro LED Turn Signal Kit	1
4	M6X12BHS	6mm x 12mm Button Head Cap Screw	2
5	6MMLN	M6 X 1.0 Nylon Lock Nut	2

## Removal

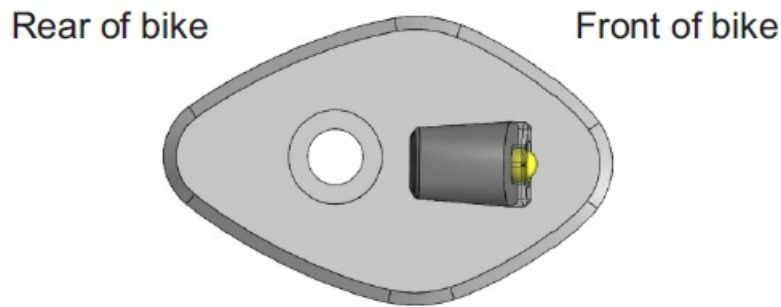
1. Follow the steps in the factory service/owner's manual to remove the windscreen and headlight assembly.
2. Locate, identify, and disconnect the turn signal connectors from the harness.
3. Remove left and right turn signals from the turn signal holders.
4. Cut the turn signal wires 4" from the male connector and strip the ends.

**Note:** Daytime Running Light functionality will be lost with the micro turn signals. Factory Daytime Running Light wires have a white stripe along with the color corresponding to the side they're on.

## Installation

1. Place the micro turn signal in the front hole and plastic hex nut in the inside pocket of 074BG123410-F, front turn signal plate.

**Note:** Proper positioning of the micro turn signal in the adapter plate is dependent on the orientation of the plastic nut. If the turn signal is not facing forward, remove and rotate the plastic nut in the adapter plate pocket and re-install the turn signal. Repeat until the turn signal is facing forward.



### Right Side Example Shown

2. Insert the turn signal adapter plate into the turn signal holder from the outside.
3. Insert 074BG121220-B metal plate on the inside of the turn signal holder and route the turn signal wires through the corresponding hole. Secure the metal plate with the 6MMLN locking nut.

**Note:** Inserting the M6X12BHS screw into the adapter plate first may assist with the aligning and mounting of the metal inner plate.
4. Using the solder shrink connectors supplied in the micro turn signal kit, connect turn signal wires to microlight wires as follows:
  - **Right (Blue Connector):**
    - Green (Harness) – Black
    - Blue (Harness) – Blue
  - **Left (Orange Connector):**
    - Green (Harness) – Black
    - Orange (Harness) – Blue
  - **a)** Strip the stock turn signal wire ends 1/4" – 1/2" and insert into BN-SSS-22-18, solder shrink connectors provided in the kit.
  - **b)** Center the spliced wire ends in the middle and using a heat gun or lighter, apply heat evenly on the outer edges of the solder shrink connector to shrink and hold wires in place.
  - **c)** Making sure that the stripped ends are centered, heat the center of the solder shrink connector evenly until the solder begins to liquefy.
  - **d)** Allow to cool completely and tug both ends of the wires to verify that the connection is secured.

Scan for a link to the solder shrink connector instruction video.



**Scan the QR code on the micro turn signal packaging for the wiring diagram.**

- **Note 1:** The white running light wire and red brake light wire on the micro signals will not be used. Bundle back up and tuck away.
  - **Note 2:** A red front light is prohibited in most states. Check with local laws and regulations before installation.
5. Repeat the steps for the opposite side.
  6. Check for the proper function of turn signals and that all components are secure before riding.
  7. Re-install the headlight assembly and windscreen using the reverse steps of removal.

## RESEARCH&DEVELOPMENT OF AMERICA, INC.

- 5420 DANIELS STREET STE A, CHINO CA., 91710
- [800-634-9166](tel:8006349166)
- [909-628-4722](tel:9096284722)
- FAX [909-591-2198](tel:9095912198)
- [www.yoshimura-rd.com](http://www.yoshimura-rd.com).

## Documents / Resources

	<p><a href="#">YOSHIMURA CRF250L Rally Front Micro Turn Signal Kit</a> [pdf] Instructions CRF250L Rally, CRF300L Rally, CRF250L Rally Front Micro Turn Signal Kit, CRF250L Rally, Front Micro Turn Signal Kit, Micro Turn Signal Kit, Turn Signal Kit, Signal Kit, Kit</p>
---	--

## References

- [User Manual](#)

[Manuals+](#), [Privacy Policy](#)

This website is an independent publication and is neither affiliated with nor endorsed by any of the trademark owners. The "Bluetooth®" word mark and logos are registered trademarks owned by Bluetooth SIG, Inc. The "Wi-Fi®" word mark and logos are registered trademarks owned by the Wi-Fi Alliance. Any use of these marks on this website does not imply any affiliation with or endorsement.