



YOLINK YS7904-UC Water Level Monitoring Sensor User Guide

[Home](#) » [YOLINK](#) » YOLINK YS7904-UC Water Level Monitoring Sensor User Guide 

Contents

- 1 YOLINK YS7904-UC Water Level Monitoring Sensor
- 2 Product Information
 - 2.1 Product In the Box
- 3 Product Usage Instructions
- 4 Before You Begin
- 5 In the Box
- 6 Required Items
- 7 Get to Know Your Sensor
- 8 Get to Know Your Sensor, Cont
- 9 Install the App
- 10 Add Your Sensor to the App
- 11 Power-Up
- 12 Installation
- 13 Contact Us
- 14 Documents / Resources
 - 14.1 References
- 15 Related Posts

YOLINK

YOLINK YS7904-UC Water Level Monitoring Sensor



Product Information

The Water Level Monitoring Sensor is a smart home device manufactured by YoLink. It is designed to monitor the water level in a tank or reservoir and send real-time alerts to your smartphone via the YoLink app. The device connects to the internet via a YoLink hub and does not connect directly to your WiFi or local network. The package includes a Water Level Monitoring Sensor, a float switch, two AAA batteries, a mounting hook, a cable tie mount, a cable tie, and stainless steel washers.

Product In the Box

- Water Level Monitoring Sensor
- Float Switch
- Mounting Hook
- 2 x AAA Batteries (Pre-Installed)
- Cable Tie Mount
- Cable Tie
- Quick Start Guide

Requirements

A YoLink hub (SpeakerHub or the original YoLink Hub) is required to connect the Water Level Monitoring Sensor to the internet and enable remote access from the app. The YoLink app must be installed on your smartphone, and the YoLink hub must be installed and online.

LED Behaviors

- Blinking Red Once: Water Alert – Water Detected or Water Not Detected (Depending on Mode)

- Blinking Green: Connecting to Cloud
- Fast Blinking Green: Control-D2D Pairing in Progress
- Slow Blinking Green: Updating
- Fast Blinking Red: Control-D2D Unpairing in Progress
- Blinking Red And Green Alternately: Restoring to Factory Defaults

Product Usage Instructions

1. Download the full Installation & User Guide by scanning the QR code in the Quick Start Guide or visiting <https://shop.yosmart.com/pages/water-level-monitoring-sensor-product-support>.
2. Install the YoLink app on your smartphone if you haven't already.
3. Install the YoLink hub (SpeakerHub or the original YoLink Hub) and connect it to the internet.
4. Insert the two AAA batteries (pre-installed) into the battery compartment of the Water Level Monitoring Sensor.
5. Attach the mounting hook to the wall where you want to mount the sensor.
6. Hang the Water Level Monitoring Sensor on the mounting hook using the wall-mounting slot.
7. Attach the float switch to the sensor using the included cable tie and cable tie mount.
8. Adjust the orientation of the float switch by removing the C-clip if necessary.
9. Use double-sided mounting tape and rubbing alcohol pads (not included) to secure the sensor and float switch in place.
10. Open the YoLink app and follow the on-screen instructions to add the Water Level Monitoring Sensor to your network.
11. Customize your settings and alerts in the YoLink app to receive real-time notifications about changes in water level.

Welcome!

Thank you for purchasing YoLink products! We appreciate you trusting YoLink for your smart home & automation needs. Your 100% satisfaction is our goal. If you experience any problems with your installation, or with our products, or if you have any questions that this manual does not answer, please contact us right away. See the Contact Us section for more info.

Thank you!

Eric Vanzo

Customer Experience Manager

Before You Begin

Please note: this is a quick start guide, intended to get you started on the installation of your Water Level Monitoring Sensor. Download the full Installation & User Guide by scanning this QR code:



Installation & User
Guide

You can also find all current guides and additional resources, such as videos and troubleshooting instructions, on the Water Level Monitoring Sensor Product Support Page by scanning the QR code below or by visiting: <https://shop.yosmart.com/pages/water-level-monitoring-sensor-product-support>.



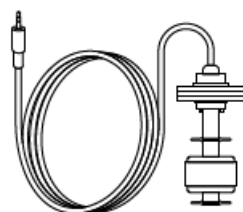
Product Support
Support produit
Soporte de producto

Your Water Level Monitoring Sensor connects to the internet via a YoLink hub (SpeakerHub or the original YoLink Hub), and it does not connect directly to your WiFi or local network. In order for remote access to the device from the app, and for full functionality, a hub is required. This guide assumes the YoLink app has been installed on your smartphone, and a YoLink hub is installed and online (or your location, apartment, condo, etcetera, is already served by a YoLink wireless network).

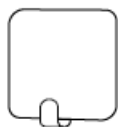
In the Box



Water Level
Monitoring Sensor



Float Switch



Mounting Hook



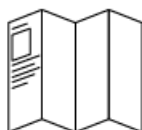
2 x AAA Batteries
(Pre-Installed)



Cable Tie Mount



Cable Tie



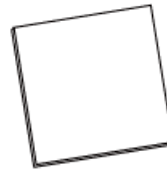
Quick Start Guide

Required Items

The following items may be required:

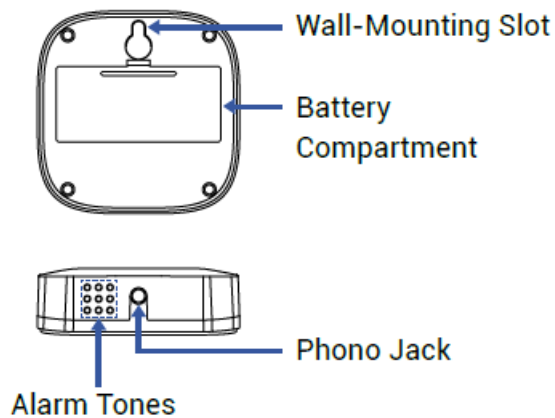


Double-Sided
Mounting Tape



Rubbing Alcohol
Pads

Get to Know Your Sensor



- **One Beep**

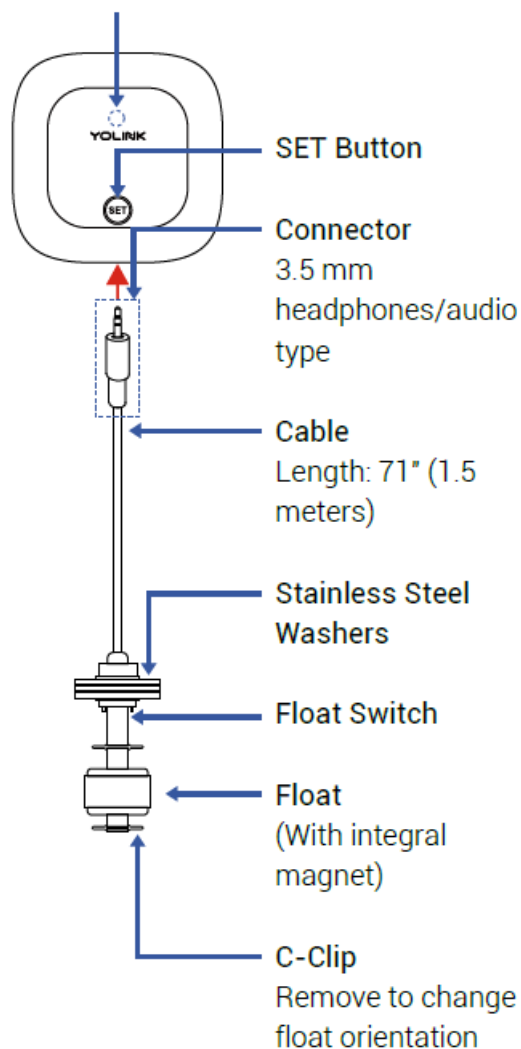
Device power-up/button pressed

- **Two Beeps**

Water Alert (Two beeps every 2 seconds for the first minute. Two beeps every 5 seconds for the next 12 hours. Sustaining two beeps once a minute after 12 hours)







Status LED

Not visible while there is no operation with the SET button or while the device is in normal monitoring status



Get to Know Your Sensor, Cont

LED Behaviors

-  **Blinking Red Once**
 - Water Alert
 - Water Detected or Water Not Detected (Depending on Mode)
-  **Blinking Green**
 - Connecting to Cloud
-  **Fast Blinking Green**
 - Control-D2D Pairing in Progress
-  **Slow Blinking Green**
 - Updating
-  **Fast Blinking Red**
 - Control-D2D Unpairing in Progress
-  **Blinking Red And Green Alternately**
 - Restoring to Factory Defaults

Install the App

- If you are new to YoLink, please install the app on your phone or tablet, if you have not already. Otherwise, please proceed to the next section.
- Scan the appropriate QR code below or find the “YoLink app” on the appropriate app store.



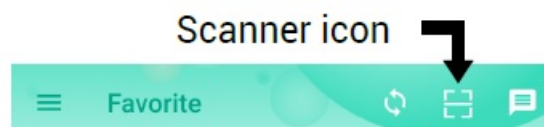
Apple phone/tablet
iOS 9.0 or higher

Android phone/
tablet 4.4 or higher

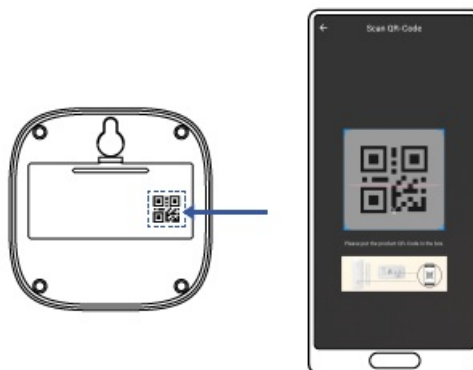
- Open the app and tap Sign up for an account. You will be required to provide a username and a password. Follow the instructions, to set up a new account. Allow notifications, when prompted.
- You will immediately receive a welcome email from no-reply@yosmart.com with some helpful information. Please mark the yosmart.com domain as safe, to ensure you receive important messages in the future.
- Log in to the app using your new username and password.
- The app opens to the Favorite screen. This is where your favorite devices and scenes will be shown. You can organize your devices by room, in the Rooms screen, later.
- Refer to the full user guide and online support for instructions on the use of the YoLink app.

Add Your Sensor to the App

1. Tap Add Device (if shown) or tap the scanner icon:

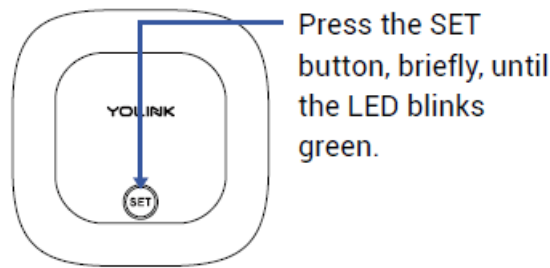


2. Approve access to your phone's camera, if requested. A viewfinder will be shown on the app.



3. Hold the phone over the QR code so that the code appears in the viewfinder. If successful, the Add Device screen will be displayed.
4. Follow the instructions to add your Water Level Monitoring Sensor to the app.

Power-Up



Installation

Sensor use considerations:

The Water Level Monitoring Sensor is a variant of the Water Leak Sensor 2 (rope/cable style water sensor), which also shares the main sensor body with the Water Leak Sensor 3 (probe cable type water sensor). All three sensors are generally identical in the app, but the settings you make in the app determine the behavior of the sensor.

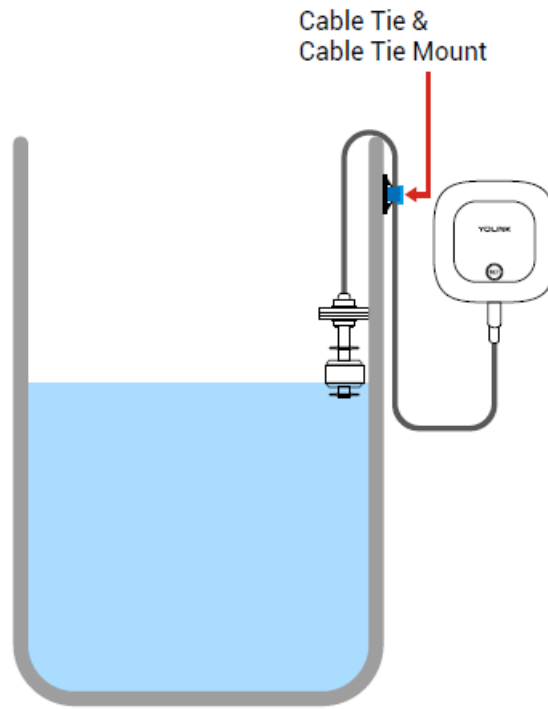
When using this sensor with a float switch, for monitoring the presence or absence of a liquid with water, in the app, you will define either liquid-detected or no-liquid-detected, as “normal”. Depending on the mode you select, the sensor will alert, and you will be notified if the liquid level drops below the float switch, OR if it rises to the float switch.

It is important to note, that even if you define “no liquid detected” as an alert (and therefore “liquid detected” as normal), you can still create some automation that will respond to the change of state from liquid detected to no liquid detected. An example of this approach, is you want to receive a push notification and SMS when no liquid is detected (something is wrong), and you want to receive a push notification, only, when liquid is detected (normal; the level of the liquid is good). You can create an automation using the Notification behavior, to receive a push notification when liquid is detected again.

Sensor location considerations:

Before installing your Water Level Monitoring Sensor, consider the following important factors:

1. This device is intended for indoor use, only. If used outdoors, the sensor body should be protected from the elements, in an environmental enclosure, for example, and the environmental conditions (temperature, humidity, etc.) should be within the specified range for the sensor (refer to online support information for the full specifications for this sensor). The sensor body should not be installed where it may get wet (indoors or outdoors).
2. The Water Level Monitoring Sensor has an integral sounder alarm (piezo sounder). Use of the sounder is optional, can it can be disabled in the app settings? The use of the sounder will reduce the total battery life.
3. The Water Level Monitoring Sensor is typically mounted on a wall or on a stable vertical surface (e.g. post or column).
4. If needed, you can add extension cables between the float switch cable and the sensor, to extend the total cable distance. Use standard 3.5 mm headphones type cables appropriate for the application (e.g. outdoor rated/waterproof)



Float switch location & installation considerations:

The float switch is designed for and intended to be suspended into the tank, container, etc. The stainless steel washers installed on the float switch have two purposes. The weight of the washers will ensure that the float switch hangs to the appropriate level in the tank, and that the cable does not coil or bend, resulting in undesired results from the float switch. Also, the wider diameter of the washers ensures the float switch can be placed against a sidewall of the tank/container, allowing the float switch to move freely.

- It is the responsibility of the installer to secure the cable so that the float switch position does not change later. For example, use zip cords/tie wraps to secure the cable to a fixed object.
- Avoid damaging the cable when securing it. If you use tie wraps, do not crimp or smash the cable by overtightening the tie wraps.

Float switch configuration:

The float switch has two float positions – high and low. When installed correctly in a vertical position, if a liquid is present, the float will rise to a high position. If there is no liquid present, it falls to the low position, by gravity. But electrically, the float switch can give four different outputs to the sensor:

- Float high, closed circuit
- Float high, open circuit
- Float low, closed circuit
- Float low, open circuit

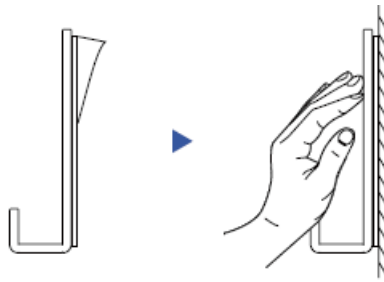
The float switch has an internal reed switch, and the small magnet inside the float magnetically opens or closes the reed switch, thereby opening or closing the circuit to the Water Level Monitoring Sensor. As shipped, your float switch should be “closed” or “shorted” when the float is in the high position and “open” when the float is in the low position. If you need to change this operation, you can do so by removing the c-clip, removing the float, and then reinstalling the float upside-down, then reinstalling the c-clip. The c-clip can be removed by gently widening the opening of the “C” shape, by hand or with a tool, like a screwdriver. Push it back in place on the float switch to install it, noting the slot for the c-clip that is in the end of the float switch. It may be helpful to have a multimeter to test the float switch configuration, but otherwise, after being connected to the sensor, the open/-closed status can be checked.

Install the float switch

1. Before installing the float switch, determine the method of securing the cable.
2. Place the float switch at the desired level in the tank/container, based on your application (liquid detected is normal, or no liquid detected is normal).
3. Secure the cable, while verifying the height of the float switch is correct.

Install the mounting hook

1. Before installing the Water Level Monitoring Sensor, check the length of the cable, ensuring there is enough, for the desired sensor location.
2. Clean the mounting surface with rubbing alcohol or a similar cleaner or degreaser that will clean the surface without leaving a residue that might effect the adhesion of the mounting tape on the bracket. The surface must be clean, dry, and free of dirt, oils, grease, or other cleaning agent residue.
3. Remove the protective plastic from the mounting tape on the back of the mounting hook.
4. With the hook facing up, as shown, press it firmly against the mounting surface and maintain pressure for at least 5 seconds.



Install and test the Water Level Monitoring Sensor

1. Insert the float switch cable connector into the Water Level Monitoring Sensor.
2. Using the slot on the back of the sensor, hang the sensor on the mounting hook. Ensure it is secure by gently tugging on it.
3. It is important that you test your sensor, to ensure it will work properly when needed! To properly test it, you may need to change the settings in the app.

Refer to the full installation and user guide and/or the product support page, to complete the settings in the YoLink app.

Contact Us

- We are here for you if you ever need any assistance installing, setting up or using a YoLink app or product!
- Need help? For the fastest service, please email us 24/7 at service@yosmart.com.
- Or call us at 831-292-4831 (US phone support hours: Monday – Friday, 9 AM to 5 PM Pacific)
- You can also find additional support and ways to contact us at: www.yosmart.com/support-and-service.

Or scan the QR code:



Support Home Page

Finally, if you have any feedback or suggestions for us, please email us at feedback@yosmart.com.

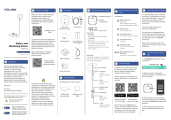
Thank you for trusting YoLink!

Eric Vanzo



Customer Experience Manager

15375 Barranca Parkway
Ste. J-107 | Irvine, California 92618
© 2023 YOSMART, INC IRVINE, CALIFORNIA.

Documents / Resources

	YOLINK YS7904-UC Water Level Monitoring Sensor [pdf] User Guide YS7904-UC Water Level Monitoring Sensor, YS7904-UC, Water Level Monitoring Sensor, Level Monitoring Sensor, Monitoring Sensor, Sensor
---	--

References

-  [Facebook icon](#)
-  [Facebook icon](#)