



Yoidesu One Handed Macro Mechanical Keyboard User Manual

[Home](#) » [Yoidesu](#) » Yoidesu One Handed Macro Mechanical Keyboard User Manual 

Contents

- [1 Yoidesu One-Handed Macro Mechanical Keyboard](#)
- [2 Keyboard Interface](#)
- [3 Keyboard Schematic](#)
- [4 Custom Key](#)
- [5 Bluetooth connection](#)
- [6 Documents / Resources](#)
 - [6.1 References](#)

Yoidesu

Yoidesu One-Handed Macro Mechanical Keyboard



Keyboard Interface



Support USB-C and BT Dual Mode.

Keyboard Schematic

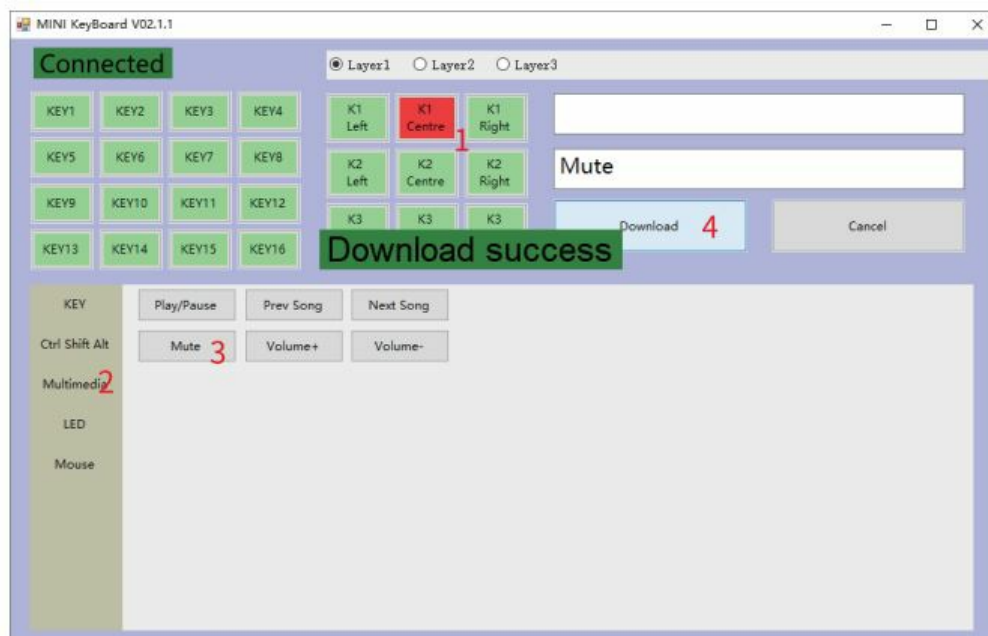


Custom Key

1. Connect with USB Type-C Cable



2. Click “Key1” → Click “Ctrl” “C” → Click “Download”



3. Click “K1 Centre” → Click “Multimedia” → Click “Mute” → Click “Download”

Bluetooth connection

First, connect with the USB cable, turn the switch to “On”, find the “HID Keyboard”, and pair it.

Attention


1. If there is no operation for 15 minutes, it will go to sleep, you can click “KEY1” to wake up, and it will automatically connect after about 2 seconds.
2. A fully charged battery lasts about 1 month.



Scan To View The Video Tutorial

3. When charging, the red light is on; when fully charged, the green light is on.

Documents / Resources

	<p>Yoidesu One Handed Macro Mechanical Keyboard [pdf] User Manual One Handed Macro Mechanical Keyboard, Handed Macro Mechanical Keyboard, Macro Mechanical Keyboard, Mechanical Keyboard, Keyboard</p>
---	--

References

- [User Manual](#)