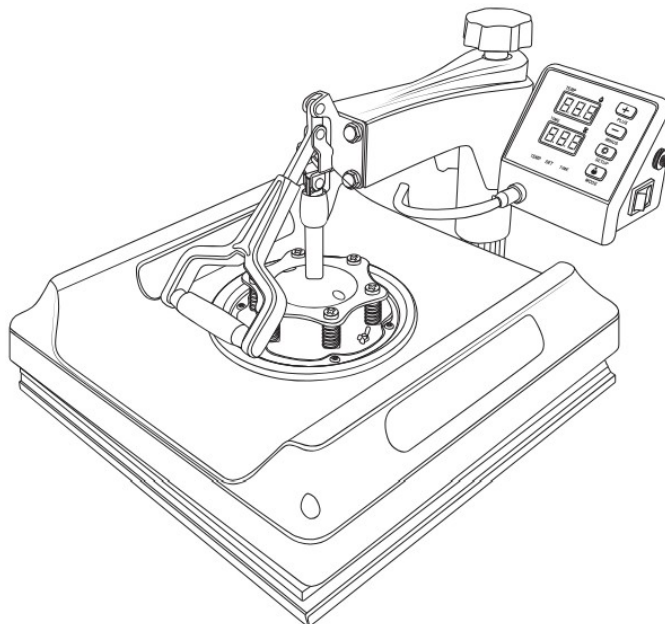




YITAHOME HPM-0016, HPM-0018 Multifunctional Digital Heat Press Machine User Manual

[Home](#) » [YITAHOME](#) » YITAHOME HPM-0016, HPM-0018 Multifunctional Digital Heat Press Machine User Manual



Contents

- 1 INTRODUCTION
- 2 PACKAGE CONTENTS
- 3 SPECIFICATION
- 4 MACHINE STRUCTURE PRESENTATION
- 5 RECOMMENDED SETTING FOR THE OBJECT
- 6 MAINTAIN NOTE
- 7 TROUBLESHOOTING
- 8 Documents / Resources
 - 8.1 References

INTRODUCTION

A heat press machine is using temperature and pressure with a certain amount of time to transfer images on items, the transfer is permanently embedded into the product.

Thank you for choosing our Heat Press Machine. Please read this user manual carefully and keep it for future reference. If you need any assistance, please contact us by email with your order number and details.

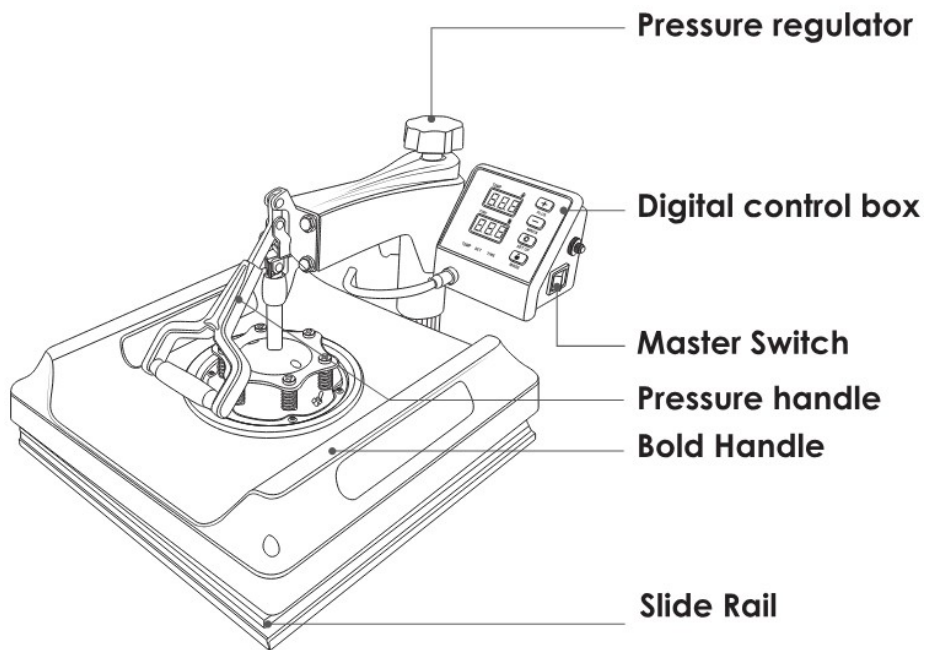
PACKAGE CONTENTS

<ul style="list-style-type: none">● 1x HEAT PRESS MACHINE● 1x USER MANUAL● 1x SCREWDRIVER● 1x HIGH-TEMPERATURE TAPE	<ul style="list-style-type: none">● 2 PLATE ELEMENTS● 20x HEAT TRANSFER PAPER● 1x POWER CORD● 2x HIGH TEMPERATURE GLOVES
--	---

SPECIFICATION

Model	HPM-0016	HPM-0018
Heat Size	12×15 inch	15×15 inch
Temperature Range	32-480°F	32-480°F
Timer Range	0-999 Seconds	0-999 Seconds
Pressure Range	0-900lbs	0-900lbs
Voltage	110 V	110 V
Power	800W	975W

MACHINE STRUCTURE PRESENTATION



Accessories installation diagram

Please perform all operations after power off



Warning

T-shirt heat press machine



1. Connect the T-shirt baking machine to the main machine and set the time and temperature
2. Stick the transferred picture on the T-shirt.
3. When the temperature reaches, place the T-shirt into the T-shirt baking machine and press tightly.

356°F 30s

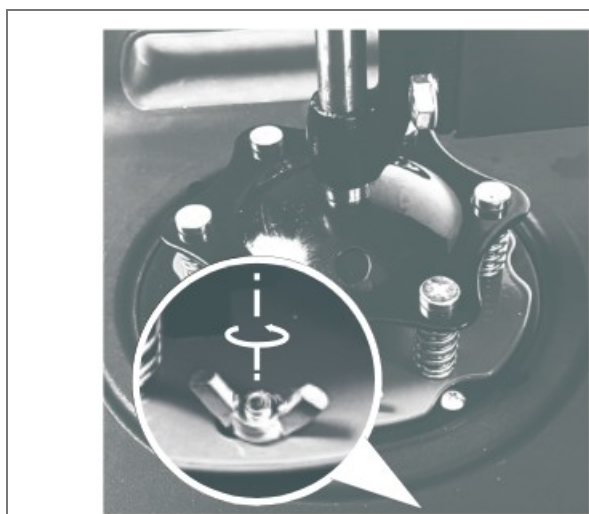
METHOD 1:

(1) CLOTH (FLAT ITEMS) PRINTING ASSEMBLY



METHOD 2: OTHER ELEMENTS ASSEMBLY

Remove 15×15 Heating Plate

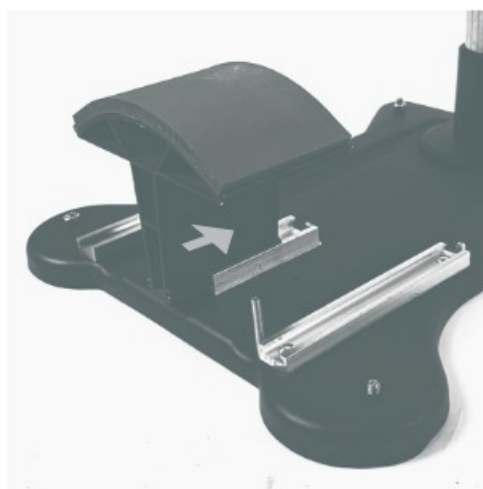


Loose the screws by hand



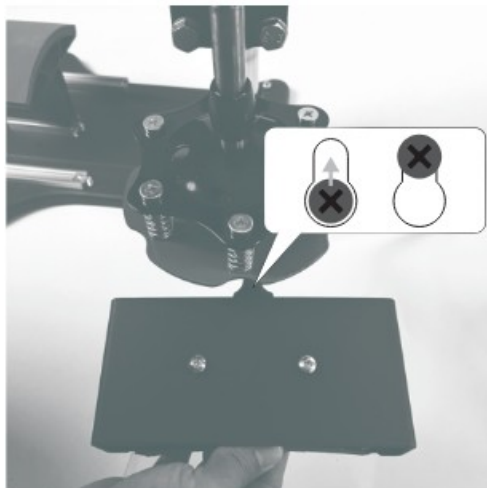
Heating board and the bracket will be

(1) HAT ELEMENTS ASSEMBLY

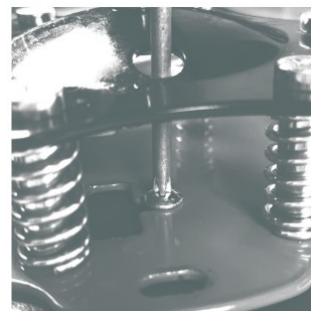


Place the hat element on the bottom bracket. Push it to the end

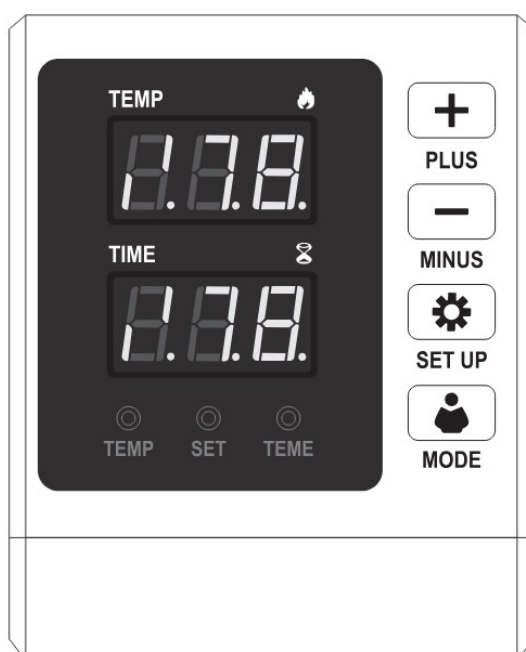
(1) HAT ELEMENTS ASSEMBLY



Put another hat element under the upper bracket. Push it to the end.



Fixed by screw



1. HOW TO TURN ON/OFF AND HOW TO START?



Press the switch button on the side of the digital box to start the machine. After setting temperature, press “MODE” button once to count down, and press again to reset.

2. HOW TO SET THE TEMPERATURE/TIME?



Press once to set the temperature, press twice to set the time and press again to exit.

3. HOW TO SET THE TEMPERATURE/TIME TO INCREASE OR DECREASE?

- + Set the time/temperature increase
- Set the time/temperature decrease

4. HOW TO CHANGE THE TEMPERATURE UNIT FROM °F AND °C?

Long Press “SET UP” button, the display will showing C-F, please press “+” or “=” to adjust C (Celsius) or F (Fahrenheit) according to your demands.

5. HOW TO DO TEMPERATURE CORRECTION?



Press and hold for 5 seconds to enter the temperature correction setting. (Range +30°C or -30°C, initial

value is 0)

HOW TO HEAT PRESSING? (FOR EXAMPLE, T-SHIRT PRINTING)

1. Make sure the wire is well connected, the power plug is well connected to the wall socket. then press the power switch to turn on.
2. Rotate the the pressure knob to get the right pressure required.
3. Set the temperature and the time you want
4. The buzzer will sound when the temperature reaches the setting temperature, then place the object (e.g T-shirt) on press bed, and let the transfer paper with images facing down the object (e.g T-shirt) (PS: Suggest put a white cloth upon the transfer paper to avoid unnecessary mark when set too high temperature.)
5. Press down the handle (meantime the sound will stop) . then press "MODE" button to count down and machine will start to transfer.
6. The buzzer will sound again when the scheduled time is up, then lift up the handle (meantime the sound will stop), the transfer work is finished

RECOMMENDED SETTING FOR THE OBJECT

- Clothing transfer: (e.g T-shirt transfer)
- Set temperature: 180-200°C (356-392°F)
- Set time: (Chemical fiber use / Fabric clothing use with sublimation paper: 35-45 seconds. 100% pure cotton clothing use with transfer paper: 20-25 second

MAINTAIN NOTE

1. Different item will require different temperature and time setting because the materials or thickness is different.
2. This machine is not suitable for children to use or for food processing.
3. Please turn off the machine and unplug the power cord when the machine is not in use.
4. The heat plate will automatically cool down to the room temperature if the heat press stays non-use for more than 30 minutes
5. For better maintenance of heat press, the maximum setting temperature is 210°C (410°F)
6. To avoid re-heating the first transfer when printing double sided T-Shirts, insert a sheet of cardboard in between the shirt, adjust the height to less pressure, then press.
7. Heat plate may pivot slightly back and forth rotationally. This is due to the movement allowance within the clamp assembly, and it is normal.

TROUBLESHOOTING

1. **The temperature is out of control: set temperature 180°C (356°F), but the actual temperature is above 200°C (392°F)**

Wait for a while and check, if the temperature keeps error beyond 20 degrees Fahrenheit, contact us and we will change a new digital controller to you.

2. **Temperature drops when machine starts transferring**

It's normal if machine drops within 10C, as the printed item is considerably cold, part of the heat is transferred

from machine to the printed item, especially when transferring patterns on mugs and plates.

3. Printed effect: print color is pale or faded image

The pressure is not high enough or the temperature is too low, pressing time is too short. Please adjust the pressure/ temperature or increase the heating time.

4. Printed effect: print color is too darkened, deep, or blurred

Reason 1: The temperature is too high / or pressing time is too long.

Please adjust the temperature or reduce the heating time.

Reason 2: Pressing time is too short/ using poor quality transfer paper.

Please increase the heating time or use high-quality transfer paper.

5. Display screen does not turn on or display screen is working but temperature is not heating up

Pls kindly send us your problems. Our staffs will give instructions according to your specific problems with patience. We will resend you the related spare parts to help solve the problems asap.


GUARANTEE

Our heat press machine is backed by 12 MONTHS product warranty.

For questions, assistance, or support, please contact the Customer Service with your order number and problem details. We will send you further information about the solution.



Documents / Resources

	<p>YITAHOME HPM-0016, HPM-0018 Multifunctional Digital Heat Press Machine [pdf] User Manual</p> <p>0016, 0018, HPM-0016 HPM-0018 Multifunctional Digital Heat Press Machine, HPM-0016, HPM-0018, HPM-0016 Multifunctional Digital Heat Press Machine, HPM-0018 Multifunctional Digital Heat Press Machine, Multifunctional Digital Heat Press Machine, Multifunctional Digital Press Machine, Digital Heat Press Machine, Heat Press Machine, Press Machine</p>
---	---

References

- [User Manual](#)

[Manuals+](#), [Privacy Policy](#)

This website is an independent publication and is neither affiliated with nor endorsed by any of the trademark owners. The "Bluetooth®" word mark and logos are registered trademarks owned by Bluetooth SIG, Inc. The "Wi-Fi®" word mark and logos are registered trademarks owned by the Wi-Fi Alliance. Any use of these marks on this website does not imply any affiliation with or endorsement.