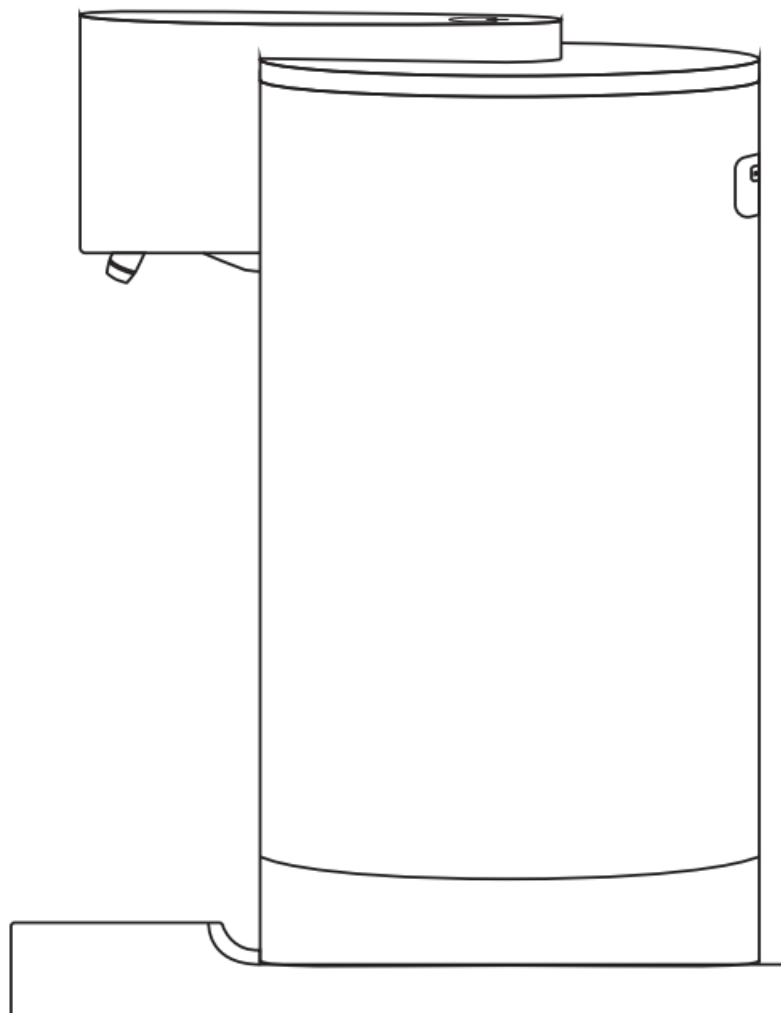




YISH Y180 Touchless Automatic Foaming Soap Dispenser Instruction Manual

[Home](#) » [YISH](#) » YISH Y180 Touchless Automatic Foaming Soap Dispenser Instruction Manual 

YISH Y180 Touchless Automatic Foaming Soap Dispenser



Contents

- [1 IMPORTANT SAFEGUARDS](#)
- [2 WHY VISH" SOAP DISPENSER?](#)
- [3 KNOWING YOUR PRODUCT \(FIG.1: Y180\)](#)
- [4 THE PRODUCT SPECIFICATION](#)
- [5 INDICATOR LIGHT ILLUSTRATION](#)
- [6 TO USE THIS SOAP DISPENSER](#)
- [7 To Refill Soap Liquid](#)
- [8 PRODUCT CERTIFICATION MARK EXPLANATION](#)
- [9 WEEE DISPOSAL INFORMATION](#)
- [10 TROUBLESHOOTING](#)
- [11 CUSTOMERS SUPPORT](#)
- [12 Documents / Resources](#)
- [13 Related Posts](#)

IMPORTANT SAFEGUARDS

This appliance can be used by children aged from 8 years and above and persons with reduced physical, sensory or mental capabilities or lack of experience and knowledge if they are supervised or have been instructed on how to use the appliance in a safe way and if they understand the hazards involved.

- Unit is only for indoor, domestic use. Using outdoors or for commercial purposes voids all warranties.
- Be sure to take good care of children and they don't play with it.

- In case of damage to the unit, stop using immediately, and contact manufacturer or a certified repair service. Unauthorized repair of this unit voids all warranties.
- Do not recharge the unit in wet and high moist environment, such as toilet, bathroom and etc., please ensure that the unit is charged in a dry environment.
- Do not immerse the product in water nor rinse it directly with water to avoid short circuits.
- Do not tilt the bottle when installing or replacing the soap. It is normal if a small amount of soap liquid overflows, it can still be used normally after wiping it clean.
- Do not use non-foaming soap in order to avoid the device from malfunctioning.
- Store this product in a cool place away from direct sunlight or heat sources.
- Only use the dispenser when the batteries and the compartment are thoroughly dry. In case the dispenser encounters any water spray, inversion, or tilt, immediately check the charging port and the compartment.
- Please recycle the used batteries (inside the product).
- For cleaning, it is recommended to gently wipe the surface of the device with a wet towel when it is turned off.
- Never immerse in water or washing the product with water.
- If the product is not used for a period of time, you may need to recharge it to let it operates.
- If the supply cord is damaged, it must be replaced by the manufacturer, its service agent or similarly qualified persons in order to avoid a hazard.

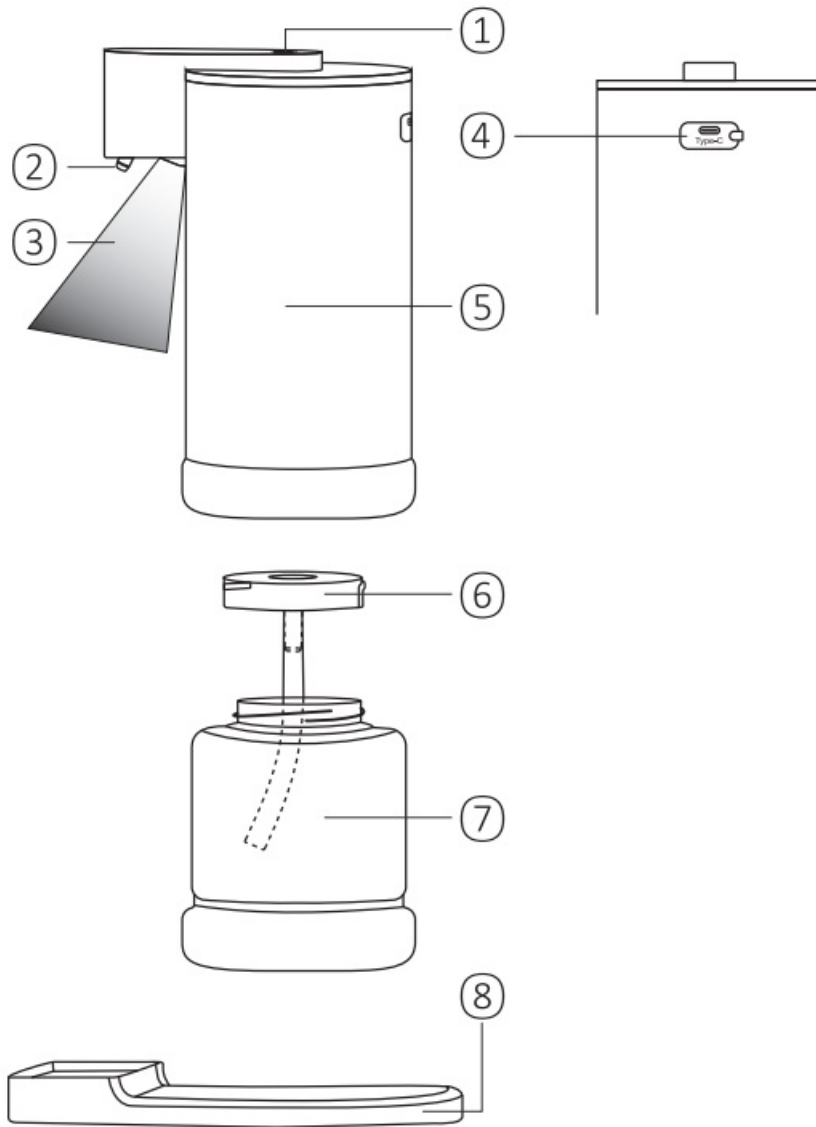
SAVE THESE INSTRUCTIONS

WHY VISH” SOAP DISPENSER?

- Sensitive infrared sensor, just 0.25s to dispense foam.
- Spectrum Indicator to show where the foam dispense.
- Automatic sensing foaming, keep touch less hygiene.
- Minimalist design, easy to refill soap liquid.
- User-friendly design, splash proof.
- Rechargeable battery, continuous use for long term.

KNOWING YOUR PRODUCT (FIG.1: Y180)

FIG.1: Y180



1. On/ Off Button/ Indicator Light
2. Body
3. Foam Dispensing Outlet
4. Spectrum Dispensing Area
5. Soap Refill Canister Cover
6. Soap Refill Canister
7. Type-C Recharging Port
8. Drip Free Plate

THE PRODUCT SPECIFICATION

Product :	YiSh ” Automatic Soap Dispenser
Model:	Y18O
Main Material :	ABS
Battery Type :	Lithium-ion
Battery Capacity:	1400mAh
Rated Voltage :	3.7V
Soap Tank Capacity:	9 oz (260ml)
Weight:	250g
Item Dimensions:	Soap dispenser: 74.S() x 161.5mm Drip Free Plate: 117.S(L) x 84.S(W) x 12.S(H)mm
Package Contents :	Soap dispenser, Drip Free Plate, charging cable, instruction manual



The battery is UL certificated and comes with self-protection function, it can provide charging and short-circuit protection.

INDICATOR LIGHT ILLUSTRATION

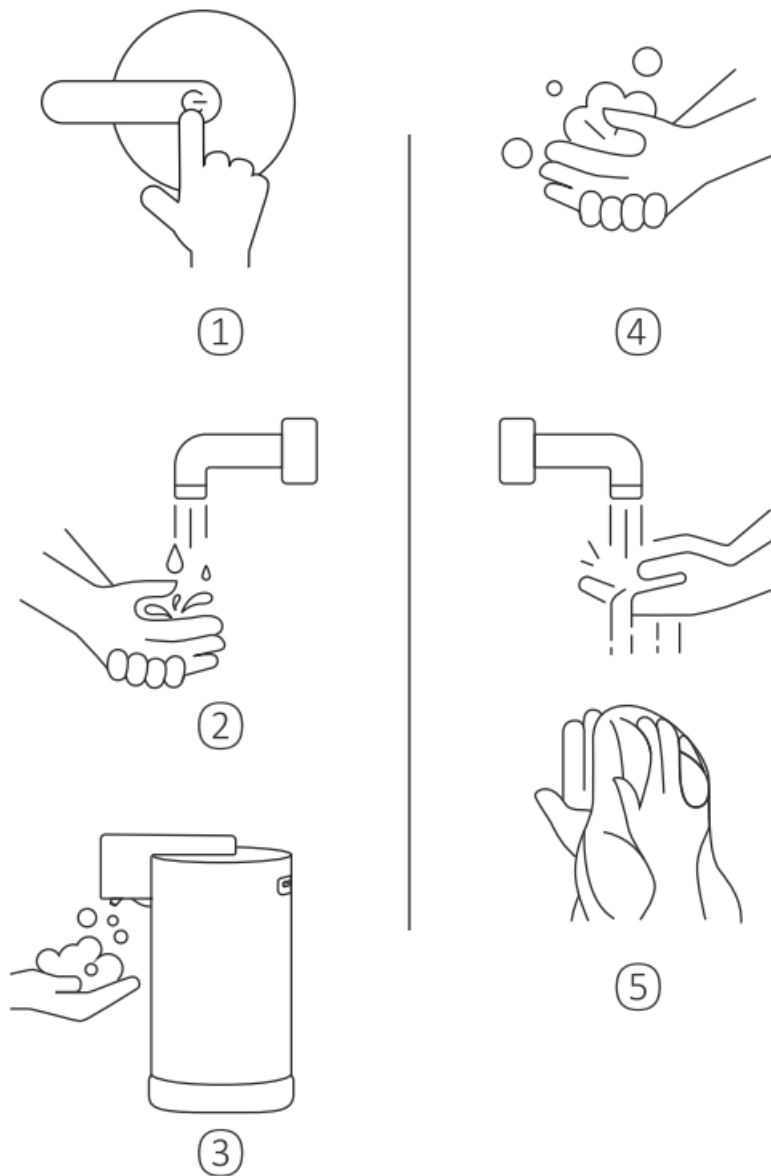
STATUS	INDICATOR LIGHT STATUS
ON	W HITE: lights on
STANDBY	W HITE: lights on
DISPENSING	BLUE: lights on
LOW BATTERY	BLUE AND WHITE: flashes alternately
CHARGING	BLUE: flashes on
FULLY CHARGED	WHITE: lights on
UNIT OFF	Indicator lights OFF
FOAM ING DISPENSER IS CLOG GING	BLUE: flashes continuously and rapidly

When the dispenser is on, tap the ON/OFF button again will turn it off.

TO USE THIS SOAP DISPENSER

Steps To Use (Fig.2: Y180)

FIG.2: Y180

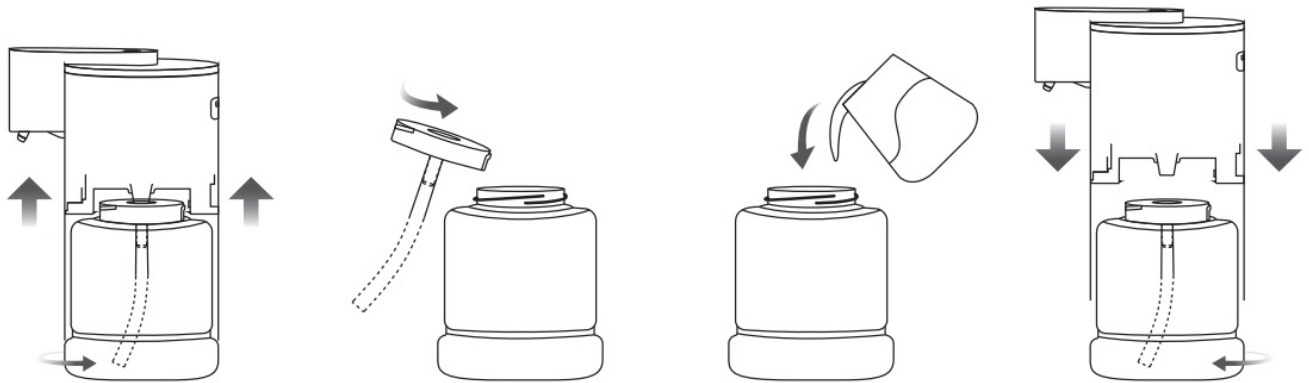


NOTE:

1. When the soap dispenser is not being used, it will go into standby mode.
If not used for 4 hours continuously, it will automatically turn off. Simply tap "On/Off" button again to reactive it.
2. Soap Dispensing Sensitivity:
 - To dispense: according to testing result, the sensor response time is around 0.25 seconds.

- Dispensing time: the foam default dispensing for 1.5 seconds. Nevertheless, to care your need of foam quantity, you can leave the hand within that 1.5 seconds to take your desired quantity of foam.

To Refill Soap Liquid



1. Unscrew to separate the dispenser body and bottom, you will see a soap refill canister.
2. Refill the soap liquid by unscrew the canister cover and then make sure you fully tighten after refilling the soap liquid.
3. Read the following “Smart Tips” carefully to help you selecting the appropriate type of soap liquid.

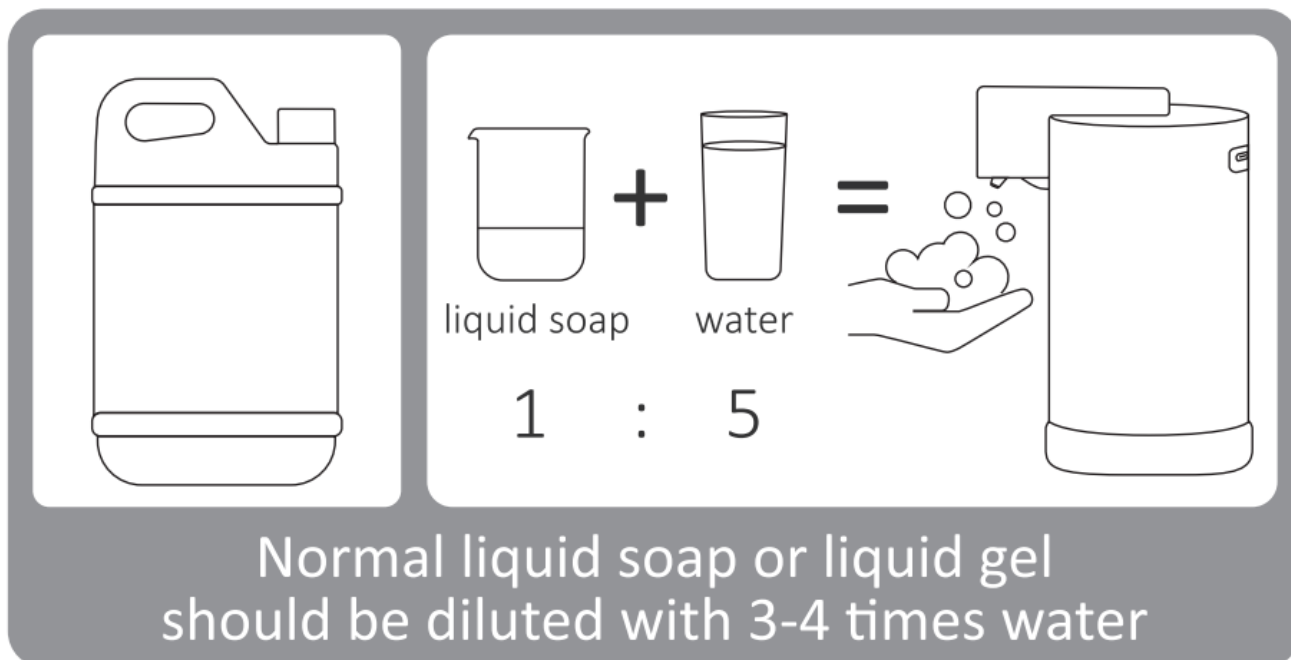


SMART TIPS:

- It is advised to refill by foam hand soap which is waterier for better foaming.



- To dilute a normal liquid soap or liquid gel soap, we recommend a 1:5 ratio of soap to water.




- It is no need to add liquid frequently, you can see the liquid level clearly.
- Using normal liquid soap or too concentrated liquid soap will lead to clog the outlet.
- In case of clogging, use damp cloth to clean the outlet.

PRODUCT CERTIFICATION MARK EXPLANATION

UKCA: Mandatory marking for entry into the UK market (Great Britain) (exceptions apply for products subject to special transition deadlines).

RoHS: It is used to standardize the material and process standards of electrical and electronic products to make them more conducive to human health and environmental protection.

FCC: Radio application products, communication products and digital products all require FCC certification to enter the US market.

 : Indoor use only sign, (Mainly considering factors such as rain, frost and short circuit of electrical appliances, which can only be limited to electrical appliances used indoors).



Electronic and electrical product waste sign. All electronic and electrical products using AC voltages below 1000V and 1500V DC voltages must be marked with this mark.



: Battery Act. This regulation aims to ensure that batteries placed on the EU market are sustainable and safety throughout their life cycle.

WEEE DISPOSAL INFORMATION

This product should not be disposed with other household wastes throughout the UK. To prevent possible harm to

the environment of human health from uncontrolled waste disposal, recycle it responsibly to promote the sustainable reuse of material resources. To your use device, please use the return and collection systems or contact the retailer where the product was purchased. They can take this product for environmental safe recycling.

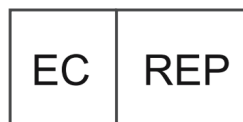
TROUBLESHOOTING

Failure	Possible Cause	Solution
Unable to switch on/off.	<ul style="list-style-type: none"> • There have water stains on the On/Off button cause it fail to sense your touch. 	<ul style="list-style-type: none"> • Wipe the water stains.
The indicator lights does not light on.	<ul style="list-style-type: none"> • The battery is completely empty. 	<ul style="list-style-type: none"> • Recharging for the device.
Soap liquid has leakage.	<ul style="list-style-type: none"> • Soap refill canister cover is not screw tight or over filled. 	<ul style="list-style-type: none"> • Screw the canister cover tightly.
The device cannot be dispensed (or difficult to dispense).	<ul style="list-style-type: none"> • Soap needs to refill; • Outlet clogging; • Soap is too concentrated (too thick); • The hose under the soap refill canister cover is loosen. 	<ul style="list-style-type: none"> • Refill foam hand soap; • Clean the outlet with damp cloth; • Dilute regular soap with more water; • Reinstall the hose.

CUSTOMERS SUPPORT




yish.service@outlook.com



APEX ES SPECIALISTS, S.L. Calle Puerto de la Morcuera, 13, PL. 1 OF.18-8 28919 Leganes Madrid
Info@apex-ce.com



Documents / Resources

 <p>Y180 Soap Dispenser Instruction Manual</p> <p>yish</p>	<p>YISH Y180 Touchless Automatic Foaming Soap Dispenser [pdf] Instruction Manual</p> <p>Y180 Touchless Automatic Foaming Soap Dispenser, Y180, Touchless Automatic Foaming Soap Dispenser, Automatic Foaming Soap Dispenser, Foaming Soap Dispenser, Soap Dispenser, Dispenser</p>
---	--

[Manuals+.](#)