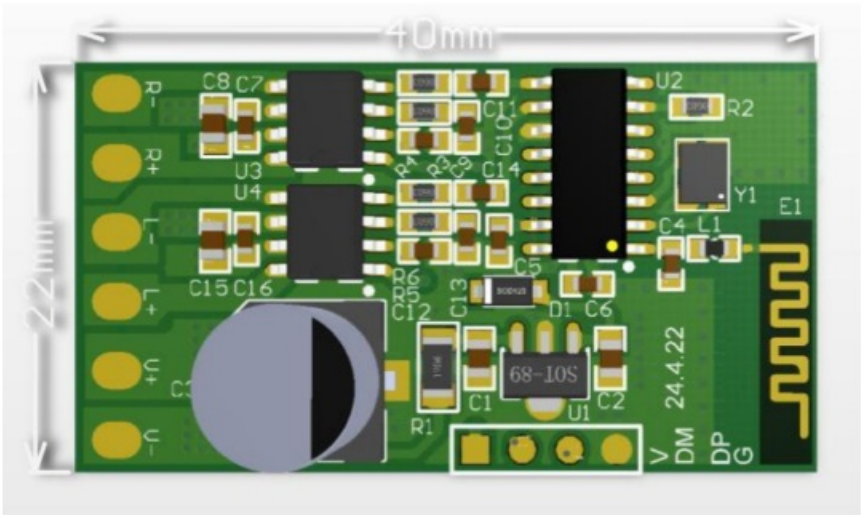




Yingzheng Bluetooth Stereo Audio Receiver Wireless Smallest Instructions

[Home](#) » [Yingzheng](#) » Yingzheng Bluetooth Stereo Audio Receiver Wireless Smallest Instructions 

Yingzheng Bluetooth Stereo Audio Receiver Wireless Smallest



Contents

- [1 Essential Parameter](#)
- [2 Feet Instructions](#)
- [3 Matters Need Attention](#)
- [4 Warning Statement](#)
- [5 Documents / Resources](#)
 - [5.1 References](#)
- [6 Related Posts](#)

Essential Parameter

Bluetooth version: 5.3

Bluetooth name: K1

Bluetooth distance: 10~15 meters

rated voltage DC12V

Rated current: above 3A

Rated power: 3W * 2 stereo sound

Frequency response: 120 HZ ~ 18 KHZ

Horn output interface: 4 Ω 3W horn

Feet Instructions

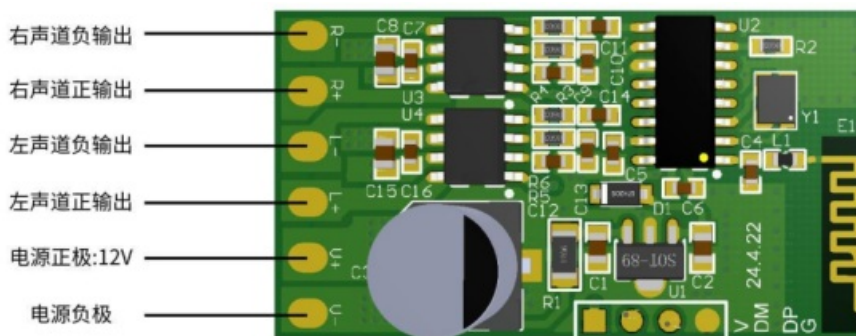
V+Power supply positive electrode: 12V

V-Power negative R + the right sound channel has a positive output

R-right sound channel negative output

The L + the left voice channel has a positive output

L-Left sound channel negative output



Matters Need Attention

1. Note the wiring according to the drawing, do not connect the wrong.
2. This document only represents the editing of the product parameters at the time and is subject to change without notice.
3. Signal interference: Bluetooth antenna is extremely vulnerable to high frequency or strong electromagnetic signal interference, as far away from the wireless and other devices. And the board can not be close to the metal objects, keep a certain distance.
4. Signal interference: Bluetooth antenna is extremely vulnerable to high frequency or strong electromagnetic signal interference, as far away from the wireless and other devices. And the board can not be close to the metal objects, keep a certain distance.

Bluetooth module K1, input line white positive electrode, gray negative electrode. After connecting the 12V power supply, the mobile phone Bluetooth is turned on. Search k1 and connect K1 can be used

Warning Statement

This device complies with part 15 of the FCC Rules. Operation is subject to the following two conditions: (1) This device may not cause harmful interference, and (2) this device must accept any interference received, including interference that may cause undesired operation.

Any Changes or modifications not expressly approved by the party responsible for compliance could void the user's authority to operate the equipment.


Note: This equipment has been tested and found to comply with the limits for a Class B digital device, pursuant to part 15 of the FCC Rules. These limits are designed to provide reasonable protection against harmful interference in a residential installation.

This equipment generates uses and can radiate radio frequency energy and, if not installed and used in accordance with the instructions, may cause harmful interference to radio communications. However, there is no guarantee that interference will not occur in a particular installation. If this equipment does cause harmful interference to radio or television reception, which can be determined by turning the equipment off and on, the user is encouraged to try to correct the interference by one or more of the following measures:

- Reorient or relocate the receiving antenna.
- Increase the separation between the equipment and receiver.
- Connect the equipment into an outlet on a circuit different from that to which the receiver is connected.
- Consult the dealer or an experienced radio/TV technician for help.

This equipment complies with FCC radiation exposure limits set forth for an uncontrolled environment.

Documents / Resources

	Yingzheng Bluetooth Stereo Audio Receiver Wireless Smallest [pdf] Instructions Bluetooth Stereo Audio Receiver Wireless Smallest, Stereo Audio Receiver Wireless Smallest, Audio Receiver Wireless Smallest, Receiver Wireless Smallest, Wireless Smallest
---	--

References

- [User Manual](#)

[Manuals+](#), [Privacy Policy](#)

This website is an independent publication and is neither affiliated with nor endorsed by any of the trademark owners. The "Bluetooth®" word mark and logos are registered trademarks owned by Bluetooth SIG, Inc. The "Wi-Fi®" word mark and logos are registered trademarks owned by the Wi-Fi Alliance. Any use of these marks on this website does not imply any affiliation with or endorsement.