



YI Technology Smart Dome Security Camera Instruction Manual

[Home](#) » [YI Technology](#) » YI Technology Smart Dome Security Camera Instruction Manual 



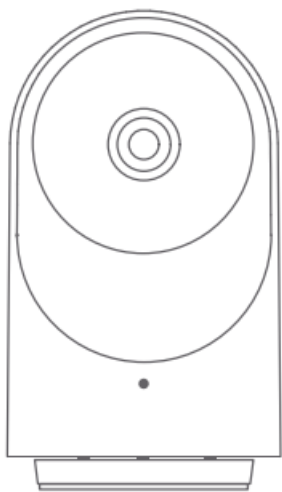
Technology Smart Dome Security Camera Instruction Manual

Thank you for chooseing Y1 Dome X

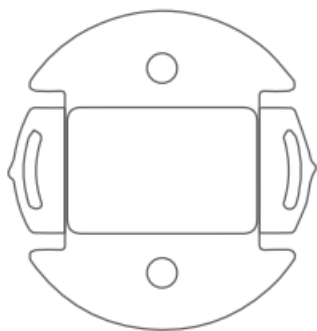
Contents

- [1 What in the box](#)
- [2 Getting to know the Camera parts](#)
- [3 General Introduction](#)
- [4 Wall mounting diagram \(optional\)](#)
- [5 PTZ Angle](#)
- [6 Documents / Resources](#)
 - [6.1 References](#)

What in the box



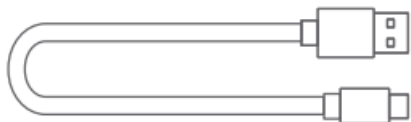
YI Dome X × 1



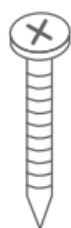
Camera Wall Holder × 1



Power Adapter × 1



USB Power Cable × 1

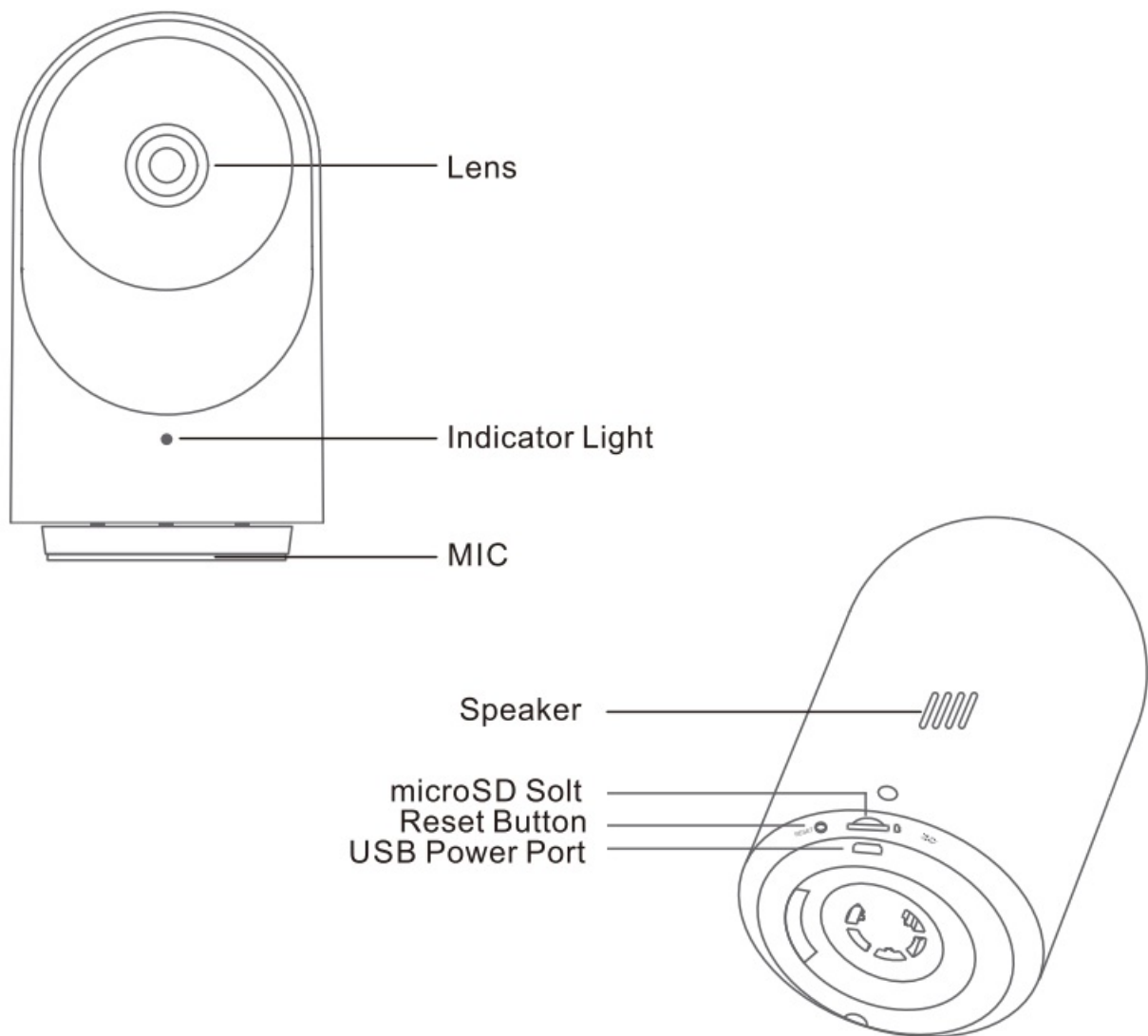


Screws × 2



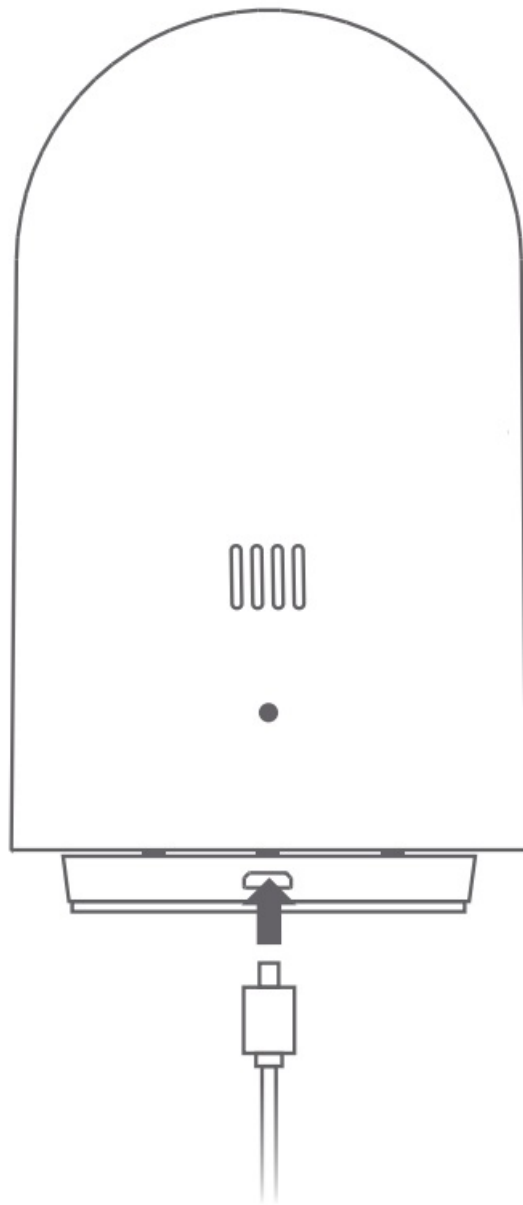
User Manual × 1

Getting to know the Camera parts



General Introduction

a) Power on the camera. Locate the USB cable on the bottom of the camera and plug in the data cable. The other end of the cable is powered by the power adapter. The front indicator light will turn on to indicate that the camera is powered. Also ensure that there is a WiFi network available.



b) Connect to the Y1 camera app. Download and install the app.

– Scan the QR code on the Y1 Home APP below and complete the installation. – You have a Y1 account, login directly and add the device according to the app's add process.



YI Home APP QR Code



<http://www.xiaoyi.com/home/app/down.html>

c) Adding the device to YI account

After logging in to the app, enter the device selection interface, the camera flashes yellow and the voice prompts "Waiting for connection"

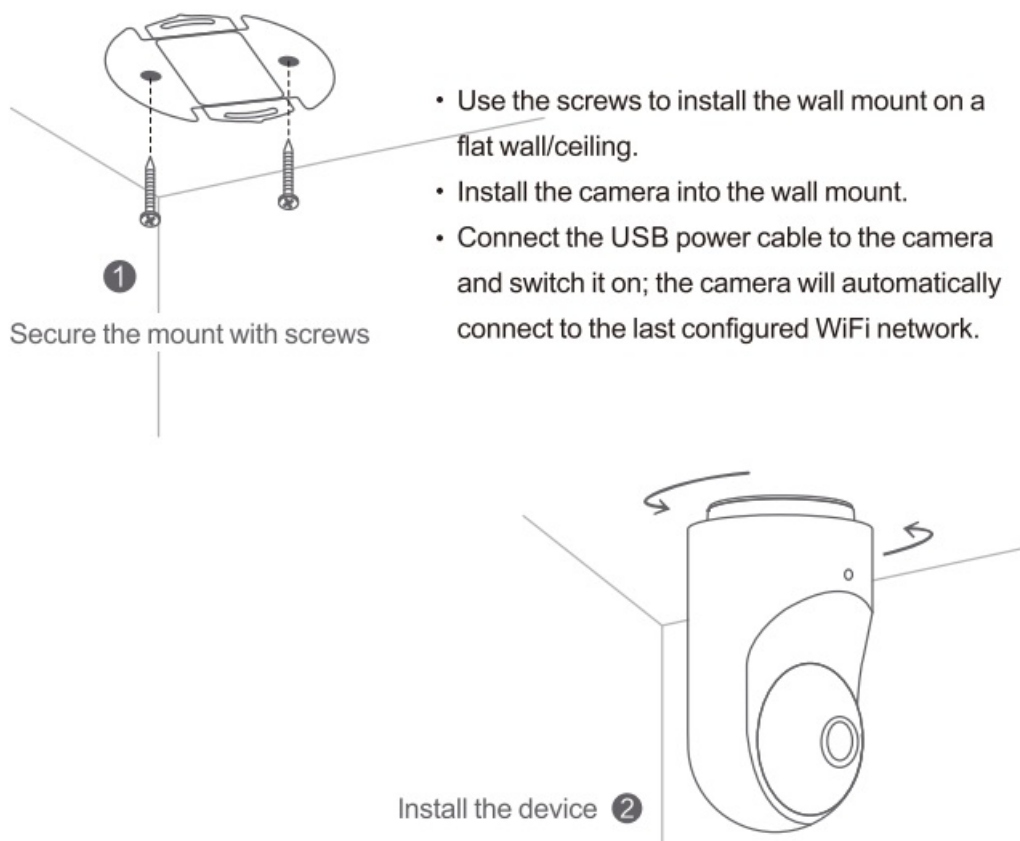
Then click on "heard waiting to connect" and point the QR code displayed on the phone towards the camera, waiting for the scan.

After the QR code is scanned successfully, click "Next" Waiting for the voice prompt. After pairing successfully, you can start using.



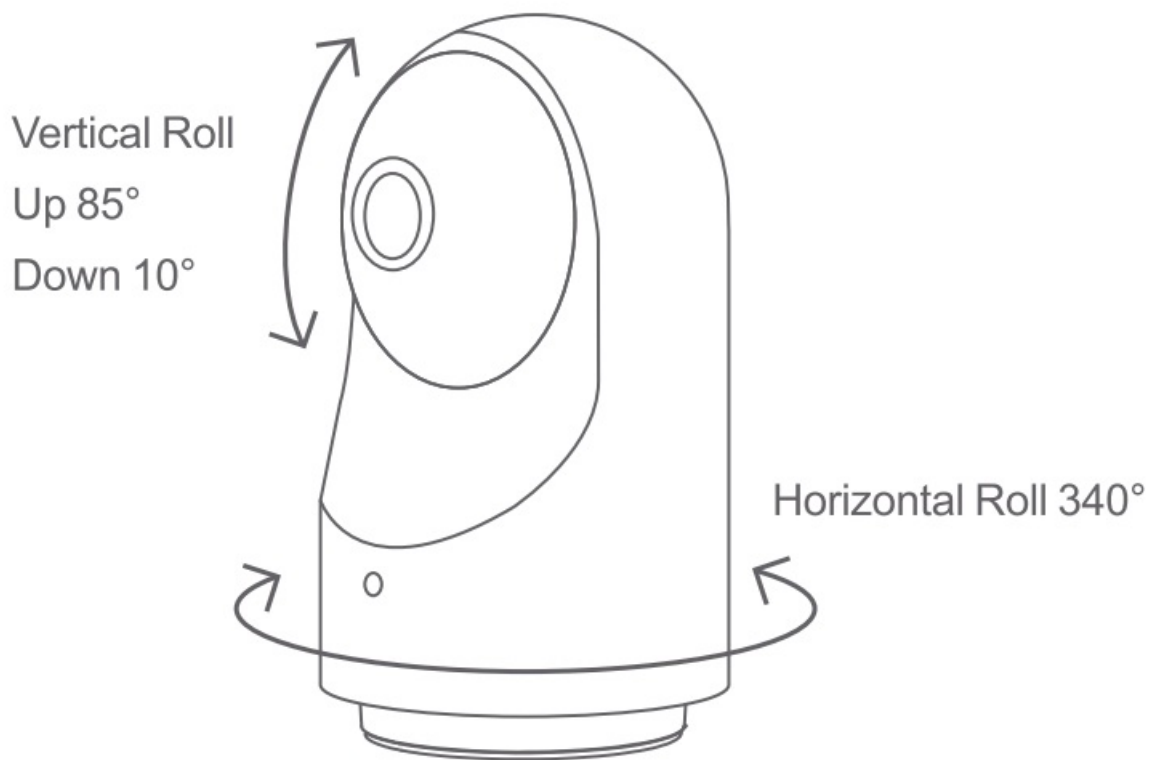
Wall mounting diagram (optional)

Tips: The mounting wall should support at least the weight of the bracket and the camera.



PTZ Angle

Activity angle: Horizontal 340°, vertical up 85°, vertical down 10°



This device complies with Part 15 of the FCC Rules / Industry Canada licence-exempt RSS standard(s). Operation is subject to the following two conditions: (1) this device may not cause harmful interference, and (2) this device must accept any interference received, including interference that may cause undesired operation. Changes or modifications not expressly approved by the party responsible for compliance could void the user's authority to operate the equipment.

This equipment has been tested and found to comply with the limits for a Class B digital device, pursuant to part 15 of the FCC Rules. These limits are designed to provide reasonable protection against harmful interference in a residential installation. This equipment generates uses and can radiate radio frequency energy and, if not installed and used in accordance with the instructions, may cause harmful interference to radio communications. However, there is no guarantee that interference will not occur in a particular installation. If this equipment does cause harmful interference to radio or television reception, which can be determined by turning the equipment off and on, the user is encouraged to try to correct the interference by one or more of the following measures:

- Reorient or relocate the receiving antenna.
- Increase the separation between the equipment and receiver.
- Connect the equipment into an outlet on a circuit different from that to which the receiver is connected.
- Consult the dealer or an experienced radio/TV technician for help.

Under Industry Canada regulations, this radio transmitter may only operate using an antenna of a type and maximum (or lesser) gain approved for the transmitter by Industry Canada. To reduce potential radio interference to other users, the antenna type and its gain should be so chosen that the equivalent isotropically radiated power (e.i.r.p.) is not more than that necessary for successful communication.

MPE Requirements

To satisfy FCC / IC RF exposure requirements, a separation distance of 20 cm or more should be maintained between the antenna of this device and persons during device operation. To ensure compliance, operations at closer than this distance is not recommended.



FCCID:2AFIB-YY3017

1C:20436-YS3017

Manufacturer: Shanghei Xiaoyi Technology Co. L.

Address: 16F, Buiding


1. No. 515, Huanke Road, Shanghal, China

Tel: +86-21-6881 6918,

FeC10: 2418 Yvsa017

1C:20436-YvS3017

Documents / Resources

	YI Technology Smart Dome Security Camera [pdf] Instruction Manual Smart Dome Security Camera, Dome Security Camera, Security Camera, Camera
---	--

References

- [User Manual](#)