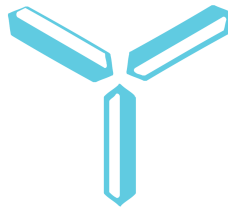




YesWord X-20 Customized Keypad User Guide

[Home](#) » [YesWord](#) » YesWord X-20 Customized Keypad User Guide



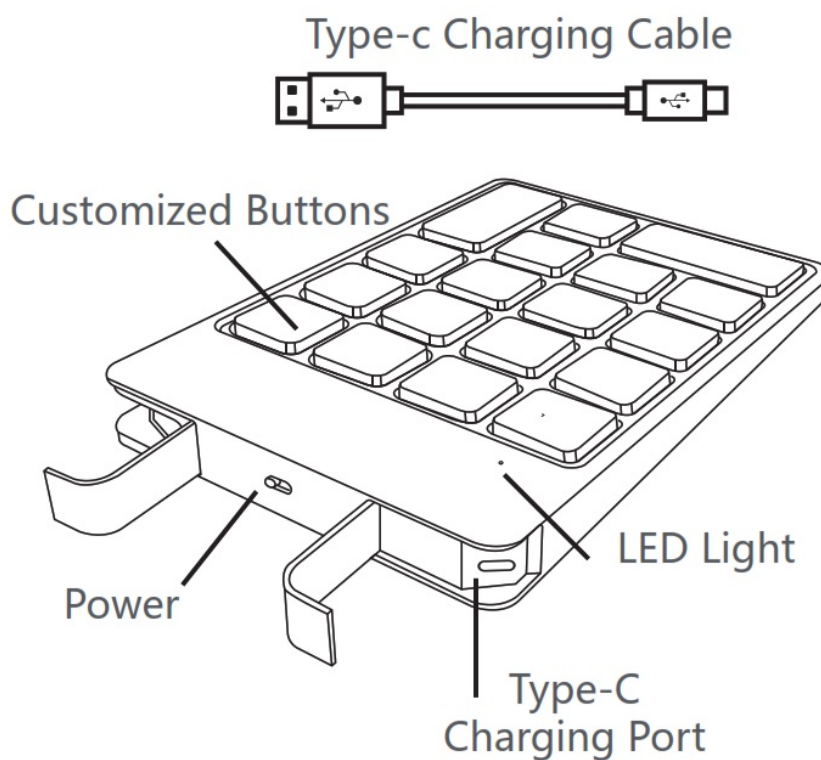
YesWord

X-20 Customized Keypad

Contents [[hide](#)]

- [1 Keypad: X-20 Keypad APP: YesWord](#)
- [2 Product Principle](#)
- [3 Bluetooth Pairing & Connection](#)
- [4 Keypad Customized](#)
- [5 Specifications](#)
- [6 Charging](#)
- [7 Documents / Resources](#)
 - [7.1 References](#)
- [8 Related Posts](#)

Keypad: X-20 Keypad



APP: YesWord

Android APP

1. Download "YesWord" from "www.yesword-tech.com"
2. Download "YesWord" in Google play

IOS APP

Download the "YesWord"APP in Apple App Store

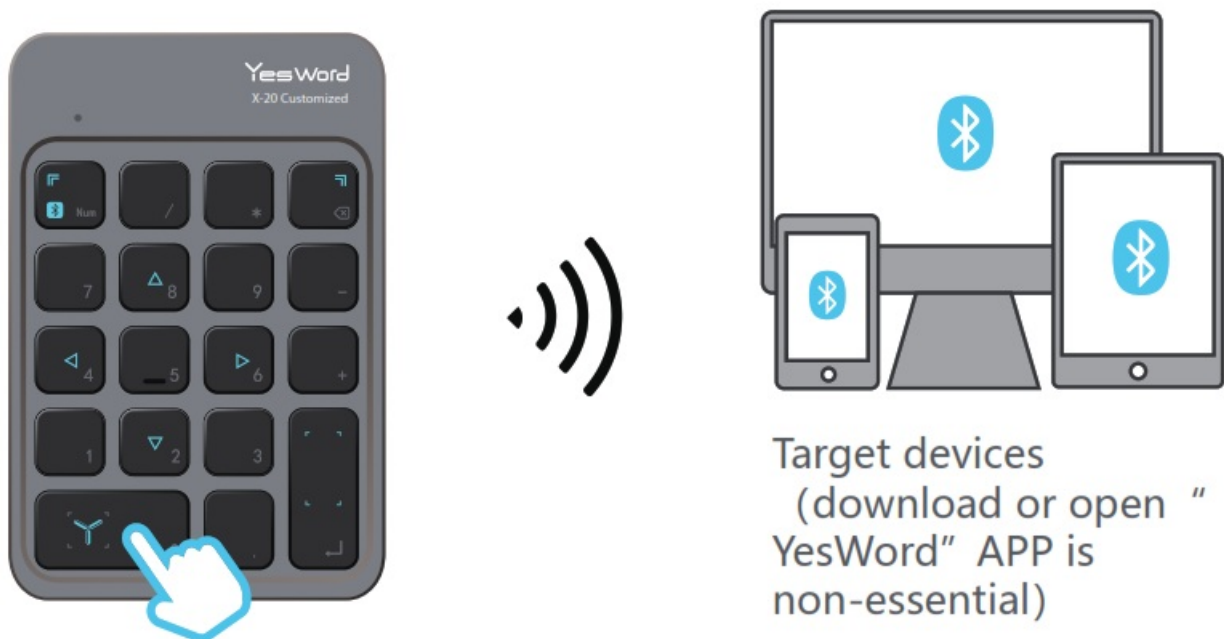
Please download the "YesWord" APP on your mobile phone or tablet before customizing the X-20 Keypad

Product Principle

1. Use the YesWord APP installed in your phone or tablet to customize the keypad.
After customization, the key values will be stored in the keypad.




2. Then the keypad can be used to connect with other devices via Bluetooth (downloading or opening the “YesWord” APP is non-essential)

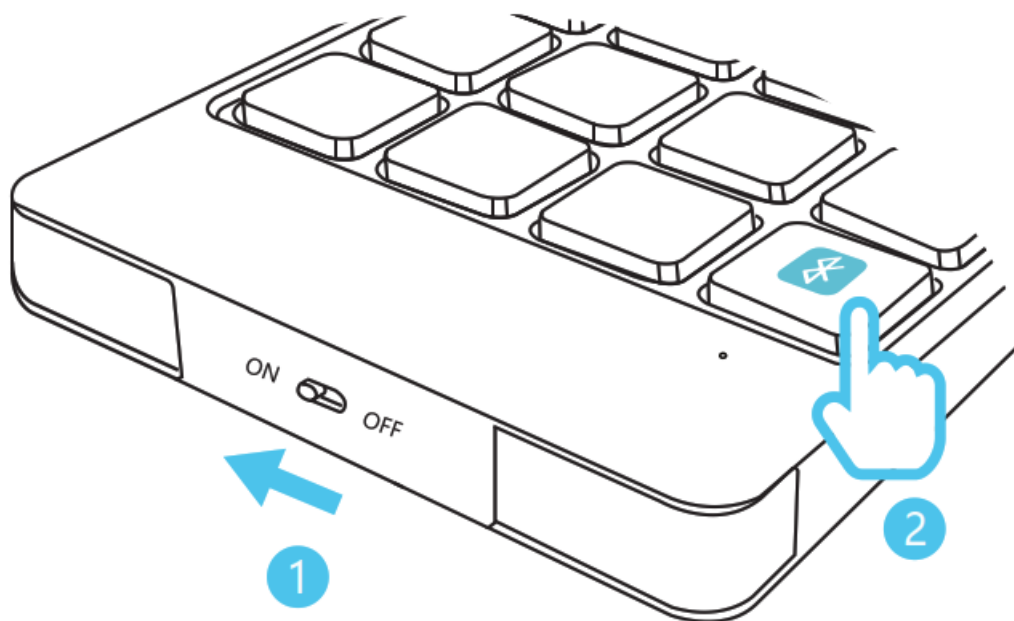


Support systems: macOS, IOS, Win10(up), Android

Bluetooth Pairing & Connection

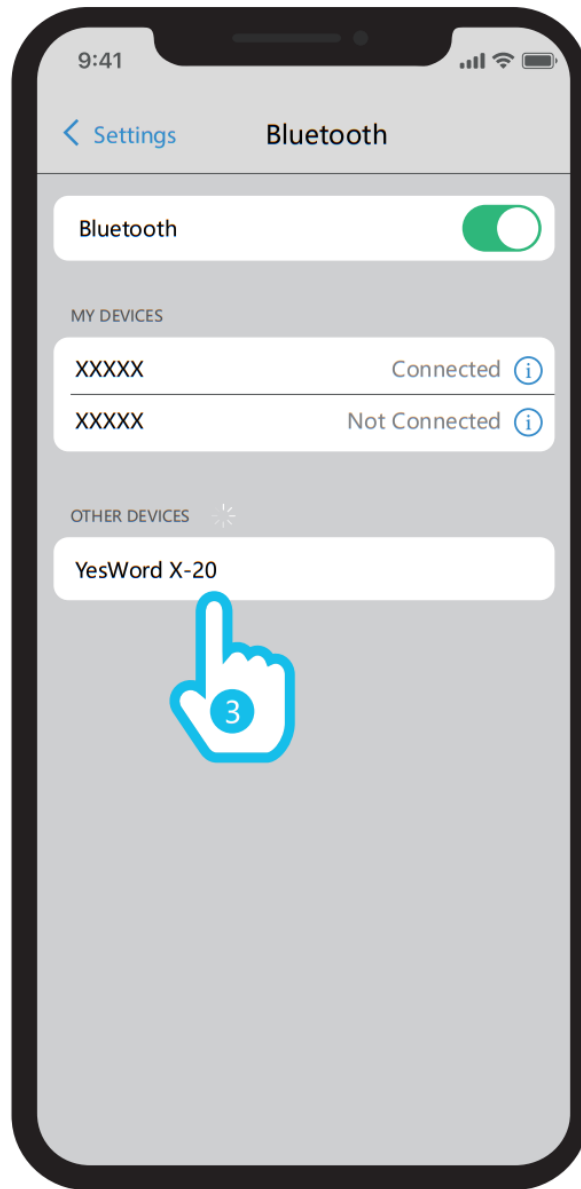
1. Turn the power button to “ON”

2. Long pressing the “ Num” button to activate the keypad Bluetooth



3. Turn on your device (phone, tablet or PC) Bluetooth.

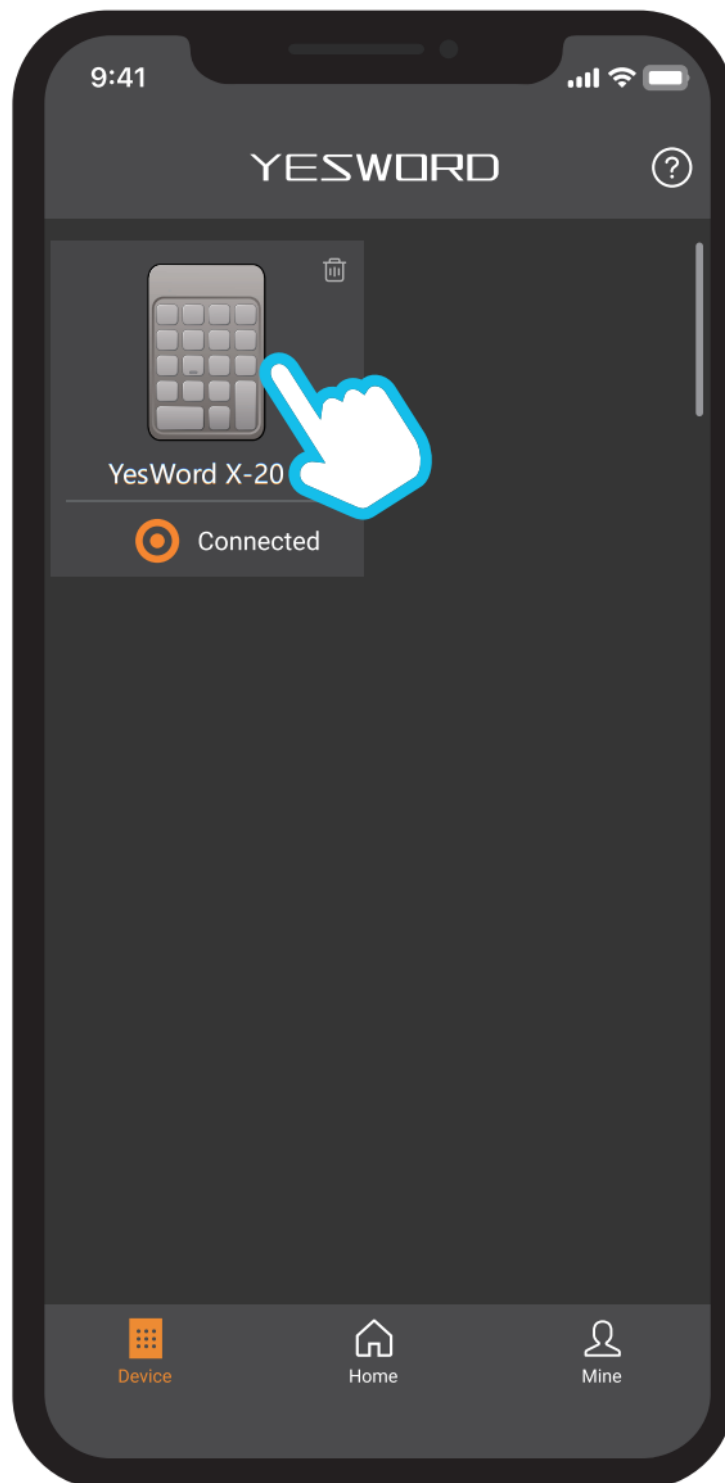
4. Find YesWord X-20 and tap it to connect the keypad to your device

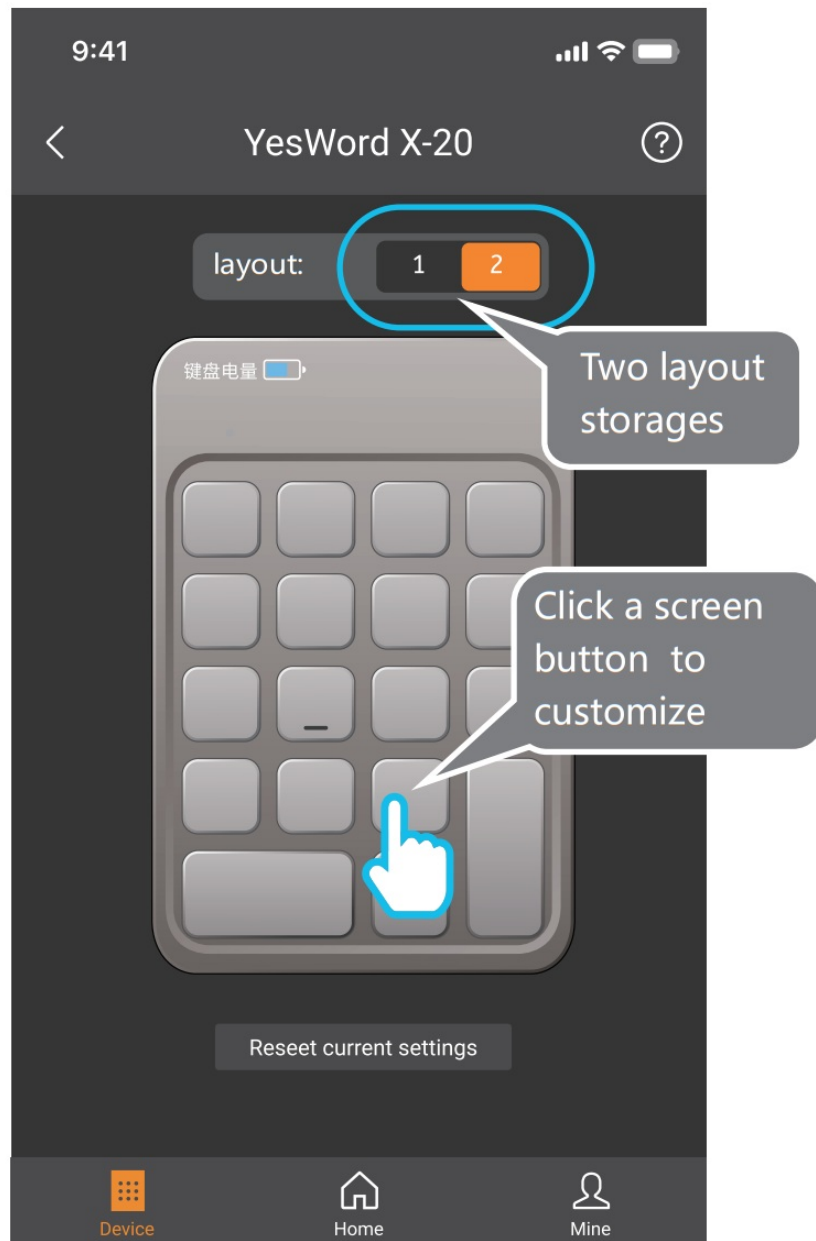
**Note**

Only phones or tablets installed our APP can customize the keypad, while you can connect the keypad to phone, tablet, and PC to use

Keypad Customized

1. After Bluetooth connection, you will see YesWord X-20 is connected to the YesWord APP on your phone or tablet
2. Tap the icon of YesWord X-20 and then you can customize the keypad with the APP
3. There are two output layouts in the layout selection and please pick the one you want to use
4. Click a button on the APP interface to active the customization





“Customized” Define the button with the actual key value
“Template” “Media”, “GoodNotes” and “Procreate” are preset

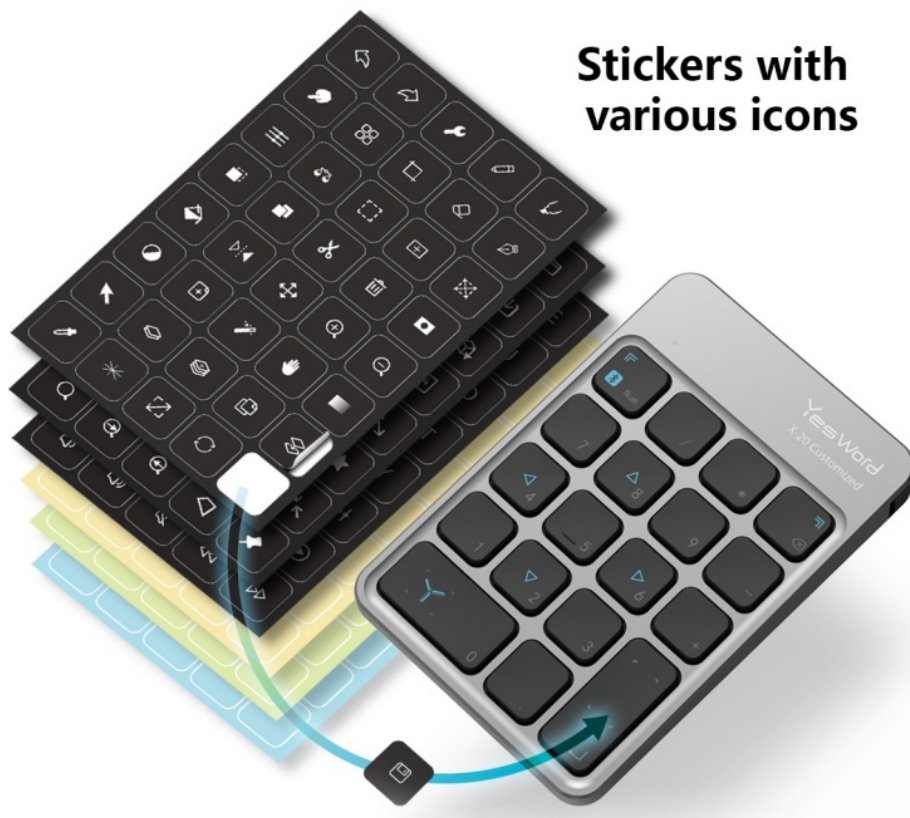


Save and Exit

- 1.The key value will be available only after saving
- 2.After saving, the page will automatically return to the previous page.
So,it is recommended to set all the buttons before saving.


Stickers

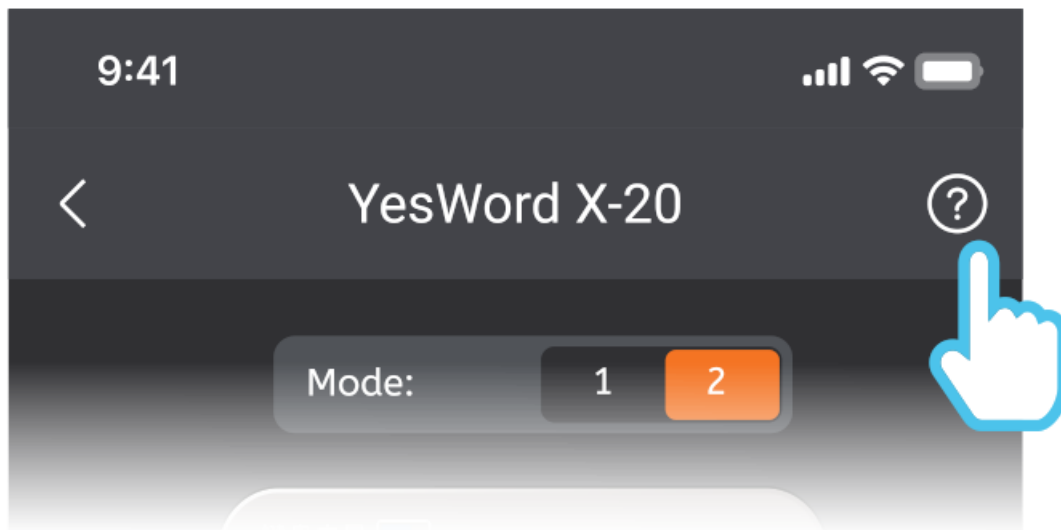
We have provided a variety of stickers



Stickers with various icons

More Tutorial

For more using tutorials, please click“  ”on the YesWord APP



Specifications

Bluetooth version	5.0	Support function
Lithium battery capacity	230mAh	Operational distance
Hibernation time	15 minutes	Dimension
Working temperature	-10°C~+55° C	Materials

Charging


When the keypad battery is low, the light flashes, please open the cover on the upper left of the keypad and charge it. It takes about 5 hours to fully charge. Charging

NOTE: This equipment has been tested and found to comply with the limits for a Class B digital device, pursuant to part 15 of the FCC Rules. These limits are designed to provide reasonable protection against harmful interference in a residential installation. This equipment generates uses and can radiate radio frequency energy and, if not installed and used in accordance with the instructions, may cause harmful interference to radio communications. However, there is no guarantee that interference will not occur in a particular installation. If this equipment does cause harmful interference to radio or television reception, which can be determined by turning the equipment off and on, the user is encouraged to try to correct the interference by one or more of the following measures:

- Reorient or relocate the receiving antenna.
- Increase the separation between the equipment and receiver.
- Connect the equipment into an outlet on a circuit different from that to which the receiver is connected.
- Consult the dealer or an experienced radio/TV technician for help

Changes or modifications not expressly approved by the party responsible for compliance could void the user's authority to operate the equipment

Documents / Resources

	<p>YesWord X-20 Customized Keypad [pdf] User Guide</p> <p>X-20, X20, 2A68KX-20, 2A68KX20, Customized Keypad, X-20 Customized Keypad</p>
---	---

References

-  [YesWord – Try to say yes to yourself—YesWord](#)