



YESKAMO Wireless Repeater IPC Router Installation Guide

[Home](#) » [YESKAMO](#) » YESKAMO Wireless Repeater IPC Router Installation Guide 



Quick Instructions Guide

Wireless Repeater

IPC Router

Contents

- [1 Wireless Repeater IPC Router](#)
- [2 Features](#)
- [3 Packing List](#)
- [4 Product Overview](#)
- [5 Wireless Repeater Function Settings](#)
- [6 IPC router function and operation](#)
- [7 FAQ](#)
- [8 Documents / Resources](#)
- [9 Related Posts](#)

Wireless Repeater IPC Router



Support wireless repeater function



Make wired NVR system same effect as wireless NVR, support wireless ip camera connection



Support 2.4G wifi IP Camera



Quick matching code



Quick wireless matching code



Indicate the signal status of each IP Camera

Features

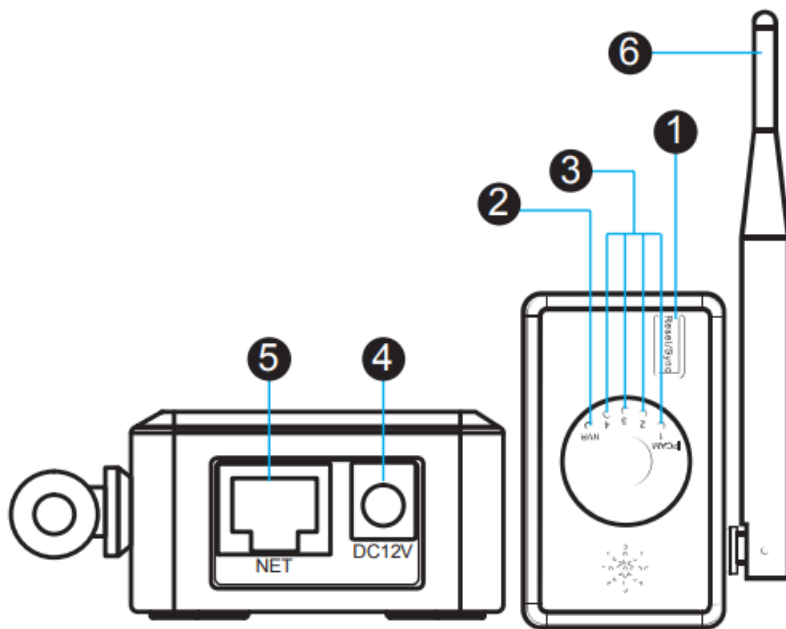
Wireless repeater is a security-dedicated router independently developed for the application of security field (former name IPC router), mainly has two functions of wireless repeater and IPC router.

1. Cascades the wireless camera and the wireless NVR through the wireless signal, extending the coverage of the wireless kit.
2. Turns the wireless IP camera into a wired and connects to the wired NVR to provide a flexible wireless solution.

Packing List

Item	quantity
R4S-3	1
User Manual	1
screw pack	1

Product Overview



1. **Match code / reset button:** Trigger the code matching mode
 - (1). Press and hold “reset/sync” for 3 seconds and then release ($3s < T < 10s$), IPC router enters the match code to the IP CAM mode, all IPCAM status lights flash at the same time.
 - (2). Press and hold “reset/sync” for 10 seconds and then release ($T > 10$ seconds), the IPC router enters the wireless match code to the NVR mode, and the NVR status light flashes quickly.
2. **NVR status light:** Indicates the wireless connection status between the IPC router and the wireless NVR.
 - Fast flash: The IPC router is in the status of matching code to the wireless NVR.
 - Steady on: The IPC router is paired and the wireless connection is normal.
 - Slow flash: The IPC router is paired and the wireless connection is lost.
 - Light off: The IPC router is abnormal and needs to be checked.
3. **IPCAM status light:** Indicates the wireless connection status between the IPC router and the wireless camera.
 - Steady on: Indicates that the camera is connected to the IPC router. Several lights on indicates that several cameras are connected, there are 4pcs IPCAM status lights in total.
 - Fast flash: Indicates that the IPC router is in the state of matching code to the camera. Press and hold “reset/sync” for 10 seconds to release. The IPC router enters into the matching code to camera mode, and all IPCAM states flash at the same time.
4. **Power:** Power supply
5. **Network port:** Connect to NVR/switch
6. **Antenna:** To receive wifi signal

Wireless Repeater Function Settings

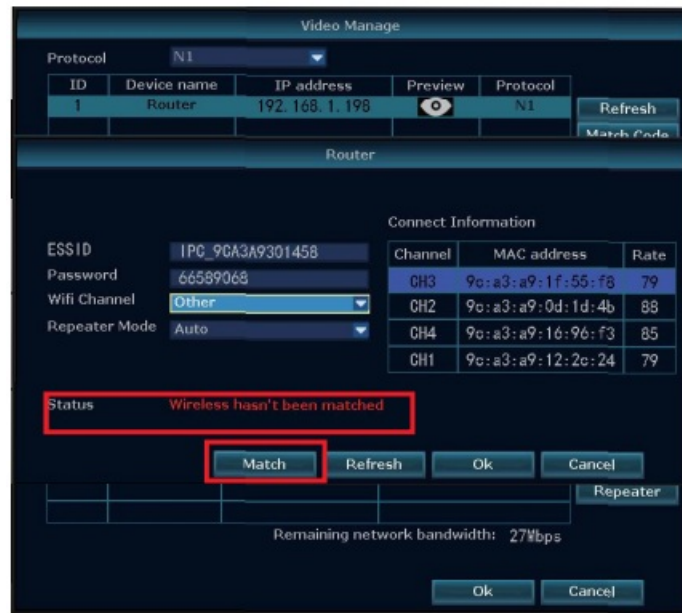
When an IPC router is used as a wireless repeater on a wireless NVR, there are two ways to add.

1. Wireless match code

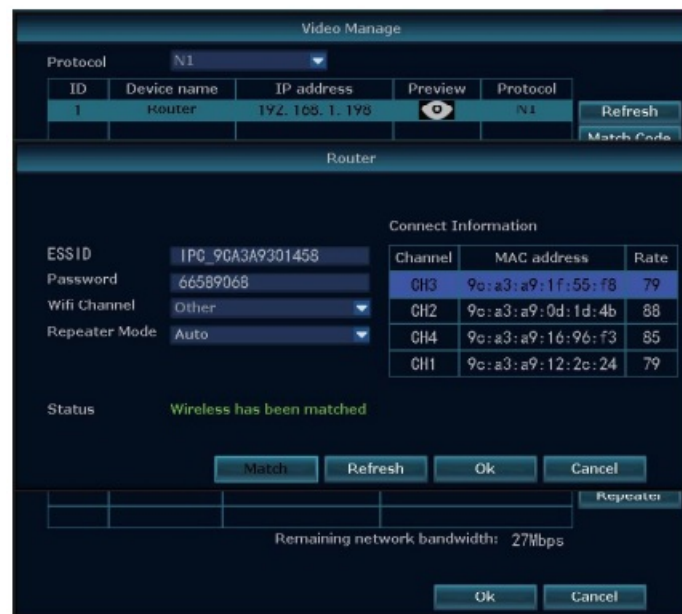
Press and hold the “Reset/Sync” button for 10 seconds and then release to enter into the wireless match code to NVR Mode. At this time, the NVR status light flashes quickly, the wireless repeater is placed within 1 meter beside the NVR with power on (no need to connect the network cable). The IPC router will automatically match code to the NVR. When the NVR status light is on, it indicates that the connection is successful.

2. Network cable pairing

Connect the IPC router and the NVR with a network cable. Search for the IPC router on the video management interface, and double-click “router” in the list, click the “match code” button to pair the IPC router to the wireless NVR, as shown below.



▲ Fig4.1 Not connection with IPC router yet



▲ Fig4.2 Connected with IPC router

3. Wireless repeater settings

- Description of repeater setting interface

Repeater supports both auto repeater and manual repeater. Right click mouse → Video management → Repeater settings, Enter the repeater settings interface. On this page, you can view the repeater and repeater topology diagrams, and set the repeater. In the interface, NVR indicates this wireless NVR, CHx-Auto indicates cameras that support auto repeater, CHx indicates cameras that support manual repeater only, x indicates camera channel number; RPx-Auto indicates repeater that supports wireless repeater, router indicates a repeater that only supports manual relay, and x indicates the serial number of the repeater. There is an “Auto repeater” switch in the upper right corner of the repeater setting interface. It is off by default and can be turned on by the user according to actual needs.

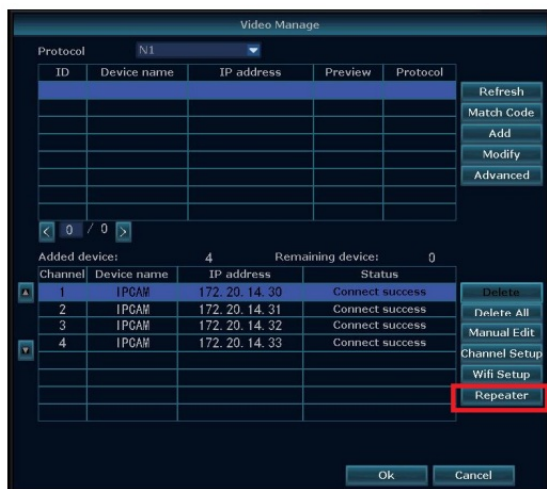


Fig4.3



Fig4.4

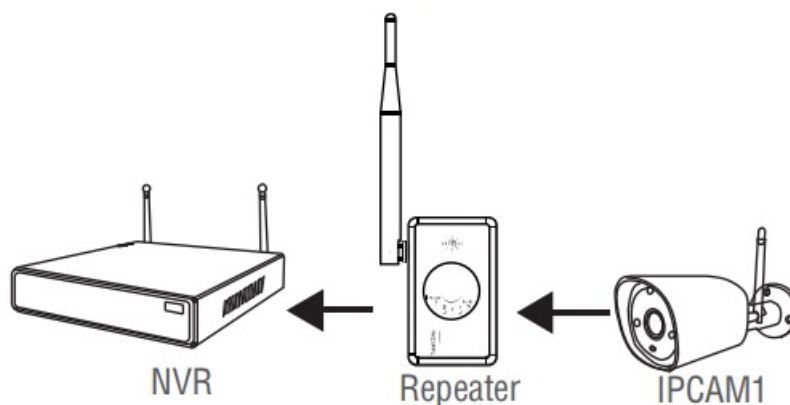
• Auto repeater use

When the repeater and camera on the repeater setting interface display “RPx -Auto” and “CHx-Auto”, the repeater and camera support wireless repeater. The wireless repeater does not need to be set. If the camera CH1 is too far away to connect to the NVR, you only need to place a wireless repeater at a reasonable position between the camera and the recorder, as shown in the figure below:

Note: To use a wireless repeater, the repeater must first be paired to the wireless NVR. Press and hold the wireless repeater for 10 seconds. When the NVR status light flashes quickly, it will automatically pair with the NVR without any sense when approaching the wireless NVR. After successful pairing, the NVR status light is always on.



Fig4.5



• Manual repeater settings

After the IPC router is paired to the wireless NVR (the network cable needs to be unplugged), you can search for the IPC router on the video management interface (see Figure 4.2). Place the wireless camera that needs to be connected to the IPC router near the NVR, enter the repeater settings interface (right click-> video management->cascading settings), click the “+” button on the back of the router on the interface, and add the corresponding wireless camera on the channel to the IPC router and click the “Apply” button to complete the setup, as shown below.

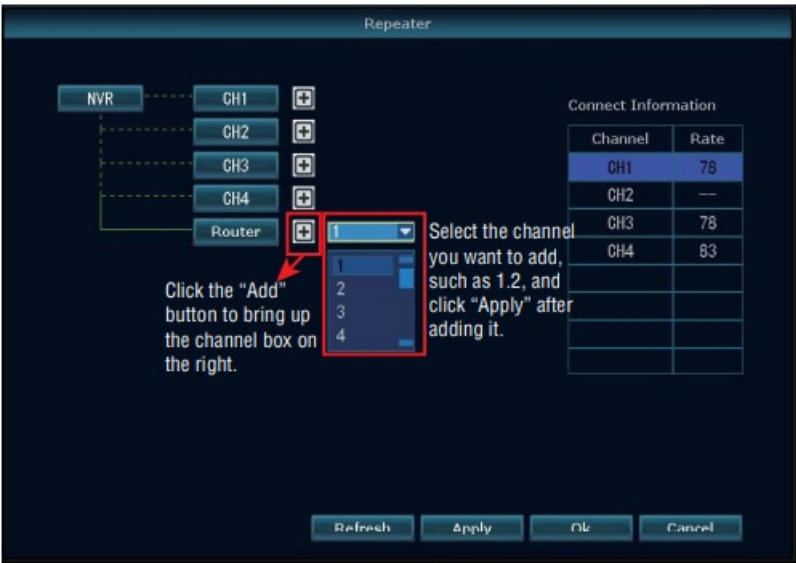


Fig 4.6

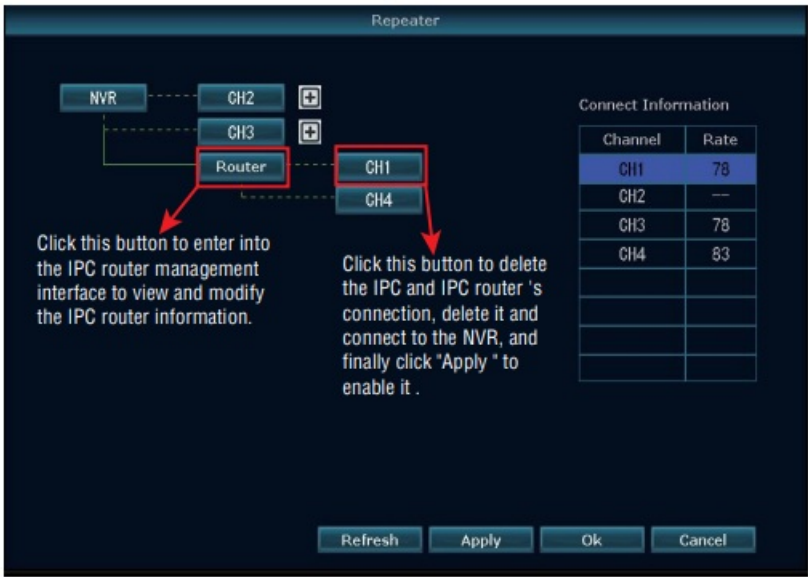
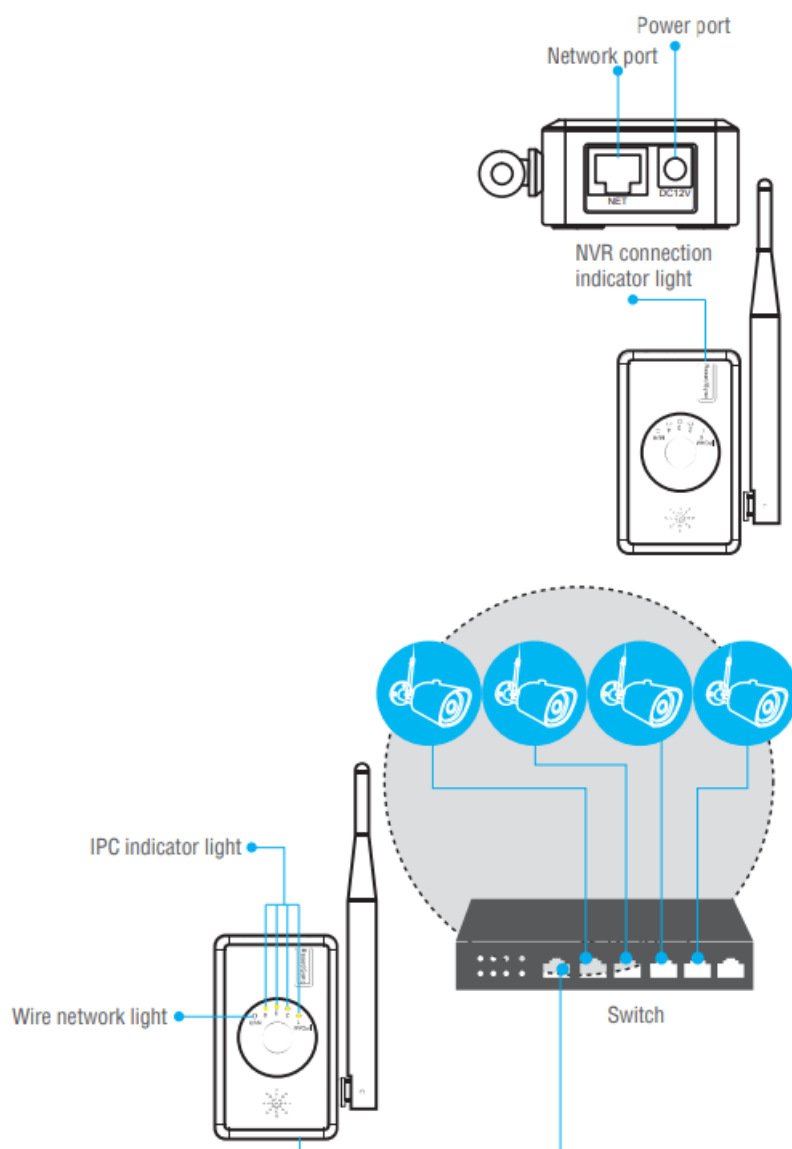


Fig 4.7

IPC router function and operation



1. Wired Matching Code

- (1) Wireless camera with network port: Connect the IPC router and wireless camera with the network cable and power on.
- (2) Pure wireless camera: power on the camera and in the wireless match code mode, place it next to the IPC router.
- (3) Press and hold the “Reset/Sync” button on the IPC router for 3 seconds, then release to startup match code mode. At this time, all IPCAM status indicators will flash at the same time. When all the indicators stop flashing, match code is completed.

If match code is successful, the IPCAM light will be on. When you need to add multiple wireless cameras at once, you can connect them with a switch. (As shown below)

Note: Two IPC routers cannot be connected to the same switch to match code, and the second camera will catch the first paired camera 's connection.

2. NVR Connect NVR Through N1

After matching code successfully, use a network cable to connect the router and NVR. Right click the mouse video management refresh, search wireless IPC and IP address of router (router IP defaults to 192.168.1.198), click one key to add or “add ”to add wireless IPC on NVR, If show of different segments, please use on key to add. (as shown in Figure 1)

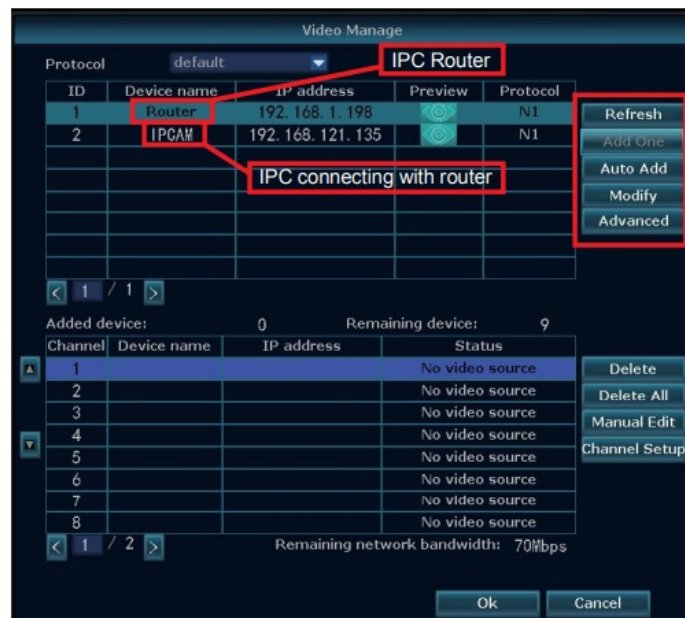


Fig 5.1

In the searching result of video management on GUI, double click “router” (as picture 1 shown), and enter into the management interface of IPC router. Can check the information of IPC router and change WIFI channel of IPC router.

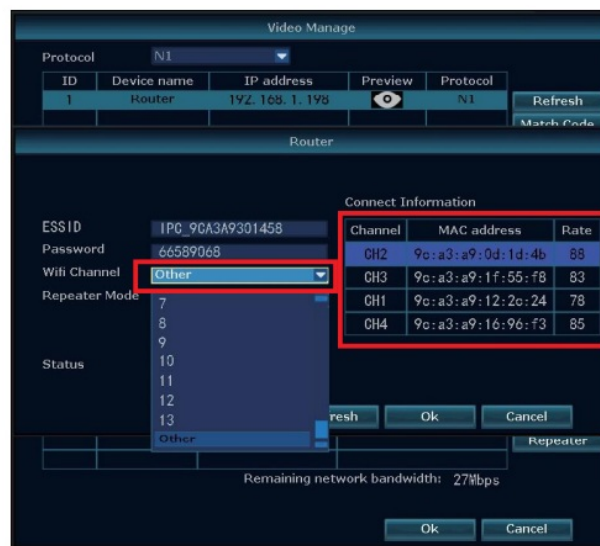
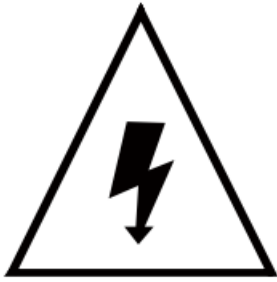


Fig 5.2

FAQ

Q: When install several IPC routers at the same place, and wireless cameras are very close to IPC router, only about 10 meters, but the image is very slow, and cameras are offline and can't connect again very often. What happen?

– **A:** This is due to the co-interference of several IPC routers based on the same WIFI channel. There are 4 WIFI channels which are not interferential: 1, 6, 11 and other. If there are 4 IPC routers at the same place, then WIFI channel of different IPC router can be setup as 1, 6, 11 and other. The principal of WIFI channel setup is that IPC routers with same WIFI channel should be separate as far as possible, not overlap. Don't recommend to use IPC router at population centers.



Warning

Nonprofessionals do not operate it because of the danger of electrical shock.

Warning

Please do not use power supply higher than DC 12V because of the danger of fire and electrical shock.

FCC Warning

This device complies with part 15 of the FCC Rules. Operation is subject to the following two conditions: (1) This device may not cause harmful interference, and (2) this device must accept any interference received, including interference that may cause undesired operation.

NOTE 1: This equipment has been tested and found to comply with the limits for a Class B digital device, pursuant to part 15 of the FCC Rules. These limits are designed to provide reasonable protection against harmful interference in a residential installation. This equipment generates, uses and can radiate radio frequency energy and, if not installed and used in accordance with the instructions, may cause harmful interference to radio communications. However, there is no guarantee that interference will not occur in a particular installation. If this equipment does cause harmful interference to radio or television reception, which can be determined by turning the equipment off Andon, the user is encouraged to try to correct the interference by one or more of the following measures:

- Reorient or relocate the receiving antenna.
- Increase the separation between the equipment and receiver.
- Connect the equipment into an outlet on a circuit different from that to which the receiver is connected.
- Consult the dealer or an experienced radio/TV technician for help.

NOTE 2: Any changes or modifications not expressly approved by the party responsible for compliance could void the user's authority to operate the equipment.



Documents / Resources



[YESKAMO Wireless Repeater IPC Router](#) [pdf] Installation Guide
R4S3, 2APRB-R4S3, 2APRBR4S3, Wireless Repeater IPC Router, Wireless Repeater Router, Repeater Router, Wireless Router, IPC Router, Router